

Wet Location
Vaportight: WL-SEG-1540-LED

Wet Location 15" x 4' Linear Vaportight LED Luminaire for Surface or Pendant Mounting

- **High Lumen Packages, up to 44,000Lm Delivered**
- **Ambient operating temps as Low as -40C(-40F) and as High as +45C(+113F) (Temps Vary by Configuration. Verify in Energy Data Section)**
- **IP65 / IP66 / IP67**
- **1500 PSI hosedown**
- **UL 1598 Wet Location**
- **Marine grade 316 stainless steel latches & Mounting brackets**
- **Nema4X**
- **UL 5VA Rated (will not melt or burn)**
- **Polycarbonate Lens: Clear / Frosted**
- **B.A.A. & B.A.B.A Compliant & Made in the USA by a Family Owned US Corporation**



DISCLAIMER: Although KURTZON has prepared the information contained in this document with all due care, KURTZON does not warrant or represent that the information is free from errors or omission. Whilst the information is considered to be true and correct at the date of publication, changes in circumstances after the time of publication may impact on the accuracy of the information. The information may change without notice and KURTZON is not in any way liable for the accuracy of any information printed and stored or in any way interpreted or used.

ORDERING GUIDE

Series	Lumen Package	CCT/CRI	Optics	Voltage	Controls	Mounting	Sensors	Options
WL-SEG-1540								
Series	Lumen Package	CCT/CRI	Optics	Voltage	Controls	Mounting (Not Required)	Sensors (Not Required)	Options (Not Required)
WL-SEG-1540	2LO 2 Rows of Low Flux LED's	83 CRI:	CP Clear Polycarbonate	UNV (120-277 Vac)	DIM1 0-10V 1%	V-Hook Mounting Hooks	OCC MW Microwave OCC Sensor (Internal 32" MAX)	PxW * Programmed to Specified Wattage (Replace X with Watts)
	3LO 3 Rows of Low Flux LED's	830 3000K	FP Frost Polycarbonate	HV (347-480 Vac)	DIM5 0-10V 5%	FMB Flex Mtg Brackets	OCC HB Highbay OCC Sensor (End Mount 20"-40")	PxL * Programmed to User Specified Lumens (Replace X with Lumens)
	4LO 4 Rows of Low Flux LED's	835 3500K	CA Clear Acrylic		DALI DALI 1%	SCM Single Conduit Stem	OCC LB Lowbay OCC Sensor (End Mount 8"-25")	10KV 10KV Parallel Surge Protection (One Supplied Per Circuit)
	6LO 6 Rows of Low Flux LED's	840 4000K	FA Frost Acrylic		2/ED 2 Circuits	DCM Dual Conduit Stem	DL/OCC HB Daylight & Highbay OCC Sensor (End Mount 40" MAX)	3WC 3 Wire Cord (Must Provide Specs)
	2HI 2 Rows of High Flux LED's	850 5000K			LUTRON (Specify Type)		DL/OCC LB Daylight & Lowbay OCC Sensor (End Mount 8" MAX)	WHIP Installed Flex Whip (Must Provide Specs)
	3HI 3 Rows of High Flux LED's				D2OFF 0-10V 1% Dim To Off		OTHERS Must Specify	EM10 ** 10W Integral Emergency Driver (Specify Voltage & Switching)
	4HI 4 Rows of High Flux LED's				OTHER (Must Specify)			FF Fuse & Fuse Holder (One per Specified Circuit)
		90+ CRI:						
		935 3500K						
		940 4000K						
		950 5000K						
**EM10 not available when both 4HI options are selected.								

Ordering Notes, If Applicable

Wet Location Vaportight: WL-SEG-1540-LED

Wet Location 15" x 4' Linear Vaportight LED Luminaire for Surface or Pendant Mounting

SPECIFICATIONS

HOUSING: Injection molded, .125" thick Hole Free White Fiberglass body with sloped top Surface to prevent water accumulation. 5VA Flame Rating

OPTICS: Injection molded Heavy gauge Clear or Frosted Acrylic or Polycarbonate. Secured by Captive Stainless Steel cables.

REFLECTOR: Standard (92%) High Reflectance white 22 gauge metal. Formed wiring cover for rigidity. Removable without tools or screws.

GASKETS: One piece urethane extruded foam with smooth surface.

LATCHES: Twelve (12) 316 Stainless Steel over-center latches secure lens to housing.

MOUNTING: Provided with (4) mounting brackets for suspending (cables by others). See mounting options for other configurations.

LEDs: Commercially available in a wide variety of Color Temperature (CCT), FLUX, and CRI. Highly efficient and consistent color maintained to 3 SDMC for color critical applications. B50/L70 and compliant with Zhaga recognized hole patterns. Consult factory for LED options or configurations not listed below.

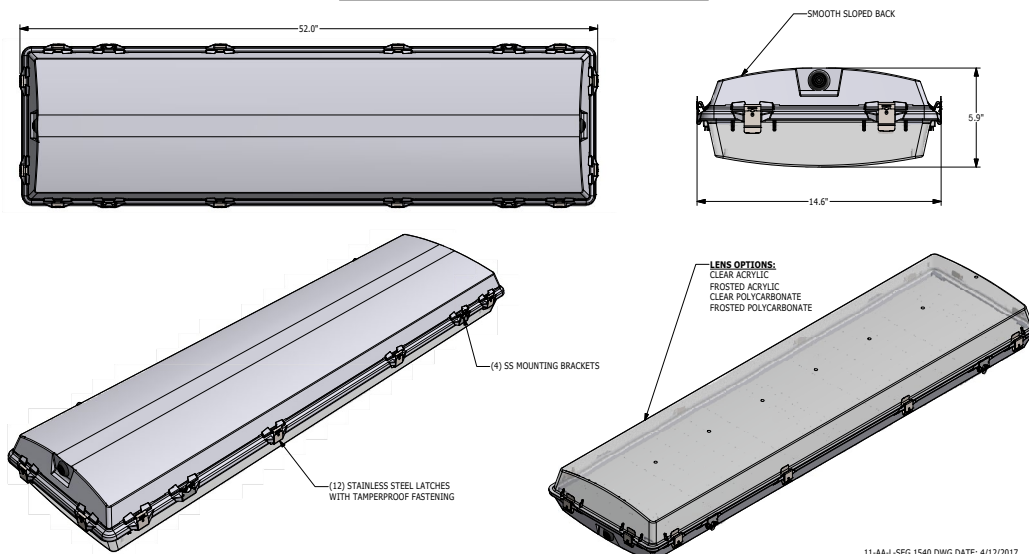
DRIVERS: Standard Universal Voltage Class 2 drivers are 0-10v Dimmable to 1% for most LED configurations. They come with at least 2.5Kv surge protection, have less than 10% THD at max load, Ballast Factor Greater than .95 and are programmable to match specific lumen or wattage requirements. Drivers with higher input voltage ratings are available, consult factory for driver specifications.

INSTALLATION: Suitable for surface or suspended installation onto or under covered ceilings. Two sealed 1/2" trade size conduit entry points located at ends. See options for pre-wired whips or cords.

LISTINGS: IP67 rated for dust and water ingress. Suitable for 1500 PSI high pressure hosedowns. UL listed per UL_1598 for wet locations. Nema 4x rated. Drivers and LEDs are covered by a 5 year warranty, the remaining fixture is covered by a 10 year warranty. This product Series is both Build America Buy America (B.A.B.A.) & Buy American Act (B.A.A.) compliant.

PRODUCT DRAWINGS

SEG 1540 REFERENCE DIMENSIONS



Wet Location Vaportight: WL-SEG-1540-LED

Wet Location 15" x 4' Linear Vaportight LED Luminaire for Surface or Pendant Mounting

ENERGY DATA

STD SEG 1540 (APPROX ¹ DELIVERED LUMENS)											
ENCLOSURE SIZE	LED PACKAGE	CRI	DIMMING SELECTION	CLEAR LENS			FROST LENS			AMBIENT TEMP	
				LUMENS ¹	WATTS ²	EFFICACY ³ (lm/W)	LUMENS ¹	WATTS ²	EFFICACY ³ (lm/W)	MINIMUM	MAXIMUM
1540	2 LO	83	0-10V 1%	7,625	55	139	6,710	55	122	-20°C (-4°F)	40°C (104°F)
1540	2 LO	83	0-10V 5%	7,625	55	139	6,710	55	122	-20°C (-4°F)	45°C (113°F)
1540	2 LO	90+	0-10V 1%	7,310	55	133	6,470	55	118	-20°C (-4°F)	40°C (104°F)
1540	2 LO	90+	0-10V 5%	7,310	55	133	6,470	55	118	-20°C (-4°F)	45°C (113°F)
1540	3 LO	83	0-10V 1%	11,430	82	139	10,065	82	123	-20°C (-4°F)	40°C (104°F)
1540	3 LO	83	0-10V 5%	11,430	82	139	10,065	82	123	-20°C (-4°F)	45°C (113°F)
1540	3 LO	90+	0-10V 1%	10,960	82	134	9,710	82	118	-20°C (-4°F)	40°C (104°F)
1540	3 LO	90+	0-10V 5%	10,960	82	134	9,710	82	118	-20°C (-4°F)	45°C (113°F)
1540	4 LO	83	0-10V 1%	15,250	110	139	13,420	110	122	-20°C (-4°F)	40°C (104°F)
1540	4 LO	83	0-10V 5%	15,250	110	139	13,420	110	122	-20°C (-4°F)	45°C (113°F)
1540	4 LO	90+	0-10V 1%	14,620	110	133	12,940	110	118	-20°C (-4°F)	40°C (104°F)
1540	4 LO	90+	0-10V 5%	14,620	110	133	12,940	110	118	-20°C (-4°F)	45°C (113°F)
1540	6 LO	83	0-10V 1%	22,875	164	139	20,130	164	122	-20°C (-4°F)	35°C (95°F)
1540	6 LO	83	0-10V 5%	22,875	164	139	20,130	164	122	-20°C (-4°F)	45°C (113°F)
1540	6 LO	90+	0-10V 1%	21,936	164	134	19,424	164	118	-20°C (-4°F)	35°C (95°F)
1540	6 LO	90+	0-10V 5%	21,936	164	134	19,424	164	118	-20°C (-4°F)	45°C (113°F)
1540	2 HI	83	0-10V 1%	22,047	139	159	19,692	139	142	-20°C (-4°F)	35°C (95°F)
1540	2 HI	83	0-10V 5%	22,047	139	159	19,692	139	142	-40°C (-40°F)	45°C (113°F)
1540	2 HI	90+	0-10V 1%	19,181	139	138	17,132	139	123	-20°C (-4°F)	35°C (95°F)
1540	2 HI	90+	0-10V 5%	19,181	139	138	17,132	139	123	-40°C (-40°F)	45°C (113°F)
1540	3 HI	83	0-10V 1%	33,070	208	159	29,536	208	142	-20°C (-4°F)	35°C (95°F)
1540	3 HI	83	0-10V 5%	33,070	208	159	29,536	208	142	-40°C (-40°F)	40°C (104°F)
1540	3 HI	90+	0-10V 1%	28,770	208	138	25,696	208	124	-20°C (-4°F)	35°C (95°F)
1540	3 HI	90+	0-10V 5%	28,770	208	138	25,696	208	124	-40°C (-40°F)	40°C (104°F)
1540	4 HI	83	0-10V 1%	44,095	277	159	39,384	277	142	-20°C (-4°F)	35°C (95°F)
1540	4 HI	83	0-10V 5%	44,095	277	159	39,384	277	142	-40°C (-40°F)	40°C (104°F)
1540	4 HI	90+	0-10V 1%	38,363	277	138	34,264	277	124	-20°C (-4°F)	35°C (95°F)
1540	4 HI	90+	0-10V 5%	38,363	277	138	34,264	277	124	-40°C (-40°F)	40°C (104°F)
1540	EM10 ¹	NA	NA	1050-1390	4	NA	930-1230	4	NA	0°C (32°F)	35°C (95°F)

¹ DELIVERED LUMEN DATA IS EXTRAPOLATED FROM MEASURED DATA @ 25°C WITH NO EXTRA OPTIONS. VARIANCES WILL OCCUR WHEN OPTIONS ARE CHOSEN

² WATTAGE IS MEASURED WITH 4000K SELECTION @ 120VAC and Tambient = 25°C. WATTAGES MAY VARY WITH ALTERNATE CONFIGURATIONS

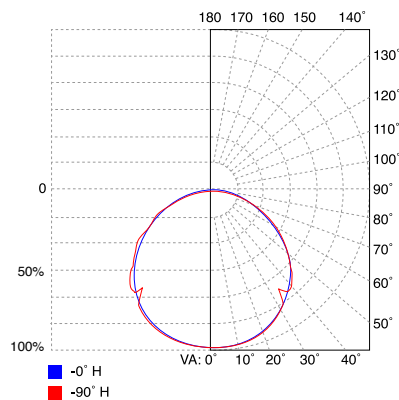
³ EFFICACY CALCULATED USING 4000K CCT DATA.

⁴ TEMP RATING MAY VARY WITH SPECIFIED DRIVERS OR ANY NON STANDARD SELECTION

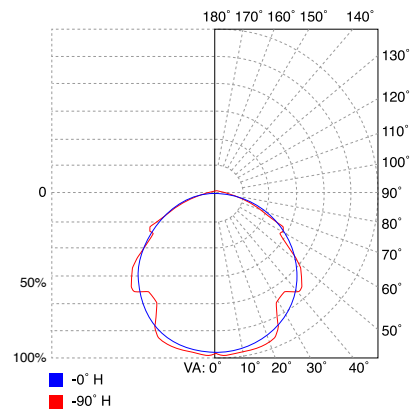
* 90 MINUTE 10W EMERGENCY DRIVER; LUMENS CALCULATED BASED ON FIXTURE EFFICACY (EX: 10W x 100lm/W = 1000lm Delivered)

PHOTOMETRICS

SEG 1540 FP



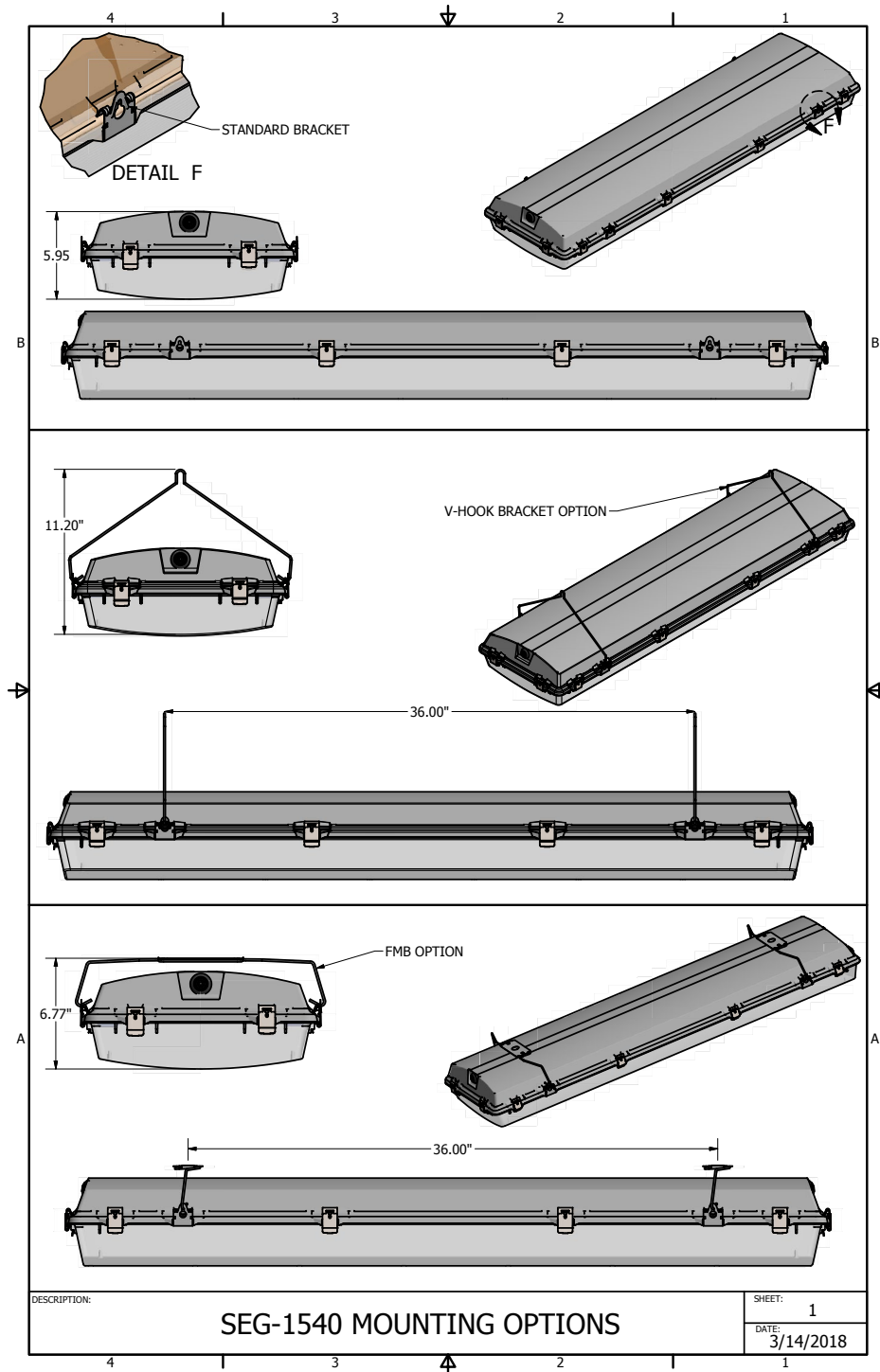
SEG 1540 CP



Wet Location Vaportight: WL-SEG-1540-LED

Wet Location 15" x 4' Linear Vaportight LED Luminaire for Surface or Pendant Mounting

MOUNTING OPTIONS



Wet Location Vaportight: WL-SEG-1540-LED

Wet Location 15" x 4' Linear Vaportight LED Luminaire for Surface or Pendant Mounting

MOUNTING OPTIONS

