

# Wet Location 1X1 Troffers

1x1 High Efficiency LED Luminaire for Surface and Recessed Installations

- **IP65 Rating**
- **UL Listed for Wet Locations**
- **Up to 4400 lm Delivered**
- **Made in the USA by a Family Owned US Corporation**



DISCLAIMER: Although KURTZON has prepared the information contained in this document with all due care, KURTZON does not warrant or represent that the information is free from errors or omission. While the information is considered to be true and correct at the date of publication, changes in circumstances after the time of publication may impact on the accuracy of the information. The information may change without notice and KURTZON is not in any way liable for the accuracy of any information printed and stored or in any way interpreted or used.

## ORDERING GUIDE

Series	Installation	Material	Size	Source	CCT	Voltage	Options
<b>WL</b>							
<b>Series</b>	<b>Install Type</b>	<b>Material</b>	<b>Size</b>	<b>Source</b>	<b>CCT</b>	<b>Voltage</b>	<b>Options</b>
<b>WL</b>	<b>F: Flange</b>	1: White CRS Hsg. & White CRS Door 2: White CRS Hsg. & Polished 304 SS Door 3: White 304 SS Hsg. & Polished 304 SS Door	<b>1X1:</b> Nominal 1x1 Hsg.	<b>LO</b> <b>MED</b> <b>HI</b>	<b>80+ CRI:</b> 830 = 3000K CCT 835 = 3500K CCT 840 = 4000K CCT 850 = 5000K CCT  <b>90+ CRI:</b> 930 = 3000K CCT 935 = 3500K CCT	<b>120V</b> <b>277V</b> <b>UNV</b> <b>347V*</b>	<b>FC:</b> Fuse & Holder (One Supplied Per Circuit) <b>EDL:</b> -40F Electronic Driver <b>EM7:</b> 7W EM Battery Pack (Specify Input Voltage) <b>WHT:</b> White Finished Door & HSG (for ss that comes Polished Std) <b>SSP:</b> Stainless Steel Polished #4 Finish (for ss that comes white std) <b>PxL:</b> Programmed to User Specified Lumen Value.∞ <b>PxW:</b> Programmed to User Specified Wattage Value.∞ <b>10KV:</b> 10KV Parallel Surge Protection (One Supplied Per Circuit) <b>.125 FROST:</b> 1/8" FROSTED ACRYLIC LENS <b>WHIP:</b> Must Specify Length and Wire Qty
	<b>S: Surface</b>	1: White CRS Hsg. & White CRS Door 2: White CRS Hsg. & White 304 SS Door 3: Polished 304 SS Hsg. & Polished 304 SS Door					

# Wet Location 1X1 Troffers

1x1 High Efficiency LED Luminaire for Surface and Recessed Installations

## SPECIFICATIONS

**HOUSING:** Hole free construction and robotically Seam welded 16Ga Stainless Steel or CRS enclosure.

**DOOR FRAME:** 16-gauge CRS or type 304 stainless steel one piece inset door frame hinged to housing with two stainless steel cables. Door frame secured with four captive stainless steel fasteners.

**GASKETS:** Closed cell 100% pure neoprene gasket with vulcanized corners making a one-piece oil and solvent resistant gasket system.

**LENS:** High durability .135" thick virgin acrylic with P12 prismatic pattern inverted. See "Options" for other choices.

**LEDS:** LED boards are available in 80 or 90 CRI, 3000K, 3500K, or 4000K in 3 standard lumen output levels.

**DRIVERS:** Class P, Class 2, 0-10v 1% dimming driver standard. see options for low ambient temp availability.

**REFLECTOR:** Die formed metal with high reflectance white polyester powder coat finish. Typical reflectivity 92%.

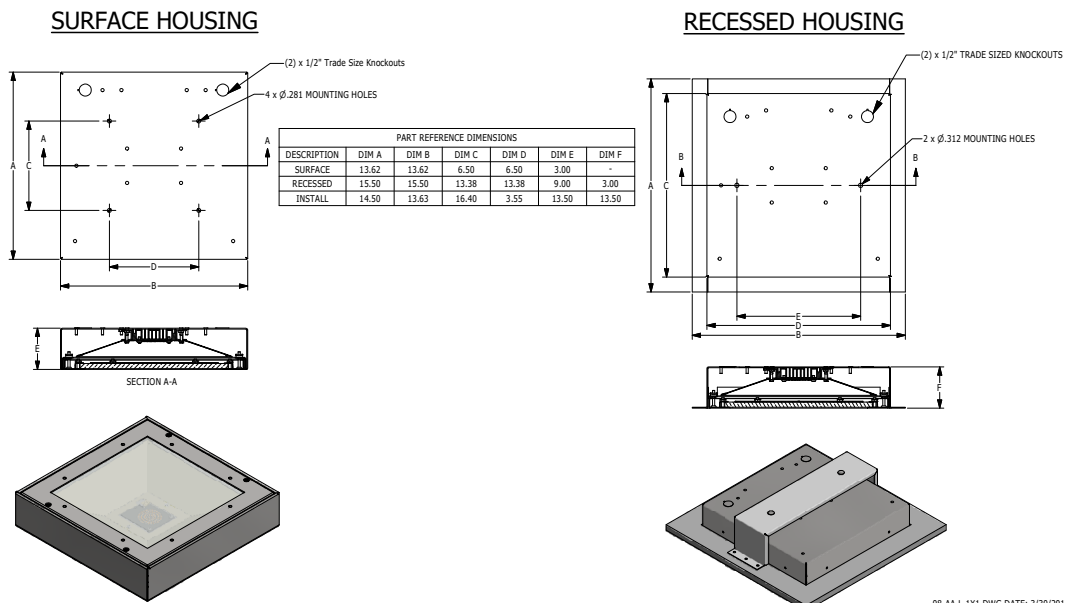
**INSTALL FLANGE:** Recessed flange fixtures are installed with (1) yoke mounting kits including yokes, carriage bolts, nuts, & gasketed washers. Supply entry via 1/2" trade size flattened knockouts. for Non-IC installation.

**INSTALL SURFACE:** Four .312" holes for surface mounting. One .875" flattened knockout for wiring.

**FINISH:** Gloss white high reflectance 1000 hr. salt spray polyester powder coat finish standard for all housings and CRS door frames. Stainless steel doorframes are satin polished unless option WHT is chosen. See "SSP" option for satin (#4 ) polished stainless steel housings.

**LISTINGS:** IP65 rated for dust and water ingress. UL listed per UL\_1598 for wet locations. Drivers and LEDs are covered by a 5 year warranty, the remaining fixture is covered by a 10 year warranty.

## PRODUCT DRAWINGS



# Wet Location 1X1 Troffers

1x1 High Efficiency LED Luminaire for Surface and Recessed Installations

## ENERGY DATA

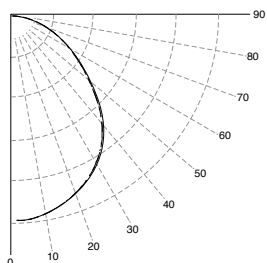
1X1 SURFACE AND RECESSED TROFFER										
FITTURE SIZE	LIGHT PACKAGE	CLEAR LENS			FROST LENS			AMB TEMP RATING <sup>4</sup>		STANDARD DIMMING
		LUMENS <sup>1</sup>	WATTS <sup>2</sup>	EFFICACY <sup>3</sup>	LUMENS <sup>1</sup>	WATTS <sup>2</sup>	EFFICACY <sup>3</sup>	MIN	MAX	
1X1	LO	2,300	20	115	<b>2,114</b>	<b>20</b>	106	-20°C (-4°F)	40°C(104°F)	0-10V 1%
1X1	MID	3,270	30	109	3,000	30	100	-20°C (-4°F)	40°C(104°F)	0-10V 1%
1X1	HI	4,840	45	108	<b>4,445</b>	<b>45</b>	99	-20°C (-4°F)	40°C(104°F)	0-10V 1%

- <sup>1</sup> DELIVERED LUMEN DATA IS EXTRAPOLATED FROM MEASURED DATA @25C WITH NO EXTRA OPTIONS. VARIANCES WILL OCCUR WITH ALTERNATE SELECTIONS
- <sup>2</sup> WATTAGE IS MEASURED WITH 4000K SELECTION @ 120vAC AND Tambient = 25C. WATTAGES MAY VARY WITH ALTERNATE CONFIGURATIONS
- <sup>3</sup> EFFICACY CALCULATED USING 4000K CCT DATA.
- <sup>4</sup> MAX AMBIENT TEMP RATING. TEMP RATING MAY VARY WITH ALTERNATE SPECIFIED DRIVERS OR ANY NON STANDARD SELECTION
- <sup>5</sup> LUMEN OUTPUT OF 90 MINUTE 7W EMERGENCY DRIVER IS CALCULATED BASED ON EFFICACY (7W) \* (EFFICACY) = DELIVERED LUMENS.

## PHOTOMETRICS

### WL-F-1X1-HI830-UNV-4

Report No: 19966.0  
 Total Lumens: 4,445  
 Wattage: 45.285  
 Efficacy: 98.1 (Lumens Per Watt)  
 Fixture Size: 1'x1'  
 Key:  
 - - - - 0  
 ······ 45  
 \_\_\_\_\_ 90



### WL-F-1X1-LO830-UNV-4

Report No: 19967.0  
 Total Lumens: 2,114  
 Wattage: 20.390  
 Efficacy: 103.7 (Lumens Per Watt)  
 Fixture Size: 1'x1'  
 Key:  
 - - - - 0  
 ······ 45  
 \_\_\_\_\_ 90

