

Wet Location Profile Wrap: WL-D-LED

Sealed 4' Linear High Efficiency LED Surface D-Profile Wrap

- **IP55 Rated**
- **ETL Listed for Wet Locations**
- **Several mounting options for surface or suspended installation**
- **End to end row mounting optional**
- **DLC Listing available for some configurations**
- **B.A.A. Compliant & Made in the USA by a Family Owned US Corporation**



Not all product variations listed on this page are DLC qualified. Visit <https://www.designlights.org/dli> to confirm qualification.

DISCLAIMER: Although KURTZON has prepared the information contained in this document with all due care, KURTZON does not warrant or represent that the information is free from errors or omission. Whilst the information is considered to be true and correct at the date of publication, changes in circumstances after the time of publication may impact on the accuracy of the information. The information may change without notice and KURTZON is not in any way liable for the accuracy of any information printed and stored or in any way interpreted or used.

ORDERING GUIDE

Series	Lens Type	Material	Series	Row Qty.	LED Type	CCT/CRI	Voltage	Options
WL			40		LEDR			
Series	Lens Type	Material	Size	Row Qty.	LED Type	CCT/CRI	Voltage	Options
WL	D Frosted Acrylic	1 White CRS Ext. Hsg. & White CRS Int.	40 4' Housing	2	LEDR	83 CRI:	120V	FC Fuse & Holder (One Supplied Per Circuit)
				3		830 3000K	277V	2/ED Two Drivers/Two Circuits
	LPD Clear Linear Prismatic Poly	3 Polished 304 SS Ext. & 304 SS Int.		4		835 3500K	UNV	EDL -40F Electronic Driver
						840 4000K	347V*	EM10 10W Integral LED EM (Specify Input Voltage)
	FPD Frosted Linear Prismatic Poly	4 White Alum Ext. & White CRS Int.				850 5000K		CRM Continuous Row Mounting
						90+ CRI:		TP Stainless Steel Tamperproof Fasteners
						935 3500K		SW Sealed Wireway for Conduit End Feed (each end)
						940 4000K		WHT White Finished Door & HSG
						950 5000K		PMB (2) Pendant Mount Brackets (Pendants or Chains by Others)
								CMB (2) Corner Mount Brackets
					AMB (2) Adjustable Mount Brackets			
					PxL Programmed to User Specified Lumen Value.			
					PxW Programmed to User Specified Wattage Value.			
					10KV 10KV Parallel Surge Protection (One Supplied Per Circuit)			
					GTD Generator Transfer Device			
					WHIP Must Specify Length and Wire Qty			
					OCC Occupancy Sensor (Must Specify Type)			
					AMW Anti-Microbial White Powdercoat			

Ordering Notes, If Applicable

Wet Location Profile Wrap: WL-D-LED

Sealed 4' Linear High Efficiency LED Surface D-Profile Wrap

SPECIFICATIONS

HOUSING: Double channel housing of 20Ga 1008 Cold Rolled Steel, 20Ga 304 Stainless Steel, or .040" 3003 Aluminum construction.

END CAPS: Precision stamped 20Ga 304 Stainless Steel end caps secured to housing with captive stainless steel flush head screws. SW Option provides a 3 piece conduit hub/ring/plug assembly installed in the endcap.

GASKETS: Closed cell 100% pure neoprene gasketing. Resists aging, grease and solvents.

OPTICS: All lensing is extruded from a nominal 1/8" plastic material. Available in frosted acrylic, Clear Polycarbonate with linear ribs, or Clear Polycarbonate with a frosted inlay

LEDS: Commercially available in a wide variety of Color Temperature (CCT), FLUX, and CRI. Highly efficient and consistent color maintained to 3 SDMC for color critical applications. B50/L70 and compliant with Zhaga recognized hole patterns. Consult factory for LED options or configurations not listed below.

DRIVERS: Standard Universal Voltage Class 2 drivers are 0-10v Dimmable to 1% for most LED configurations. They come with at least 2.5Kv surge protection, have less than 10% THD at max load, Ballast Factor Greater than .95 and are programmable to match specific lumen or wattage requirements. Drivers with higher input voltage ratings are available, consult factory for driver specifications.

REFLECTOR: Die formed metal with high reflectance white polyester powder coat finish. Typical reflectivity 92%.

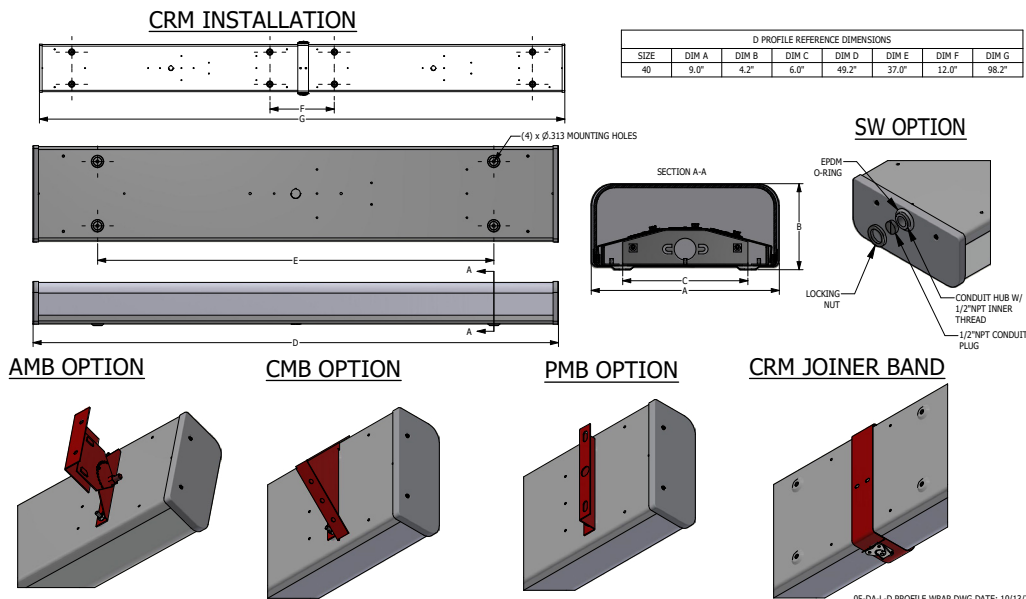
INSTALL: Suitable for wet location installation under covered ceilings only. Luminaire is provided with four 5/16" debossed holes for mounting. Power is brought in through 1/2" flattened conduit K.O. located on the bottom of luminaire. Power can also be brought through the end of the luminaire with SW option selected. Suitable for thru wiring.

ROWS: Joiner bands provided for continuous row mounting (See Option: CRM). Please specify number of fixtures in each run.

FINISH: Stainless steel housings are satin polished unless WHT or AMW options are selected. All other materials are provided with gloss high reflectance white polyester powder coat with 1000hr salt spray test per ASTM B117. AMW option provides a white anti-microbial polyester powder coat to all exposed surfaces.

LISTINGS: IP55 rated for dust and water ingress. ETL listed per UL_1598 for wet locations. Drivers and LEDs are covered by a 5 year warranty, the remaining fixture is covered by a 10 year warranty. This product is Buy American Act (B.A.A.) compliant.

PRODUCT DRAWINGS



Wet Location Profile Wrap: WL-D-LED

Sealed 4' Linear High Efficiency LED Surface D-Profile Wrap

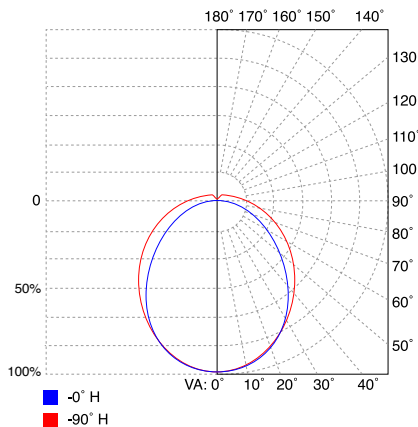
ENERGY DATA

"D" PROFILE LED WRAP (APPROX ¹ LUMENS DELIVERED)											
LENS TYPE	ENCLOSURE SIZE	LED SELECTION	STANDARD DIMMING	83 CRI (3000K - 5000K)				90 CRI (3500K - 4000K)			
				LUMENS	WATTS ²	EFFICACY ³	MAX AMB TEMP ⁴	LUMENS	WATTS ²	EFFICACY ³	MAX AMB TEMP ⁴
D	40	2LEDR	0-10V 1%	8,040	56	144	40°C (104°F)	7,767	56	139	40°C (104°F)
FPD	40	2LEDR	0-10V 1%	6,360	56	114	40°C (104°F)	6,144	56	110	40°C (104°F)
LPD	40	2LEDR	0-10V 1%	7,960	56	142	40°C (104°F)	7,689	56	137	40°C (104°F)
D	40	3LEDR	0-10V 1%	11,952	85	141	40°C (104°F)	11,546	85	136	40°C (104°F)
FPD	40	3LEDR	0-10V 1%	9,470	85	111	40°C (104°F)	9,148	85	108	40°C (104°F)
LPD	40	3LEDR	0-10V 1%	11,830	85	139	40°C (104°F)	11,428	85	134	40°C (104°F)
D	40	4LEDR	0-10V 1%	14,423	112	129	40°C (104°F)	13,933	112	124	40°C (104°F)
FPD	40	4LEDR	0-10V 1%	13,050	112	117	40°C (104°F)	12,606	112	113	40°C (104°F)
LPD	40	4LEDR	0-10V 1%	14,314	112	128	40°C (104°F)	13,827	112	123	40°C (104°F)

- ¹ DELIVERED LUMEN DATA IS EXTRAPOLATED FROM MEASURED DATA @25C WITH NO EXTRA OPTIONS. VARIANCES WILL OCCUR WHEN OTHER SELECTIONS ARE MADE
- ² WATTAGE IS MEASURED WITH 4000K SELECTION @ 120vAC AND Tambient = 25C. WATTAGES MAY VARY WITH ALTERNATE CONFIGURATIONS
- ³ EFFICACY CALCULATED USING 4000K CCT DATA.
- ⁴ MAX AMBIENT TEMP RATING. TEMP RATING MAY VARY WITH ALTERNATE SPECIFIED DRIVERS OR ANY NON STANDARD SELECTION
- ⁵ DELIVERED LUMENS FOR EM10 = (10W)*(EFFICACY) = DELIVERED LUMENS. EM10 ADDS 4W TO TOTAL LUMINARE

PHOTOMETRICS

D Optics



LPD Optics

