

# Vandal Location Vaportight

Vandal Location 7" x 4' Linear Vaportight LED Luminaire for Surface or Pendant Mounting

- **High Lumen Packages, up to 19,200Lm Delivered**
- **Ambient operating temps as Low as -40C(-40F) and as High as +40C(+104F) (Temps Vary by Configuration. Verify in Energy Data Section)**
- **IP65 / IP66 / IP67**
- **1500 PSI hosedown**
- **UL 1598 Wet Location**
- **Marine grade 316 stainless steel latches & Mounting brackets**
- **Nema4X**
- **UL 5VA Rated (will not melt or burn)**
- **Polycarbonate Lens: Clear / Frosted**
- **10 Year warranty**
- **B.A.A. & B.A.B.A Compliant & Made in the USA by a Family Owned US Corporation**



DISCLAIMER: Although KURTZON has prepared the information contained in this document with all due care, KURTZON does not warrant or represent that the information is free from errors or omission. Whilst the information is considered to be true and correct at the date of publication, changes in circumstances after the time of publication may impact on the accuracy of the information. The information may change without notice and KURTZON is not in any way liable for the accuracy of any information printed and stored or in any way interpreted or used.



## ORDERING GUIDE

| Series     | Lumen Package  | CCT   | Lens  | Voltage  | Controls | Mounting   | Sensors | Options |
|------------|--|---|---|--|----------|--|---------|---------|
| WL-SEG-740 |  |   |   |  |          | TPL  |         |         |
| 1 - SERIES | 2 - LUMEN PACKAGE  | 3 - CCT   | 4 - LENS  | 6 - CONTROLS   |          | 8 - SENSORS (Not Required)   |         |         |
| WL-SEG-740 | <b>1LO:</b> 1 Row of Low Flux LED's<br><b>2LO:</b> 2 Rows of Low Flux LED's<br><b>2HI:</b> 2 Rows of High Flux LED's | <b>83 CRI:</b><br><b>830</b> = 3000K CCT<br><b>835</b> = 3500K CCT<br><b>840</b> = 4000K CCT<br><b>850</b> = 5000K CCT<br><br><b>90+ CRI:</b><br><b>935</b> = 3500K CCT<br><b>940</b> = 4000K CCT<br><i>Not Available in "HI" lumen package</i> | <b>CP:</b> Clear Polycarbonate<br><b>FP:</b> Frost Polycarbonate<br><b>CPD:</b> Diffused Clear Poly<br><b>FPD:</b> Diffused Frost Poly<br><br><b>5 - VOLTAGE</b><br><b>UNV:</b> (120-277 Vac)<br><b>HV:</b> (347-480 Vac) | <b>DIM1:</b> 0-10V 1%<br><b>DIM5:</b> 0-10V 5%<br><b>DALI:</b> DALI 1%<br><b>LUTRON:</b> (Specify Type)<br><b>2/ED:</b> 2 Circuit Switching<br><b>OTHER:</b> (Must Specify)            |          | <b>OCC MW:</b> Microwave Occ Sensor (Internal 32' MAX)<br><b>OCC HB:</b> Highbay Occ Sensor (End Mount 20'-40')<br><b>OCC LB:</b> Lowbay Occ Sensor (End Mount 8'-10')<br><b>DL/OCC HB:</b> Daylight & Highbay Occ Sensor (End Mount 40' MAX)<br><b>DL/OCC LB:</b> Daylight & Lowbay Occ Sensor (End Mount 8' MAX)<br><b>OTHERS:</b> Must Specify  |         |         |
|            |  |   |   | <b>7 - MOUNTING</b>  |          | <b>9 - OPTIONS (Not Required)</b>  |         |         |
|            |  |   |   | <b>CMH:</b> Chain Mtg Hooks<br><b>MB45:</b> 45° Mtg Bracket<br><b>SCM:</b> Single Conduit Stem<br><b>DCM:</b> Dual Conduit Stem<br><b>TPL:</b> Tamperproof Latches**<br>** must select |          | <b>PXW:</b> Program to Specified Wattage (Replace X with Watts)<br><b>PXL:</b> Program to Specified Lumens (Replace X with Lumens)<br><b>10kV:</b> 10kV Surge Protection (one per specified circuit)<br><b>3WP:</b> 3 Wire Cord W/Plug must provide specs.<br><b>WHIP:</b> Flex whip installed must provide specs<br><b>EM10:</b> 10W Integral Emergency Driver (Specify Voltage & Switching)<br><b>FF:</b> Fuse & Fuse Holder (One per Specified Circuit) |         |         |
|            |  |   |   |  |          |  |         |         |

# Vandal Location Vaportight

Vandal Location 7" x 4' Linear Vaportight LED Luminaire for Surface or Pendant Mounting

## SPECIFICATIONS

**HOUSING:** Injection molded, .125" thick Hole Free White Fiberglass body with a 5VA Flame Rating

**LENS:** Injection molded Heavy gauge smooth or ribbed polycarbonate material available Clear or frosted. Secured by Captive Stainless Steel cables.

**REFLECTOR:** Standard (92%) High Reflectance white 22 gauge metal. Formed wiring cover for rigidity. Removable without tools or screws.

**GASKETS:** One piece urethane extruded foam with smooth surface.

**LATCHES:** Eight (8) 316 Stainless Steel over-center latches secure lens to housing. Latches are secured closed with #6 Tamperproof screws. Provided separate.

**MOUNTING:** Provided with (2) mounting brackets for suspending (cables by others). See mounting options for other configurations.

**LEDS:** Commercially available in a wide variety of Color Temperature (CCT), FLUX, and CRI. Highly efficient and consistent color maintained to 3 SDMC for color critical applications. B50/L70 and compliant with Zhaga recognized hole patterns. Consult factory for LED options or configurations not listed below.

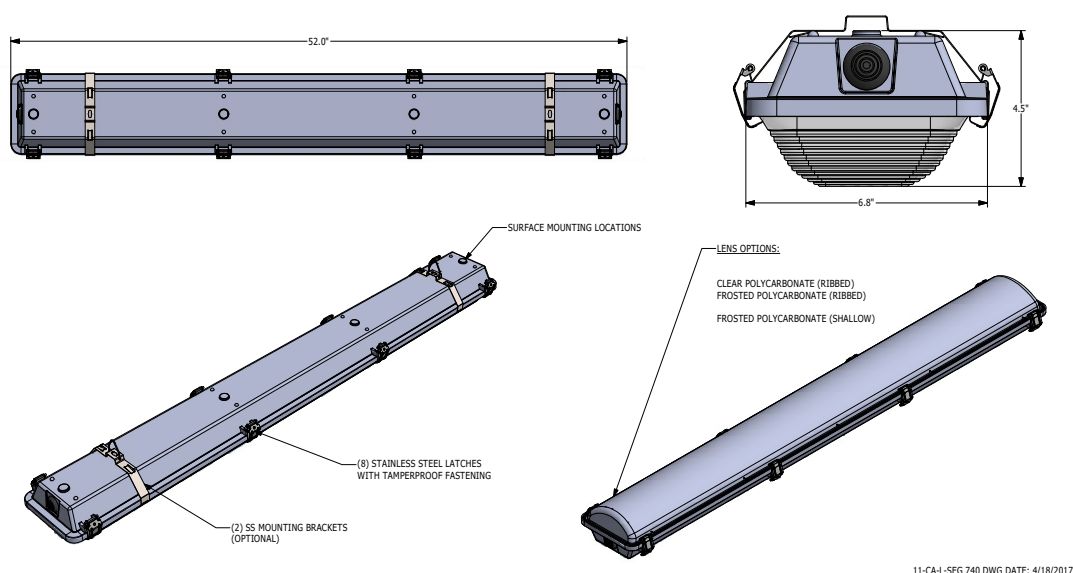
**DRIVERS:** Standard Universal Voltage Class 2 drivers are 0-10v Dimmable to 1% for most LED configurations. They come with at least 2.5Kv surge protection, have less than 10% THD at max load, Ballast Factor Greater than .95 and are programmable to match specific lumen or wattage requirements. Drivers with higher input voltage ratings are available, consult factory for driver specifications.

**INSTALLATION:** Two sealed 1/2 inch trade size conduit entry points located at each end. See options for pre-wired whips or cords.

**LISTINGS:** IP67 rated for dust and water ingress. Suitable for 1500 PSI high pressure hosedowns. UL listed per UL\_1598 for wet locations. Nema 4x rated. Drivers and LEDs are covered by a 5 year warranty, the remaining fixture is covered by a 10 year warranty. This product Series is both Build America Buy America (B.A.B.A.) & Buy American Act (B.A.A.) compliant.

## PRODUCT DRAWINGS

### SEG 740 REFERENCE DIMENSIONS



11-CA-L-SEG 740 DWG DATE: 4/18/2017

# Vandal Location Vaportight

Vandal Location 7" x 4' Linear Vaportight LED Luminaire for Surface or Pendant Mounting

## ENERGY DATA

| STD SEG 740 (APROX <sup>1</sup> DELIVERED LUMENS) |                   |                   |     |                     |                    |                              |                     |                    |                              |               |                      |
|---|-------------------|-------------------|-----|---------------------|--------------------|------------------------------|---------------------|--------------------|------------------------------|---------------|----------------------|
| ENCLOSURE SIZE                                    | LED PACKAGE       | DIMMING SELECTION | CRI | CLEAR LENS          |                    |                              | FROST LENS          |                    |                              | AMBIENT TEMP  |                      |
|   |                   |                   |     | LUMENS <sup>1</sup> | WATTS <sup>2</sup> | EFFICACY <sup>3</sup> (Lm/W) | LUMENS <sup>1</sup> | WATTS <sup>2</sup> | EFFICACY <sup>3</sup> (Lm/W) | MINIMUM       | MAXIMUM <sup>4</sup> |
| 740   | 1 LO              | 0-10V 1%          | 83  | 3,500               | 29                 | 121                          | 3,045               | 29                 | 105                          | -20°C (-4°F)  | 35°C (95°F)          |
| 740   | 1 LO              | 0-10V 5%          | 83  | 3,500               | 29                 | 121                          | 3,045               | 29                 | 105                          | -20°C (-4°F)  | 40°C (104°F)         |
| 740   | 1 LO              | 0-10V 1%          | 90+ | 2,900               | 29                 | 100                          | 2,523               | 29                 | 87                           | -20°C (-4°F)  | 35°C (95°F)          |
| 740   | 1 LO              | 0-10V 5%          | 90+ | 2,900               | 29                 | 100                          | 2,523               | 29                 | 87                           | -20°C (-4°F)  | 40°C (104°F)         |
| 740   | 2 LO              | 0-10V 1%          | 83  | 7,119               | 55                 | 129                          | 6,194               | 55                 | 113                          | -20°C (-4°F)  | 35°C (95°F)          |
| 740   | 2 LO              | 0-10V 5%          | 83  | 7,119               | 54                 | 132                          | 6,194               | 54                 | 115                          | -20°C (-4°F)  | 40°C (104°F)         |
| 740   | 2 LO              | 0-10V 1%          | 90+ | 5,900               | 55                 | 107                          | 5,133               | 55                 | 93                           | -20°C (-4°F)  | 35°C (95°F)          |
| 740   | 2 LO              | 0-10V 5%          | 90+ | 5,900               | 54                 | 109                          | 5,133               | 54                 | 95                           | -20°C (-4°F)  | 40°C (104°F)         |
| 740   | 2 HI              | 0-10V 1%          | 83  | 17,600              | 140                | 126                          | 15,312              | 140                | 109                          | -20°C (-4°F)  | 30°C (86°F)          |
| 740   | 2 HI              | 0-10V 5%          | 83  | 19,220              | 150                | 128                          | 16,721              | 150                | 111                          | -40°C (-40°F) | 40°C (104°F)         |
| 740   | EM10 <sup>5</sup> | NA                | NA  | 1000-1300           | 4                  | NA                           | 870-1130            | 4                  | NA                           | 0°C (32°F)    | 35°C (95°F)          |

<sup>1</sup> DELIVERED LUMEN DATA IS EXTRAPOLATED FROM MEASURED DATA @25C WITH NO EXTRA OPTIONS. VARIANCES WILL OCCUR WHEN OPTIONS ARE CHOSEN

<sup>2</sup> WATTAGE IS MEASURED WITH 4000K SELECTION @ 120vAC AND Tambient = 25C. WATTAGES MAY VARY WITH ALTERNATE CONFIGURATIONS

<sup>3</sup> EFFICACY CALCULATED USING 4000K CCT DATA

<sup>4</sup> TEMP RATING MAY VARY WITH SPECIFIED DRIVERS OR ANY NON STANDARD SELECTION

<sup>5</sup> 90 MINUTE 10W EMERGENCY DRIVER; LUMENS CALCULATED BASED ON FIXTURE EFFICACY. (EX: 10W x 100Lm/W = 1000Lm Delivered)

## PHOTOMETRICS

### WL-SEG-740-2HI840-CDP-UNV-DIM5

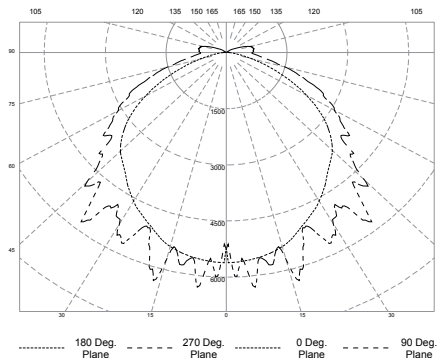
Report No: 11624894.16

Total Lumens: 19,220

Wattage: 150.1

Efficacy: 128.1 (Lumens Per Watt)

Fixture Size: 7"x4'



### WL-SEG-740-2LO840-CDP-UNV-DIM1

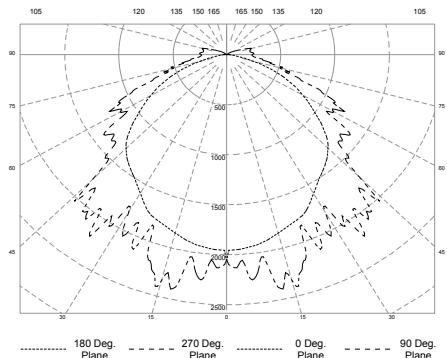
Report No: 11624894.17

Total Lumens: 7,119

Wattage: 54.54

Efficacy: 130.5 (Lumens Per Watt)

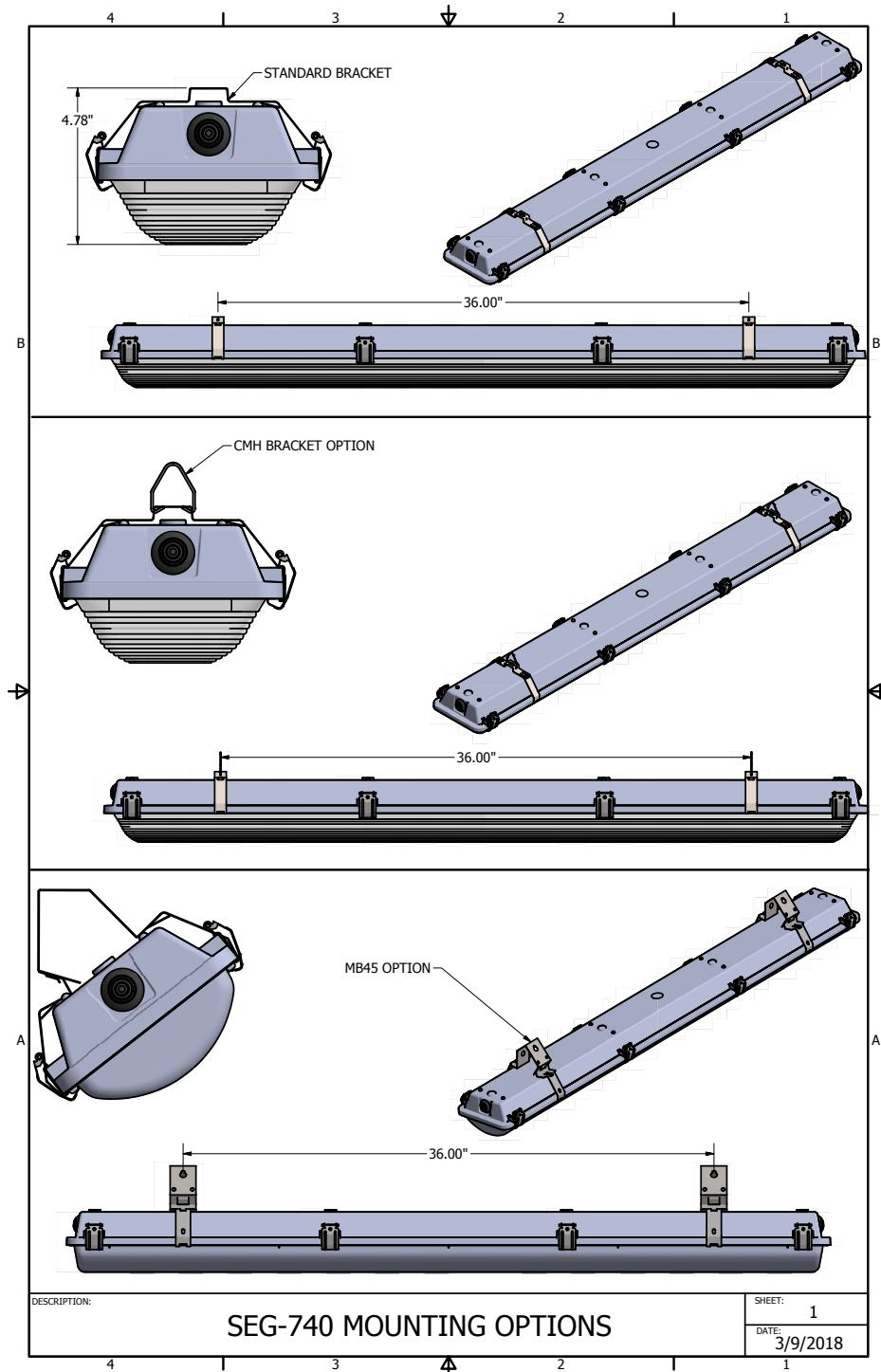
Fixture Size: 7"x4'



# Vandal Location Vaportight

Vandal Location 7" x 4' Linear Vaportight LED Luminaire for Surface or Pendant Mounting

## MOUNTING OPTIONS



# Vandal Location Vaportight

Vandal Location 7" x 4' Linear Vaportight LED Luminaire for Surface or Pendant Mounting

## MOUNTING OPTIONS

