

# Vandal-Resistant C Profile Wrap

Sealed 4' Linear High Efficiency LED Surface C-Profile Wrap

- **DLC listed**
- **IP55 rated**
- **Several mounting options available**
- **ETL listed for wet locations**
- **Made in the USA by a Family Owned US Corporation**



To See All DLC Listings,  
Visit [www.Kurtzon.com/DLC](http://www.Kurtzon.com/DLC)

DISCLAIMER: Although KURTZON has prepared the information contained in this document with all due care, KURTZON does not warrant or represent that the information is free from errors or omission. Whilst the information is considered to be true and correct at the date of publication, changes in circumstances after the time of publication may impact on the accuracy of the information. The information may change without notice and KURTZON is not in any way liable for the accuracy of any information printed and stored or in any way interpreted or used.

## ORDERING GUIDE

Series      Lens Type      Material      Size      Source      CCT      Voltage      Options

VL

Series	Lens Type	Material	Size	Source	CCT	Voltage	Options
VL	<b>C:</b> Smooth Frosted Acrylic <b>LPC:</b> Clear Linear Prismatic Poly <b>FPC:</b> Frosted Linear Prismatic Poly	<b>1:</b> White CRS Ext. & White CRS Int. <b>3:</b> Polished 304 SS Ext. & 304 SS Int. <b>4:</b> White Alum Ext. & White CRS Int.	<b>40:</b> 4' Housing <b>MAX 4 Arrays Total</b>	<b>2/LEDR</b> <b>4/LEDR</b>	<b>80 CRI:</b> <b>830</b> = 3000K CCT <b>835</b> = 3500K CCT <b>840</b> = 4000K CCT <b>850</b> = 5000K CCT  <b>90 CRI:</b> <b>935</b> = 3500K CCT <b>940</b> = 4000K CCT	<b>120V</b> <b>277V</b> <b>UNV</b> <b>347V*</b>	<b>FC:</b> Fuse & Holder (One Supplied Per Circuit) <b>2/ED:</b> Two Drivers, (Two Circuits) <b>EDL:</b> -40F Electronic Driver <b>EM10:</b> 10W Integral LED Battery Pack (Specify Input Voltage) <b>CRM:</b> Continuous Row Mounting <b>SW:</b> Conduit Hub, Ring & Plug (installed on endcaps) <b>WHT:</b> White Finished Stainless Steel <b>PMB:</b> (2) Pendant Mount Brackets (Pendants or Chains by Others) <b>CMB:</b> (2) Corner Mount Brackets <b>AMB:</b> (2) Adjustable Mount Brackets <b>PxL:</b> Programmed to User Specified Lumen Value <b>PxW:</b> Programmed to User Specified Wattage Value <b>10KV:</b> 10KV Parallel Surge Protection (One Supplied Per Circuit) <b>GTD:</b> Generator Transfer Device <b>WHIP:</b> Must Specify Length and Wire Qty <b>OCC:</b> Occupancy Sensor (Must Specify Type) <b>GLED:</b> Green Led Array 540nm

# Vandal-Resistant C Profile Wrap

Sealed 4' Linear High Efficiency LED Surface C-Profile Wrap

## SPECIFICATIONS

**HOUSING:** Double channel housing of 20Ga 1008 Cold Rolled Steel, 20Ga 304 Stainless Steel, or .040" 3003 Aluminum construction.

**END CAPS:** Precision stamped 20Ga 304 Stainless Steel end caps secured to housing with captive stainless steel Torx head screws. SW Option provides a Sealed conduit hub installed on endcap.

**GASKETS:** NSF Listed closed cell microcellular extruded KleanLock SealPro gasket with vulcanized corners making a one-piece oil and solvent resistant gasket system.

**LENS:** Extruded .125" thick frosted acrylic or linear prismatic polycarbonate available in clear or with frost inlay for obscuring LED image

**LEDS:** Commercially available in a wide variety of Color Temperature (CCT), FLUX, and CRI. Highly efficient and consistent color maintained to 3 SDMC for color critical applications. B50/L70 and compliant with Zhaga recognized hole patterns. Consult factory for LED options or configurations not listed below.

**DRIVERS:** Standard Universal Voltage Class 2 drivers are 0-10v Dimmable to 1% for most LED configurations. They come with at least 2.5Kv surge protection, have less than 10% THD at max load, Ballast Factor Greater than .95 and are programmable to match specific lumen or wattage requirements. Drivers with higher input voltage ratings are available, consult factory for driver specifications.

**REFLECTOR:** Die formed metal with high reflectance white polyester powder coat finish. Typical reflectivity 92%.

**INSTALL SURFACE:** Suitable for wet locations under covered ceilings only. Four .312" debossed holes for surface mounting. One .875" (1/2" trade-size) flattened and knockout located on back of housing for wiring. See below for other mounting and supply entry options.

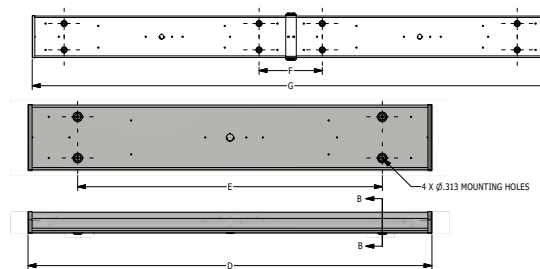
**ROWS:** Joiner bands provided for continuous row mounting (See Option: CRM). Please specify number of fixtures in each run.

**FINISH:** White powder coat finish (1,000 hour salt spray test) or 4-B (satin polish) stainless steel finish. See Options for white powder coated stainless.

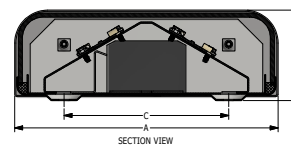
**LISTINGS:** IP55 rated for dust and water ingress. ETL listed per UL\_1598 for wet locations. Drivers and LEDs are covered by a 5 year warranty, the remaining fixture is covered by a 10 year warranty.

## PRODUCT DRAWINGS

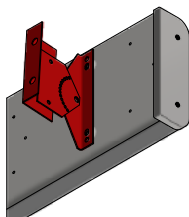
### CRM INSTALLATION



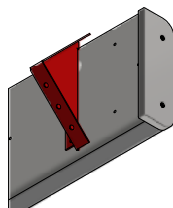
C PROFILE REFERENCE DIMENSIONS							
SIZE	DIM A	DIM B	DIM C	DIM D	DIM E	DIM F	DIM G
40	8.0"	2.8"	5.0"	49.2"	37.0"	12.0"	96.2"



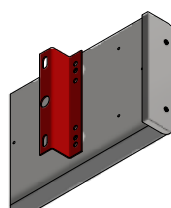
### AMB OPTION



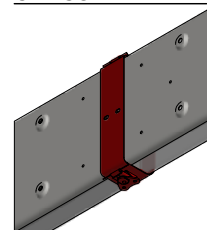
### CMB OPTION



### PMB OPTION



### CRM JOINER BAND



05-CA1-C PROFILE WRAP DWG DATE: 3/31/2017

# Vandal-Resistant C Profile Wrap

Sealed 4' Linear High Efficiency LED Surface C-Profile Wrap

## ENERGY DATA

"C" PROFILE LED WRAP (APPROX <sup>1</sup> LUMENS DELIVERED)											
LENS TYPE	ENCLOSURE SIZE	LED SELECTION	STANDARD DIMMING	83 CRI (3000K - 5000K)				90 CRI (3500K - 4000K)			
				LUMENS	WATTS <sup>2</sup>	EFFICACY <sup>3</sup>	MAX AMB TEMP <sup>4</sup>	LUMENS	WATTS <sup>2</sup>	EFFICACY <sup>3</sup>	MAX AMB TEMP <sup>4</sup>
C	40	2LEDR	0-10V 1%	8,171	56	146	40°C (104°F)	6,750	56	121	40°C (104°F)
FPC	40	2LEDR	0-10V 1%	6,150	56	110	40°C (104°F)	5,110	56	91	40°C (104°F)
LPC	40	2LEDR	0-10V 1%	7,700	56	138	40°C (104°F)	6,390	56	114	40°C (104°F)
C	40	4LEDR	0-10V 1%	14,285	112	128	40°C (104°F)	11,850	112	106	40°C (104°F)
FPC	40	4LEDR	0-10V 1%	10,800	112	96	40°C (104°F)	8970	112	80	40°C (104°F)
LPC	40	4LEDR	0-10V 1%	13,521	112	121	40°C (104°F)	11220	112	100	40°C (104°F)

- <sup>1</sup> DELIVERED LUMEN DATA IS EXTRAPOLATED FROM MEASURED DATA @ 25C WITH NO EXTRA OPTIONS. VARIANCES WILL OCCUR WHEN OTHER SELECTIONS ARE MADE
- <sup>2</sup> WATTAGE IS MEASURED WITH 4000K SELECTION @ 120vAC AND Tambient = 25C. WATTAGES MAY VARY WITH ALTERNATE CONFIGURATIONS
- <sup>3</sup> EFFICACY CALCULATED USING 4000K CCT DATA.
- <sup>4</sup> MAX AMBIENT TEMP RATING. TEMP RATING MAY VARY WITH ALTERNATE SPECIFIED DRIVERS OR ANY NON STANDARD SELECTION

## PHOTOMETRICS

### VL-LPC-X-40-4/LEDR840-UNV

Report No: 103047098CRT-004

Total Lumens: 13,521

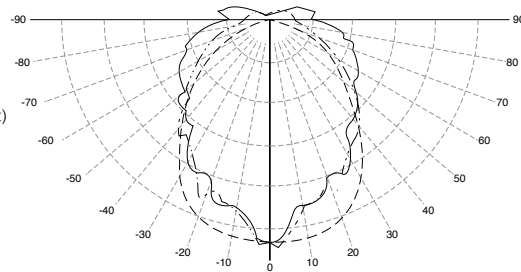
Wattage: 111.1

Efficacy: 121.7 (Lumens Per Watt)

Fixture Size: 4'

Key:

--- 0  
 - - - 45  
 ——— 90



### VL-C-X-40-4/LEDR840-UNV

Report No: 103047098CRT-003

Total Lumens: 14,285

Wattage: 111.7

Efficacy: 127.9 (Lumens Per Watt)

Fixture Size: 4'

Key:

--- 0  
 - - - 45  
 ——— 90

