

# Vandal Troffers: VL-S-LED

Vandal Resistant High Abuse 1x4, 2x2 and 2x4 LED Luminaires

- **Rigid, One piece inset door sits flush with housing.**
- **Provided with SS tamper resistant fasteners standard**
- **Combined lensing up to 3/8” thickness**
- **Robotically seam welded enclosure**
- **IP65 rated**
- **Suitable for use in public spaces**
- **0-10V 1% dimming standard**
- **B.A.A. & B.A.B.A Compliant & Made in the USA by a Family Owned US Corporation**



DISCLAIMER: Although KURTZON has prepared the information contained in this document with all due care, KURTZON does not warrant or represent that the information is free from errors or omission. While the information is considered to be true and correct at the date of publication, changes in circumstances after the time of publication may impact on the accuracy of the information. The information may change without notice and KURTZON is not in any way liable for the accuracy of any information printed and stored or in any way interpreted or used.

## ORDERING GUIDE

Series	Material	Size	Row Qty.	LED Type	CCT/CRI	Voltage	Optics LED Side / Room Side	Options										
VL-S						UNV												
Series	Material	Size	Light Source			Voltage	Optics LED Side / Room Side	Options										
			Row Qty.	LED Type	CCT/CRI													
VL-S	1 White CRS Hsg. & White CRS Door	1x4 1' x 4' Housing	1	LEDR	83 CRI:	UNV	Prismatic	SW Wet Location Hub Supplied (not installed)										
			2	LEDH	830 3000K		1 .125" P12 Prismatic Polycarbonate	PxL * Programmed to User Specified Lumen Value.										
	2 White CRS Hsg. & Polished 304 SS Door	2x2 2' x 2' Housing	2	LEDHF	835 3500K		2 .140" P12 High Impact Acrylic	PxW * Programmed to User Specified Wattage Value.										
					840 4000K		3 .156" P12 Polycarbonate	10KV 10KV Parallel Surge Protection (One Supplied Per Circuit)										
	3 Polished 304 SS Hsg. & Polished 304 SS Door	OR	3		850 5000K		4 .156" P73 Tempered Glass	GTD Generator Transfer Device										
					90+ CRI:		WHIP Must Specify Length and Wire Qty											
	4 White AL Hsg. & Polished 304 SS Door	2x4 2' x 4' Housing	4				Non-Prismatic											
							OCCMW Internal Microwave OCC Sensor											
	5 .125" Clear Flat Polycarbonate						FC Fuse & Holder (One Supplied Per Circuit)											
	6 .187" Clear Flat Polycarbonate						EM10 10W Integral LED EM (Specify Input Voltage)											
	7 .250" Clear Flat Polycarbonate						EM20 20W Remote LED EM (Specify Input Voltage)											
	WHT White Finished Door & HSG																	
	AMW Anti-Microbial White Powdercoat																	
	AH Allen Head SS Tamperproof Fasteners																	
	*Note: Specify Value in Ordering Notes Below																	
5 White AL Hsg. & White AL Door	2x4 2' x 4' Housing	4				* Select up to 1 layer of prismatic lensing												
6 White CRS Hsg. & White AL Door						4												
7 White AL Hsg. & White CRS Door										4								
NOTE: Additionally available in 95 + CRI with Seoul Sun-Like LEDS. Consult factory for more information.																		

Ordering Notes, If Applicable

NOTE: Additionally available in 95 + CRI with Seoul Sun-Like LEDs. Consult factory for more information.

\* Select up to 1 layer of prismatic lensing

\*Note: Specify Value in Ordering Notes Below

# Vandal Troffers: VL-S-LED

Vandal Resistant High Abuse 1x4, 2x2 and 2x4 LED Luminaires

## SPECIFICATIONS

**HOUSING:** One piece, hole free, robotically seam welded housing has flattened knockouts for a superior seal. Housings are available in .050" 3003 Aluminum, 20Ga 304 Stainless Steel, or 20Ga Cold Rolled Steel.

**DOOR FRAME:** One piece seam welded inset door frame regresses flush into the housing. Door frame is hinged by aircraft cables and secures to housing with captive stainless steel torx pan head screws. Available in .040" 3003 Powder coated Alum. , 20Ga 304 Polished SS, or 18Ga Powder coated Cold Rolled Steel.

**GASKETS:** Closed cell microcellular extruded KleanLock SealPro gasket with vulcanized corners making a one-piece oil and solvent resistant gasket system.

**OPTICS:** Select up to 2 layers of lensing up to a combined thickness of .375". Available in flat or prismatic polycarbonate, tempered glass, or high impact acrylic.

**LEDs:** Commercially available in a wide variety of Color Temperature (CCT), FLUX, and CRI. Highly efficient and consistent color maintained to 3 SDMC for color critical applications. B50/L70 and compliant with Zhaga recognized hole patterns. Consult factory for LED options or configurations not listed below.

**DRIVERS:** Standard Universal Voltage Class 2 drivers are 0-10v Dimmable to 1% for most LED configurations. They come with at least 2.5Kv surge protection, have less than 10% THD at max load, Ballast Factor Greater than .95 and are programmable to match specific lumen or wattage requirements. Drivers with higher input voltage ratings are available, consult factory for driver specifications.

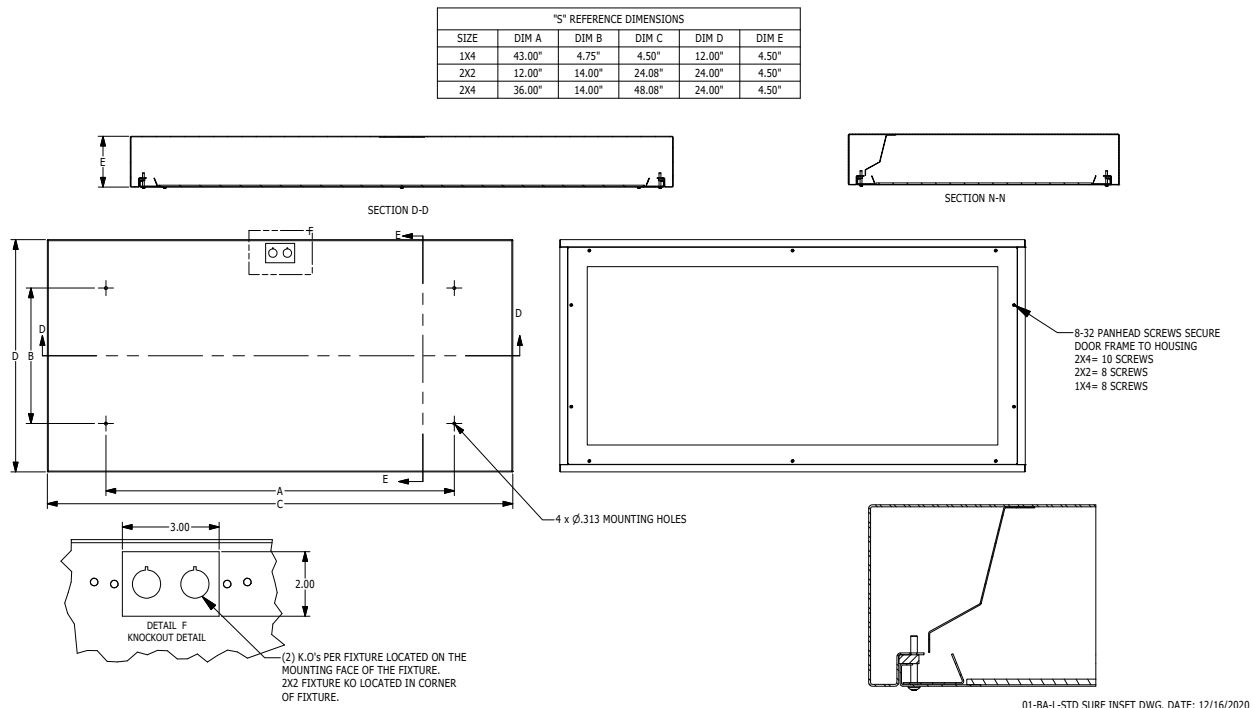
**REFLECTOR:** Die formed metal with high reflectance white polyester powder coat finish. Typical reflectivity 92%.

**INSTALLATION:** Four .312" dia. mounting holes and a removable gasketed wiring access plate with Supply entry via 1/2" trade size flattened knockouts. Optional mounting brackets available for pendant mounting. Suitable for surface installation onto covered ceilings only.

**FINISH:** Stainless steel door frames & housings are satin polished unless WHT or AMW options are selected. All other materials are provided with gloss high reflectance white polyester powder coat with 1000hr salt spray test per ASTM B117. AMW option provides a white anti-microbial polyester powder coat to all exposed surfaces.

**LISTINGS:** IP65 rated for dust and water ingress. Suitable for 1700 PSI high pressure hosedowns. ETL listed per UL\_1598 for wet locations. Drivers and LEDs are covered by a 5 year warranty, the remaining fixture is covered by a 10 year warranty. This product Series is both Build America Buy America (B.A.B.A.) & Buy American Act (B.A.A.) compliant.

## PRODUCT DRAWINGS



# Vandal Troffers: VL-S-LED

Vandal Resistant High Abuse 1x4, 2x2 and 2x4 LED Luminaires

## ENERGY DATA

POLY INSET-FGRS-LED TROFFER (APPROX <sup>1</sup> LUMENS DELIVERED)										
ENCLOSURE SIZE	LIGHT PACKAGE	80 CRI (3000K - 5000K)				90 CRI (3500K, 4000K)				STANDARD DIMMING
		LUMENS	WATTS <sup>2</sup>	EFFICACY <sup>3</sup>	MAX AMB TEMP	LUMENS	WATTS <sup>2</sup>	EFFICACY <sup>3</sup>	MAX AMB TEMP <sup>4</sup>	
1X4	1LED	2,731	29	94	45°C (113°F)	2,632	29	91	45°C (113°F)	0-10V 1%
1X4	2LED	5,460	55	99	45°C (113°F)	5,263	56	94	45°C (113°F)	0-10V 1%
1X4	2LEDH	10,579	109	97	35°C (95°F)	<b>10,103</b>	<b>109</b>	<b>93</b>	35°C (95°F)	0-10V 1%
1X4	2LEDHF	15,611	153	102	35°C (95°F)	13,009	183	71	35°C (95°F)	0-10V 1%
1X4	EM10	940-1020	4	NA	40°C (104°F)	710-940	4	NA	40°C (104°F)	NA
2X2	2LED	2,717	29	94	45°C (113°F)	2,622	29	90	45°C (113°F)	0-10V 1%
2X2	3LED	4,076	42	97	45°C (113°F)	3,932	42	94	45°C (113°F)	0-10V 1%
2X2	2LEDH	5,346	55	97	40°C (104°F)	5,097	55	93	40°C (104°F)	0-10V 1%
2X2	4LED	5,435	55	99	45°C (113°F)	5,243	56	94	45°C (113°F)	0-10V 1%
2X2	3LEDH	8,020	80	100	40°C (104°F)	<b>7,648</b>	<b>81</b>	<b>95</b>	35°C (95°F)	0-10V 1%
2X2	4LEDH	10,693	109	98	40°C (104°F)	10,194	109	94	35°C (95°F)	0-10V 1%
2X2	4LEDHF	16,244	153	106	35°C (95°F)	13,437	184	73	35°C (95°F)	0-10V 1%
2X2	EM10	940-1060	4	NA	40°C (104°F)	730-950	4	NA	40°C (104°F)	NA
2X4	2LED	5,912	55	107	45°C (113°F)	5,657	56	101	45°C (113°F)	0-10V 1%
2X4	3LED	8,868	83	107	45°C (113°F)	8,485	83	102	45°C (113°F)	0-10V 1%
2X4	2LEDH	11,670	109	107	40°C (104°F)	11,089	109	102	40°C (104°F)	0-10V 1%
2X4	4LED	11,824	111	107	45°C (113°F)	11,313	113	100	45°C (113°F)	0-10V 1%
2X4	3LEDH	17,505	164	107	40°C (104°F)	16,634	164	101	40°C (104°F)	0-10V 1%
2X4	4LEDH	23,339	220	106	40°C (104°F)	<b>22,178</b>	<b>220</b>	<b>101</b>	40°C (104°F)	0-10V 1%
2X4	4LEDHF	35,851	305	118	35°C (95°F)	31,103	373	83	35°C (95°F)	0-10V 1%
2X4	EM10	1060-1180	4	NA	40°C (104°F)	830-1020	4	NA	40°C (104°F)	NA

<sup>1</sup> DELIVERED LUMEN DATA IS EXTRAPOLATED FROM MEASURED DATA @ 25°C WITH NO EXTRA OPTIONS. VARIANCES WILL OCCUR WHEN OPTIONS ARE CHOSEN

<sup>2</sup> WATTAGE IS MEASURED WITH 4000K SELECTION @ 120VAC AND Tambient = 25°C. WATTAGES MAY VARY WITH ALTERNATE CONFIGURATIONS

<sup>3</sup> EFFICACY CALCULATED USING 4000K CCT DATA.

<sup>4</sup> MAX AMBIENT TEMP RATING, NON-IC INSTALLATION. TEMP RATING MAY VARY WITH SPECIFIED DRIVERS OR ANY NON STANDARD SELECTION

<sup>5</sup> 90 MINUTE 10W EMERGENCY DRIVER; LUMENS CALCULATED BASED ON FIXTURE EFFICACY.

## PHOTOMETRICS

### P12 PRISMATIC OPTICS

Key:

