

Vandal Troffers: VL-R-LED

Vandal Resistant High Abuse 1x4, 2x2 and 2x4 LED Luminaires

- Rigid, One piece inset door sits flush with housing.
- Provided with SS tamper resistant fasteners standard
- Combined lensing up to 3/8" thickness
- Robotically seam welded enclosure
- IP65 rated
- Suitable for use in public spaces
- 0-10V 1% dimming standard
- B.A.A. Compliant & Made in the USA by a Family Owned US Corporation



Not all product variations listed on this page are DLC qualified. Visit <https://www.designlights.org/dlc> to confirm qualification.

DISCLAIMER: Although KURTZON has prepared the information contained in this document with all due care, KURTZON does not warrant or represent that the information is free from errors or omission. While the information is considered to be true and correct at the date of publication, changes in circumstances after the time of publication may impact on the accuracy of the information. The information may change without notice and KURTZON is not in any way liable for the accuracy of any information printed and stored or in any way interpreted or used.

ORDERING GUIDE

Series	Material	Size	Row Qty.	LED Type	CCT/CRI	Voltage	Optics LED Side / Room Side	Options	
VL-R						UNV			
Series	Material	Size	Light Source			Voltage	Optics LED Side / Room Side	Options	
			Row Qty.	LED Type	CCT/CRI				
VL-R	3 White 430 SS Hsg. & Polished 304 SS Door	1x4 1'x 4' Housing	1	LEDR	83 CRI:	UNV	Prismatic 1 .125" P12 Polycarbonate 2 .140" P12 High Impact Acrylic 3 .156" P12 Polycarbonate 4 .156" P73 Tempered Glass Non-Prismatic 5 .125" Clear Flat Polycarbonate 6 .187" Clear Flat Polycarbonate 7 .250" Clear Flat Polycarbonate	SW Wet Location Hub Supplied (not installed) PxL* Programmed to User Specified Lumen Value. PxW* Programmed to User Specified Wattage Value. 10KV 10KV Parallel Surge Protection (One Supplied Per Circuit) GTD Generator Transfer Device WHIP Must Specify Length and Wire Qty OCCMW Internal microwave OCC Sensor FC Fuse & Holder (One Supplied Per Circuit) EM10** 10W Integral LED EM (Specify Input Voltage) EM20 20W Remote LED EM (Specify Input Voltage) GG 1/8" Thick Grid Gasket (Provided Loose) WHT White Finished Door & HSG AMW Anti-Microbial White Powdercoat AH Allen Head SS Tamperproof Fasteners	
			2	LEDH	830 3000K				
	4 White AL Hsg. & Polished 304 SS Door	2x2 2'x 2' Housing	2	3	LEDHF				835 3500K
					840 4000K				
	5 White AL Hsg. & White AL Door	OR	2x4 2'x 4' Housing	4					850 5000K
									90+ CRI:
	7 White AL Hsg. & White CRS Door								935 3500K
940 4000K									
950 5000K									
Note: Additionally available in 95+ CRI with Seoul Sun-Like LEDs. Consult factory for more information.									

Ordering Notes, If Applicable

Vandal Troffers: VL-R-LED

Vandal Resistant High Abuse 1x4, 2x2 and 2x4 LED Luminaires

SPECIFICATIONS

HOUSING: One piece, hole free, robotically seam welded housing has flattened knockouts for a superior seal. Housings are available in .040" 3003 Aluminum or 20Ga 430 Stainless Steel.

DOOR FRAME: One piece seam welded inset door frame regresses flush into the housing. Door frame is hinged by aircraft cables and secures to housing with captive stainless steel torx pan head screws. Available in .040" 3003 Powder coated Alum. , 20Ga 304 Polished SS, or 18Ga Powder coated Cold Rolled Steel.

GASKETS: Closed cell microcellular extruded KleanLock SealPro gasket with vulcanized corners making a one-piece oil and solvent resistant gasket system. GG option provides a loose 1/8" thick adhesive backed gasket intended to adhere to the top face of a suspended grid ceiling for grid profiles that do not already have gasket on them.

OPTICS: Select up to 2 layers of lensing up to a combined thickness of .375". Available in flat or prismatic polycarbonate, tempered glass, or high impact acrylic.

LEDS: Commercially available in a wide variety of Color Temperature (CCT), FLUX, and CRI. Highly efficient and consistent color maintained to 3 SDMC for color critical applications. B50/L70 and compliant with Zhaga recognized hole patterns. Consult factory for LED options or configurations not listed below.

DRIVERS: Standard Universal Voltage Class 2 drivers are 0-10v Dimmable to 1% for most LED configurations. They come with at least 2.5Kv surge protection, have less than 10% THD at max load, Ballast Factor Greater than .95 and are programmable to match specific lumen or wattage requirements. Drivers with higher input voltage ratings are available, consult factory for driver specifications.

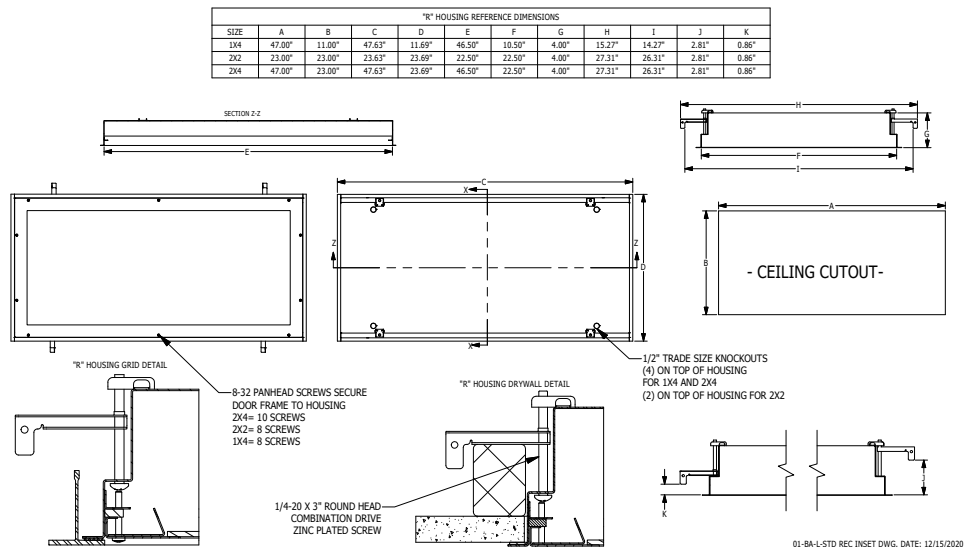
REFLECTOR: Die formed metal with high reflectance white polyester powder coat finish. Typical reflectivity 92%.

INSTALLATION: Suitable for recessed Non-IC installation into covered ceilings. Fixtures are supplied with .875" flattened knockouts for supply entry. Recessed housings have (4) swing out toggle arms that are used to draw the fixture in to the ceiling for hard lid installation without the need for a yoke hanger. The toggle arm adjuster bolts are accessible from the room side of the luminaire and the actual toggles can be used as means of establishing a seismic support for lay in ceiling installations. Confirm ceiling compatibility with dimension drawings below.

FINISH: Stainless steel door frames are satin polished unless WHT or AMW options are selected. All other materials are provided with gloss high reflectance white polyester powdercoat with 1000hr salt spray test per ASTM B117. AMW option provides a white anti-microbial polyester powder coat to all exposed surfaces.

LISTINGS: IP65 rated for dust and water ingress. Suitable for 1700 PSI high pressure hosedowns. ETL listed per UL_1598 for wet locations. Chicago Plenum Rated. Drivers and LEDs are covered by a 5 year warranty, the remaining fixture is covered by a 10 year warranty. This product is Buy American Act (B.A.A.) compliant.

PRODUCT DRAWINGS



Vandal Troffers: VL-R-LED

Vandal Resistant High Abuse 1x4, 2x2 and 2x4 LED Luminaires

ENERGY DATA

POLY INSET-FGRS-LED TROFFER (APPROX ¹ LUMENS DELIVERED)										
ENCLOSURE SIZE	LIGHT PACKAGE	80 CRI (3000K - 5000K)				90 CRI (3500K, 4000K)				STANDARD DIMMING
		LUMENS	WATTS ²	EFFICACY ³	MAX AMB TEMP	LUMENS	WATTS ²	EFFICACY ³	MAX AMB TEMP ⁴	
1X4	1LEDR	2,731	29	94	45°C (113°F)	2,632	29	91	45°C (113°F)	0-10V 1%
1X4	2LEDR	5,460	55	99	45°C (113°F)	5,263	56	94	45°C (113°F)	0-10V 1%
1X4	2LEDH	10,579	109	97	35°C (95°F)	10,103	109	93	35°C (95°F)	0-10V 1%
1X4	2LEDHF	15,611	153	102	35°C (95°F)	13,009	183	71	35°C (95°F)	0-10V 1%
1X4	EM10	940-1020	4	NA	40°C (104°F)	710-940	4	NA	40°C (104°F)	NA
2X2	2LEDR	2,717	29	94	45°C (113°F)	2,622	29	90	45°C (113°F)	0-10V 1%
2X2	3LEDR	4,076	42	97	45°C (113°F)	3,932	42	94	45°C (113°F)	0-10V 1%
2X2	2LEDH	5,346	55	97	40°C (104°F)	5,097	55	93	40°C (104°F)	0-10V 1%
2X2	4LEDR	5,435	55	99	45°C (113°F)	5,243	56	94	45°C (113°F)	0-10V 1%
2X2	3LEDH	8,020	80	100	40°C (104°F)	7,648	81	95	35°C (95°F)	0-10V 1%
2X2	4LEDH	10,693	109	98	40°C (104°F)	10,194	109	94	35°C (95°F)	0-10V 1%
2X2	4LEDHF	16,244	153	106	35°C (95°F)	13,437	184	73	35°C (95°F)	0-10V 1%
2X2	EM10	940-1060	4	NA	40°C (104°F)	730-950	4	NA	40°C (104°F)	NA
2X4	2LEDR	5,912	55	107	45°C (113°F)	5,657	56	101	45°C (113°F)	0-10V 1%
2X4	3LEDR	8,868	83	107	45°C (113°F)	8,485	83	102	45°C (113°F)	0-10V 1%
2X4	2LEDH	11,670	109	107	40°C (104°F)	11,089	109	102	40°C (104°F)	0-10V 1%
2X4	4LEDR	11,824	111	107	45°C (113°F)	11,313	113	100	45°C (113°F)	0-10V 1%
2X4	3LEDH	17,505	164	107	40°C (104°F)	16,634	164	101	40°C (104°F)	0-10V 1%
2X4	4LEDH	23,339	220	106	40°C (104°F)	22,178	220	101	40°C (104°F)	0-10V 1%
2X4	4LEDHF	35,851	305	118	35°C (95°F)	31,103	373	83	35°C (95°F)	0-10V 1%
2X4	EM10	1060-1180	4	NA	40°C (104°F)	830-1020	4	NA	40°C (104°F)	NA

- ¹ DELIVERED LUMEN DATA IS EXTRAPOLATED FROM MEASURED DATA @ 25C WITH NO EXTRA OPTIONS. VARIANCES WILL OCCUR WHEN OPTIONS ARE CHOSEN
- ² WATTAGE IS MEASURED WITH 4000K SELECTION @ 120vAC AND Tambient = 25C. WATTAGES MAY VARY WITH ALTERNATE CONFIGURATIONS
- ³ EFFICACY CALCULATED USING 4000K CCT DATA.
- ⁴ MAX AMBIENT TEMP RATING, NON-IC INSTALLATION. TEMP RATING MAY VARY WITH SPECIFIED DRIVERS OR ANY NON STANDARD SELECTION
- ⁵ 90 MINUTE 10W EMERGENCY DRIVER; LUMENS CALCULATED BASED ON FIXTURE EFFICACY.

PHOTOMETRICS

P12 PRISMATIC OPTICS

Key:

