

Vandal A Profile Wrap

Vandal Resistant Sealed 4' Linear Fluorescent Surface A-Profile Wrap

- **For Public Spaces**
- **IP65 Rated**
- **Polycarbonate lensing standard**
- **Several mounting options**
- **Tamperproof fasteners standard**



DISCLAIMER: Although KURTZON has prepared the information contained in this document with all due care, KURTZON does not warrant or represent that the information is free from errors or omission. While the information is considered to be true and correct at the date of publication, changes in circumstances after the time of publication may impact on the accuracy of the information. The information may change without notice and KURTZON is not in any way liable for the accuracy of any information printed and stored or in any way interpreted or used.

ORDERING GUIDE

Series	Lens Type	Material	Size	Lamps	Voltage	Options
VL						
VL	LPA: Clear Linear Prismatic Poly FPA: Frost Linear Prismatic Poly	1: White CRS Ext. & White CRS Int. 3: Polished 304 SS Ext. & 304 SS Int. 4: White Alum Ext. & White CRS Int.	20: 2' Housing 40: 4' Housing	1, or 2/T8: F32T8 1, or 2/T5: F28WT5 1/T5HO: F54WT5HO	120V 277V UNV 347V*	FC: Fuse & Holder (One Supplied Per Circuit) 2/EB: Two Ballasts (Two Circuits) EBL: -20F Electronic Ballast EBPRS: Program Rapid Start Ballast WHT: White Finished Stainless Steel SW: Conduit Hub, Ring & Plug (installed on endcaps) 1/EM: 1 Lamp EM (See Chart For Lamp Compatibility) 2/EM: 2 Lamp EM (See Chart For Lamp Compatibility) AH: Allen Head S.S Tamperproof Fasteners CRM: Continuous Row Mounting PMB: (2) Pendant Mount Brackets (Pendants or Chains by Others) CMB: (2) Corner Mount Brackets AMB: (2) Adjustable Mount Brackets 10KV: 10KV Parallel Surge Protection (One Supplied Per Circuit) GTD: Generator Transfer Device WHIP: Must Specify Length and Wire Qty OCCMW: Microwave Occupancy Sensor (inside fixture)

Vandal A Profile Wrap

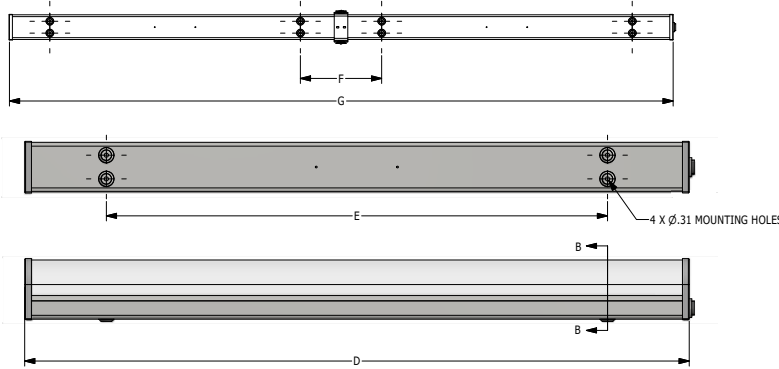
Vandal Resistant Sealed 4' Linear Fluorescent Surface A-Profile Wrap

SPECIFICATIONS

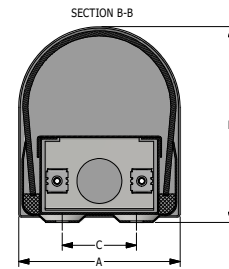
- HOUSING:** Double channel housing of 20Ga 1008 Cold Rolled Steel, 20Ga 304 Stainless Steel, or .040" 3003 Aluminum construction.
- END CAPS:** Precision stamped 20Ga 304 Stainless Steel end caps secured to housing with captive stainless steel Torx pan head screws. SW Option provides a sealed conduit hub installed on endcap.
- GASKETS:** Closed cell 100% pure neoprene gasketing. Resists aging, grease and solvents.
- LENS:** Extruded .125" thick linear prismatic polycarbonate lens available in clear or with a frosted overlay.
- LAMPS:** Suitable for most T8, T5, and T5HO lamps. (By others)
- ELECTRICAL:** Standard Class P Ballast - Electronic < 10% THD, high performance instant start universal voltage (120-277). See options for Rapid Start, Dimming, or Cold Temp Ballasts, Others available (must specify). Dual level switching available with 2/EB option.
- REFLECTOR:** Die formed metal with high reflectance white polyester powder coat finish. Typical reflectivity 92%.
- INSTALL SURFACE:** Suitable for wet locations under covered ceilings only. Four .312" debossed holes for surface mounting. One .875" (1/2" trade-size) flattened and knockout located on back of housing for wiring. See below for other mounting and supply entry options.
- ROWS:** Joiner bands provided for continuous row mounting (See Option: CRM). Please specify number of fixtures in each run.
- FINISH:** Steel Housings are Satin Polished unless option "WHT" is selected. All other housings are finished with gloss white high reflectance 1000hr saltspray polyester powdercoating.
- LISTINGS:** IP65 rated for dust and water ingress. UL listed per UL_1598 for wet locations. Electrical components covered under manufacturers warranty, the remaining fixture is covered by a 10 year warranty.

PRODUCT DRAWINGS

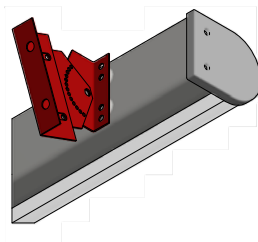
CRM INSTALLATION



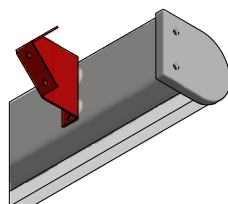
A PROFILE REFERENCE DIMENSIONS							
SIZE	DIM A	DIM B	DIM C	DIM D	DIM E	DIM F	DIM G
20	N/A	N/A	N/A	N/A	N/A	N/A	N/A
40	3.8"	4.6"	1.75"	49.2"	37.0"	12.0"	98.2



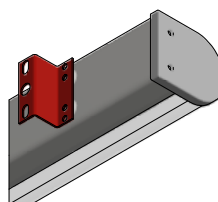
AMB OPTION



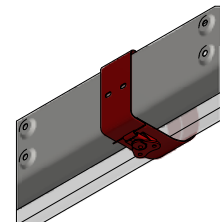
CMB OPTION



PMB OPTION



CRM JOINER BAND



05-AA-L-A PROFILE WRAP DWG DATE: 3/31/2017

Vandal A Profile Wrap

Vandal Resistant Sealed 4' Linear Fluorescent Surface A-Profile Wrap

ENERGY DATA

"A" PROFILE FLUORESCENT WRAP						
ENCLOSURE SIZE	LAMP TYPE	LAMP QTY ¹	(EBPRS) RAPID START	(2/EM) 2 LAMP EMERGENCY ²	(1/EM) 1 LAMP EMERGENCY ²	MAX AMBIENT TEMP ³
40	F32WT8	1 or 2	OPTIONAL	1460 Lm	700 Lm	40°C (104°F)
40	F28WT5	1 or 2	STANDARD	NA	1050 Lm	40°C (104°F)
40	F54WT5HO	1	STANDARD	NA	1150 Lm	40°C (104°F)

¹ LAMPS SUPPLIED BY OTHERS

² TOTAL GENERATED LUMENS (FROM STANDARD EMERGENCY BALLAST SPECIFICATION SHEET)

³ TEMP RATING MAY VARY WITH ALTERNATE SPECIFIED BALLASTS OR ANY NON STANDARD SELECTION