

Wet Location Vaportight: WL-SEG-1540-LED-QS

Wet Location 15" x 4' Linear Vaportight LED Luminaire for Surface or Pendant Mounting

- **IP65 / IP66 / IP67**
- **1500 PSI hosedown**
- **UL 1598 Wet Location**
- **Marine grade 316 stainless steel latches & Mounting brackets**
- **Nema4X**
- **UL 5VA Rated (will not melt or burn)**
- **Provided with clear Polycarbonate Lensing**
- **B.A.A. & B.A.B.A Compliant & Made in the USA by a Family Owned US Corporation**
- **5 Day Quick Ship For Orders Under 25 Fixtures**
- **3 Day Quick Ship For Orders Under 15 Fixtures**



DISCLAIMER: Although KURTZON has prepared the information contained in this document with all due care, KURTZON does not warrant or represent that the information is free from errors or omission. Whilst the information is considered to be true and correct at the date of publication, changes in circumstances after the time of publication may impact on the accuracy of the information. The information may change without notice and KURTZON is not in any way liable for the accuracy of any information printed and stored or in any way interpreted or used.

ORDERING GUIDE

Series	Lumen Package	CCT/CRI	Optics	Voltage	Controls	Mounting (Not Required)	Options	Quick Ship
WL-SEG-1540			CP	UNV	DIM1			

Series	Lumen Package	CCT/CRI	Optics	Voltage	Controls	Mounting (Not Required)	Options (Not Required)	Quick Ship				
WL-SEG-1540	2LO 2 Rows of Low Flux LED's	83 CRI: 3500K	CP Clear Polycarbonate	UNV (120-277 Vac)	DIM1 0-10V 1%	V-Hook Mounting Hooks	EM10 10W Integral LED EM (Specify Input Voltage)	5DQS (5-Day Quick Ship)				
	3LO 3 Rows of Low Flux LED's						PxL Programmed to User Specified Lumen Value	3DQS (3-Day Quick Ship)				
	4LO 4 Rows of Low Flux LED's						PxW Programmed to User Specified Lumen Value					
	6LO 6 Rows of Low Flux LED's	840 4000K					10KV 10KV Parallel Surge Protection (1 Supplied Per Circuit)					
	2HI 2 Rows of High Flux LED's											
	3HI 3 Rows of High Flux LED's											

Ordering Notes, If Applicable

Wet Location Vaportight: WL-SEG-1540-LED-QS

Wet Location 15" x 4' Linear Vaportight LED Luminaire for Surface or Pendant Mounting

SPECIFICATIONS

HOUSING: Injection molded, .125" thick Hole Free White Fiberglass body with sloped top Surface to prevent water accumulation. 5VA Flame Rating

OPTICS: Injection molded Heavy gauge Clear Polycarbonate. Secured by Captive Stainless Steel cables.

REFLECTOR: Standard (92%) High Reflectance white 22 gauge metal. Formed wiring cover for rigidity. Removable without tools or screws.

GASKETS: One piece urethane extruded foam with smooth surface.

LATCHES: Twelve (12) 316 Stainless Steel over-center latches secure lens to housing.

MOUNTING: Provided with (4) mounting brackets for suspending (cables by others). See mounting options for other configurations.

LEDs: Commercially available in a wide variety of Color Temperature (CCT), FLUX, and CRI. Highly efficient and consistent color maintained to 3 SDMC for color critical applications. B50/L70 and compliant with Zhaga recognized hole patterns. Consult factory for LED options or configurations not listed below.

DRIVERS: Standard Universal Voltage Class 2 drivers are 0-10v Dimmable to 1% for most LED configurations. They come with at least 2.5Kv surge protection, have less than 10% THD at max load, Ballast Factor Greater than .95 and are programmable to match specific lumen or wattage requirements. Drivers with higher input voltage ratings are available, consult factory for driver specifications.

INSTALLATION: Suitable for surface or suspended installation onto or under covered ceilings. Two sealed 1/2" trade size conduit entry points located at ends. See options for pre-wired whips or cords.

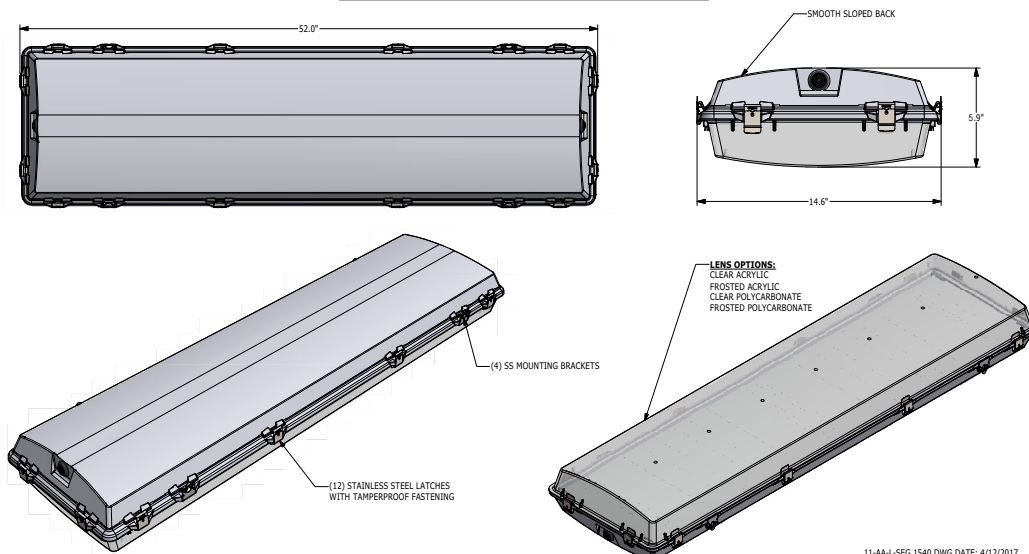
LISTINGS: IP67 rated for dust and water ingress. Suitable for 1500 PSI high pressure hosedowns. UL listed per UL_1598 for wet locations. Nema 4x rated. Drivers and LEDs are covered by a 5 year warranty, the remaining fixture is covered by a 10 year warranty. This product Series is both Build America Buy America (B.A.B.A.) & Buy American Act (B.A.A.) compliant.

5-DAY QUICK SHIP POLICY: Quantity restriction of 25 fixtures. Once PO is received by 12:00 PM CST, shipping will occur within 5 business days. Standard freight applies. Expedited shipping to be paid by customer.

3-DAY QUICK SHIP POLICY: Quantity restriction of 15 fixtures. Once PO is received by 12:00 PM CST, shipping will occur within 3 business days. Standard freight applies. Expedited shipping to be paid by customer.

PRODUCT DRAWINGS

SEG 1540 REFERENCE DIMENSIONS



11-AA-L-SEG 1540 DWG DATE: 4/12/2017

Wet Location Vaportight: WL-SEG-1540-LED-QS

Wet Location 15" x 4' Linear Vaportight LED Luminaire for Surface or Pendant Mounting

ENERGY DATA

STD SEG 1540 (APROX ¹ DELIVERED LUMENS)								
ENCLOSURE SIZE	LED PACKAGE	CRI	DIMMING SELECTION	CLEAR LENS			AMBIENT TEMP	
				LUMENS ¹	WATTS ²	EFFICACY ³ (Lm/W)	MINIMUM	MAXIMUM ⁴
1540	2 LO	83	0-10V 1%	7,625	55	139	-20°C (-4°F)	40°C (104°F)
1540	3 LO	83	0-10V 1%	11,430	82	139	-20°C (-4°F)	40°C (104°F)
1540	4 LO	83	0-10V 1%	15,250	110	139	-20°C (-4°F)	40°C (104°F)
1540	6 LO	83	0-10V 1%	22,875	164	139	-20°C (-4°F)	35°C (95°F)
1540	2 HI	83	0-10V 1%	20,590	153	135	-20°C (-4°F)	35°C (95°F)
1540	3 HI	83	0-10V 1%	30,890	229	135	-20°C (-4°F)	35°C (95°F)
1540	EM10 ⁵	NA	NA	1100-1390	4	NA	0°C (32°F)	35°C (95°F)

¹ DELIVERED LUMEN DATA IS EXTRAPOLATED FROM MEASURED DATA @25C WITH NO EXTRA OPTIONS. VARIANCES WILL OCCUR WHEN OPTIONS ARE CHOSEN

² WATTAGE IS MEASURED WITH 4000K SELECTION @ 120vAC AND Tambient = 25C. WATTAGES MAY VARY WITH ALTERNATE CONFIGURATIONS

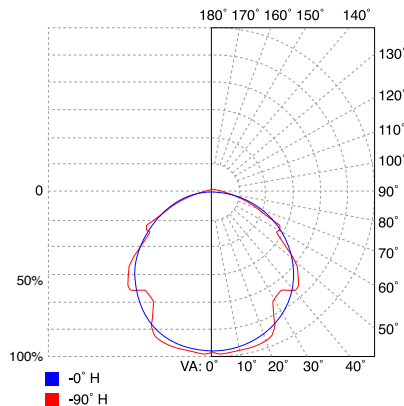
³ EFFICACY CALCULATED USING 4000K CCT DATA.

⁴ TEMP RATING MAY VARY WITH SPECIFIED DRIVERS OR ANY NON STANDARD SELECTION

⁵ 90 MINUTE 10W EMERGENCY DRIVER; LUMENS CALCULATED BASED ON FIXTURE EFFICACY. (EX: 10W x 100Lm/W = 1000Lm Delivered)

PHOTOMETRICS

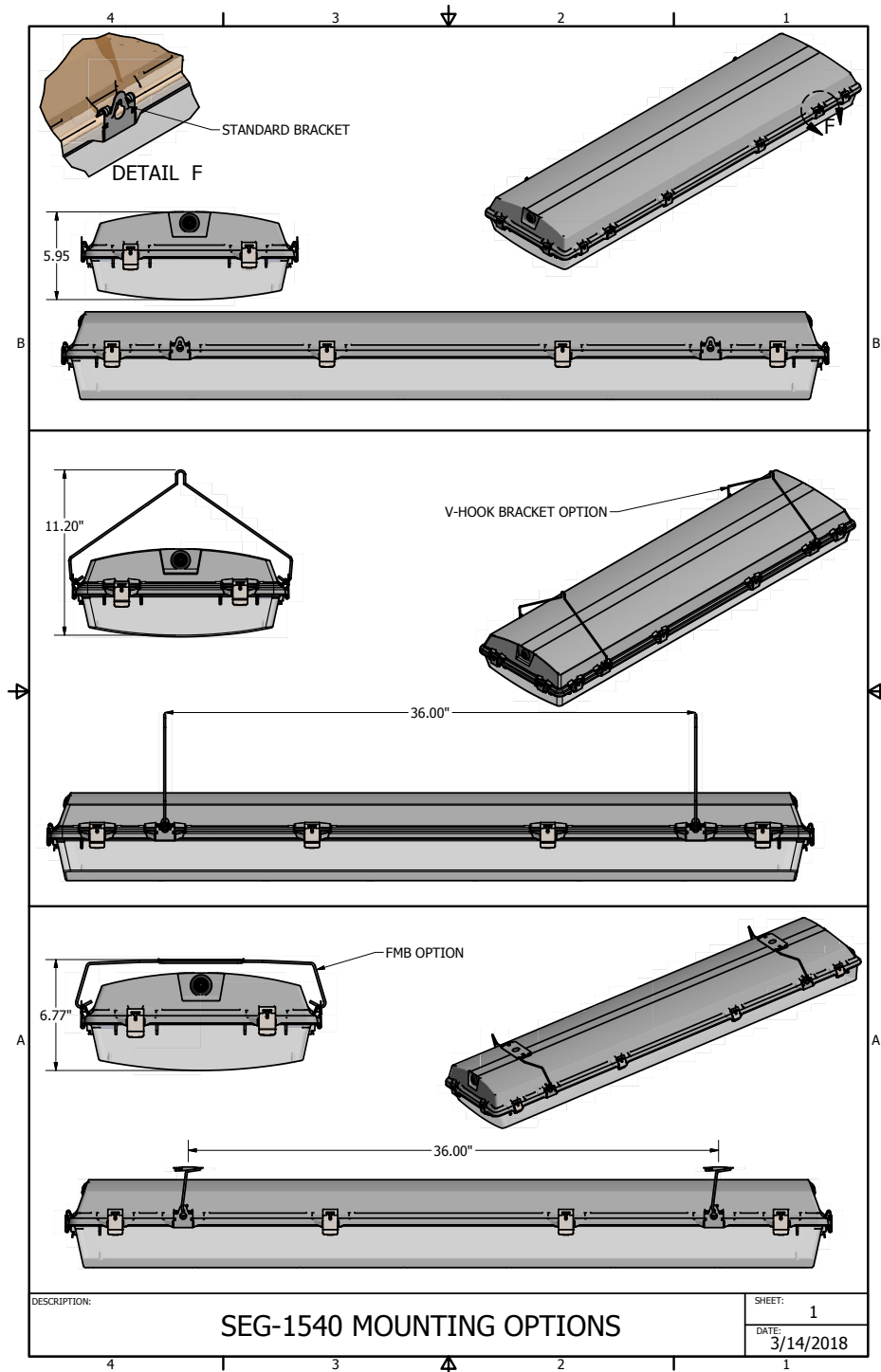
SEG 1540 CP



Wet Location Vaportight: WL-SEG-1540-LED-QS

Wet Location 15" x 4' Linear Vaportight LED Luminaire for Surface or Pendant Mounting

MOUNTING OPTIONS



Wet Location Vaportight: WL-SEG-1540-LED-QS

Wet Location 15" x 4' Linear Vaportight LED Luminaire for Surface or Pendant Mounting

MOUNTING OPTIONS

