

Wet Location Troffers: WL-R-LED-5DQS

High Efficiency LED Recessed Luminaires for Wet Locations



- **Rated IP55**
- **ETL Listed for Wet Locations**
- **Channel Inset Door Frame**
- **0-10V 1% dimming comes standard**
- **Recessed Housing suitable for Tbar Grid & Hardlid installations**
- **BAA Compliant & Made in the USA by a Family Owned US Corporation**
- **5 Day Quick Ship For Orders Under 25 Fixtures**



DISCLAIMER: Although KURTZON has prepared the information contained in this document with all due care, KURTZON does not warrant or represent that the information is free from errors or omission. While the information is considered to be true and correct at the date of publication, changes in circumstances after the time of publication may impact on the accuracy of the information. The information may change without notice and KURTZON is not in any way liable for the accuracy of any information printed and stored or in any way interpreted or used.

ORDERING GUIDE

Series	Material	Size	Row Qty.	LED Type	CCT/CRI	Voltage	Options	Quick Ship
WL-R				LEDR				5DQS

Series	Material	Size	Light Source			Voltage	Options		Quick Ship
			Row Qty.	LED Type	CCT/CRI				
WL-R	3	White 430 SS Hsg. & Polished 304 SS Door	2x2 2' x 2' Housing	2	LEDR	83 CRI:	120V	EM10 10W Integral LED EM (Specify Input Voltage)	5DQS (5-Day Quick Ship)
			OR	3		835 3500K	277V	EM20 20W Integral LED EM (Specify Input Voltage)	
	4	White AL Hsg. & Polished 304 SS Door	2x4 2' x 4' Housing	4		840 4000K	UNV	PxL Programmed to User Specified Lumen Value	
								PxW Programmed to User Specified Lumen Value	
	5	White AL Hsg. & White AL Door						10KV 10KV Parallel Surge Protection (1 Supplied Per Circuit)	
								GG 1/8" Thick Grid Gasket (Provided Loose)	

Ordering Notes, If Applicable

Wet Location Troffers: WL-R-LED-5DQS

High Efficiency LED Recessed Luminaires for Wet Locations

SPECIFICATIONS

HOUSING: One piece, hole free, robotically seam welded housing has flattened knockouts for a superior seal. Housings are available in .040" 3003 Aluminum or 20Ga 430 Stainless Steel.

DOOR FRAME: Inset door frame made from welded channels regresses into the housing to allow the neoprene gasket to seal to the housing. Door frame is hinged by aircraft cables and secures to housing with captive stainless steel pan head screws. Available in .040" 3003 Powder coated Alum., 20Ga 304 Polished SS.

GASKETS: Closed cell 100% pure neoprene gasket with vulcanized corners making a one-piece oil and solvent resistant gasket system. GG option provides a loose 1/8" thick adhesive backed gasket intended to adhere to the top face of a suspended grid ceiling for grid profiles that do not already have gasket on them.

OPTICS: Standard P12 prismatic acrylic lens is provided with an inverted lens so the smooth side faces the room for easy cleaning. Other optics may be available, consult factory for more information or options not listed.

LEDS: Commercially available in a wide variety of Color Temperature (CCT), FLUX, and CRI. Highly efficient and consistent color maintained to 3 SDMC for color critical applications. B50/L70 and compliant with Zhaga recognized hole patterns. Consult factory for LED options or configurations not listed below.

DRIVERS: Standard Universal Voltage Class 2 drivers are 0-10v Dimmable to 1%. They come with at least 2.5Kv surge protection, have less than 10% THD at max load, Ballast Factor Greater than .95 and are programmable to match specific lumen or wattage requirements. Drivers with higher input voltage ratings are available, consult factory for driver specifications.

REFLECTOR: Die formed metal with high reflectance white polyester powder coat finish. Typical reflectivity 92%.

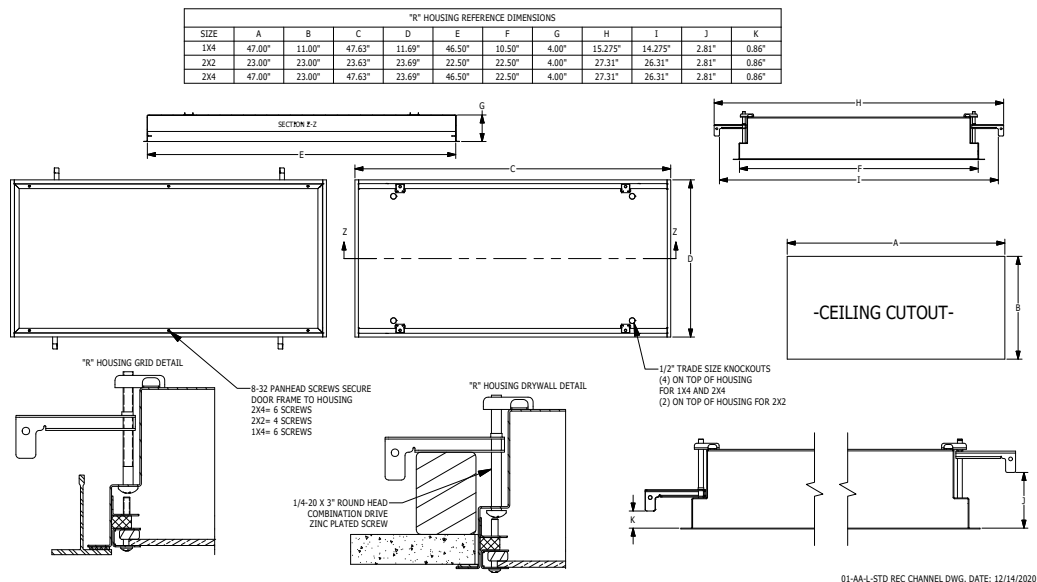
INSTALLATION: Suitable for recessed Non-IC installation into covered ceilings. Fixtures are supplied with .875" flattened knockouts for supply entry. Recessed housings have (4) swing out toggle arms that are used to draw the fixture in to the ceiling for hard lid installation without the need for a yoke hanger. The toggle arm adjuster bolts are accessible from the room side of the luminaire and the actual toggles can be used as means of establishing a seismic support for lay in ceiling installations. Confirm ceiling compatibility with dimension drawings below.

FINISH: Stainless steel door frames are satin polished. All other materials are provided with gloss high reflectance white polyester powdercoat with 1000hr salt spray test per ASTM B117.

LISTINGS: IP55 rated for dust and water ingress. ETL listed per UL_1598 for wet locations. Chicago Plenum Rated. Drivers and LEDs are covered by a 5 year warranty, the remaining fixture is covered by a 10 year warranty. This product is Buy American Act (B.A.A.) compliant.

5-DAY QUICK SHIP POLICY: Quantity restriction of 25 fixtures. Once PO is received by 12:00 PM CST, shipping will occur within 5 business days. Standard freight applies. Expedited shipping to be paid by customer.

PRODUCT DRAWINGS



Wet Location Troffers: WL-R-LED-5DQS

High Efficiency LED Recessed Luminaires for Wet Locations

ENERGY DATA

SURFACE & RECESSED CHANNEL LED TROFFER (APPROX ¹ LUMENS DELIVERED)										
ENCLOSURE SIZE	LIGHT PACKAGE	80 CRI (3000K - 5000K)				90 CRI (3500K, 4000K)				STANDARD DIMMING
		LUMENS	WATTS ²	EFFICACY ³	MAX AMB TEMP	LUMENS	WATTS ²	EFFICACY ³	MAX AMB TEMP ⁴	
2X2	2LED	3,260	29	112	45°C (113°F)	3,270	29	113	45°C (113°F)	0-10V 1%
2X2	3LED	4,887	42	116	45°C (113°F)	4,902	42	117	45°C (113°F)	0-10V 1%
2X2	4LED	6,510	55	118	45°C (113°F)	6,530	55	119	45°C (113°F)	0-10V 1%
2X2	EM10	1120-1230	4	NA	40°C (104°F)	910-1190	4	NA	40°C (104°F)	NA
2X4	2LED	6,942	55	126	45°C (113°F)	6,640	56	119	45°C (113°F)	0-10V 1%
2X4	3LED	10,412	83	125	45°C (113°F)	9,954	83	120	45°C (113°F)	0-10V 1%
2X4	4LED	13,880	111	125	45°C (113°F)	13,270	113	117	45°C (113°F)	0-10V 1%
2X4	EM10	1240-1330	4	NA	40°C (104°F)	960-1200	4	NA	40°C (104°F)	NA

¹ DELIVERED LUMEN DATA IS EXTRAPOLATED FROM MEASURED DATA @25°C WITH NO EXTRA OPTIONS. VARIANCES WILL OCCUR WHEN OPTIONS ARE CHOSEN

² WATTAGE IS MEASURED WITH 4000K SELECTION @ 120VAC AND Tambient = 25°C. WATTAGES MAY VARY WITH ALTERNATE CONFIGURATIONS

³ EFFICACY CALCULATED USING 4000K CCT DATA.

⁴ MAX AMBIENT TEMP RATING, NON-IC INSTALLATION. TEMP RATING MAY VARY WITH SPECIFIED DRIVERS OR ANY NON-STANDARD SELECTION

⁵ 90 MINUTE 10W EMERGENCY DRIVER; LUMENS CALCULATED BASED ON FIXTURE EFFICACY.

PHOTOMETRICS

P12 PRISMATIC

Key:

