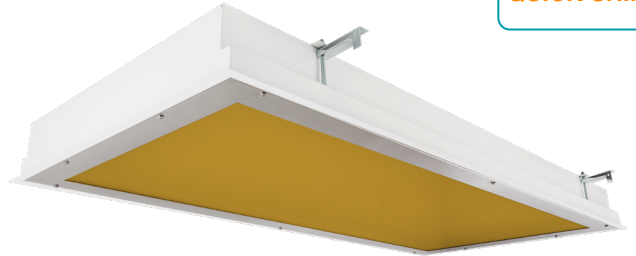


# Cleanroom TL Amber Troffers - 5 Day Quick Ship

2x2 and 2x4 Amber/White LED Luminaires

- **IP65 Rated**
- **ETL listed for Wet Locations**
- **Suitable for ISO 3-9 Cleanspaces**
- **Suitable for 209E class 100-100,000 Cleanspaces**
- **Recessed Housing suitable for Tbar Grid AND Hardlid Installations**
- **One piece Inset Doorframe**
- **Robotically seam welded housing**
- **0-10v 1% Dimming Standard for most configurations**
- **Narrow Spectrum 590nm True Amber LEDs**
- **Available With White / Amber LED Switching**
- **Made in the USA by a Family Owned US Corporation**
- **5 Day Quick Ship For Orders Under 25 Fixtures**



DISCLAIMER: Although KURTZON has prepared the information contained in this document with all due care, KURTZON does not warrant or represent that the information is free from errors or omission. While the information is considered to be true and correct at the date of publication, changes in circumstances after the time of publication may impact on the accuracy of the information. The information may change without notice and KURTZON is not in any way liable for the accuracy of any information printed and stored or in any way interpreted or used.

## ORDERING GUIDE

Series	Installation Type	Material	Size	Amber LED	White LED	CCT (White LED)	Voltage	Options	Quick Ship
<b>TL</b>	<b>R</b>								<b>5DQS</b>
Series	Installation Type	Material	Size	Amber LED	White LED	CCT (White LED)	Voltage	Options	Quick Ship
TL	R: Recessed	3: White 430 SS Hsg. & Polished 304 SS Door 4: White AL Hsg. & Polished 304 SS Door 5: White AL Hsg. & White AL Door 7: White AL Hsg. & White CRS Door	2x2: 2' x 2' Housing <b>MAX 4 Arrays Total</b> OR 2x4: 2' x 4' Housing <b>MAX 4 Arrays Total</b>	1/YLED590 2/YLED590 3/YLED590 4/YLED590	1/LEDR 2/LEDR 3/LEDR	83 CRI: 835 = 3500K CCT 840 = 4000K CCT	120V 277V UNV	EM10: 10W Integral LED EM (Specify Input Voltage) EM20: 20W Remote LED EM (Specify Input Voltage) 10KV: 10KV Parallel Surge Protection (One Supplied Per Circuit)	5DQS: (5-Day Quick Ship)

# Cleanroom TL Amber Troffers - 5 Day Quick Ship

2x2 and 2x4 Amber/White LED Luminaires

## SPECIFICATIONS

**HOUSING:** One piece, hole free, robotically seam welded housing has flattened knockouts for a superior seal. Recessed housings are available in .040" 3003 Aluminum or 20Ga 430 Stainless Steel.

**DOOR FRAME:** One piece inset door frame with seam welds regressing into housing to allowing the NSF approved microcellular gasket to seal to the housing. Door frame is hinged by aircraft cables and secures to housing with captive stainless steel pan head screws. Available in .040" 3003 Powder coated Alum. , 20Ga 304 Polished SS, or 18Ga 1008 Powder coated CRS.

**GASKETS:** NSF Listed closed cell microcellular extruded KleanLock SealPro gasket with vulcanized corners making a one-piece oil and solvent resistant gasket system.

**LENS:** Impact resistant .135" thick virgin acrylic with P12 prismatic pattern inverted. Sealed to door with NSF listed RTV silicone. See "Options" for other choices.

**LEDS:** Fixture available with Amber only or Amber & White LED's, each color will be supplied with its own driver for dual switching. Amber LED's provide a narrow 590nm spectrum for wavelength sensitive applications. White high efficiency LEDs are commercially available & in a wide variety of CRI and CCT. All boards have zhaga recognized hole patterns and come with a 5 year warranty.

**DRIVERS:** Standard Universal Voltage Class 2 drivers are 0-10v Dimmable to 1% for most LED configurations. They come with at least 2.5Kv surge protection, have less than 10% THD at max load, Ballast Factor Greater than .95 and are programmable to match specific lumen or wattage requirements. Drivers with higher input voltage ratings are available, consult factory for driver specifications. (each color LED comes standard with its own driver)

**REFLECTOR:** Die formed metal with high reflectance white polyester powder coat finish. Typical reflectivity 92%.

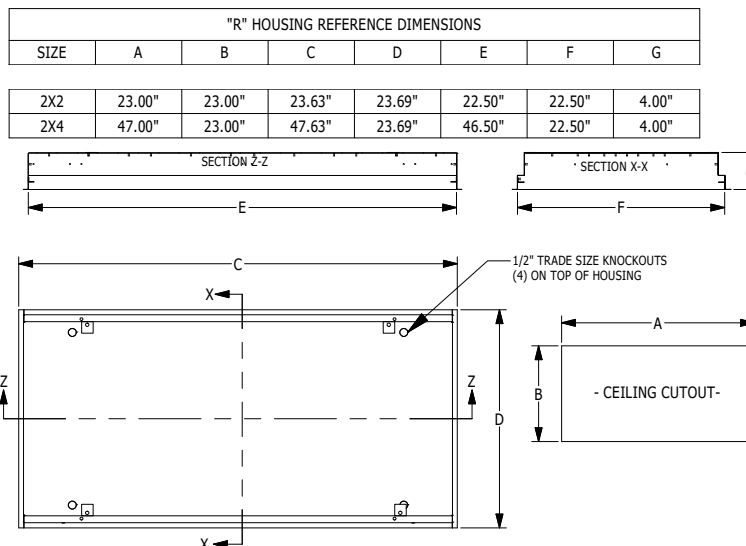
**INSTALL RECESSED:** One fixture suitable for Grid and Flanged installation. Accommodates 1" and 1.5" T-Bar Grid (Consult factory for 2" T-Bar Grid compatibility). Four adjustable toggle arms with holes for seismic support wire attachment. Supply entry via 1/2" trade size flattened knockouts.

**FINISH:** Gloss white high reflectance 1000 hr. salt spray polyester powder coat finish standard for all recessed housings. Stainless steel doorframes and surface housings are satin polished unless option WHT is chosen.

**LISTINGS:** IP65 rated for dust and water ingress. Suitable for 1700 PSI high pressure hosedowns. ETL listed per UL\_1598 for wet locations. Chicago Plenum Rated. Certified ISO-14644-1 for class 3 through class 9 cleanspaces. Certified Fed Std 209E for Class 100 through Class 100,000 cleanspaces. Drivers and LEDs are covered by a 5 year warranty, the remaining fixture is covered by a 10 year warranty.

**5-DAY QUICK SHIP POLICY:** Quantity restriction of 25 fixtures. Once PO is received by 12:00 PM CST, shipping will occur within 5 business days. Standard freight applies. Expedited shipping to be paid by customer.

## PRODUCT DRAWINGS



# Cleanroom TL Amber Troffers - 5 Day Quick Ship

2x2 and 2x4 Amber/White LED Luminaires

## ENERGY DATA

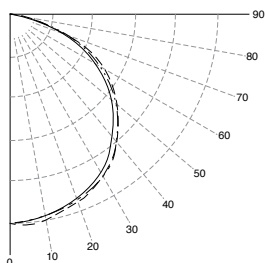
INSET-FGRS-AMBER LED TROFFER													
ENCLOSURE SIZE	LED SELECTION	DIMMING	83 CRI			590nm (Amber)			AMBIENT TEMP RATING				
			LUMENS	WATTS	EFFICACY	LUMENS	WATTS	EFFICACY	MINIMUM	MAXIMUM <sup>3</sup>			
2x2	1LEDR	0-10V 1%	2,090	19	110	NA			-20°C (-4°F)	40°C (104°F)			
2x2	2LEDR	0-10V 1%	4,190	37.4	112				-20°C (-4°F)	40°C (104°F)			
2x2	3LEDR	0-10V 1%	6,290	55.2	114				-20°C (-4°F)	40°C (104°F)			
2X2	1YLED	0-10V 1%	NA						1,066	22	48	-20°C (-4°F)	40°C (104°F)
2X2	2YLED	0-10V 1%							2,132	43	50	-20°C (-4°F)	40°C (104°F)
2X2	3YLED	0-10V 1%							3,197	65	49	-20°C (-4°F)	40°C (104°F)
2X2	4YLED	0-10V 1%							<b>4,263</b>	86	50	-20°C (-4°F)	40°C (104°F)
2X4	1LEDR	0-10V 1%	4520	38	119	NA			-20°C (-4°F)	40°C (104°F)			
2X4	2LEDR	0-10V 1%	9,040	74	122				-20°C (-4°F)	40°C (104°F)			
2X4	3LEDR	0-10V 1%	13,560	111	122				-20°C (-4°F)	40°C (104°F)			
2X4	1YLED	0-10V 1%	NA						2,390	44	54	-20°C (-4°F)	40°C (104°F)
2X4	2YLED	0-10V 1%							4,779	87	55	-20°C (-4°F)	40°C (104°F)
2X4	3YLED	0-10V 1%							7,169	130	55	-20°C (-4°F)	40°C (104°F)
2X4	4YLED	0-10V 1%							<b>9,558</b>	173	55	-20°C (-4°F)	40°C (104°F)

<sup>1</sup> DELIVERED LUMEN DATA IS EXTRAPOLATED FROM MEASURED DATA @25C WITH NO EXTRA OPTIONS. VARIANCES WILL OCCUR WHEN OTHER SELECTIONS ARE MADE  
<sup>2</sup> WATTAGE IS MEASURED WITH LED 840 SELECTION @ 120VAC AND Tambient = 25C. WATTAGES WILL VARY AND INCREASE WHEN ALTERNATE OPTIONS ARE SELECTED  
<sup>3</sup> MAX AMBIENT TEMP RATING, NON-IC INSTALLATION. TEMP RATING IS WITH NO OTHER OPTIONS SELECTED. WHITE LEDS ONLY SUITABLE FOR 40C AMBIENT

## PHOTOMETRICS

### TL-R-2X2-4/YLED-590-UNV

Report No: 20613  
 Total Lumens: 4,263  
 Wattage: 85.53  
 Efficacy: 49.8 (Lumens Per Watt)  
 Fixture Size: 2'x2'  
 Key:  
 - - - - 0  
 - · - · - 45  
 - - - - 90



### TL-R-2X4-4/YLED-590-UNV

Report No: 20614  
 Total Lumens: 9,558  
 Wattage: 172.63  
 Efficacy: 55.4 (Lumens Per Watt)  
 Fixture Size: 2'x4'  
 Key:  
 - - - - 0  
 - · - · - 45  
 - - - - 90

