

# Medical MRI Operating Room Troffers: ML-MRIOR-LED - QS

2x4 Recessed Luminaires



- **For use in MRI Featured Advanced Surgical Suites**
- **IP65 Rating**
- **Non-Ferrous Construction**
- **One fixture suitable for Lay-in or Hard lid installations**
- **MIL-461 Compliant with purchase of filters**
- **B.A.A. & B.A.B.A Compliant & Made in the USA by a Family Owned US Corporation**
- **5 Day Quick Ship For Orders Under 25 Fixtures**
- **3 Day Quick Ship For Orders Under 15 Fixtures**



DISCLAIMER: Although KURTZON has prepared the information contained in this document with all due care, KURTZON does not warrant or represent that the information is free from errors or omission. While the information is considered to be true and correct at the date of publication, changes in circumstances after the time of publication may impact on the accuracy of the information. The information may change without notice and KURTZON is not in any way liable for the accuracy of any information printed and stored or in any way interpreted or used.



## ORDERING GUIDE

Series	Material	Size	Row Qty.	LED Type	CCT/CRI	Voltage	Mounting	Optics	Options	Quick Ship
<b>ML-MRIOR</b>	<b>5</b>	<b>2x4</b>		<b>LEDR</b>		<b>UNV</b>	<b>IND</b>	<b>SYM</b>		
Series	Material	Size	Light Source			Voltage	Mounting	Optics	Options	Quick Ship
			Row Qty.	LED Type	CCT/CRI					
ML-MRIOR	5 White Alum Hsg. & White Alum Door	2x4 2' x 4' Housing	2	LEDR	83 CRI:	UNV: 120V-277V*	IND Individual	SYM P12 Prismatic Lens	PxL* Programmed to User Specified Lumen Value. PxW* Programmed to User Specified Wattage Value. GG 1/8" Thick Grid Gasket (Provided Loose)	5DQS (5-Day Quick Ship)
			3		835 3500K					3DQS (3-Day Quick Ship)
					840 4000K					
					90+ CRI:					
				935 3500K	Note: Voltage listed above is the Remote Driver input voltage. The output voltage or fixture voltage is determined by the drive but less than 60Vdc			Note*: Specify Value in Ordering Notes Below		
				940 4000K						
<b>Required Accessories Ordered Separately</b>										
									MRIF3 Three circuit filter for 3 fixtures	
									MRIF6 Entrance filter for 6 fixtures	
									MRIF9 Entrance filter for 9 fixtures	
<a href="#">View MRI Filter Spec Online</a>										

Ordering Notes, If Applicable

# Medical MRI Operating Room Troffers: ML-MRIOR-LED - QS

2x4 Recessed Luminaires

## SPECIFICATIONS

**HOUSING:** One piece, seam welded, hole free .040" 3003 aluminum construction. Complete construction is non-magnetic.

**DOOR FRAME:** .040" 3003 aluminum one piece inset door frame hinged to housing with two stainless steel cables. Secured by captive stainless steel screws.

**GASKETS:** Extruded closed cell Nitrile gasketing located at interface of door and housing. Silicone seal between lens and door frame. GG option provides a loose 1/8" thick adhesive backed gasket intended to adhere to the top face of a suspended grid ceiling for grid profiles that do not already have gasket on them.

**OPTICS:** Standard SYM lens provided is a P12 Prismatic Acrylic lens. The lens is installed with the smooth side of the lens facing the room for easy clean-ability.

**LEDS:** Commercially available in a wide variety of Color Temperature (CCT), FLUX, and CRI. Highly efficient and consistent color maintained to 3 SDMC for color critical applications. B50/L70 and compliant with Zhaga recognized hole patterns. Consult factory for LED options or configurations not listed below.

**ELECTRICAL:** Constant current static low voltage DC provided from included remote driver. Driver is designed to operate without affecting the measurement equipment. Drivers are 0-10v dimming standard and are supplied with the fixtures in an remote enclosure. Proprietary MRI Entrance filters comply with MIL-461 for conducted emissions and must be purchased separately.

**REFLECTOR:** Die formed non-ferrous metal with high reflectance white polyester powder coat finish. Typical reflectivity 92%.

**INSTALLATION:** Fixtures are supplied with .875" flattened knockouts for supply entry. Recessed housings have (4) swing out toggle arms that are used to draw the fixture in to the ceiling for hard lid installation without the need for a yoke hanger. The toggle arm adjuster bolts are accessible from the room side of the luminaire and the actual toggles can be used as means of establishing a seismic support for lay in ceiling installations.

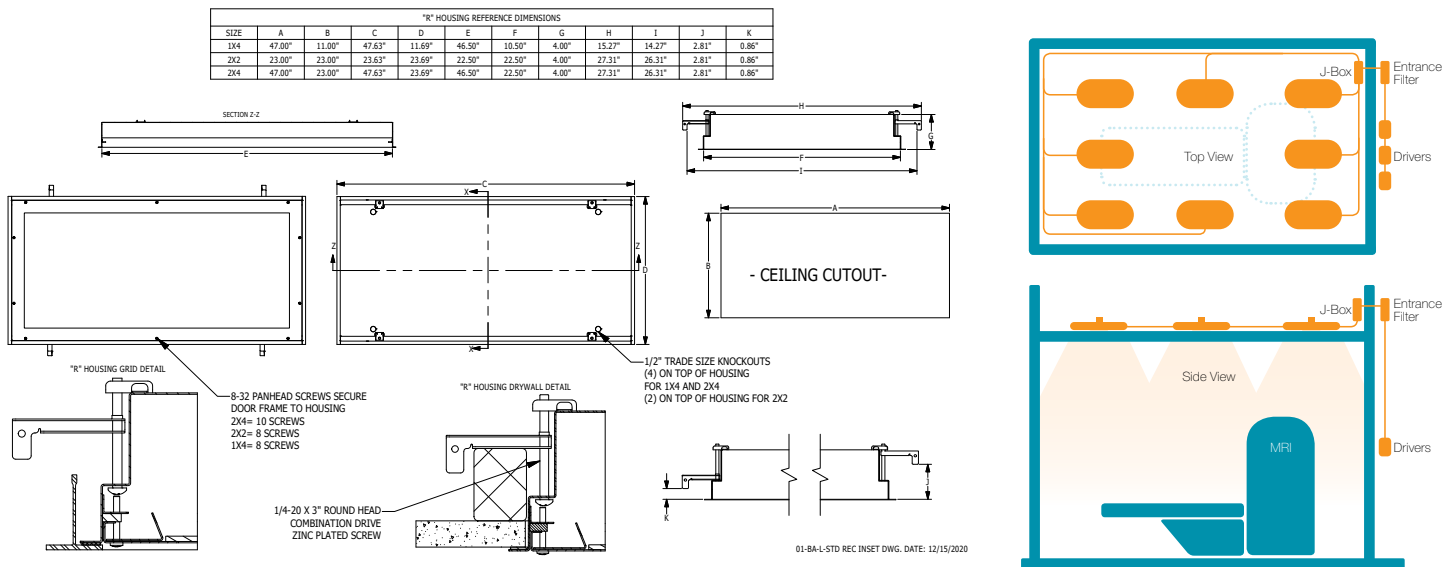
**DOOR FINISH:** White Dupont Alesta using Agion silver ion antimicrobial powder coat finish standard.

**LISTINGS:** Military Standard 461F compliant for conducted and radiated emissions. IP65 rated for dust and water ingress. Suitable for 1700 PSI high pressure hosedowns. ETL listed per UL\_1598 for wet locations. Chicago Plenum Rated. Certified ISO-14644-1 for class 5 through class 9 cleanspaces. Certified Fed Std 209E for Class 100 through Class 100,000 cleanspaces. Drivers and LEDs are covered by a 5 year warranty, the remaining fixture is covered by a 10 year warranty. This product Series is both Build America Buy America (B.A.B.A.) & Buy American Act (B.A.A.) compliant.

**5-DAY QUICK SHIP POLICY:** Quantity restriction of 25 fixtures. Once PO is received by 12:00 PM CST, shipping will occur within 5 business days. Standard freight applies. Expedited shipping to be paid by customer.

**3-DAY QUICK SHIP POLICY:** Quantity restriction of 15 fixtures. Once PO is received by 12:00 PM CST, shipping will occur within 3 business days. Standard freight applies. Expedited shipping to be paid by customer.

## PRODUCT DRAWINGS



## Medical MRI Operating Room Troffers: ML-MRIOR-LED - QS

2x4 Recessed Luminaires

### ENERGY DATA

INSET MRI-FGRS-LED TROFFER (APPROX <sup>1</sup> LUMENS DELIVERED)										
ENCLOSURE SIZE	LIGHT PACKAGE	80 CRI (3000K - 5000K)				90 CRI (3500K, 4000K)				STANDARD DIMMING
		LUMENS	WATTS <sup>2</sup>	EFFICACY <sup>3</sup>	MAX AMB TEMP	LUMENS	WATTS <sup>2</sup>	EFFICACY <sup>3</sup>	MAX AMB TEMP <sup>4</sup>	
2X4	2LEDR	6,718	55	122	45°C (113°F)	6,428	56	115	45°C (113°F)	0-10V 1%
2X4	3LEDR	<b>10,077</b>	<b>83</b>	<b>122</b>	45°C (113°F)	<b>9,642</b>	<b>83</b>	<b>116</b>	45°C (113°F)	0-10V 1%
2X4	EM10	1221-1340	4	NA	40°C (104°F)	950-1160	4	NA	40°C (104°F)	NA

- <sup>1</sup> DELIVERED LUMEN DATA IS EXTRAPOLATED FROM MEASURED DATA @25C WITH NO EXTRA OPTIONS. VARIANCES WILL OCCUR WHEN OPTIONS ARE CHOSEN
- <sup>2</sup> WATTAGE IS MEASURED WITH 4000K SELECTION @ 120vAC AND Tambient = 25C. WATTAGES MAY VARY WITH ALTERNATE CONFIGURATIONS
- <sup>3</sup> EFFICACY CALCULATED USING 4000K CCT DATA.
- <sup>4</sup> MAX AMBIENT TEMP RATING, NON-IC INSTALLATION. TEMP RATING MAY VARY WITH SPECIFIED DRIVERS OR ANY NON STANDARD SELECTION
- <sup>5</sup> 90 MINUTE 10W EMERGENCY DRIVER; LUMENS CALCULATED BASED ON FIXTURE EFFICACY.

### PHOTOMETRICS

#### SYMMETRIC

Key:

