

# Medical MRI Downlight: ML-IBD-LED-QS

Non-Magnetic Sealed 6" Aperture LED Recessed Downlight



- **Non-Ferrous Construction for use in MRI Suites**
- **IP65 Rated**
- **Available Entrance Filters for MRI Compatibility**
- **Each Fixture Supplied With Remote Mounted Driver**
- **Up to 4,250 Lumens Delivered**
- **Assembled in the USA by a Family Owned US Corporation**
- **5 Day Quick Ship For Orders Under 25 Fixtures**
- **3 Day Quick Ship For Orders Under 15 Fixtures**



DISCLAIMER: Although KURTZON has prepared the information contained in this document with all due care, KURTZON does not warrant or represent that the information is free from errors or omission. Whilst the information is considered to be true and correct at the date of publication, changes in circumstances after the time of publication may impact on the accuracy of the information. The information may change without notice and KURTZON is not in any way liable for the accuracy of any information printed and stored or in any way interpreted or used.

## ORDERING GUIDE

Series	Material	Size	LED Type	CCT/CRI	Voltage	Baffle	Door (Trim)	Options	Quick Ship
ML-IBD	4	8		840	UNV				
Series	Material	Size	Light Source		Voltage	Baffle	Door (Trim) Finish	Options	Quick Ship
			LED Type	CCT/CRI					
ML-IBD	4 Non-Magnetic	8 8" Housing	DLM15 1500LM Package	80 CRI	UNV 120V-277V	WB White Grooved Baffle	WT White Painted Trim	10KV 10KV Parallel Surge Protection (One Supplied Per Circuit)	5DQS (5-Day Quick Ship)
			DLM20 2000LM Package	840 4000K		SR Specular Reflector	ST Polished Stainless Trim	3DQS (3-Day Quick Ship)	
			DLM30 3000LM Package					EM7 Remote Mount 7W Battery Pack (Specify Input Voltage)	
			DLM40 4000LM Package						
Required Accessories Ordered Separately									
								MRIF3 Three Circuit Filter for 3 Fixtures	
								MRIF6 Six Circuit Filter for 6 Fixtures	
								MRIF9 Nine Circuit Filter for 9 Fixtures	
View MRI Filter Spec Online <a href="#">↗</a>									

Ordering Notes, If Applicable

## Medical MRI Downlight: ML-IBD-LED-QS

Non-Magnetic Sealed 6" Aperture LED Recessed Downlight

### SPECIFICATIONS

**HOUSING:** Non-magnetic stainless steel body and spun aluminum housing and plaster frame. All hardware and components are not magnetic.

**DOOR FRAME:** Aluminum or stainless steel formed with continuous lens hold-down system and screwless entry. Cleanroom style construction with a smooth cleanable surface with no crevices.

**GASKETS:** Closed microcellular extruded gasket located at interface of door to housing. Silicone seals the lens to the door.

**BAFFLE:** Supplied with a wide variety of baffles and reflectors. See options for availability.

**OPTICS:** Clear non-prismatic nominal 1/8" thick polycarbonate lens is standard and will be mechanically secured and silicone sealed to door frame. DLM40 light source selection is provided without integral diffusing optic.

**LED:** LEDs are 80 CRI, 4000K CCT and are Available in different lumen outputs up to 4,250 Lm delivered. Integrated heatsink maintains thermal efficiency and prolong the life of the light engine.

**ELECTRICAL:** Constant current static low voltage DC provided from included remote driver. Drivers are 0-10v dimming standard as 1% and are supplied with the fixtures in an remote enclosure. Proprietary MRI Entrance filters comply with MIL-461 for conducted emissions and must be purchased separately.

**INSTALLATION:** Suitable for recessed Non-IC Installations into covered ceilings. Adjustable brackets allow for seismic support and secure attachment to metal T-Bars, joists or structural metal framing. Sealed 1/2 inch trade size knockouts for wiring. Suitable for 1, 1.5 and 2 inch T-bar widths as well as drywall or plaster ceiling.

**FINISH:** Antimicrobial white polyester powder coat on doorframe surface. Stainless steel trims are satin polished.

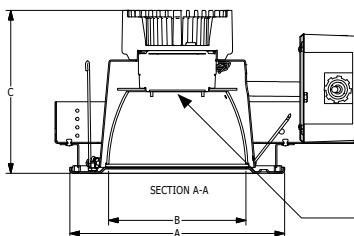
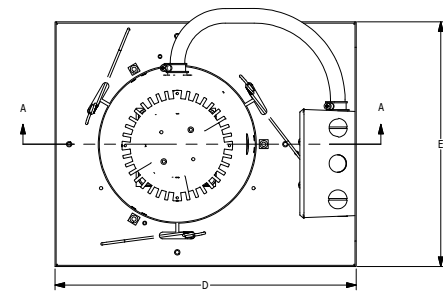
**LISTINGS:** IP65 rated for dust and water ingress. ETL listed per UL\_1598 for wet locations. Military Standard 461G compliant for conducted and radiated emissions. Non-Magnetic construction. Drivers and LEDs are covered by a 5 year warranty, the remaining fixture is covered by a 10 year warranty.

**5-DAY QUICK SHIP POLICY:** Quantity restriction of 25 fixtures. Once PO is received by 12:00 PM CST, shipping will occur within 5 business days. Standard freight applies. Expedited shipping to be paid by customer.

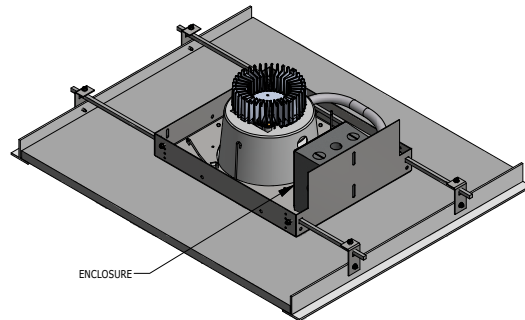
**3-DAY QUICK SHIP POLICY:** Quantity restriction of 15 fixtures. Once PO is received by 12:00 PM CST, shipping will occur within 3 business days. Standard freight applies. Expedited shipping to be paid by customer.

### PRODUCT DRAWINGS

DOWNLIGHT REFERENCE DIMENSIONS					
MODEL	DIM A	DIM B	DIM C	DIM D	DIM E
SBD/IBD	9.00"	5.75"	6.85"	12.65"	10.25"
					26.00"



INTEGRAL DIFFUSING OPTIC  
(NOT INCLUDED FOR DLM40)



12-AA-L-DOWNLIGHT DWG DATE: 4/11/2107

## Medical MRI Downlight: ML-IBD-LED-QS

Non-Magnetic Sealed 6" Aperture LED Recessed Downlight

### ENERGY DATA

SEALED LED DOWNLIGHT						
LIGHT PACKAGE	CRI	DELIVERED LUMENS (Lm) <sup>1</sup>	WATTAGE (W) <sup>2</sup>	EFFICACY (LM/W)	DIMMING AVAILABILITY	MAX AMBIENT TEMP (°C) <sup>3</sup>
DLM15	80+	1,536	15	102.4	0-10V 1%	40°C (104°F)
DLM20	80+	2,049	20	102.4	0-10V 1%	40°C (104°F)
DLM30	80+	<b>3,353</b>	<b>35</b>	<b>97.3</b>	0-10V 1%	40°C (104°F)
DLM40	80+	<b>4,247</b>	<b>35</b>	<b>121.2</b>	0-10V 1%	40°C (104°F)
EM7	NA	528-848Lm	4	NA	0-10V 1%	35°C (95°F)

- 1: DELIVERED LUMEN DATA IS EXTRAPOLATED FROM MEASURED DATA @25C WITH NO EXTRA OPTIONS.
- 2: WATTAGE IS MEASURED @ 120vAC AND Tambient = 25C. WATTAGES MAY VARY AND WHEN OPTIONS ARE SELECTED
- 3: MAX TEMP RATING IS WITH NO OTHER OPTIONS SELECTED,(NON-IC)

### PHOTOMETRICS

#### CLEAR LENS

Key:

\_\_\_\_\_ 0  
 - - - - - 45  
 . . . . . 90

