

Food Processing Troffers: FP-R-LED-5DQS

1x4, 2x2 and 2x4 High Efficiency Recessed LED Luminaires



- NSF2 listed for Non-Food & Splash Zones, Optionally rated for Food Zone Non-Contact
- IP66 Rated
- ETL listed for Wet Locations
- Suitable for High Pressure Hosedowns
- Recessed Housing suitable for Tbar Grid and Hardlid installations
- 0-10v 1% Dimming Standard
- B.A.A. Compliant & Made in the USA by a Family Owned US Corporation
- Robotically seam welded housing
- 5 Day Quick Ship For Orders Under 25 Fixtures



Not all product variations listed on this page are DLC qualified.
Visit <https://www.designlights.org/qpl> to confirm qualification.

DISCLAIMER: Although KURTZON has prepared the information contained in this document with all due care, KURTZON does not warrant or represent that the information is free from errors or omission. While the information is considered to be true and correct at the date of publication, changes in circumstances after the time of publication may impact on the accuracy of the information. The information may change without notice and KURTZON is not in any way liable for the accuracy of any information printed and stored or in any way interpreted or used.

ORDERING GUIDE

Series	Material	Size	Row Qty.	LED Type	CCT/CRI	Voltage	Options	Quick Ship
FP-R				LEDR				5DQS
Series	Material	Size	Row Qty.	LED Type	CCT/CRI	Voltage	Options	Options
FP-R	White 430 SS Hsg. & Polished 304 SS Door	2x2 2x2 Housing	2	LEDR	80 CRI:	120V	PxW Program to Specified Wattage (Replace X with Watts)	5DQS (5-Day Quick Ship)
	OR	3	3		835 3500K	277V	PxL Programmed to User Specified Wattage Value.	
	White AL Hsg. & Polished 304 SS Door	2x4 2x4 Housing	4		840 4000K	UNV	10KV 10kV Surge Protection (one per specified circuit)	
	White AL Hsg. & White AL Door						EM10 10W Integral Emergency Driver (Specify Voltage &	
	White AL Hsg. & White CRS Door						GG 1/8" Thick Grid Gasket (Provided Loose)	

Ordering Notes, If Applicable

Food Processing Troffers: FP-R-LED-5DQS

1x4, 2x2 and 2x4 High Efficiency Recessed LED Luminaires

SPECIFICATIONS

HOUSING: One piece, hole free, robotically seam welded housing has flattened knockouts for a superior seal. Housings are available in .040" 3003 Aluminum or 20Ga 430 Stainless Steel.

DOOR FRAME: One piece door frame with welded corners overlaps the fixture allowing the NSF approved microcellular gasket to seal to the mounting surface. Door frame is hinged by aircraft cables and is supplied with captive stainless steel flush head screws to allow easy wiping of the surface. Available in .050" 3003 Powder coated Alum., 20Ga 304 Polished SS, or 18Ga Powder coated CRS.

GASKETS: NSF Listed closed cell microcellular extruded KleanLock SealPro gasket with vulcanized corners making a one-piece oil and solvent resistant gasket system. GG option provides a loose 1/8" thick adhesive backed gasket intended to adhere to the top face of a suspended grid ceiling for grid profiles that do not already have gasket on them.

OPTICS: Impact resistant .135" thick virgin acrylic with P12 prismatic pattern inverted. Sealed to door with NSF listed RTV silicone.

LEDs: Commercially available in a wide variety of Color Temperature (CCT), FLUX, and CRI. Highly efficient and consistent color maintained to 3 SDMC for color critical applications. B50/L70 and compliant with Zhaga recognized hole patterns. Consult factory for LED options or configurations not listed below.

DRIVERS: Standard Universal Voltage Class 2 drivers are 0-10v Dimmable to 1%, and rated -20C (-4F). They come with at least 2.5Kv surge protection, have less than 10% THD at max load, Ballast Factor Greater than .95 and are programmable to match specific lumen or wattage requirements. Drivers with higher input voltage ratings are available, consult factory for driver specifications.

REFLECTOR: Die formed metal with high reflectance white polyester powder coat finish. Typical reflectivity 92%.

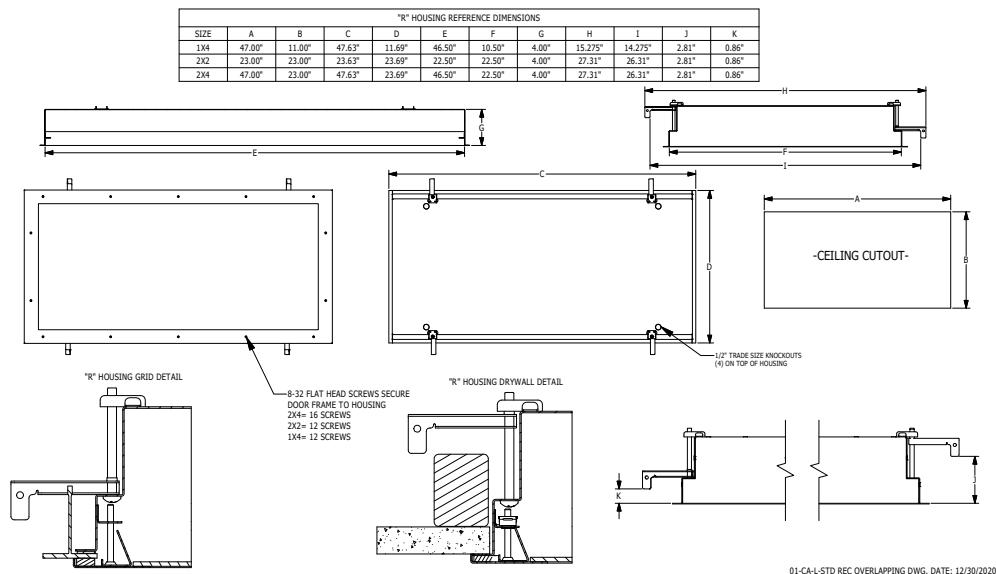
INSTALLATION RECESSED: Suitable for recessed Non-IC installation into covered ceilings. Fixtures are supplied with .875" flattened knockouts for supply entry. Recessed housings have (4) swing out toggle arms that are used to draw the fixture in to the ceiling for hard lid installation without the need for a yoke hanger. The toggle arm adjuster bolts are accessible from the room side of the luminaire and the actual toggles can be used as means of establishing a seismic support for lay in ceiling installations. Confirm ceiling compatibility with dimension drawings below.

FINISH: Stainless steel door frames are satin polished. All other materials are provided with gloss high reflectance white polyester powdercoat with 1000hr salt spray test per ASTM B117.

LISTINGS: NSF2 Listed for Splash & Non-Food Zones. IP66 rated for dust and water ingress. Suitable for 1700 PSI high pressure hosedowns. ETL listed per UL_1598 for wet locations. Chicago Plenum Rated. Certified ISO-14644-1 for class 3 through class 9 cleanspaces. Certified Fed Std 209E for Class 1 through Class 100,000 cleanspaces. Drivers and LEDs are covered by a 5 year warranty, the remaining fixture is covered by a 10 year warranty. This product is Buy American Act (B.A.A.) compliant.

5-DAY QUICK SHIP POLICY: Quantity restriction of 25 fixtures. Once PO is received by 12:00 PM CST, shipping will occur within 5 business days. Standard freight applies. Expedited shipping to be paid by customer.

PRODUCT DRAWINGS



01-CA-L-STD REC OVERLAPPING DWG. DATE: 12/30/2020

Food Processing Troffers: FP-R-LED-5DQS

1x4, 2x2 and 2x4 High Efficiency Recessed LED Luminaires

ENERGY DATA

SURFACE & RECESSED OVERLAPPING LED TROFFER (APPROX ¹ LUMENS DELIVERED)										
ENCLOSURE SIZE	LIGHT PACKAGE	83 CRI (3000K - 5000K)				90 CRI (3500K, 4000K)				STANDARD DIMMING
		LUMENS	WATTS ²	EFFICACY ³	MAX AMB TEMP	LUMENS	WATTS ²	EFFICACY ³	MAX AMB TEMP ⁴	
2X2	2LED	3,165	29	109	45°C (113°F)	3,042	29	105	45°C (113°F)	0-10V 1%
2X2	3LED	4,747	42	113	45°C (113°F)	4,563	42	109	45°C (113°F)	0-10V 1%
2X2	4LED	6,328	55	115	45°C (113°F)	6,084	55	111	45°C (113°F)	0-10V 1%
2X2	EM10	1090-1210	4	NA	40°C (104°F)	890-1110	4	NA	40°C (104°F)	NA
2X4	2LED	6,864	55	125	45°C (113°F)	6,567	56	117	45°C (113°F)	0-10V 1%
2X4	3LED	10,295	83	124	45°C (113°F)	9,851	83	119	45°C (113°F)	0-10V 1%
2X4	4LED	13,726	111	124	45°C (113°F)	13,134	113	116	45°C (113°F)	0-10V 1%
2X4	EM10	1230-1290	4	NA	40°C (104°F)	950-1190	4	NA	40°C (104°F)	NA

¹ DELIVERED LUMEN DATA IS EXTRAPOLATED FROM MEASURED DATA @ 25C WITH NO EXTRA OPTIONS. VARIANCES WILL OCCUR WHEN OPTIONS ARE CHOSEN

² WATTAGE IS MEASURED WITH 4000K SELECTION @ 120VAC AND Tambient = 25C. WATTAGES MAY VARY WITH ALTERNATE CONFIGURATIONS

³ EFFICACY CALCULATED USING 4000K CCT DATA.

⁴ MAX AMBIENT TEMP RATING, NON-IC INSTALLATION. TEMP RATING MAY VARY WITH SPECIFIED DRIVERS OR ANY NON-STANDARD SELECTION

⁵ 90 MINUTE 10W EMERGENCY DRIVER; LUMENS CALCULATED BASED ON FIXTURE EFFICACY.

PHOTOMETRICS

P12 PRISMATIC

Key:

— 0
- - - 45
— 90

