

# Food Processing Troffers - 5 Day Quick Ship

2x2 and 2x4 High Efficiency LED Luminaires



- **IP66 Rated**
- **ETL listed for Wet Locations**
- **NSF Listed for Food, Splash and Non-Food zones**
- **DLC Premium Listings Available**
- **Recessed Housing suitable for Tbar Grid and Hardlid installations**
- **0-10v 1% Dimming Standard**
- **Made in the USA by a Family Owned US Corporation**
- **5 Day Quick Ship For Orders Under 25 Fixtures**



DISCLAIMER: Although KURTZON has prepared the information contained in this document with all due care, KURTZON does not warrant or represent that the information is free from errors or omission. While the information is considered to be true and correct at the date of publication, changes in circumstances after the time of publication may impact on the accuracy of the information. The information may change without notice and KURTZON is not in any way liable for the accuracy of any information printed and stored or in any way interpreted or used.

## ORDERING GUIDE

Series	Installation	Material	Size	Source	CCT	Voltage	Options	Quick Ship
<b>FP</b>	<b>R</b>							<b>5DQS</b>
Series	Installation Type	Material	Size	Source	CCT	Voltage	Options	Quick Ship
FP	R: Recessed	3: White 430 SS Hsg. & Polished 304 SS Door 4: White AL Hsg. & Polished 304 SS Door 5: White AL Hsg. & White AL Door 7: White AL Hsg. & White CRS Door	2x2: 2' x 2' Housing OR 2x4: 2' x 4' Housing	2/LEDR 3/LEDR 4/LEDR	80 CRI: 835 = 3500K CCT 840 = 4000K CCT	120V 277V UNV	EM10: 10W Integral LED EM (Specify Input Voltage) EM20: 20W External LED EM (Specify Input Voltage) PxL: Programmed to User Specified Lumen Value.000 PxW: Programmed to User Specified Wattage Value.000 10KV: 10KV Parallel Surge Protection (One Supplied Per Circuit)	5DQS: (5-Day Quick Ship)

# Food Processing Troffers - 5 Day Quick Ship

2x2 and 2x4 High Efficiency LED Luminaires

## SPECIFICATIONS

**HOUSING:** One piece, hole free, robotically seam welded housing has flattened knockouts for a superior seal. Recessed housings are available in .040" 3003 Aluminum or 20Ga 430 Stainless Steel.

**DOOR FRAME:** One piece door frame with welded corners overlaps the fixture allowing the NSF approved microcellular gasket to seal to the mounting surface. Door frame is hinged by aircraft cables and is supplied with captive stainless steel flush head screws to allow easy wiping of the surface. Available in .050" 3003 Powder coated Alum. , 20Ga 304 Polished SS, or 18Ga Powder coated CRS.

**GASKETS:** NSF Listed closed cell microcellular extruded KleanLock SealPro gasket with vulcanized corners making a one-piece oil and solvent resistant gasket system.

**LENS:** Impact resistant .135" thick virgin acrylic with P12 prismatic pattern inverted. Sealed to door with NSF listed RTV silicone. See "Options" for other choices.

**LEDS:** Commercially available in a wide variety of Color Temperature (CCT), FLUX, and CRI. Highly efficient and consistent color maintained to 3 SDMC for color critical applications. B50/L70 and compliant with Zhaga recognized hole patterns. Consult factory for LED options or configurations not listed below.

**DRIVERS:** Standard Universal Voltage Class 2 drivers are 0-10v Dimmable to 1% for most LED configurations, and rated -20C (-4F). They come with at least 2.5Kv surge protection, have less than 10% THD at max load, Ballast Factor Greater than .95 and are programmable to match specific lumen or wattage requirements. Drivers with higher input voltage ratings are available, consult factory for driver specifications.

**REFLECTOR:** Die formed metal with high reflectance white polyester powder coat finish. Typical reflectivity 92%.

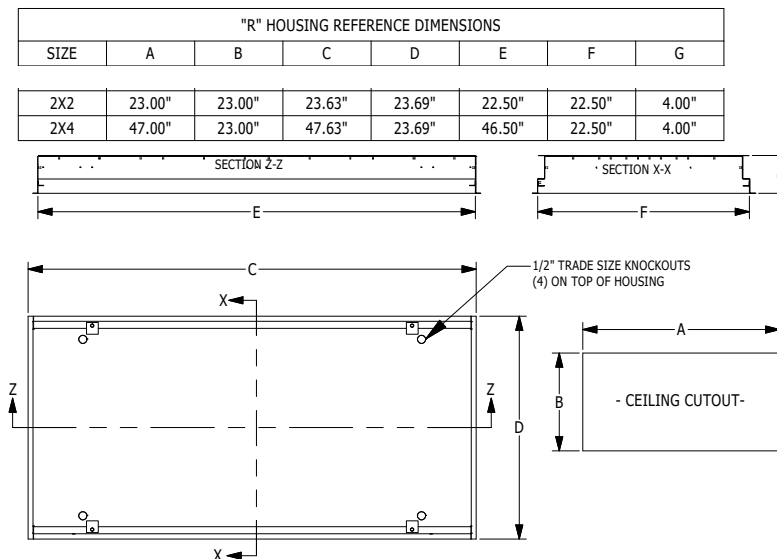
**INSTALL RECESSED:** One fixture suitable for Grid and Flanged installation. Accommodates 1" and 1.5" T-Bar Grid (Consult factory for 2" T-Bar Grid compatibility). Four adjustable toggle arms with holes for seismic support wire attachment. Supply entry via 1/2" trade size flattened knockouts.

**FINISH:** Gloss white high reflectance 1000 hr. salt spray polyester powder coat finish standard for all recessed housings. Stainless steel doorframes and surface housings are satin polished unless option WHT is chosen.

**LISTINGS:** NSF2 Listed for Food Zones. IP66 rated for dust and water ingress. Suitable for 1700 PSI high pressure hosedowns. ETL listed per UL\_1598 for wet locations. Chicago Plenum Rated. Certified ISO-14644-1 for class 3 through class 9 cleanspaces. Certified Fed Std 209E for Class 1 through Class 100,000 cleanspaces. Drivers and LEDs are covered by a 5 year warranty, the remaining fixture is covered by a 10 year warranty.

**5-DAY QUICK SHIP POLICY:** Quantity restriction of 25 fixtures. Once PO is received by 12:00 PM CST, shipping will occur within 5 business days. Standard freight applies. Expedited shipping to be paid by customer.

## PRODUCT DRAWINGS



# Food Processing Troffers - 5 Day Quick Ship

2x2 and 2x4 High Efficiency LED Luminaires

## ENERGY DATA

OVERLAP-FGRS-LED TROFFER (APPROX <sup>1</sup> LUMENS DELIVERED)						
ENCLOSURE SIZE	LIGHT PACKAGE	80 CRI (3000K - 5000K)				STANDARD DIMMING
		LUMENS	WATTS <sup>2</sup>	EFFICACY <sup>3</sup>	MAX AMB TEMP	
2X2	2LEDR	4,450	37	119	40°C (104°F)	0-10V 1%
2X2	3LEDR	6,670	55	121	40°C (104°F)	0-10V 1%
2X2	4LEDR	<b>8,897</b>	73	122	40°C (104°F)	0-10V 1%
2X2	EM10	950-1150	4	NA	40°C (104°F)	NA
2X4	2LEDR	9,180	74	124	40°C (104°F)	0-10V 1%
2X4	3LEDR	13,770	111	124	40°C (104°F)	0-10V 1%
2X4	4LEDR	<b>18,370</b>	147	125	40°C (104°F)	0-10V 1%
2X4	EM10	1180-1270	4	NA	40°C (104°F)	NA

<sup>1</sup> DELIVERED LUMEN DATA IS EXTRAPOLATED FROM MEASURED DATA @25C WITH NO EXTRA OPTIONS. VARIANCES WILL OCCUR WHEN OPTIONS ARE CHOSEN

<sup>2</sup> WATTAGE IS MEASURED WITH 4000K SELECTION @ 120vAC AND Tambient = 25C. WATTAGES MAY VARY WITH ALTERNATE CONFIGURATIONS

<sup>3</sup> EFFICACY CALCULATED USING 4000K CCT DATA.

<sup>4</sup> MAX AMBIENT TEMP RATING, NON-IC INSTALLATION. TEMP RATING MAY VARY WITH SPECIFIED DRIVERS OR ANY NON STANDARD SELECTION

<sup>6</sup> 90 MINUTE 10W EMERGENCY DRIVER; LUMENS CALCULATED BASED ON FIXTURE EFFICACY.