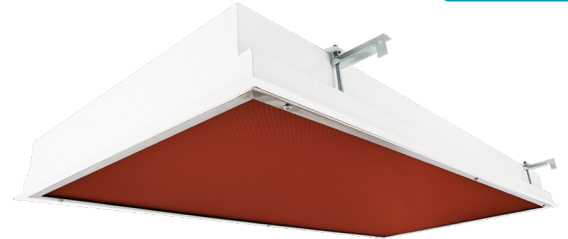


Cleanroom EL Vivarium - 5 Day Quick Ship

2x2 and 2x4 Red/White LED Luminaires



- **IP55 Rated**
- **ETL Listed for Wet Locations**
- **Suitable for ISO 5-9 Cleanspaces**
- **Suitable for FED Std 209E Class 100-100,000 Cleanspaces**
- **Recessed housing suitable for Tbar Grid and Hardlid installations**
- **Channel Inset Door Frame**
- **Robotically Seam Welded Housing**
- **Available With White / RED Switching**
- **Narrow spectrum non-filtered RED LEDs**
- **Available in 630nm REDs**
- **Made in the USA by a Family Owned US Corporation**
- **5 Day Quick Ship For Orders Under 25 Fixtures**



DISCLAIMER: Although KURTZON has prepared the information contained in this document with all due care, KURTZON does not warrant or represent that the information is free from errors or omission. While the information is considered to be true and correct at the date of publication, changes in circumstances after the time of publication may impact on the accuracy of the information. The information may change without notice and KURTZON is not in any way liable for the accuracy of any information printed and stored or in any way interpreted or used.

ORDERING GUIDE

| Series | Installation Type | Material | Size | Red LED | White LED | CCT (White LED) | Voltage | Options | Quick Ship |
|-----------|-------------------|--|--|--|----------------------------|---|---------------------|---|--------------------------|
| EL | R | | | | | | | | 5DQS |
| Series | Installation Type | Material | Size | Red LED | White LED | CCT (White LED) | Voltage | Options | Quick Ship |
| EL | R: Recessed | 3: White 430 SS Hsg. & Polished 304 SS Door 4: White AL Hsg. & Polished 304 SS Door 5: White AL Hsg. & White AL Door | 2x2: 2' x 2' Housing MAX 4 Arrays Total OR 2x4: 2' x 4' Housing MAX 4 Arrays Total | 1/RLED630 2/RLED630 3/RLED630 4/RLED630 | 1/LEDR 2/LEDR 3/LEDR | 83 CRI: 835 = 3500K CCT 840 = 4000K CCT | 120V 277V UNV | EM10: 10W Integral LED EM (Specify Input Voltage) EM20: 20W Remote LED EM (Specify Input Voltage) PxL: Programmed to User Specified Lumen Value. PxW: Programmed to User Specified Wattage Value. 10KV: 10KV Parallel Surge Protection (One Supplied Per Circuit) | 5DQS: (5-Day Quick Ship) |

Cleanroom EL Vivarium - 5 Day Quick Ship

2x2 and 2x4 Red/White LED Luminaires

SPECIFICATIONS

HOUSING: One piece, hole free, robotically seam welded housing has flattened knockouts for a superior seal. Recessed housings are available in .040" 3003 Aluminum or 20Ga 430 Stainless Steel.

DOOR FRAME: Inset door frame made from welded channels regresses into the housing to allow the neoprene gasket to seal to the housing. Door frame is hinged by aircraft cables and secures to housing with captive stainless steel pan head screws. Available in .040" 3003 Powder coated Alum. , 20Ga 304 Polished SS.

GASKETS: Closed cell 100% pure neoprene gasket with vulcanized corners making a one-piece oil and solvent resistant gasket system.

LENS: Impact resistant .135" thick virgin acrylic with P12 prismatic pattern inverted. See "Options" for other choices.

LEDS: Fixture available with Red only or Red & White LEDs, each color will be supplied with its own driver for dual switching. Red LED's provide a narrow 630nm spectrum light for wavelength sensitive applications. White high efficiency LEDs are commercially available and available in a wide variety of CRI and CCT. All boards have zhaga recognized hole patterns and come with a 5 year warranty.

DRIVERS: Standard Universal Voltage Class 2 drivers are 0-10v Dimmable to 1% for most LED configurations. They come with at least 2.5Kv surge protection, have less than 10% THD at max load, Ballast Factor Greater than .95 and are programmable to match specific lumen or wattage requirements. Drivers with higher input voltage ratings are available, consult factory for driver specifications. (each color LED comes standard with its own driver)

REFLECTOR: Die formed metal with high reflectance white polyester powder coat finish. Typical reflectivity 92%.

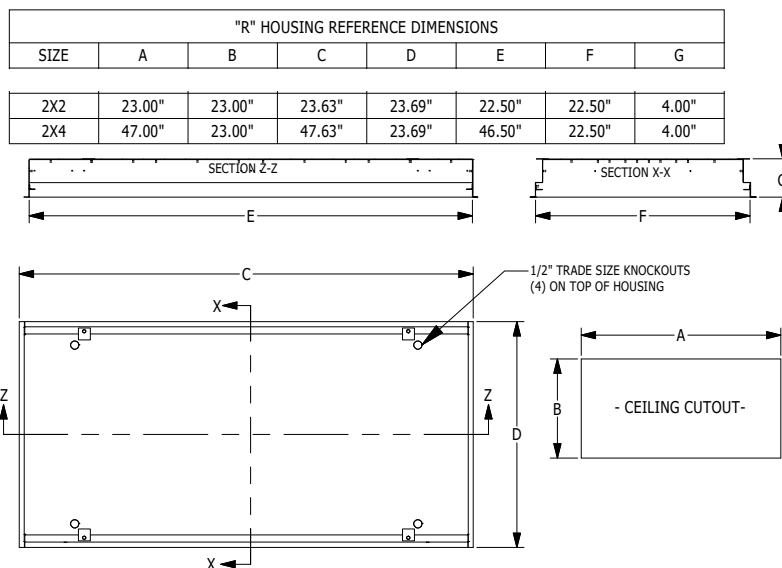
INSTALL RECESSED: One fixture suitable for Grid and Flanged installation. Accommodates 1" and 1.5" T-Bar Grid (Consult factory for 2" T-Bar Grid compatibility). Four adjustable toggle arms with holes for seismic support wire attachment. Supply entry via 1/2" trade size flattened knockouts. Non-IC installation

FINISH: Gloss white high reflectance 1000 hr. salt spray polyester powder coat finish standard for all housings. Stainless steel doorframes are satin polished unless option WHT is chosen.

LISTINGS: IP55 rated for dust and water ingress. ETL listed per UL_1598 for wet locations. Chicago Plenum Rated. Certified ISO-14644-1 for class 5 through class 9 cleanspaces. Certified Fed Std 209E for Class 100 through Class 100,000 cleanspaces. Optionally NSF2 Listed for Non-Food Zones. Drivers and LEDs are covered by a 5 year warranty, the remaining fixture is covered by a 10 year warranty.

5-DAY QUICK SHIP POLICY: Quantity restriction of 25 fixtures. Once PO is received by 12:00 PM CST, shipping will occur within 5 business days. Standard freight applies. Expedited shipping to be paid by customer.

PRODUCT DRAWINGS



Cleanroom EL Vivarium - 5 Day Quick Ship

2x2 and 2x4 Red/White LED Luminaires

ENERGY DATA

| CHANNEL-FGRS-RED LED TROFFER | | | | | | | | | | |
|------------------------------|---------------|----------|--------|-------|----------|-------------|-------|----------|---------------------|----------------------|
| ENCLOSURE SIZE | LED SELECTION | DIMMING | 83 CRI | | | 630nm (RED) | | | AMBIENT TEMP RATING | |
| | | | LUMENS | WATTS | EFFICACY | LUMENS | WATTS | EFFICACY | MINIMUM | MAXIMUM ³ |
| 2x2 | 1LED | 0-10V 1% | 2,300 | 19 | 121 | NA | | | -20°C (-4°F) | 40°C (104°F) |
| 2x2 | 2LED | 0-10V 1% | 4,684 | 37.4 | 125 | | | | -20°C (-4°F) | 40°C (104°F) |
| 2x2 | 3LED | 0-10V 1% | 6,985 | 55.2 | 127 | | | | -20°C (-4°F) | 40°C (104°F) |
| 2X2 | 1RLED | 0-10V 1% | NA | | | 549 | 14 | 39 | -20°C (-4°F) | 40°C (104°F) |
| 2X2 | 2RLED | 0-10V 1% | | | | 1011 | 27 | 37 | -20°C (-4°F) | 40°C (104°F) |
| 2X2 | 3RLED | 0-10V 1% | | | | 1560 | 41 | 38 | -20°C (-4°F) | 40°C (104°F) |
| 2X2 | 4RLED | 0-10V 1% | | | | 2022 | 53 | 38 | -20°C (-4°F) | 40°C (104°F) |
| 2X4 | 1LED | 0-10V 1% | 4,700 | 38 | 124 | NA | | | -20°C (-4°F) | 40°C (104°F) |
| 2X4 | 2LED | 0-10V 1% | 9,625 | 74 | 130 | | | | -20°C (-4°F) | 40°C (104°F) |
| 2X4 | 3LED | 0-10V 1% | 14,380 | 111 | 129 | | | | -20°C (-4°F) | 40°C (104°F) |
| 2X4 | 1RLED | 0-10V 1% | NA | | | 1247 | 27 | 46 | -20°C (-4°F) | 40°C (104°F) |
| 2X4 | 2RLED | 0-10V 1% | | | | 2298 | 53 | 43 | -20°C (-4°F) | 40°C (104°F) |
| 2X4 | 3RLED | 0-10V 1% | | | | 3545 | 80 | 44 | -20°C (-4°F) | 40°C (104°F) |
| 2X4 | 4RLED | 0-10V 1% | | | | 4596 | 106 | 43 | -20°C (-4°F) | 40°C (104°F) |

- ¹ DELIVERED LUMEN DATA IS EXTRAPOLATED FROM MEASURED DATA @25C WITH NO EXTRA OPTIONS. VARIANCES WILL OCCUR WHEN OTHER SELECTIONS ARE MADE
- ² WATTAGE IS MEASURED WITH LED 840 SELECTION @ 120vAC AND Tambient = 25C. WATTAGES WILL VARY AND INCREASE WHEN ALTERNATE OPTIONS ARE SELECTED
- ³ MAX AMBIENT TEMP RATING, NON-IC INSTALLATION. TEMP RATING IS WITH NO OTHER OPTIONS SELECTED. WHITE LEDS ONLY SUITABLE FOR 40C AMBIENT

PHOTOMETRICS

EL-R-5-2X4-1/RLED-630-UNV

Report No: 19741.0
 Total Lumens: 1,228
 Wattage: 27.206
 Efficacy: 45.1 (Lumens Per Watt)
 Fixture Size: 2'x4'
 Key:
 - - - - - 0
 45
 _____ 90

