

Medical Patient Room Troffers

6"x24" & 6"x48" Recessed Fluorescent Luminaire

- **For Patient Rooms**
- **2-Way Switching for Exam/Ambient Modes**
- **Available with Low Voltage Controller Setup**
- **Frosted Acrylic Lens for Glare Reduction**
- **Optional Dimmable Ballasts**
- **B.A.A. & B.A.B.A Compliant & Made in the USA by a Family Owned US Corporation**



DISCLAIMER: Although KURTZON has prepared the information contained in this document with all due care, KURTZON does not warrant or represent that the information is free from errors or omission. While the information is considered to be true and correct at the date of publication, changes in circumstances after the time of publication may impact on the accuracy of the information. The information may change without notice and KURTZON is not in any way liable for the accuracy of any information printed and stored or in any way interpreted or used.

ORDERING GUIDE

Series	Installation Type	Material	Size	Lamps	Voltage	Options
ML						
Series	Installation Type	Material	Size	Lamps	Voltage	Options
ML	F/PR: Flange G/PR: Grid	1: White CRS Hsg.	6x48: 6" x 48" Housing 6x24: 6" x 24" Housing	2, or 3/T5: F28T5 2, or 3/T5HO: F54FTHO	120V 277V UNV 347V*	FC: Fuse & Holder (One Supplied Per Circuit) DIM: Electronic Dimming Ballast 1/EM: 1 Lamp EM (See Chart For Lamp Compatibility) LVC: Low Voltage Controller RF: RF Filtered Circuits Note: Two circuits, ambient and exam, are provided as standard.

Medical Patient Room Troffers

6"x24" & 6"x48" Recessed Fluorescent Luminaire

SPECIFICATIONS

HOUSING: Formed and Welded 20Ga Steel Housing. Flange Housing is provided with factory installed flange kit.

REFLECTOR: Full reflector panel designed to enhance asymmetric distribution. High reflectance white powder coat finished (minimum reflectivity 92%).

LENS: One piece frosted linear regressed acrylic lens provided high lamp hiding.

LAMPS: Suitable for most T5, and T5HO lamps. (By others)

ELECTRICAL: Standard Class P Ballast - Electronic < 10% THD, high performance instant start universal voltage (120-277). See options for Rapid Start, Dimming, or Cold Temp Ballasts, Others available (must specify).

INSTALL GRID: Adjustable Zee-brackets provide even support. See options for integrated seismic support brackets. Wireway access is through a removable plate containing two silicone sealed knockouts. Note: This fixture is not for plaster or drywall ceilings.

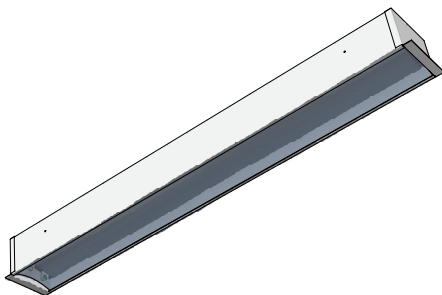
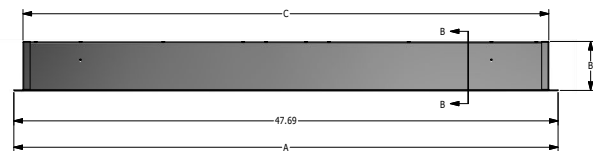
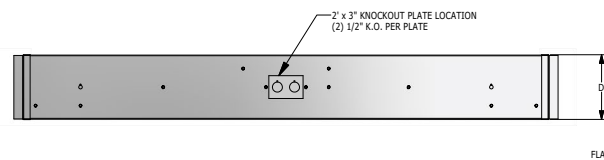
INSTALL FLANGE: Two adjustable yoke mounting brackets provide even support. Wireway access is through a removable plate containing two silicone sealed knockouts. Note: This fixture is not for T-Bar Grid ceilings.

FINISH: White polyester powder coated over multi-stage pretreatment. See options for DuPont Alesta™ using Agion® silver ion antimicrobial powder coat finished housings.

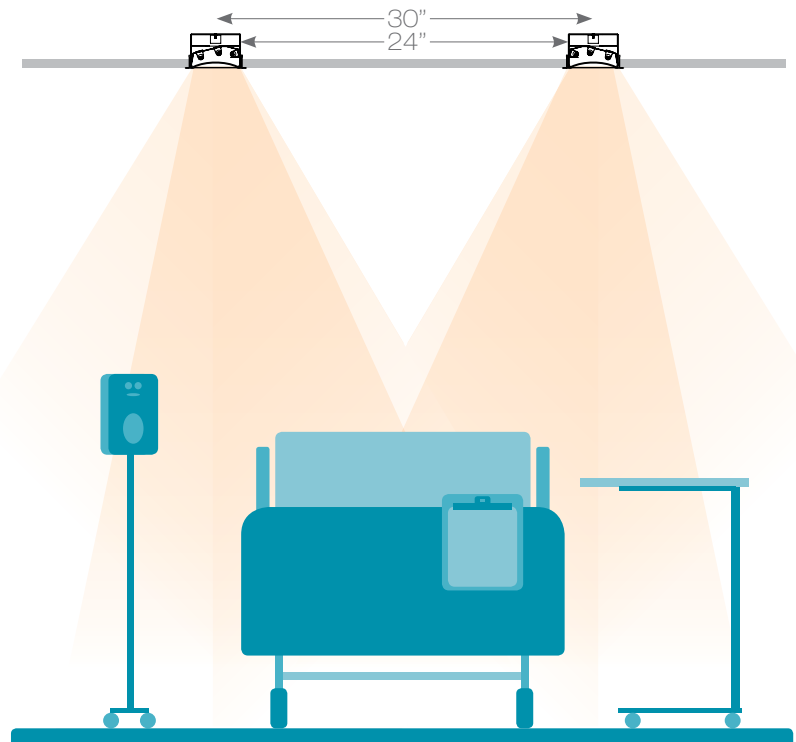
LISTINGS: UL listed per UL_1598 for damp locations. Electrical components covered under manufacturers warranty, the remaining fixture is covered by a 10 year warranty. This product Series is both Build America Buy America (B.A.B.A.) & Buy American Act (B.A.A.) compliant.

PRODUCT DRAWINGS

6x48 PATIENT ROOM FLUORESCENT				
SIZE	DIM A	DIM B	DIM C	DIM D
6 x 48	47.68"	4.30"	46.06"	5.68"
6 x 24	23.68"	4.30"	22.50"	5.68"



14-AA-F-6x48 PATIENT ROOM DWG DATE: 7/31/19



Two recessed asymmetric distribution luminaires installed at 30 inches on center provide examination level illumination across the full bed surface.

Medical Patient Room Troffers

6"x24" & 6"x48" Recessed Fluorescent Luminaire

ENERGY DATA

FLUORESCENT PATIENT ROOM TROFFER WITH EXAM/AMBIENT MODE							
ENCLOSURE SIZE	ORDERED LAMP QTY ¹	LAMP QTY ON AMBIENT CIRCUIT ¹		LAMP QTY ON EXAM CIRCUIT ¹		(1/EM) 1 LAMP EMERGENCY ²	MAX AMBIENT TEMP (°C) ³
		F28WT5	F54WT5HO	F28WT5	F54WT5HO		
6x48	2/T5	1 LAMP	-	1 LAMP	-	1050 Lm	40°C (104°F)
6x48	2/T5HO	-	1 LAMP	-	1 LAMP	1150 Lm	40°C (104°F)
6x48	3/T5	1 LAMP	-	2 LAMPS	-	1050 Lm	40°C (104°F)
6x48	3/T5HO	-	1 LAMP	-	2 LAMPS	1150 Lm	40°C (104°F)
6x24	2/T5	1 LAMP	-	1 LAMP	-	NA	40°C (104°F)
6x24	2/T5HO	-	1 LAMP	-	1 LAMP	NA	40°C (104°F)
6x24	3/T5	1 LAMP	-	2 LAMPS	-	NA	40°C (104°F)
6x24	3/T5HO	-	1 LAMP	-	2 LAMPS	NA	40°C (104°F)

¹ LAMPS SUPPLIED BY OTHERS

² TOTAL GENERATED LUMENS (FROM STD EM BALLAST SPECIFICATION SHEET) HIGHER LUMEN OPTIONS MAY BE AVAILABLE

³ TEMP RATING MAY VARY WITH ALTERNATE SPECIFIED BALLASTS OR ANY NON STANDARD SELECTION