

# Indoor Sports Troffers: IS-S-LED

1x4, 2x2 and 2x4 High Durability LED Luminaires

- For handball, squash, racketball, and other indoor sports applications
- Optional "GDF" frame provides door with integral grill
- Polycarbonate lensing standard
- B.A.A. Compliant & Made in the USA by a Family Owned US Corporation
- IP65 Rated



DISCLAIMER: Although KURTZON has prepared the information contained in this document with all due care, KURTZON does not warrant or represent that the information is free from errors or omission. While the information is considered to be true and correct at the date of publication, changes in circumstances after the time of publication may impact on the accuracy of the information. The information may change without notice and KURTZON is not in any way liable for the accuracy of any information printed and stored or in any way interpreted or used.

## ORDERING GUIDE

Series	Material	Size	Light Source	CCT/CRI	Voltage	Optics	Options
<b>IS-S</b>							
Series	Material	Size	Light Source	CCT/CRI	Voltage	Optics	Options
IS-S	1 White CRS Hsg. & White CRS Door	1x4 1' x 4' Housing	1/LEDR	83 CRI:	120V	P12ACR 0.135" P12 Prismatic Impact Resistant Acrylic (Inverted)	SW Wet Location Hub Supplied (not installed)
			2/LEDR	830 3000K	277V	LEX 0.125" P12 Prismatic Polycarbonate (Inverted)	PxL * Programmed to User Specified Lumen Value.
	2 White CRS Hsg. & Polished 304 SS Door	2x2 2' x 2' Housing	2/LEDH	835 3500K	UNV	A19 0.156" A19 Prismatic Impact Resistant Acrylic (Inverted)	PxW * Programmed to User Specified Wattage Value.
			2/LEDHF	840 4000K	347V*	TG 0.156" Prismatic Tempered Glass (Inverted)	10KV 10KV Parallel Surge Protection (One Supplied Per Circuit)
	3 Poshled 430 SS Hsg. & Polished 304 SS Door	2x4 2' x 4' Housing	2/LEDR	850 5000K	*347V Available with 10% dimming, not all options are compatible with 347V	HIA 0.140" P12 Prismatic High Impact Resistant Acrylic (Inverted)	GTD Generator Transfer Device
			2/LEDH	90+ CRI:		FROST 0.125" Flat Diffusing Frost Acrylic	WHIP Must Specify Length and Wire Qty
	4 White AL Hsg. & Polished 304 SS Door	2x4 2' x 4' Housing	3/LEDR	935 3500K		ZDBW 0.125" Flat Diffused Acrylic with Bi-Directional Batwing Distribution	OCCMW Internal microwave OCC Sensor
			3/LEDH	935 3500K		LBW 0.125" Flat Diffused Acrylic with Linear Batwing Distribution	FC Fuse & Holder (One Supplied Per Circuit)
	5 White AL Hsg. & White AL Door	2x4 2' x 4' Housing	4/LEDR	940 4000K		GH85 0.125" Flat Diffused Acrylic with Glare Suppression Distribution	EM10** 10W Integral LED EM (Specify Input Voltage)
			4/LEDH	940 4000K			EM20 20W Remote LED EM (Specify Input Voltage)
	6 White CRS Hsg. & White AL Door	2x4 2' x 4' Housing	4/LEDHF	940 4000K			EDL -40F Electronic Driver
							WHT White Finished Door & HSG
	7 White AL Hsg. & White CRS Door	2x4 2' x 4' Housing					AMW Anti-Microbial White Powdercoat
							2/ED Two Drivers/Two Circuits
						GDF CRS door frame with integral grill (2x2 OR 2x4 only)	
						*Note: Specify Value in Ordering Notes Below **Note: EM10 remote mount for 2x4 4/LEDHF selections.	

Ordering Notes, If Applicable

# Indoor Sports Troffers: IS-S-LED

1x4, 2x2 and 2x4 High Durability LED Luminaires

## SPECIFICATIONS

**HOUSING:** One piece, hole free, robotically seam welded housing has flattened knockouts for a superior seal. Housings are available in .040" 3003 Aluminum, 20Ga 430 Stainless Steel, or 20Ga Cold Rolled Steel.

**DOOR FRAME:** One piece inset door frame with seam welds regressing flush into the housing while creating a seal. Door frame is hinged by aircraft cables and secures to housing with captive stainless steel pan head screws. Available in .040" 3003 Powder coated Alum. , 20Ga 304 Polished SS, or 18Ga 1008 Powder coated CRS. Optional CRS door frame with an integral grill available for 2x2 or 2x4 housings

**GASKETS:** Closed cell 100% pure neoprene gasket with vulcanized corners making a one-piece oil and solvent resistant gasket system.

**OPTICS:** Standard P12 prismatic Polycarbonate lens is provided when no other options are selected. All prismatic lensing options come with an inverted lens so the smooth side faces the room for easy cleaning. All optics are sealed to the door with NSF listed RTV silicone sealant. Other optics are available, consult factory for more information or options not listed.

**LEDS:** Commercially available in a wide variety of Color Temperature (CCT), FLUX, and CRI. Highly efficient and consistent color maintained to 3 SDMC for color critical applications. B50/L70 and compliant with Zhaga recognized hole patterns. Consult factory for LED options or configurations not listed below.

**DRIVERS:** Standard Universal Voltage Class 2 drivers are 0-10v Dimmable to 1%. They come with at least 2.5Kv surge protection, have less than 10% THD at max load, Ballast Factor Greater than .95 and are programmable to match specific lumen or wattage requirements. Drivers with higher input voltage ratings are available, consult factory for driver specifications.

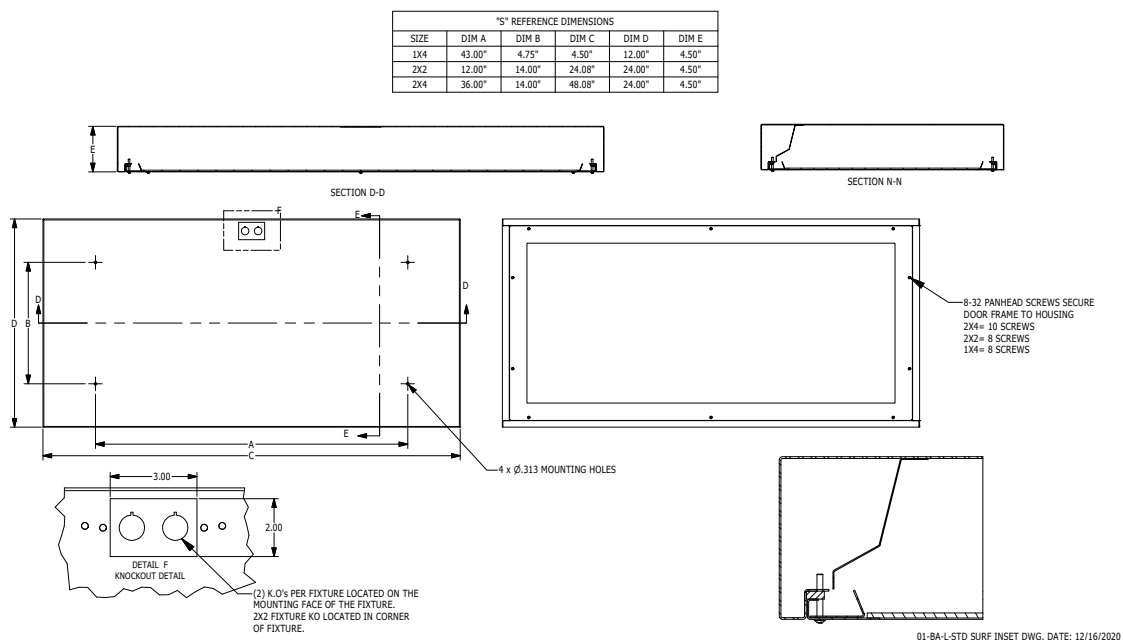
**REFLECTOR:** Die formed metal with high reflectance white polyester powder coat finish. Typical reflectivity 92%.

**INSTALLATION:** Four .312" dia. mounting holes and a removable gasketed wiring access plate with Supply entry via 1/2" trade size flattened knockouts. Optional mounting brackets available for pendant mounting. Suitable for surface installation onto covered ceilings only.

**FINISH:** Stainless steel door frames are satin polished unless WHT or AMW options are selected. All other materials are provided with gloss high reflectance white polyester powdercoat with 1000hr salt spray test per ASTM B117. AMW option provides a white anti-microbial polyester powder coat to all exposed surfaces.

**LISTINGS:** IP65 rated for dust and water ingress. Suitable for 1700 PSI high pressure hosedowns. ETL listed per UL\_1598 for wet locations. Drivers and LEDs are covered by a 5 year warranty, the remaining fixture is covered by a 10 year warranty.

## PRODUCT DRAWINGS



# Indoor Sports Troffers: IS-S-LED

1x4, 2x2 and 2x4 High Durability LED Luminaires

## ENERGY DATA

POLY INSET-FGRS-LED TROFFER (APPROX <sup>1</sup> LUMENS DELIVERED)										
ENCLOSURE SIZE	LIGHT PACKAGE	80 CRI (3000K - 5000K)				90 CRI (3500K, 4000K)				STANDARD DIMMING
		LUMENS	WATTS <sup>2</sup>	EFFICACY <sup>3</sup>	MAX AMB TEMP	LUMENS	WATTS <sup>2</sup>	EFFICACY <sup>3</sup>	MAX AMB TEMP <sup>4</sup>	
1X4	1LEDR	2,731	29	94	45°C (113°F)	2,632	29	91	45°C (113°F)	0-10V 1%
1X4	2LEDR	5,460	55	99	45°C (113°F)	5,263	56	94	45°C (113°F)	0-10V 1%
1X4	2LEDH	10,579	109	97	35°C (95°F)	<b>10,103</b>	<b>109</b>	<b>93</b>	35°C (95°F)	0-10V 1%
1X4	2LEDHF	15,611	153	102	35°C (95°F)	13,009	183	71	35°C (95°F)	0-10V 1%
1X4	EM10	940-1020	4	NA	40°C (104°F)	710-940	4	NA	40°C (104°F)	NA
2X2	2LEDR	2,717	29	94	45°C (113°F)	2,622	29	90	45°C (113°F)	0-10V 1%
2X2	3LEDR	4,076	42	97	45°C (113°F)	3,932	42	94	45°C (113°F)	0-10V 1%
2X2	2LEDH	5,346	55	97	40°C (104°F)	5,097	55	93	40°C (104°F)	0-10V 1%
2X2	4LEDR	5,435	55	99	45°C (113°F)	5,243	56	94	45°C (113°F)	0-10V 1%
2X2	3LEDH	8,020	80	100	40°C (104°F)	<b>7,648</b>	<b>81</b>	<b>95</b>	35°C (95°F)	0-10V 1%
2X2	4LEDH	10,693	109	98	40°C (104°F)	10,194	109	94	35°C (95°F)	0-10V 1%
2X2	4LEDHF	16,244	153	106	35°C (95°F)	13437	184	73	35°C (95°F)	0-10V 1%
2X2	EM10	940-1060	4	NA	40°C (104°F)	730-950	4	NA	40°C (104°F)	NA
2X4	2LEDR	5,912	55	107	45°C (113°F)	5,657	56	101	45°C (113°F)	0-10V 1%
2X4	3LEDR	8,868	83	107	45°C (113°F)	8,485	83	102	45°C (113°F)	0-10V 1%
2X4	2LEDH	11,670	109	107	40°C (104°F)	11,089	109	102	40°C (104°F)	0-10V 1%
2X4	4LEDR	11,824	111	107	45°C (113°F)	11,313	113	100	45°C (113°F)	0-10V 1%
2X4	3LEDH	17,505	164	107	40°C (104°F)	16,634	164	101	40°C (104°F)	0-10V 1%
2X4	4LEDH	23,339	220	106	40°C (104°F)	<b>22,178</b>	<b>220</b>	<b>101</b>	40°C (104°F)	0-10V 1%
2X4	4LEDHF	35,851	305	118	35°C (95°F)	31,103	373	83	35°C (95°F)	0-10V 1%
2X4	EM10	1060-1180	4	NA	40°C (104°F)	830-1020	4	NA	40°C (104°F)	NA

- <sup>1</sup> DELIVERED LUMEN DATA IS EXTRAPOLATED FROM MEASURED DATA @ 25C WITH NO EXTRA OPTIONS. VARIANCES WILL OCCUR WHEN OPTIONS ARE CHOSEN
- <sup>2</sup> WATTAGE IS MEASURED WITH 4000K SELECTION @ 120vAC AND Tambient = 25C. WATTAGES MAY VARY WITH ALTERNATE CONFIGURATIONS
- <sup>3</sup> EFFICACY CALCULATED USING 4000K CCT DATA.
- <sup>4</sup> MAX AMBIENT TEMP RATING, NON-IC INSTALLATION. TEMP RATING MAY VARY WITH SPECIFIED DRIVERS OR ANY NON STANDARD SELECTION
- <sup>5</sup> 90 MINUTE 10W EMERGENCY DRIVER; LUMENS CALCULATED BASED ON FIXTURE EFFICACY.

## PHOTOMETRICS

### P12 PRISMATIC OPTICS

Key:

