

Indoor Sports Troffers: IS-R-LED

1x4, 2x2 and 2x4 High Durability LED Luminaires

- Recessed housing suitable for grid or flange installation
- For handball, squash, racketball, and other indoor sports applications
- Optional "GDF" frame provides door with integral grill
- Polycarbonate lensing standard
- B.A.A. Compliant & Made in the USA by a Family Owned US Corporation



GDF Option



DISCLAIMER: Although KURTZON has prepared the information contained in this document with all due care, KURTZON does not warrant or represent that the information is free from errors or omission. While the information is considered to be true and correct at the date of publication, changes in circumstances after the time of publication may impact on the accuracy of the information. The information may change without notice and KURTZON is not in any way liable for the accuracy of any information printed and stored or in any way interpreted or used.

ORDERING GUIDE

| Series | Material | Size | Light Source | CCT/CRI | Voltage | Optics | Options |
|-------------|--|--|-------------------------------|--|--|--|--|
| IS-R | | | | | | | |
| Series | Material | Size | Light Source | CCT/CRI | Voltage | Optics | Options |
| IS-R | 3 White 430 SS Hsg. & Polished 304 SS Door | 1x4 1' x 4' Housing | 1/LEDR | 83 CRI: | 120V | P12ACR 0.135" P12 Prismatic Impact Resistant Acrylic (Inverted) | SW Wet Location Hub Supplied (not installed) |
| | | | 2/LEDR | 830 3000K | 277V | LEX 0.125" P12 Prismatic Polycarbonate (Inverted) | PxL * Programmed to User Specified Lumen Value. |
| | 4 White AL Hsg. & Polished 304 SS Door | 1x4 1' x 4' Housing | 2/LEDH | 835 3500K | UNV | A19 0.156" A19 Prismatic Impact Resistant Acrylic (Inverted) | PxW * Programmed to User Specified Wattage Value. |
| | | | 2/LEDHF | 840 4000K | 347V* | TG 0.156" Prismatic Tempered Glass (Inverted) | 10KV 10KV Parallel Surge Protection (One Supplied Per Circuit) |
| | 5 White AL Hsg. & White AL Door | 2x2 2' x 2' Housing | 2/LEDR | 850 5000K | *347V Available with 10% dimming, not all options are compatible with 347V | HIA 0.140" P12 Prismatic High Impact Resistant Acrylic (Inverted) | GTD Generator Transfer Device |
| | | 2x4 2' x 4' Housing | 2/LEDH | 90+ CRI: | | FROST 0.125" Flat Diffusing Frost Acrylic | WHIP Must Specify Length and Wire Qty |
| | 3/LEDR | | 935 3500K | | | ZDBW 0.125" Flat Diffused Acrylic with Bi-Directional Batwing distribution | OCCMW Internal microwave OCC Sensor |
| | 7 White AL Hsg. & White CRS Door | 2x4 2' x 4' Housing | 3/LEDH | 940 4000K | | LBW 0.125" Flat Diffused Acrylic with Linear Batwing Distribution | FC Fuse & Holder (One Supplied Per Circuit) |
| | | | 4/LEDR | NOTE: LEX option is standard and will be provided when no other option is selected | | GH85 0.125" Flat Diffused Acrylic with Glare Suppression Distribution | EM10** 10W Integral LED EM (Specify Input Voltage) |
| | | | 4/LEDH | | | EM20 20W Remote LED EM (Specify Input Voltage) | |
| | | | 4/LEDHF | | | EDL -40F Electronic Driver | |
| | | NOTE: Additionally available in 95+ CRI with Seoul Sun-Like LEDs. Consult factory for more information | WHT White Finished Door & HSG | | | | |
| | | | | | | | AMW Anti-Microbial White Powdercoat |
| | | | | | | | 2/ED Two Drivers/Two Circuits |
| | | | | | | | GDF CRS Door Frame with Integral Grill (2x2 or 2x4 only) |
| | | | | | | | GG 1/8" Thick Grid Gasket (Provided Loose) |

Ordering Notes, If Applicable

*Note: Specify Value in Ordering Notes Below
 **Note: EM10 remote mount for 2x2 4/LEDH & 4/LEDHF selections
 **Note: EM10 remote mount for 2x4 4/LEDHF selections.

Indoor Sports Troffers: IS-R-LED

1x4, 2x2 and 2x4 High Durability LED Luminaires

SPECIFICATIONS

HOUSING: One piece, hole free, robotically seam welded housing has flattened knockouts for a superior seal. Housings are available in .040" 3003 Aluminum or 20Ga 430 Stainless Steel.

DOOR FRAME: One piece inset door frame with seam welds regressing flush into the housing while creating a seal. Door frame is hinged by aircraft cables and secures to housing with captive stainless steel pan head screws. Available in .040" 3003 Powder coated Alum. , 20Ga 304 Polished SS, or 18Ga 1008 Powder coated CRS. Optional CRS door frame with an integral grill available for 2x2 or 2x4 housings

GASKETS: Closed cell microcellular extruded KleanLock SealPro gasket with vulcanized corners making a one-piece oil and solvent resistant gasket system. GG option provides a loose 1/8" thick adhesive backed gasket intended to adhere to the top face of a suspended grid ceiling for grid profiles that do not already have gasket on them.

OPTICS: Standard P12 prismatic Polycarbonate lens is provided when no other options are selected. All prismatic lensing options come with an inverted lens so the smooth side faces the room for easy cleaning. All optics are sealed to the door with NSF listed RTV silicone sealant. Other optics are available, consult factory for more information or options not listed.

LEDS: Commercially available in a wide variety of Color Temperature (CCT), FLUX, and CRI. Highly efficient and consistent color maintained to 3 SDMC for color critical applications. B50/L70 and compliant with Zhaga recognized hole patterns. Consult factory for LED options or configurations not listed below.

DRIVERS: Standard Universal Voltage Class 2 drivers are 0-10v Dimmable to 1%. They come with at least 2.5Kv surge protection, have less than 10% THD at max load, Ballast Factor Greater than .95 and are programmable to match specific lumen or wattage requirements. Drivers with higher input voltage ratings are available, consult factory for driver specifications.

REFLECTOR: Die formed metal with high reflectance white polyester powder coat finish. Typical reflectivity 92%.

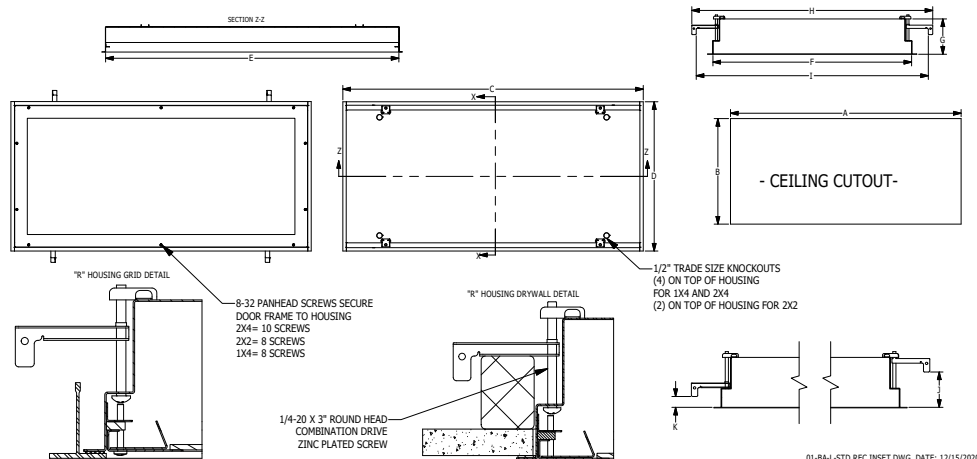
INSTALLATION: Suitable for recessed Non-IC installation into covered ceilings. Fixtures are supplied with .875" flattened knockouts for supply entry. Recessed housings have (4) swing out toggle arms that are used to draw the fixture in to the ceiling for hard lid installation without the need for a yoke hanger. The toggle arm adjuster bolts are accessible from the room side of the luminaire and the actual toggles can be used as means of establishing a seismic support for lay in ceiling installations. Confirm ceiling compatibility with dimension drawings below.

FINISH: Stainless steel door frames are satin polished unless WHT or AMW options are selected. All other materials are provided with gloss high reflectance white polyester powdercoat with 1000hr salt spray test per ASTM B117. AMW option provides a white anti-microbial polyester powder coat to all exposed surfaces.

LISTINGS: IP65 rated for dust and water ingress. Suitable for 1700 PSI high pressure hosedowns. ETL listed per UL_1598 for wet locations. Chicago Plenum Rated. Drivers and LEDs are covered by a 5 year warranty, the remaining fixture is covered by a 10 year warranty.

PRODUCT DRAWINGS

| "R" HOUSING REFERENCE DIMENSIONS | | | | | | | | | | | |
|----------------------------------|--------|--------|--------|--------|--------|--------|-------|--------|--------|-------|-------|
| SIZE | A | B | C | D | E | F | G | H | I | J | K |
| 1X4 | 47.00" | 11.00" | 47.63" | 11.69" | 46.50" | 10.50" | 4.00" | 15.27" | 14.27" | 2.81" | 0.86" |
| 2X2 | 23.00" | 23.00" | 23.63" | 23.69" | 22.50" | 22.50" | 4.00" | 27.31" | 26.31" | 2.81" | 0.86" |
| 2X4 | 47.00" | 23.00" | 47.63" | 23.69" | 46.50" | 22.50" | 4.00" | 27.31" | 26.31" | 2.81" | 0.86" |



Indoor Sports Troffers: IS-R-LED

1x4, 2x2 and 2x4 High Durability LED Luminaires

ENERGY DATA

| POLY INSET-FGRS-LED TROFFER (APPROX ¹ LUMENS DELIVERED) | | | | | | | | | | |
|--|---------------|------------------------|--------------------|-----------------------|--------------|-----------------------|--------------------|-----------------------|---------------------------|------------------|
| ENCLOSURE SIZE | LIGHT PACKAGE | 80 CRI (3000K - 5000K) | | | | 90 CRI (3500K, 4000K) | | | | STANDARD DIMMING |
| | | LUMENS | WATTS ² | EFFICACY ³ | MAX AMB TEMP | LUMENS | WATTS ² | EFFICACY ³ | MAX AMB TEMP ⁴ | |
| 1X4 | 1LED R | 2,731 | 29 | 94 | 45°C (113°F) | 2,632 | 29 | 91 | 45°C (113°F) | 0-10V 1% |
| 1X4 | 2LED R | 5,460 | 55 | 99 | 45°C (113°F) | 5,263 | 56 | 94 | 45°C (113°F) | 0-10V 1% |
| 1X4 | 2LED H | 10,579 | 109 | 97 | 35°C (95°F) | 10,103 | 109 | 93 | 35°C (95°F) | 0-10V 1% |
| 1X4 | 2LED HF | 15,611 | 153 | 102 | 35°C (95°F) | 13,009 | 183 | 71 | 35°C (95°F) | 0-10V 1% |
| 1X4 | EM10 | 940-1020 | 4 | NA | 40°C (104°F) | 710-940 | 4 | NA | 40°C (104°F) | NA |
| 2X2 | 2LED R | 2,717 | 29 | 94 | 45°C (113°F) | 2,622 | 29 | 90 | 45°C (113°F) | 0-10V 1% |
| 2X2 | 3LED R | 4,076 | 42 | 97 | 45°C (113°F) | 3,932 | 42 | 94 | 45°C (113°F) | 0-10V 1% |
| 2X2 | 2LED H | 5,346 | 55 | 97 | 40°C (104°F) | 5,097 | 55 | 93 | 40°C (104°F) | 0-10V 1% |
| 2X2 | 4LED R | 5,435 | 55 | 99 | 45°C (113°F) | 5,243 | 56 | 94 | 45°C (113°F) | 0-10V 1% |
| 2X2 | 3LED H | 8,020 | 80 | 100 | 40°C (104°F) | 7,648 | 81 | 95 | 35°C (95°F) | 0-10V 1% |
| 2X2 | 4LED H | 10,693 | 109 | 98 | 40°C (104°F) | 10,194 | 109 | 94 | 35°C (95°F) | 0-10V 1% |
| 2X2 | 4LED HF | 16,244 | 153 | 106 | 35°C (95°F) | 13,437 | 184 | 73 | 35°C (95°F) | 0-10V 1% |
| 2X2 | EM10 | 940-1060 | 4 | NA | 40°C (104°F) | 730-950 | 4 | NA | 40°C (104°F) | NA |
| 2X4 | 2LED R | 5,912 | 55 | 107 | 45°C (113°F) | 5,657 | 56 | 101 | 45°C (113°F) | 0-10V 1% |
| 2X4 | 3LED R | 8,868 | 83 | 107 | 45°C (113°F) | 8,485 | 83 | 102 | 45°C (113°F) | 0-10V 1% |
| 2X4 | 2LED H | 11,670 | 109 | 107 | 40°C (104°F) | 11,089 | 109 | 102 | 40°C (104°F) | 0-10V 1% |
| 2X4 | 4LED R | 11,824 | 111 | 107 | 45°C (113°F) | 11,313 | 113 | 100 | 45°C (113°F) | 0-10V 1% |
| 2X4 | 3LED H | 17,505 | 164 | 107 | 40°C (104°F) | 16,634 | 164 | 101 | 40°C (104°F) | 0-10V 1% |
| 2X4 | 4LED H | 23,339 | 220 | 106 | 40°C (104°F) | 22,178 | 220 | 101 | 40°C (104°F) | 0-10V 1% |
| 2X4 | 4LED HF | 35,851 | 305 | 118 | 35°C (95°F) | 31,103 | 373 | 83 | 35°C (95°F) | 0-10V 1% |
| 2X4 | EM10 | 1060-1180 | 4 | NA | 40°C (104°F) | 830-1020 | 4 | NA | 40°C (104°F) | NA |

- ¹ DELIVERED LUMEN DATA IS EXTRAPOLATED FROM MEASURED DATA @25C WITH NO EXTRA OPTIONS. VARIANCES WILL OCCUR WHEN OPTIONS ARE CHOSEN
- ² WATTAGE IS MEASURED WITH 4000K SELECTION @ 120vAC AND Tambient = 25C. WATTAGES MAY VARY WITH ALTERNATE CONFIGURATIONS
- ³ EFFICACY CALCULATED USING 4000K CCT DATA.
- ⁴ MAX AMBIENT TEMP RATING, NON-IC INSTALLATION. TEMP RATING MAY VARY WITH SPECIFIED DRIVERS OR ANY NON STANDARD SELECTION
- ⁵ 90 MINUTE 10W EMERGENCY DRIVER; LUMENS CALCULATED BASED ON FIXTURE EFFICACY.

PHOTOMETRICS

P12 PRISMATIC OPTICS

Key:

