

Hazardous X12 TL Troffers: TLX12-R-LED

1x4, 2x2 and 2x4 Hazardous Location LED Luminaires

- **Suitable For Use In Class 1 Division 2 Groups A, B, C, & D Installations**
- **IP65 Rating**
- **ETL listed for wet locations**
- **Recessed housing suitable for tbar grid and hardlid ceiling installations**
- **0-10V dimming down to 10% standard**
- **Made in the USA by a Family Owned US Corporation**



DISCLAIMER: Although KURTZON has prepared the information contained in this document with all due care, KURTZON does not warrant or represent that the information is free from errors or omission. While the information is considered to be true and correct at the date of publication, changes in circumstances after the time of publication may impact on the accuracy of the information. The information may change without notice and KURTZON is not in any way liable for the accuracy of any information printed and stored or in any way interpreted or used.

ORDERING GUIDE

Series	Material	Size	Light Source	CCT/CRI	Voltage	Optics	Options	
TLX12-R	3 White 430 SS Hsg. & Polished 304 SS Door	1x4 1' x 4' Housing	2 LEDR	80 CRI:	120V	P12ACR 0.135" P12 Prismatic Impact Resistant Acrylic (Inverted)	H/FC Fuse & Holder (One Supplied Per Circuit)	
	4 White AL Hsg. & Polished 304 SS Door		2 LEDH	830 3000K CCT	277V	LEX 0.125" P12 Prismatic Polycarbonate (Inverted)	2/ED Two Drivers (Two Circuits)	
	5 White AL Hsg. & White AL Door	2x2 2' x 2' Housing	2 LEDR	835 3500K CCT	UNV	A19 0.156" A19 Prismatic Impact Resistant Acrylic (Inverted)	EDL -40F Electronic Driver	
	7 White AL Hsg. & White CRS Door			840 4000K CCT		TG 0.156" Prismatic Tempered Glass (Inverted)	H/EM** 10W Integral LED EM (Specify Input Voltage)	
			2x4 2' x 4' Housing	2 LEDH	850 5000K CCT		HIA 0.140" P12 Prismatic High Impact Resistant Acrylic (Inverted)	WHT White Finished Door & HSG
				3 LEDR	90 CRI:		FROST 0.125" Flat Diffusing Frost Acrylic	PxL* Programmed to User Specified Lumen Value
				3 LEDH			2DBW 0.125" Flat Diffused Acrylic with Bi-Directional Batwing Distribution	PxW* Programmed to User Specified Wattage Value
				4 LEDR			935 3500K CCT	LBW 0.125" Flat Diffused Acrylic with Linear Batwing Distribution
					940 4000K CCT		GH85 0.125" Flat Diffused Acrylic with Glare Suppression Distribution	AMW Anti-Microbial White Powdercoat
								GG 1/8" Thick Grid Gasket (Provided Loose)

NOTE: P12ACR option is standard and will be provided when no other option is selected

Note: * Specify value in ordering notes below
** H/EM not available for 2x2 with 2/ED option

Ordering Notes, If Applicable

Hazardous X12 TL Troffers: TLX12-R-LED

1x4, 2x2 and 2x4 Hazardous Location LED Luminaires

SPECIFICATIONS

HOUSING: One piece, hole free, robotically seam welded housing has flattened, silicone sealed knockouts for a superior seal. Housings are available in .040" 3003 Aluminum or 20Ga 430 Stainless Steel.

DOOR FRAME: One piece inset door frame with seam welds regressing into housing to allowing the NSF approved microcellular gasket to seal to the housing. Door frame is hinged by aircraft cables and secures to housing with captive stainless steel pan head screws. Available in .040" 3003 Powder coated Alum. , 20Ga 304 Polished SS, or 18Ga 1008 Powder coated CRS.

GASKETS: NSF Listed closed cell microcellular extruded KleanLock SealPro gasket with vulcanized corners making a one-piece oil and solvent resistant gasket system. GG option provides a loose 1/8" thick adhesive backed gasket intended to adhere to the top face of a suspended grid ceiling for grid profiles that do not already have gasket on them.

OPTICS: Standard P12 prismatic acrylic lens is provided when no other options are selected. All prismatic lensing options come with an inverted lens so the smooth side faces the room for easy cleaning. All optics are sealed to the door with NSF listed RTV silicone sealant. Other optics are available, consult factory for more information or options not listed.

LEDS: Commercially available in a wide variety of Color Temperature (CCT), FLUX, and CRI. Highly efficient and consistent color maintained to 3 SDMC for color critical applications. B50/L70 and compliant with Zhaga recognized hole patterns. Consult factory for LED options or configurations not listed below.

DRIVERS: Standard Universal Voltage Class 2 drivers are 0-10v Dimmable to 10%. They come with at least 2.5Kv surge protection, have less than 10% THD at max load, Ballast Factor Greater than .95 and are programmable to match specific lumen or wattage requirements. Drivers with higher input voltage ratings are available, consult factory for driver specifications.

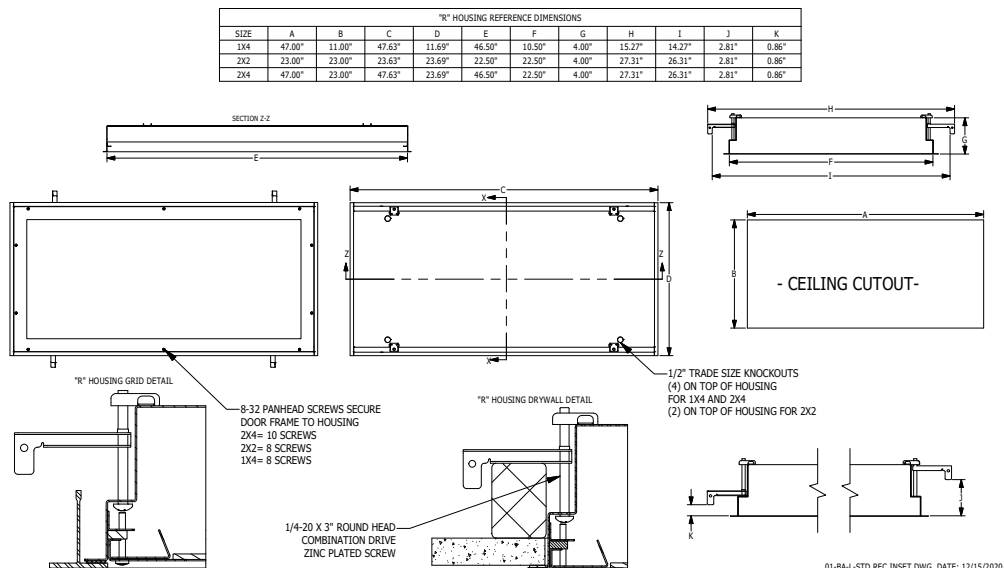
REFLECTOR: Die formed metal with high reflectance white polyester powder coat finish. Typical reflectivity 92%.

INSTALLATION: Suitable for recessed Non-IC installation into covered ceilings. Fixtures are supplied with .875" flattened knockouts for supply entry. Recessed housings have (4) swing out toggle arms that are used to draw the fixture in to the ceiling for hard lid installation without the need for a yoke hanger. The toggle arm adjuster bolts are accessible from the room side of the luminaire and the actual toggles can be used as means of establishing a seismic support for lay in ceiling installations. Confirm ceiling compatibility with dimension drawings below.

FINISH: Stainless steel door frames are satin polished unless WHT or AMW options are selected. All other materials are provided with gloss high reflectance white polyester powdercoat with 1000hr salt spray test per ASTM B117. AMW option provides a white anti-microbial polyester powder coat to all exposed surfaces.

LISTINGS: Listed for Class I Division II Groups A,B,C & D hazardous locations. IP65 rated for dust and water ingress. Suitable for 1700 PSI high pressure hosedowns. ETL listed per UL_1598 for wet locations. Chicago Plenum Rated. Certified ISO-14644-1 for class 3 through class 9 cleanspaces. Certified Fed Std 209E for Class 100 through Class 100,000 cleanspaces. NSF2 Listed for Non-Food and Splash Zones. Drivers and LEDs are covered by a 5 year warranty, the remaining fixture is covered by a 10 year warranty.

PRODUCT DRAWINGS



Hazardous X12 TL Troffers: TLX12-R-LED

1x4, 2x2 and 2x4 Hazardous Location LED Luminaires

ENERGY DATA

HAZ CLASS 1 DIVISION 2 SURFACE & RECESSED INSET LED TROFFER (APPROX ¹ LUMENS DELIVERED)											
ENCLOSURE SIZE	LIGHT PACKAGE	80 CRI (3000K - 5000K)				90 CRI (3500K, 4000K)				HAZ LOCATION TEMP CODE	STANDARD DIMMING
		LUMENS	WATTS ²	EFFICACY ³	MAX AMB TEMP	LUMENS	WATTS ²	EFFICACY ³	MAX AMB TEMP ⁴		
1X4	1LEDR	3,034	29	105	40°C (104°F)	2,924	29	101	40°C (104°F)	T4A	0-10V 10%
1X4	2LEDR	6,067	55	110	40°C (104°F)	5,848	56	105	40°C (104°F)	T4A	0-10V 10%
1X4	2LEDH	11,754	109	108	35°C (95°F)	11,228	109	105	35°C (95°F)	T4A	0-10V 10%
2X2	2LEDR	2,986	29	103	40°C (104°F)	2,881	29	99	40°C (104°F)	T4A	0-10V 10%
2X2	3LEDR	4,479	42	107	40°C (104°F)	4,321	42	103	40°C (104°F)	T4A	0-10V 10%
2X2	2LEDH	5,875	55	107	40°C (104°F)	5,601	55	102	40°C (104°F)	T4A	0-10V 10%
2X2	4LEDR	5,970	55	109	40°C (104°F)	5,761	56	103	40°C (104°F)	T4A	0-10V 10%
2X2	3LEDH	8,813	80	110	40°C (104°F)	8,402	81	104	35°C (95°F)	T4A	0-10V 10%
2X4	2LEDR	6,718	55	122	40°C (104°F)	6,428	56	115	40°C (104°F)	T4A	0-10V 10%
2X4	3LEDR	10,077	83	122	40°C (104°F)	9,642	83	116	40°C (104°F)	T4A	0-10V 10%
2X4	2LEDH	13,261	109	122	40°C (104°F)	12,601	109	116	40°C (104°F)	T4A	0-10V 10%
2X4	4LEDR	13,436	111	121	40°C (104°F)	12,856	113	114	40°C (104°F)	T4A	0-10V 10%
2X4	3LEDH	19,892	165	121	40°C (104°F)	18,902	165	115	40°C (104°F)	T4A	0-10V 10%

- ¹ DELIVERED LUMEN DATA IS EXTRAPOLATED FROM MEASURED DATA @25C WITH NO EXTRA OPTIONS. VARIANCES WILL OCCUR WHEN OPTIONS ARE CHOSEN
- ² WATTAGE IS MEASURED WITH 4000K SELECTION @ 120vAC AND Tambient = 25C. WATTAGES MAY VARY WITH ALTERNATE CONFIGURATIONS
- ³ EFFICACY CALCULATED USING 4000K CCT DATA.
- ⁴ MAX AMBIENT TEMP RATING AS SPECIFIED ON SAFETY REPORT, NON-IC INSTALLATION.

PHOTOMETRICS

P12 PRISMATIC

Key:

