

Hazardous X12 KL Troffers: KLX12-S-LED

1x4, 2x2 and 2x4 Hazardous Location LED Luminaires

- **Suitable For Use In Class 1 Division 2 Groups A, B, C, & D Installations**
- **IP66 rating**
- **ETL listed for wet locations**
- **0-10V dimming to 5% standard**
- **B.A.A. & B.A.B.A Compliant & Made in the USA by a Family Owned US Corporation**



DISCLAIMER: Although KURTZON has prepared the information contained in this document with all due care, KURTZON does not warrant or represent that the information is free from errors or omission. While the information is considered to be true and correct at the date of publication, changes in circumstances after the time of publication may impact on the accuracy of the information. The information may change without notice and KURTZON is not in any way liable for the accuracy of any information printed and stored or in any way interpreted or used.

ORDERING GUIDE

Series	Material	Size	Light Source	CCT/CRI	Voltage	Optics	Options	
KLX12-S								
Series	Material	Size	Light Source	CCT/CRI	Voltage	Optics	Options	
KLX12-S	1 White CRS Hsg. & White CRS Door	1x4 1' x 4' Housing	2 LEDR	80 CRI:	120V	P12ACR 0.135" P12 Prismatic Impact Resistant Acrylic (Inverted)	H/FC Fuse & Holder (One Supplied Per Circuit)	
	2 White CRS Hsg. & Polished 304 SS Door		2 LEDH	830 3000K CCT	277V	LEX 0.125" P12 Prismatic Polycarbonate (Inverted)	2/ED Two Drivers (Two Circuits)	
	3 Polished 304 SS Hsg. & Polished 304 SS Door			835 3500K CCT	UNV	A19 0.156" A19 Prismatic Impact Resistant Acrylic (Inverted)	EDL -40F Electronic Driver	
	4 White AL Hsg. & Polished 304 SS Door	2x2 2' x 2' Housing	2 LEDR	840 4000K CCT		TG 0.156" Prismatic Tempered Glass (Inverted)	H/EM** 10W Integral LED EM (Specify Input Voltage)	
	5 White AL Hsg. & White AL Door	2x4 2' x 4' Housing	2 LEDH	850 5000K CCT		HIA 0.140" P12 Prismatic High Impact Resistant Acrylic (Inverted)	WHT White Finished Door & HSG	
	6 White CRS Hsg. & White AL Door		3 LEDR	90 CRI:		FROST 0.125" Flat Diffusing Frost Acrylic	PxL* Programmed to User Specified Lumen Value	
	7 White AL Hsg. & White CRS Door		3 LEDH			2DBW 0.125" Flat Diffused Acrylic with Bi-Directional Batwing Distribution	PxW* Programmed to User Specified Wattage Value	
			4 LEDR	935 3500K CCT		LBW 0.125" Flat Diffused Acrylic with Linear Batwing Distribution	WHIP Must Specify Length and Wire Qty	
				940 4000K CCT		GH85 0.125" Flat Diffused Acrylic with Glare Suppression Distribution	AMW Anti-Microbial White Powdercoat	
NOTE: P12ACR option is standard and will be provided when no other option is selected						Note: * Specify value in ordering notes below ** H/EM not available for 2x2 with 2/ed option		

NOTE: P12ACR option is standard and will be provided when no other option is selected

Note: * Specify value in ordering notes below
** H/EM not available for 2x2 with 2/ed option

Ordering Notes, If Applicable

Hazardous X12 KL Troffers: KLX12-S-LED

1x4, 2x2 and 2x4 Hazardous Location LED Luminaires

SPECIFICATIONS

HOUSING: One piece, hole free, robotically seam welded housing has flattened, silicone sealed knockouts for a superior seal. Housings are available in .040" 3003 Aluminum, 20Ga 304 Stainless Steel, or 20Ga 1008 Cold Rolled Steel.

DOORFRAME: One piece door frame with welded corners overlaps the fixture allowing the NSF approved microcellular gasket to seal to the mounting surface. Door frame is hinged by aircraft cables and is supplied with captive stainless steel flush head screws to allow easy wiping of the surface. Available in .050" 3003 Powder coated Alum., 20Ga 304 Polished SS, or 18Ga Powder coated CRS

GASKETS: NSF Listed closed cell microcellular extruded KleanLock SealPro gasket with vulcanized corners making a one-piece oil and solvent resistant gasket system.

OPTICS: Standard P12 prismatic acrylic lens is provided when no other options are selected. All prismatic lensing options come with an inverted lens so the smooth side faces the room for easy cleaning. All optics are sealed to the door with NSF listed RTV silicone sealant. Other optics are available, consult factory for more information or options not listed.

LEDS: Commercially available in a wide variety of Color Temperature (CCT), FLUX, and CRI. Highly efficient and consistent color maintained to 3 SDMC for color critical applications. B50/L70 and compliant with Zhaga recognized hole patterns. Consult factory for LED options or configurations not listed below.

DRIVERS: Standard Universal Voltage Class 2 drivers are 0-10v Dimmable to 5%. They come with at least 2.5Kv surge protection, have less than 10% THD at max load, Ballast Factor Greater than .95 and are programmable to match specific lumen or wattage requirements. Drivers with higher input voltage ratings are available, consult factory for driver specifications.

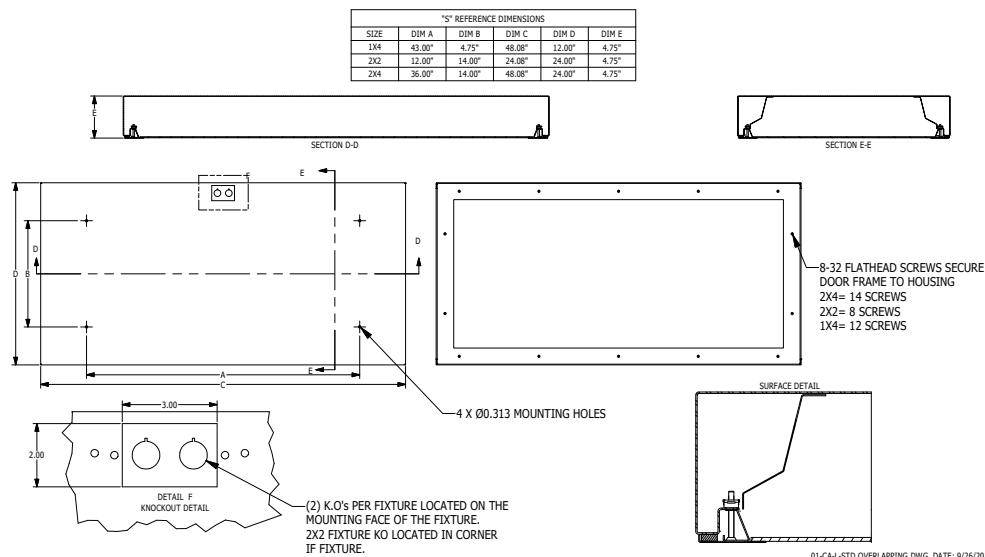
REFLECTOR: Die formed metal with high reflectance white polyester powder coat finish. Typical reflectivity 92%.

INSTALLATION: Four .312" dia. mounting holes and a removable gasketed wiring access plate with Supply entry via 1/2" trade size flattened knockouts. Suitable for surface installation onto covered ceilings only.

FINISH: Stainless steel door frames & housings are satin polished unless WHT or AMW options are selected. All other materials are provided with gloss high reflectance white polyester powder coat with 1000hr salt spray test per ASTM B117. AMW option provides a white anti-microbial polyester powder coat to all exposed surfaces.

LISTINGS: Listed for Class I Division II Groups A,B,C & D hazardous locations. IP66 rated for dust and water ingress. Suitable for 1700 PSI high pressure hosedowns. ETL listed per UL_1598 for wet locations. Certified ISO-14644-1 for class 3 through class 9 cleanspaces. Certified Fed Std 209E for Class 1 through Class 100,000 cleanspaces. NSF2 Listed for Non-Food and Splash Zones. Drivers and LEDs are covered by a 5 year warranty, the remaining fixture is covered by a 10 year warranty. This product Series is both Build America Buy America (B.A.B.A.) & Buy American Act (B.A.A.) compliant.

PRODUCT DRAWINGS



Hazardous X12 KL Troffers: KLX12-S-LED

1x4, 2x2 and 2x4 Hazardous Location LED Luminaires

ENERGY DATA

HAZ CLASS 1 DIVISION 2 SURFACE & RECESSED OVERLAP LED TROFFER (APPROX ¹ LUMENS DELIVERED)											
ENCLOSURE SIZE	LIGHT PACKAGE	83 CRI (3000K - 5000K)				90 CRI (3500K, 4000K)				HAZ LOCATION TEMP CODE	STANDARD DIMMING
		LUMENS	WATTS ²	EFFICACY ³	MAX AMB TEMP	LUMENS	WATTS ²	EFFICACY ³	MAX AMB TEMP ⁴		
1X4	1LED R	2,974	29	103	40°C (104°F)	2,868	29	99	40°C (104°F)	T4A	0-10V 5%
1X4	2LED R	5,948	55	108	40°C (104°F)	5,736	56	103	40°C (104°F)	T4A	0-10V 5%
1X4	2LEDH	11,493	109	106	35°C (95°F)	10,980	109	101	35°C (95°F)	T4A	0-10V 5%
2X2	2LED R	3,165	29	109	40°C (104°F)	3,042	29	105	40°C (104°F)	T4A	0-10V 5%
2X2	3LED R	4,747	42	113	40°C (104°F)	4,563	42	109	40°C (104°F)	T4A	0-10V 5%
2X2	2LEDH	6,213	55	113	40°C (104°F)	5,928	55	108	40°C (104°F)	T4A	0-10V 5%
2X2	4LED R	6,328	55	115	40°C (104°F)	6,084	55	111	40°C (104°F)	T4A	0-10V 5%
2X2	3LEDH	9,319	80	116	40°C (104°F)	8,892	81	110	35°C (95°F)	T4A	0-10V 5%
2X4	2LED R	6,864	55	125	40°C (104°F)	6,567	56	117	40°C (104°F)	T4A	0-10V 5%
2X4	3LED R	10,295	83	124	40°C (104°F)	9,851	83	119	40°C (104°F)	T4A	0-10V 5%
2X4	2LEDH	13,488	109	124	40°C (104°F)	12,816	109	118	40°C (104°F)	T4A	0-10V 5%
2X4	4LED R	13,726	111	124	40°C (104°F)	13,134	113	116	40°C (104°F)	T4A	0-10V 5%
2X4	3LEDH	20,233	165	123	40°C (104°F)	19,224	165	117	40°C (104°F)	T4A	0-10V 5%

- ¹ DELIVERED LUMEN DATA IS EXTRAPOLATED FROM MEASURED DATA @25C WITH NO EXTRA OPTIONS. VARIANCES WILL OCCUR WHEN OPTIONS ARE CHOSEN
- ² WATTAGE IS MEASURED WITH 4000K SELECTION @ 120VAC AND Tambient = 25C. WATTAGES MAY VARY WITH ALTERNATE CONFIGURATIONS
- ³ EFFICACY CALCULATED USING 4000K CCT DATA.
- ⁴ MAX AMBIENT TEMP RATING AS SPECIFIED ON SAFETY REPORT, NON-IC INSTALLATION.

PHOTOMETRICS

P12 PRISMATIC

Key:

— 0
- - - 45
— 90

