

# Hazardous X12 KL Troffers: KLX12-R-LED

1x4, 2x2 and 2x4 Hazardous Location LED Luminaires

- Suitable For Use In Class 1 Division 2 Groups A, B, C, & D Installations
- IP66 rating
- ETL listed for wet locations
- Recessed housing suitable for tbar grid and hardlid installations
- 0-10V dimming to 5% standard
- B.A.A. & B.A.B.A Compliant & Made in the USA by a Family Owned US Corporation



DISCLAIMER: Although KURTZON has prepared the information contained in this document with all due care, KURTZON does not warrant or represent that the information is free from errors or omission. While the information is considered to be true and correct at the date of publication, changes in circumstances after the time of publication may impact on the accuracy of the information. The information may change without notice and KURTZON is not in any way liable for the accuracy of any information printed and stored or in any way interpreted or used.



## ORDERING GUIDE

Series	Material	Size	Light Source	CCT/CRI	Voltage	Optics	Options
<b>KLX12-R</b>							
<b>KLX12-R</b>	3 White 430 SS Hsg. & Polished 304 SS Door	1x4 1' x 4' Housing	2 LEDR	80 CRI:	120V	P12ACR 0.135" P12 Prismatic Impact Resistant Acrylic (Inverted)	H/FC Fuse & Holder (One Supplied Per Circuit)
	4 White AL Hsg. & Polished 304 SS Door		2 LEDH	830 3000K CCT	277V	LEX 0.125" P12 Prismatic Polycarbonate (Inverted)	2/ED Two Drivers (Two Circuits)
	5 White AL Hsg. & White AL Door			835 3500K CCT	UNV	A19 0.156" A19 Prismatic Impact Resistant Acrylic (Inverted)	EDL -40F Electronic Driver
	7 White AL Hsg. & White CRS Door	2x2 2' x 2' Housing	2 LEDR	840 4000K CCT		TG 0.156" Prismatic Tempered Glass (Inverted)	H/EM** 10W Integral LED EM (Specify Input Voltage)
		2x4 2' x 4' Housing	2 LEDH	850 5000K CCT		HIA 0.140" P12 Prismatic High Impact Resistant Acrylic (Inverted)	WHT White Finished Door & HSG
			3 LEDR			FROST 0.125" Flat Diffusing Frost Acrylic	PxL* Programmed to User Specified Lumen Value
			3 LEDH	90 CRI:		2DBW 0.125" Flat Diffused Acrylic with Bi-Directional Batwing Distribution	PxW* Programmed to User Specified Wattage Value
			4 LEDR	935 3500K CCT		LBW 0.125" Flat Diffused Acrylic with Linear Batwing Distribution	WHIP Must Specify Length and Wire Qty
				940 4000K CCT		GH85 0.125" Flat Diffused Acrylic with Glare Suppression Distribution	AMW Anti-Microbial White Powdercoat
							GG 1/8" Thick Grid Gasket (Provided Loose)
						NOTE: P12ACR option is standard and will be provided when no other option is selected	
						Note: * Specify value in ordering notes below ** H/EM not available for 2x2 with 2/ed option	

Ordering Notes, If Applicable

# Hazardous X12 KL Troffers: KLX12-R-LED

1x4, 2x2 and 2x4 Hazardous Location LED Luminaires

## SPECIFICATIONS

**HOUSING:** One piece, hole free, robotically seam welded housing has flattened, silicone sealed knockouts for a superior seal. Housings are available in .040" 3003 Aluminum or 20Ga 430 Stainless Steel.

**DOORFRAME:** One piece door frame with welded corners overlaps the fixture allowing the NSF approved microcellular gasket to seal to the mounting surface. Door frame is hinged by aircraft cables and is supplied with captive stainless steel flush head screws to allow easy wiping of the surface. Available in .050" 3003 Powder coated Alum. , 20Ga 304 Polished SS, or 18Ga Powder coated CRS

**GASKETS:** NSF Listed closed cell microcellular extruded KleanLock SealPro gasket with vulcanized corners making a one-piece oil and solvent resistant gasket system. GG option provides a loose 1/8" thick adhesive backed gasket intended to adhere to the top face of a suspended grid ceiling for grid profiles that do not already have gasket on them.

**OPTICS:** Standard P12 prismatic acrylic lens is provided when no other options are selected. All prismatic lensing options come with an inverted lens so the smooth side faces the room for easy cleaning. All optics are sealed to the door with NSF listed RTV silicone sealant. Other optics are available, consult factory for more information or options not listed.

**LEDS:** Commercially available in a wide variety of Color Temperature (CCT), FLUX, and CRI. Highly efficient and consistent color maintained to 3 SDMC for color critical applications. B50/L70 and compliant with Zhaga recognized hole patterns. Consult factory for LED options or configurations not listed below.

**DRIVERS:** Standard Universal Voltage Class 2 drivers are 0-10v Dimmable to 5%. They come with at least 2.5Kv surge protection, have less than 10% THD at max load, Ballast Factor Greater than .95 and are programmable to match specific lumen or wattage requirements. Drivers with higher input voltage ratings are available, consult factory for driver specifications.

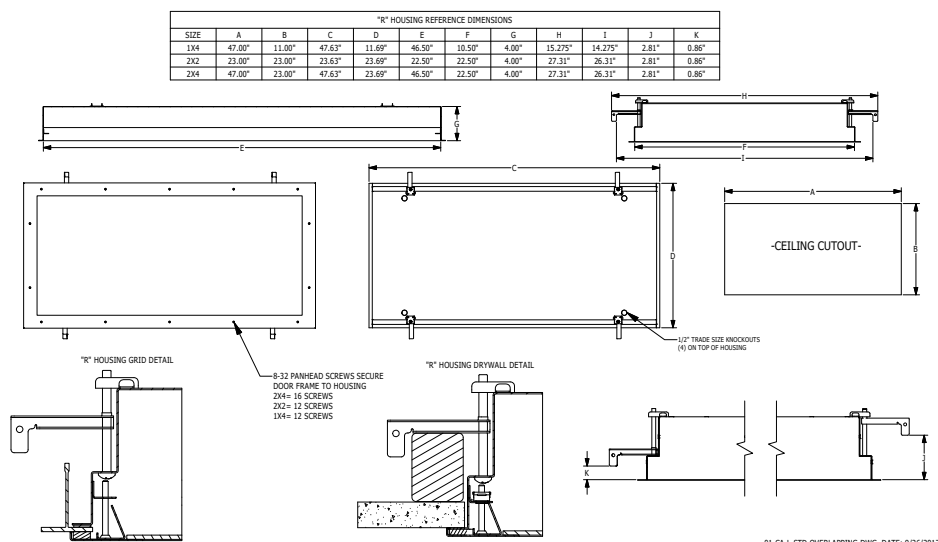
**REFLECTOR:** Die formed metal with high reflectance white polyester powder coat finish. Typical reflectivity 92%.

**INSTALLATION:** Suitable for recessed Non-IC installation into covered ceilings. Fixtures are supplied with .875" flattened knockouts for supply entry. Recessed housings have (4) swing out toggle arms that are used to draw the fixture in to the ceiling for hard lid installation without the need for a yoke hanger. The toggle arm adjuster bolts are accessible from the room side of the luminaire and the actual toggles can be used as means of establishing a seismic support for lay in ceiling installations. Confirm ceiling compatibility with dimension drawings below.

**FINISH:** Stainless steel door frames are satin polished unless WHT or AMW options are selected. All other materials are provided with gloss high reflectance white polyester powdercoat with 1000hr salt spray test per ASTM B117. AMW option provides a white anti-microbial polyester powder coat to all exposed surfaces.

**LISTINGS:** Listed for Class I Division II Groups A,B,C & D hazardous locations. IP66 rated for dust and water ingress. Suitable for 1700 PSI high pressure hosedowns. ETL listed per UL\_1598 for wet locations. Chicago Plenum Rated. Certified ISO-14644-1 for class 3 through class 9 cleanspaces. Certified Fed Std 209E for Class 1 through Class 100,000 cleanspaces. NSF2 listed for non-food and splash zones. Drivers and LEDs are covered by a 5 year warranty, the remaining fixture is covered by a 10 year warranty. This product Series is both Build America Buy America (B.A.B.A.) & Buy American Act (B.A.A.) compliant.

## PRODUCT DRAWINGS



# Hazardous X12 KL Troffers: KLX12-R-LED

1x4, 2x2 and 2x4 Hazardous Location LED Luminaires

## ENERGY DATA

HAZ CLASS 1 DIVISION 2 SURFACE & RECESSED OVERLAP LED TROFFER (APPROX <sup>1</sup> LUMENS DELIVERED)											
ENCLOSURE SIZE	LIGHT PACKAGE	83 CRI (3000K - 5000K)				90 CRI (3500K, 4000K)				HAZ LOCATION TEMP CODE	STANDARD DIMMING
		LUMENS	WATTS <sup>2</sup>	EFFICACY <sup>3</sup>	MAX AMB TEMP	LUMENS	WATTS <sup>2</sup>	EFFICACY <sup>3</sup>	MAX AMB TEMP <sup>4</sup>		
1X4	1LEDR	2,974	29	103	40°C (104°F)	2,868	29	99	40°C (104°F)	T4A	0-10V 5%
1X4	2LEDR	5,948	55	108	40°C (104°F)	5,736	56	103	40°C (104°F)	T4A	0-10V 5%
1X4	2LEDH	11,493	109	106	35°C (95°F)	10,980	109	101	35°C (95°F)	T4A	0-10V 5%
2X2	2LEDR	3,165	29	109	40°C (104°F)	3,042	29	105	40°C (104°F)	T4A	0-10V 5%
2X2	3LEDR	4,747	42	113	40°C (104°F)	4,563	42	109	40°C (104°F)	T4A	0-10V 5%
2X2	2LEDH	6,213	55	113	40°C (104°F)	5,928	55	108	40°C (104°F)	T4A	0-10V 5%
2X2	4LEDR	6,328	55	115	40°C (104°F)	6,084	55	111	40°C (104°F)	T4A	0-10V 5%
2X2	3LEDH	9,319	80	116	40°C (104°F)	8,892	81	110	35°C (95°F)	T4A	0-10V 5%
2X4	2LEDR	6,864	55	125	40°C (104°F)	6,567	56	117	40°C (104°F)	T4A	0-10V 5%
2X4	3LEDR	10,295	83	124	40°C (104°F)	9,851	83	119	40°C (104°F)	T4A	0-10V 5%
2X4	2LEDH	13,488	109	124	40°C (104°F)	12,816	109	118	40°C (104°F)	T4A	0-10V 5%
2X4	4LEDR	13,726	111	124	40°C (104°F)	13,134	113	116	40°C (104°F)	T4A	0-10V 5%
2X4	3LEDH	20,233	165	123	40°C (104°F)	19,224	165	117	40°C (104°F)	T4A	0-10V 5%

<sup>1</sup> DELIVERED LUMEN DATA IS EXTRAPOLATED FROM MEASURED DATA @ 25°C WITH NO EXTRA OPTIONS. VARIANCES WILL OCCUR WHEN OPTIONS ARE CHOSEN

<sup>2</sup> WATTAGE IS MEASURED WITH 4000K SELECTION @ 120VAC AND Tambient = 25°C. WATTAGES MAY VARY WITH ALTERNATE CONFIGURATIONS

<sup>3</sup> EFFICACY CALCULATED USING 4000K CCT DATA.

<sup>4</sup> MAX AMBIENT TEMP RATING AS SPECIFIED ON SAFETY REPORT, NON-IC INSTALLATION.

## PHOTOMETRICS

### P12 PRISMATIC

Key:

— 0  
- - - 45  
— 90

