

# Hazardous X12 EL Troffers: ELX12-R-LED

1x4, 2x2 and 2x4 Hazardous Location LED Luminaires

- Suitable For Use In Class 1 Division 2 Groups A, B, C, & D Installations
- IP55 Rating
- ETL listed for wet locations
- Recessed housing suitable for Tbar grid and hardlid installations.
- 0-10V dimming to 10% standard
- B.A.A. Compliant & Made in the USA by a Family Owned US Corporation



DISCLAIMER: Although KURTZON has prepared the information contained in this document with all due care, KURTZON does not warrant or represent that the information is free from errors or omission. While the information is considered to be true and correct at the date of publication, changes in circumstances after the time of publication may impact on the accuracy of the information. The information may change without notice and KURTZON is not in any way liable for the accuracy of any information printed and stored or in any way interpreted or used.

## ORDERING GUIDE

Series	Material	Size	Light Source	CCT/CRI	Voltage	Optics	Options
ELX12-R	3 White 430 SS Hsg. & Polished 304 SS Door	1x4 1' x 4' Housing	2 LEDR	80 CRI:	120V	P12ACR 0.135" P12 Prismatic Impact Resistant Acrylic (Inverted)	H/FC Fuse & Holder (One Supplied Per Circuit)
	4 White AL Hsg. & Polished 304 SS Door		2 LEDH	830 3000K CCT	277V	LEX 0.125" P12 Prismatic Polycarbonate (Inverted)	2/ED Two Drivers (Two Circuits)
	5 White AL Hsg. & White AL Door			835 3500K CCT	UNV	A19 0.156" A19 Prismatic Impact Resistant Acrylic (Inverted)	EDL -40F Electronic Driver
		2x2 2' x 2' Housing	2 LEDR	840 4000K CCT		TG 0.156" Prismatic Tempered Glass (Inverted)	H/EM** 10W Integral LED EM (Specify Input Voltage)
			2 LEDH	850 5000K CCT		HIA 0.140" P12 Prismatic High Impact Resistant Acrylic (Inverted)	WHT White Finished Door & HSG
			3 LEDR			FROST 0.125" Flat Diffusing Frost Acrylic	Pxl* Programmed to User Specified Lumen Value
		2x4 2' x 4' Housing	3 LEDH	90 CRI:		2DBW 0.125" Flat Diffused Acrylic with Bi-Directional Batwing Distribution	PxW* Programmed to User Specified Wattage Value
			4 LEDR	935 3500K CCT		LBW 0.125" Flat Diffused Acrylic with Linear Batwing Distribution	WHIP Must Specify Length and Wire Qty
				940 4000K CCT		GH85 0.125" Flat Diffused Acrylic with Glare Suppression Distribution	AMW Anti-Microbial White Powdercoat
							GG 1/8" Thick Grid Gasket (Provided Loose)
							Note: * Specify value in ordering notes below ** H/em not available for 2x2 with 2/ed option

Ordering Notes, If Applicable

# Hazardous X12 EL Troffers: ELX12-R-LED

1x4, 2x2 and 2x4 Hazardous Location LED Luminaires

## SPECIFICATIONS

**HOUSING:** One piece, hole free, robotically seam welded housing has flattened, silicone sealed knockouts for a superior seal. Housings are available in .040" 3003 Aluminum or 20Ga 430 Stainless Steel.

**DOOR FRAME:** Inset door frame made from welded channels regresses into the housing to allow the neoprene gasket to seal to the housing. Door frame is hinged by aircraft cables and secures to housing with captive stainless steel pan head screws. Available in .040" 3003 Powder coated Alum. , 20Ga 304 Polished SS.

**GASKETS:** Closed cell 100% pure neoprene gasket with vulcanized corners making a one-piece oil and solvent resistant gasket system. GG option provides a loose 1/8" thick adhesive backed gasket intended to adhere to the top face of a suspended grid ceiling for grid profiles that do not already have gasket on them.

**OPTICS:** Standard P12 prismatic acrylic lens is provided when no other options are selected. All prismatic lensing options come with an inverted lens so the smooth side faces the room for easy cleaning. All optics are sealed to the door with NSF listed RTV silicone sealant. Other optics are available, consult factory for more information or options not listed.

**LEDS:** Commercially available in a wide variety of Color Temperature (CCT), FLUX, and CRI. Highly efficient and consistent color maintained to 3 SDMC for color critical applications. B50/L70 and compliant with Zhaga recognized hole patterns. Consult factory for LED options or configurations not listed below.

**DRIVERS:** Standard Universal Voltage Class 2 drivers are 0-10v Dimmable to 10%. They come with at least 2.5Kv surge protection, have less than 10% THD at max load, Ballast Factor Greater than .95 and are programmable to match specific lumen or wattage requirements. Drivers with higher input voltage ratings are available, consult factory for driver specifications.

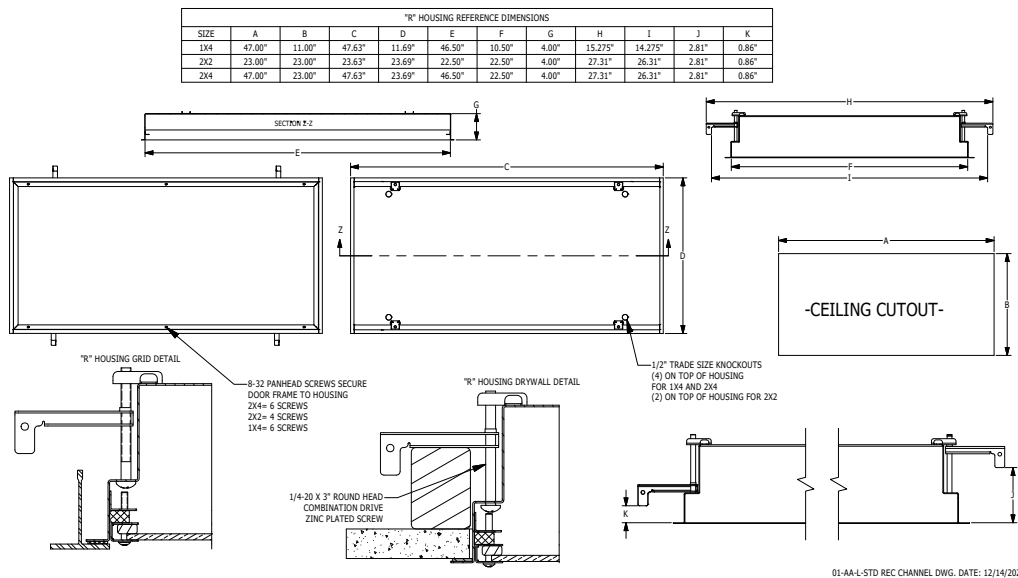
**REFLECTOR:** Die formed metal with high reflectance white polyester powder coat finish. Typical reflectivity 92%.

**INSTALLATION:** Suitable for recessed Non-IC installation into covered ceilings. Fixtures are supplied with .875" flattened knockouts for supply entry. Recessed housings have (4) swing out toggle arms that are used to draw the fixture in to the ceiling for hard lid installation without the need for a yoke hanger. The toggle arm adjuster bolts are accessible from the room side of the luminaire and the actual toggles can be used as means of establishing a seismic support for lay in ceiling installations. Confirm ceiling compatibility with dimension drawings below.

**FINISH:** Stainless steel door frames are satin polished unless WHT or AMW options are selected. All other materials are provided with gloss high reflectance white polyester powdercoat with 1000hr salt spray test per ASTM B117. AMW option provides a white anti-microbial polyester powder coat to all exposed surfaces.

**LISTINGS:** Listed for Class I Division II Groups A,B,C & D hazardous locations. IP55 rated for dust and water ingress. ETL listed per UL\_1598 for wet locations. Chicago Plenum Rated. Certified ISO-14644-1 for class 5 through class 9 cleanspaces. Certified Fed Std 209E for Class 100 through Class 100,000 cleanspaces. NSF2 listed for non-food & splash zones. Drivers and LEDs are covered by a 5 year warranty, the remaining fixture is covered by a 10 year

## PRODUCT DRAWINGS



# Hazardous X12 EL Troffers: ELX12-R-LED

1x4, 2x2 and 2x4 Hazardous Location LED Luminaires

## ENERGY DATA

HAZ CLASS 1 DIVISION 2 RECESSED & SURFACE CHANNEL LED TROFFER (APPROX <sup>1</sup> LUMENS DELIVERED)											
ENCLOSURE SIZE	LIGHT PACKAGE	80 CRI (3000K - 5000K)				90 CRI (3500K, 4000K)				HAZ LOCATION TEMP CODE	STANDARD DIMMING
		LUMENS	WATTS <sup>2</sup>	EFFICACY <sup>3</sup>	MAX AMB TEMP	LUMENS	WATTS <sup>2</sup>	EFFICACY <sup>3</sup>	MAX AMB TEMP <sup>4</sup>		
1X4	1LEDR	3,215	29	111	40°C (104°F)	3,100	29	107	40°C (104°F)	T4A	0-10V 10%
1X4	2LEDR	<b>6,430</b>	<b>55</b>	<b>117</b>	40°C (104°F)	<b>6,199</b>	<b>56</b>	<b>111</b>	40°C (104°F)	T4A	0-10V 10%
1X4	2LEDH	<b>12,446</b>	<b>109</b>	<b>114</b>	35°C (95°F)	<b>11,915</b>	<b>109</b>	<b>109</b>	35°C (95°F)	T4A	0-10V 10%
2X2	2LEDR	3,260	29	112	40°C (104°F)	3,270	29	113	40°C (104°F)	T4A	0-10V 10%
2X2	3LEDR	<b>4,887</b>	<b>42</b>	<b>116</b>	40°C (104°F)	<b>4,902</b>	<b>42</b>	<b>117</b>	40°C (104°F)	T4A	0-10V 10%
2X2	2LEDH	6,410	55	117	40°C (104°F)	6,130	55	111	40°C (104°F)	T4A	0-10V 10%
2X2	4LEDR	6,510	55	118	40°C (104°F)	6,530	55	119	40°C (104°F)	T4A	0-10V 10%
2X2	3LEDH	<b>9,608</b>	<b>80</b>	<b>120</b>	40°C (104°F)	<b>9,186</b>	<b>81</b>	<b>113</b>	35°C (95°F)	T4A	0-10V 10%
2X4	2LEDR	6,942	55	126	40°C (104°F)	6,640	56	119	40°C (104°F)	T4A	0-10V 10%
2X4	3LEDR	<b>10,412</b>	<b>83</b>	<b>125</b>	40°C (104°F)	<b>9,954</b>	<b>83</b>	<b>120</b>	40°C (104°F)	T4A	0-10V 10%
2X4	2LEDH	13,650	109	125	40°C (104°F)	12,990	109	119	40°C (104°F)	T4A	0-10V 10%
2X4	4LEDR	13,880	111	125	40°C (104°F)	13,270	113	117	40°C (104°F)	T4A	0-10V 10%
2X4	3LEDH	<b>20,464</b>	<b>164</b>	<b>125</b>	40°C (104°F)	<b>19,482</b>	<b>164</b>	<b>119</b>	40°C (104°F)	T4A	0-10V 10%

<sup>1</sup> DELIVERED LUMEN DATA IS EXTRAPOLATED FROM MEASURED DATA @ 25C WITH NO EXTRA OPTIONS. VARIANCES WILL OCCUR WHEN OPTIONS ARE CHOSEN

<sup>2</sup> WATTAGE IS MEASURED WITH 4000K SELECTION @ 120vAC AND Tambient = 25C. WATTAGES MAY VARY WITH ALTERNATE CONFIGURATIONS

<sup>3</sup> EFFICACY CALCULATED USING 4000K CCT DATA.

<sup>4</sup> MAX AMBIENT TEMP RATING AS SPECIFIED ON SAFETY REPORT, NON-IC INSTALLATION.

## PHOTOMETRICS

### P12 PRISMATIC

Key:

