

Hazardous Tear Drop

Sealed 4' Linear Teardrop Fluorescent Hazardous Location Luminaire

- **Suitable For Use In Class 1 Division 2 Groups A, B, C & D Hazardous Locations**
- **UL Listed for Wet Locations**
- **Surface Mounting to T-Bar Grid**
- **Row Mounting Available**



DISCLAIMER: Although KURTZON has prepared the information contained in this document with all due care, KURTZON does not warrant or represent that the information is free from errors or omission. Whilst the information is considered to be true and correct at the date of publication, changes in circumstances after the time of publication may impact on the accuracy of the information. The information may change without notice and KURTZON is not in any way liable for the accuracy of any information printed and stored or in any way interpreted or used.

ORDERING GUIDE

Series	Profile Type	Material	Size	Lamps	Voltage	Options
HL						
HL	AFV: Air Flow Vega Surface	1: White CRS Ext. & White CRS Int. 2: Polished 304 SS Ext. & White CRS Int. 3: Polished 304 SS Ext. & Polished 304 SS Int.	40: 4' Housing	1/T8: F32T8	120V 277V UNV 347V*	FC: Fuse & Holder (One Supplied Per Circuit) EBL: -20F Electronic Ballast EBPRS: Program Rapid Start Ballast WHT: White Finished Stainless Steel H1/EM: 1 Lamp EM (See Chart For Lamp Compatibility) TP: Stainless Steel Tamperproof Fasteners CRM: Continuous Row Mounting PA: Linear Prismatic Clear Acrylic WHIP: Must Specify Length and Wire Qty

Hazardous Tear Drop

Sealed 4' Linear Teardrop Fluorescent Hazardous Location Luminaire

SPECIFICATIONS

HOUSING: Double channel housing of 20Ga 1008 Cold Rolled Steel, 20Ga 304 Stainless Steel, or .040" 3003 Aluminum construction.

END CAPS: Precision stamped 20Ga 304 Stainless Steel end caps secured to housing with captive stainless steel pan head screws. See Options for Tamper resistant Torx drive stainless steel fasteners or hub assembly.

GASKETS: Closed cell 100% pure neoprene gasketing. Resists aging, grease and solvents.

LENS: 125" clear acrylic. See "Options" for more choices.

LAMPS: Suitable for most T8 lamps. (By others)

ELECTRICAL: Standard Class P Ballast - Electronic < 10% THD, high performance instant start universal voltage (120-277). See options for Rapid Start, Dimming, or Cold Temp Ballasts, Others available (must specify). Dual level switching available with 2/EB option

REFLECTOR: Die formed metal with high reflectance white polyester powder coat finish. Typical reflectivity 92%.

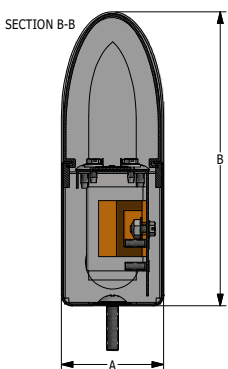
INSTALL SURFACE: Not for Outdoor use. Orientation restricted to vertical $\pm 45^\circ$ (typical ceiling mount) required for wet locations only. Suitable for any orientation in damp locations. Four .312" debossed holes for surface mounting. One .875" (1/2" trade-size) flattened and silicone sealed knockout located on back of housing for wiring. See below for other mounting and supply entry options.

ROWS: Joiner bands provided for continuous row mounting (See Option: CRM). Please specify number of fixtures in each run.

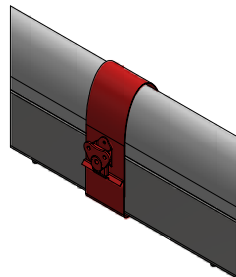
FINISH: Gloss white high reflectance 1000 hr. salt spray polyester powder coat finish standard for all housings. Stainless steel doorframes are satin polished unless option WHT is chosen.

LISTINGS: Listed for Class I Division II Groups A,B,C & D hazardous locations. UL listed per UL_1598 for wet locations. Electrical components covered under manufacturers warranty, the remaining fixture is covered by a 10 year warranty.

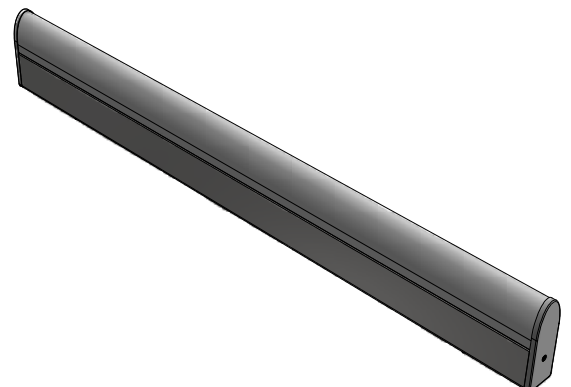
PRODUCT DRAWINGS



CRM JOINER BAND



AFV PROFILE REFERENCE DIMENSIONS (FLUORESCENT ONLY)						
SIZE	DIM A	DIM B	DIM C	DIM D	DIM E	DIM F
40	2.13"	6.13"	49.00"			



Hazardous Tear Drop

Sealed 4' Linear Teardrop Fluorescent Hazardous Location Luminaire

ENERGY DATA

HAZ. CLASS 1 DIVISION 2 "TEARDROP" PROFILE FLUORESCENT WRAP						
ENCLOSURE SIZE	LAMP TYPE	LAMP QTY ¹	(EBPRS) RAPID START	(H/EM) 1 LAMP EMERGENCY ²	HAZ TEMP CODE ³	MAX AMBIENT TEMP ³
40	F32WT8	1	OPTIONAL	700 Lm	T4A	25°C (77°F)

¹ LAMPS SUPPLIED BY OTHERS

² TOTAL GENERATED LUMENS (FROM STANDARD EMERGENCY BALLAST SPECIFICATION SHEET)

³ TEMP RATING MAY VARY WITH ALTERNATE SPECIFIED BALLASTS OR ANY NON STANDARD SELECTION