

# Food Processing A Profile Wrap

Sealed Surface High Efficiency LED Wrap Luminaire

- ETL Listed for Wet Locations
- IP65 Rated
- Several mounting options
- NSF 2 Listed
- DLC listed



To See All DLC Listings, Visit [www.Kurtzon.com/DLC](http://www.Kurtzon.com/DLC)

DISCLAIMER: Although KURTZON has prepared the information contained in this document with all due care, KURTZON does not warrant or represent that the information is free from errors or omission. While the information is considered to be true and correct at the date of publication, changes in circumstances after the time of publication may impact on the accuracy of the information. The information may change without notice and KURTZON is not in any way liable for the accuracy of any information printed and stored or in any way interpreted or used.

## ORDERING GUIDE

Series	Lens Type	Material	Size	Source	CCT	Voltage	Options
<b>FP</b>							
Series	Lens Type	Material	Size	Source	CCT	Voltage	Options
FP	<b>A:</b> Frosted Acrylic <b>LPA:</b> Clear Linear Prismatic Poly <b>FPA:</b> Frosted Linear Prismatic Poly	<b>1:</b> White CRS Ext. & White CRS Int. <b>3:</b> Polished 304 SS Ext. & 304 SS Int. <b>4:</b> White Alum Ext. & White CRS Int.	<b>20:</b> 2' Housing <b>40:</b> 4' Housing	<b>1/LEDR</b> <b>2/LEDR</b>	<b>83 CRI:</b> <b>830</b> = 3000K CCT <b>835</b> = 3500K CCT <b>840</b> = 4000K CCT <b>850</b> = 5000K CCT  <b>90+ CRI:</b> <b>935</b> = 3500K CCT <b>940</b> = 4000K CCT	<b>120V</b> <b>277V</b> <b>UNV</b> <b>347V*</b>	<b>FC:</b> Fuse & Holder (One Supplied Per Circuit) <b>EDL:</b> -40F Electronic Driver <b>EM10:</b> 10W Integral LED Battery Pack (Specify Input Voltage) <b>CRM:</b> Continuous Row Mounting <b>TP:</b> Stainless Steel Tamperproof Fasteners <b>SW:</b> Conduit Hub, Ring & Plug (installed on endcaps) <b>WHT:</b> White Finished Stainless Steel <b>PMB:</b> (2) Pendant Mount Brackets (Pendants or Chains by Others) <b>CMB:</b> (2) Corner Mount Brackets <b>AMB:</b> (2) Adjustable Mount Brackets <b>PxL:</b> Programmed to User Specified Lumen Value <b>PxW:</b> Programmed to User Specified Wattage Value <b>10KV:</b> 10KV Parallel Surge Protection (One Supplied Per Circuit) <b>GTD:</b> Generator Transfer Device (Specify Input Voltage) <b>WHIP:</b> Must Specify Length and Wire Qty <b>OCC:</b> Occupancy Sensor (Must Specify Type)

# Food Processing A Profile Wrap

Sealed Surface High Efficiency LED Wrap Luminaire

## SPECIFICATIONS

**HOUSING:** Double channel housing of 20Ga 1008 Cold Rolled Steel, 20Ga 304 Stainless Steel, or .040" 3003 Aluminum construction.

**END CAPS:** Precision stamped 20Ga 304 Stainless Steel end caps secured to housing with captive stainless steel flush head screws. SW Option provides a Sealed conduit hub installed on endcap.

**GASKETS:** Closed cell NSF listed nitrile gasketing. Resists aging, grease and solvents.

**LENS:** Extruded .125" thick frosted acrylic or linear prismatic polycarbonate available in clear or with frost inlay for obscuring LED image.

**LEDS:** Commercially available in a wide variety of Color Temperature (CCT), FLUX, and CRI. Highly efficient and consistent color maintained to 3 SDMC for color critical applications. B50/L70 and compliant with Zhaga recognized hole patterns. Consult factory for LED options or configurations not listed below.

**DRIVERS:** Standard Universal Voltage Class 2 drivers are 0-10v Dimmable to 1% for most LED configurations. They come with at least 2.5Kv surge protection, have less than 10% THD at max load, Ballast Factor Greater than .95 and are programmable to match specific lumen or wattage requirements. Drivers with higher input voltage ratings are available, consult factory for driver specifications.

**REFLECTOR:** Die formed metal with high reflectance white polyester powder coat finish. Typical reflectivity 92%.

**INSTALL SURFACE:** Suitable for wet locations under covered ceilings only. Four .312" debossed holes for surface mounting. One .875" (1/2" trade-size) flattened and knockout located on back of housing for wiring. See below for other mounting and supply entry options.

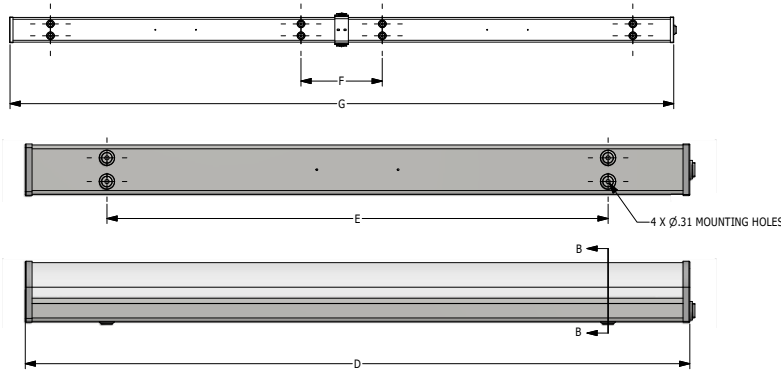
**ROWS:** Joiner bands provided for continuous row mounting (See Option: CRM). Please specify number of fixtures in each run.

**FINISH:** Stainless Steel Housings are Satin Polished unless option "WHT" is selected. All other housings are finished with gloss white high reflectance 1000hr saltspray polyester powdercoating.

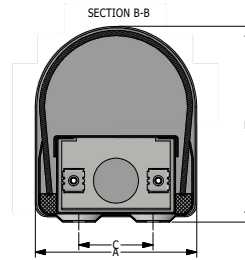
**LISTINGS:** IP65 rated for dust and water ingress. ETL listed per UL\_1598 for wet locations. Drivers and LEDs are covered by a 5 year warranty, the remaining fixture is covered by a 10 year warranty. NSF2 listed for splash zones.

## PRODUCT DRAWINGS

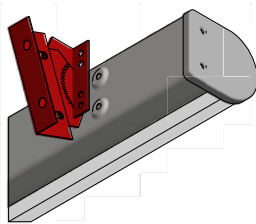
### CRM INSTALLATION



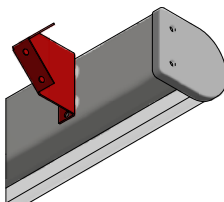
A PROFILE REFERENCE DIMENSIONS							
SIZE	DIM A	DIM B	DIM C	DIM D	DIM E	DIM F	DIM G
20	3.8"	4.6"	1.75"	25.07"	13.0"	12.0"	50.07"
40	3.8"	4.6"	1.75"	49.2"	37.0"	12.0"	98.2"



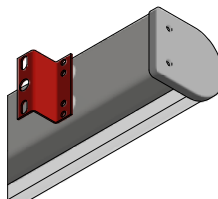
### AMB OPTION



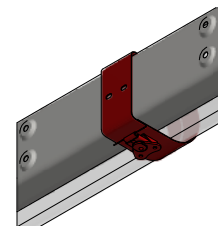
### CMB OPTION



### PMB OPTION



### CRM JOINER BAND



05-AA-L-A PROFILE WRAP DWG DATE: 6/04/18

# Food Processing A Profile Wrap

Sealed Surface High Efficiency LED Wrap Luminaire

## ENERGY DATA

*A* PROFILE LED WRAP (APPROX <sup>1</sup> LUMENS DELIVERED)											
LENS TYPE	ENCLOSURE SIZE	LED SELECTION	STANDARD DIMMING	83 CRI (3000K - 5000K)				90 CRI (3500K - 4000K)			
				LUMENS	WATTS <sup>2</sup>	EFFICACY <sup>3</sup>	MAX AMB TEMP <sup>4</sup>	LUMENS	WATTS <sup>2</sup>	EFFICACY <sup>3</sup>	MAX AMB TEMP <sup>4</sup>
A	20	1LEDR	0-10V 1%	1,830	15	122	40°C (104°F)	1,800	15	120	40°C (104°F)
FPA	20	1LEDR	0-10V 1%	1,480	15	99	40°C (104°F)	1,460	15	97	40°C (104°F)
LPA	20	1LEDR	0-10V 1%	1,850	15	123	40°C (104°F)	1,830	15	122	40°C (104°F)
A	20	2LEDR	0-10V 1%	<b>3,668</b>	<b>29</b>	126	40°C (104°F)	3,040	29	105	40°C (104°F)
FPA	20	2LEDR	0-10V 1%	2970	29	102	40°C (104°F)	2460	29	85	40°C (104°F)
LPA	20	2LEDR	0-10V 1%	<b>3717</b>	<b>29</b>	128	40°C (104°F)	3085	29	106	40°C (104°F)
A	40	1LEDR	0-10V 1%	<b>3886</b>	<b>29</b>	134	40°C (104°F)	3220	29	111	40°C (104°F)
FPA	40	1LEDR	0-10V 1%	3150	29	109	40°C (104°F)	2600	29	90	40°C (104°F)
LPA	40	1LEDR	0-10V 1%	3940	29	136	40°C (104°F)	3260	29	112	40°C (104°F)
A	40	2LEDR	0-10V 1%	<b>7016</b>	<b>55</b>	128	40°C (104°F)	5820	55	106	40°C (104°F)
FPA	40	2LEDR	0-10V 1%	5680	55	103	40°C (104°F)	4700	55	85	40°C (104°F)
LPA	40	2LEDR	0-10V 1%	7110	55	129	40°C (104°F)	5900	55	107	40°C (104°F)

- <sup>1</sup> DELIVERED LUMEN DATA IS EXTRAPOLATED FROM MEASURED DATA @25C WITH NO EXTRA OPTIONS. VARIANCES WILL OCCUR WHEN OTHER SELECTIONS ARE MADE
- <sup>2</sup> WATTAGE IS MEASURED WITH 4000K SELECTION @ 120vAC AND Tambient = 25C. WATTAGES MAY VARY WITH ALTERNATE CONFIGURATIONS
- <sup>3</sup> EFFICACY CALCULATED USING 4000K CCT DATA.
- <sup>4</sup> MAX AMBIENT TEMP RATING. TEMP RATING MAY VARY WITH ALTERNATE SPECIFIED DRIVERS OR ANY NON STANDARD SELECTION
- <sup>5</sup> DELIVERED LUMENS FOR EM10 = (10W)\*(EFFICACY) = DELIVERED LUMENS. EM10 ADDS 4W TO TOTAL LUMINAIRE

## PHOTOMETRICS

### FP-A-1-40-2/LEDR835-UNV

Report No: 103047098CRT-005

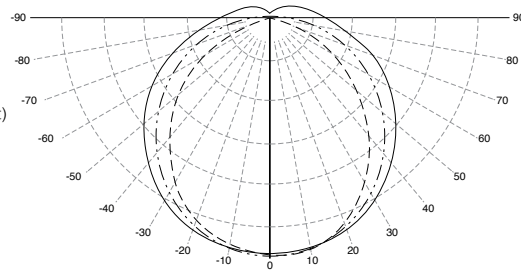
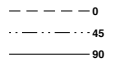
Total Lumens: 7,016

Wattage: 54.44

Efficacy: 128.9 (Lumens Per Watt)

Fixture Size: 4'

Key:



### FP-LPA-1-20-2/LEDR835-UNV

Report No: 103047098CHI-002

Total Lumens: 3,717

Wattage: 29.00

Efficacy: 128 (Lumens Per Watt)

Fixture Size: 2'

Key:

