

# Food Processing Vaportight: FP-SEG-720-LED

Food Processing 7" x 2' Linear Vaportight LED Luminaire for Surface or Pendant Mounting

- NSF2 Listed for Non-Food, Splash, and Food Zone Non-Contact
- IP65 / IP66 / IP67
- 1500 PSI hosedown
- UL 1598 Wet Location
- Marine grade 316 stainless steel latches & Mounting brackets
- Nema4X
- UL 5VA Rated (will not melt or burn)
- Polycarbonate Lens: Clear / Frosted
- B.A.A. & B.A.B.A Compliant & Made in the USA by a Family Owned US Corporation



DISCLAIMER: Although KURTZON has prepared the information contained in this document with all due care, KURTZON does not warrant or represent that the information is free from errors or omission. Whilst the information is considered to be true and correct at the date of publication, changes in circumstances after the time of publication may impact on the accuracy of the information. The information may change without notice and KURTZON is not in any way liable for the accuracy of any information printed and stored or in any way interpreted or used.

## ORDERING GUIDE

Series	Lumen Package	CCT/CRI	Optics	Voltage	Controls	Mounting (Not Required)	Sensors (Not Required)	Options
<b>FP-SEG-720</b>								
Series	Lumen Package	CCT/CRI	Optics	Voltage	Controls	Mounting (Not Required)	Sensors	Options
<b>FP-SEG-720</b>	<b>1L0</b> 1 Row of Low Flux LED's	<b>83 CRI:</b>	<b>CP</b> Clear Polycarbonate	<b>UNV</b> (120-277 Vac)	<b>DIM1</b> 0-10V 1%	<b>CMH</b> Chain Mtg Hooks	<b>OCC MW</b> Microwave Occ Sensor (Internal 32" MAX)	<b>PxW</b> * Program to Specified Wattage (Replace X with Watts)
	<b>2L0</b> 2 Rows of Low Flux LED's	<b>830</b> 3000K	<b>FP</b> Frost Polycarbonate	<b>HV</b> (347-480 Vac)	<b>DIMS</b> 0-10V 5%	<b>MB45</b> 45° Mtg Bracket	<b>OCC HB</b> Highbay Occ Sensor (End Mount 20"-40")	<b>PxL</b> * Program to Specified Lumens (Replace X with Lumens)
	<b>2HI</b> 2 Rows of High Flux LED's	<b>835</b> 3500K	<b>CPD</b> Diffused Clear Poly		<b>DALI</b> DALI 1%	<b>SCM</b> Single Conduit Stem	<b>OCC LB</b> Lowbay Occ Sensor (End Mount 8'-10')	<b>10KV</b> 10KV Surge Protection (one per specified circuit)
		<b>840</b> 4000K	<b>FPD</b> Diffused Frost Poly		<b>LUTRON</b> (Specify Type)		<b>DL/OCC HB</b> Daylight & Highbay Occ Sensor (End Mount 40" MAX)	<b>3WP</b> 3 Wire Cord W/Plug must provide specs.
		<b>850</b> 5000K			<b>D2OFF</b> 0-10V 1% Dim To Off		<b>DL/OCC LB</b> Daylight & Lowbay Occ Sensor (End Mount 8" MAX)	<b>WHIP</b> Flex whip installed must provide specs
					<b>OTHER</b> (Must Specify)		<b>OTHERS</b> Must Specify	<b>FF</b> Fuse & Fuse Holder (One per Specified Circuit)
		<b>90+ CRI:</b>						
		<b>935</b> 3500K						
		<b>940</b> 4000K						
		<b>950</b> 5000K						

Ordering Notes, If Applicable

# Food Processing Vaportight: FP-SEG-720-LED

Food Processing 7" x 2' Linear Vaportight LED Luminaire for Surface or Pendant Mounting

## SPECIFICATIONS

**HOUSING:** Injection molded, .125" thick Hole Free White Fiberglass body with a 5VA Flame Rating

**OPTICS:** Injection molded Heavy gauge smooth or ribbed polycarbonate material available Clear or frosted.

**REFLECTOR:** Standard (92%) High Reflectance white 22 gauge metal. Formed wiring cover for rigidity. Removable without tools or screws.

**GASKETS:** One piece urethane extruded foam with smooth surface.

**LATCHES:** Six (6) 316 Stainless Steel over-center latches secure lens to housing.

**MOUNTING:** Provided with (2) mounting brackets for suspending (cables by others). See mounting options for other configurations.

**LEDS:** Commercially available in a wide variety of Color Temperature (CCT), FLUX, and CRI. Highly efficient and consistent color maintained to 3 SDMC for color critical applications. B50/L70 and compliant with Zhaga recognized hole patterns. Consult factory for LED options or configurations not listed below.

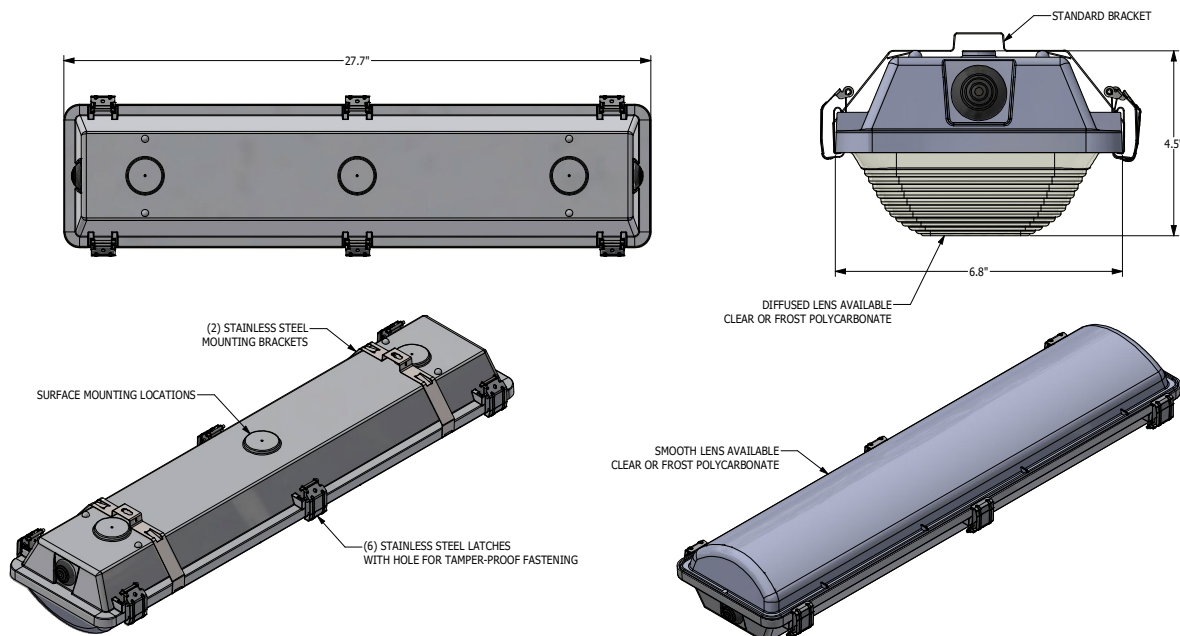
**DRIVERS:** Standard Universal Voltage Class 2 drivers are 0-10v Dimmable to 1%. They come with at least 2.5Kv surge protection, have less than 10% THD at max load, Ballast Factor Greater than .95 and are programmable to match specific lumen or wattage requirements. Drivers with higher input voltage ratings are available, consult factory for driver specifications.

**INSTALLATION:** Suitable for surface or suspending installation onto or under covered ceilings. Two sealed 1/2 inch trade size conduit entry points located at each end. See options for pre-wired whips or cords.

**LISTINGS:** NSF2 Listed for Non-Food, Splash, and Food Zone Non-Contact. IP67 rated for dust and water ingress. Suitable for 1500 PSI high pressure hosesdowns. UL listed per UL\_1598 for wet locations. Nema 4x rated. Drivers and LEDs are covered by a 5 year warranty, the remaining fixture is covered by a 10 year warranty. This product Series is both Build America Buy America (B.A.B.A.) & Buy American Act (B.A.A.) compliant.

## PRODUCT DRAWINGS

### SEG 720 REFERENCE DIMENSIONS



11-CA-L-SEG 720 DWG DATE: 4/05/2025

# Food Processing Vaportight: FP-SEG-720-LED

Food Processing 7" x 2' Linear Vaportight LED Luminaire for Surface or Pendant Mounting

## ENERGY DATA

STD SEG 720 (APROX <sup>1</sup> DELIVERED LUMENS)											
ENCLOSURE SIZE	LED PACKAGE	DIMMING SELECTION	CRI	CLEAR LENS			FROST LENS			AMBIENT TEMP	
				LUMENS <sup>1</sup>	WATTS <sup>2</sup>	EFFICACY <sup>3</sup> (Lm/W)	LUMENS <sup>1</sup>	WATTS <sup>2</sup>	EFFICACY <sup>3</sup> (Lm/W)	MINIMUM	MAXIMUM <sup>4</sup>
720	1 LO	0-10V 1%	83	1,940	15	129	1,740	15	116	-20°C (-4°F)	35°C (95°F)
720	1 LO	0-10V 5%	83	1,940	15	129	1,740	15	116	-20°C (-4°F)	40°C (104°F)
720	1 LO	0-10V 1%	90+	1,870	15	125	1,680	15	112	-20°C (-4°F)	35°C (95°F)
720	1 LO	0-10V 5%	90+	1,870	15	125	1,680	15	112	-20°C (-4°F)	40°C (104°F)
720	2 LO	0-10V 1%	83	3,885	29	134	3,485	29	120	-20°C (-4°F)	35°C (95°F)
720	2 LO	0-10V 5%	83	3,885	29	142	3,485	29	127	-20°C (-4°F)	40°C (104°F)
720	2 LO	0-10V 1%	90+	3,745	29	129	3,365	29	116	-20°C (-4°F)	35°C (95°F)
720	2 LO	0-10V 5%	90+	3,745	29	136	3,365	29	123	-20°C (-4°F)	40°C (104°F)
720	2 HI	0-10V 1%	83	10,850	77	141	9,730	77	126	-20°C (-4°F)	30°C (86°F)
720	2 HI	0-10V 5%	83	10,850	77	141	9,730	77	126	-40°C (-40°F)	40°C (104°F)
720	2 HI	0-10V 1%	90+	8,620	78	111	7,725	78	99	-20°C (-4°F)	30°C (86°F)
720	2 HI	0-10V 5%	90+	8,620	78	111	7,725	78	99	-40°C (-40°F)	35°C (95°F)
720	EM10 <sup>5</sup>	NA	NA	1000-1300	4	NA	870-1130	4	NA	0°C (32°F)	35°C (95°F)

<sup>1</sup> DELIVERED LUMEN DATA IS EXTRAPOLATED FROM MEASURED DATA @25C WITH NO EXTRA OPTIONS. VARIANCES WILL OCCUR WHEN OPTIONS ARE CHOSEN

<sup>2</sup> WATTAGE IS MEASURED WITH 4000K SELECTION @ 120VAC AND Tambient = 25C. WATTAGES MAY VARY WITH ALTERNATE CONFIGURATIONS

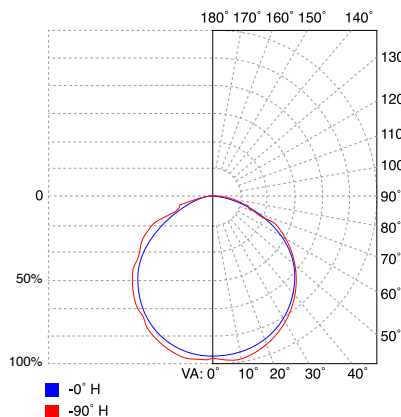
<sup>3</sup> EFFICACY CALCULATED USING 4000K CCT DATA.

<sup>4</sup> TEMP RATING MAY VARY WITH SPECIFIED DRIVERS OR ANY NON STANDARD SELECTION

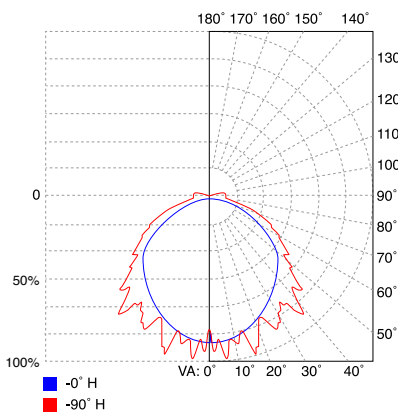
<sup>5</sup> 90 MINUTE 10W EMERGENCY DRIVER; LUMENS CALCULATED BASED ON FIXTURE EFFICACY. (EX: 10W x 100Lm/W = 1000Lm Delivered)

## PHOTOMETRICS

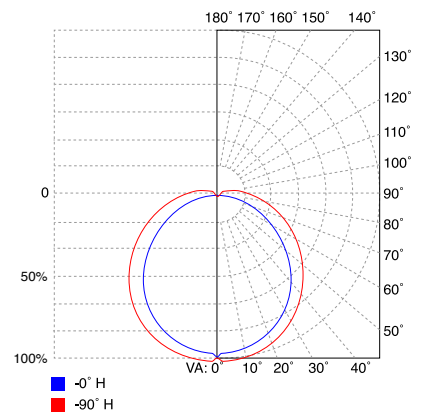
### CP Optics



### CPD Optics



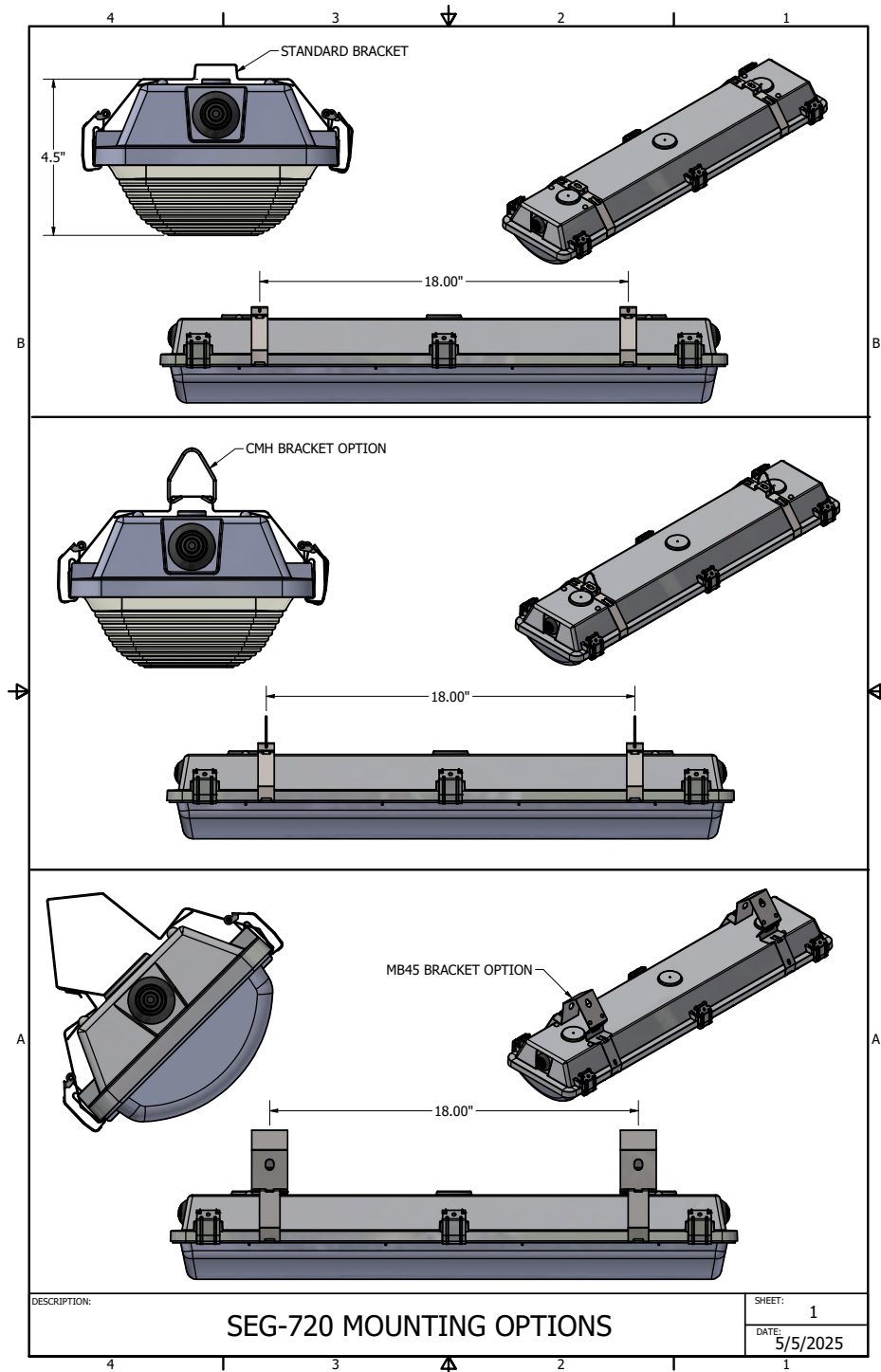
### FP Optics



# Food Processing Vaportight: FP-SEG-720-LED

Food Processing 7" x 2' Linear Vaportight LED Luminaire for Surface or Pendant Mounting

## MOUNTING OPTIONS



# Food Processing Vaportight: FP-SEG-720-LED

Food Processing 7" x 2' Linear Vaportight LED Luminaire for Surface or Pendant Mounting

## MOUNTING OPTIONS

