

Food Processing Top Access High Bay: FP-IMP LED

2x2 Recessed LED Luminaire With Top Access for IMP Ceilings

- **625 lb Direct Static Load Rating**
- **For Recessed Installation Into 4" Insulated Metal Panel (IMP) Ceilings (5" and 6" Optional)**
- **Accessible From Plenum Side Of Ceiling Only**
- **Multiple optics available**
- **Up To 40,000 Lumens Delivered**
- **Ambient Operating Temp up to 55°C (131°F)**
- **Evaluated and approved by ETL for installation into IMP ceilings.**
- **Luminaire may be in direct contact with IMP ceiling's insulation, eliminating need to cap off the rough-in saving time and money.**
- **B.A.A. & B.A.B.A Compliant & Made in the USA by a Family Owned US Corporation**



DISCLAIMER: Although KURTZON has prepared the information contained in this document with all due care, KURTZON does not warrant or represent that the information is free from errors or omission. Whilst the information is considered to be true and correct at the date of publication, changes in circumstances after the time of publication may impact on the accuracy of the information. The information may change without notice and KURTZON is not in any way liable for the accuracy of any information printed and stored or in any way interpreted or used.

ORDERING GUIDE

Series	Material	Size	Row Qty.	LED Type	CCT/CRI	Voltage	Optics	Options
FP-IMP		2x2LP		LEDFE				

Series	Material	Size	Light Source			Voltage	Optics	Options
			Row Qty.	LED Type	CCT/CRI			
FP-IMP	1 White CRS Hsg. & White CRS Door	2x2LP 2' x 2' Housing	4	LEDFE	80 CRI:	120V	P12ACR 0.135" P12 Prismatic Impact Resistant Acrylic (Inverted)	FC Fuse & Holder (One Supplied Per Circuit)
			6		835 3500K	277V	LEX 0.125" P12 Prismatic Polycarbonate (Inverted)	EM20 20W Remote LED EM (Specify Input Voltage)
	840 4000K	UNV			A19 0.156" A19 Prismatic Impact Resistant Acrylic (Inverted)	WHT White Finished Door & HSG		
	850 5000K	347V*			TG 0.156" Prismatic Tempered Glass (Inverted)	PxL Programmed to User Specified Lumen Value. ∞		
	NOTE: Not all options compatible with 347V or 480V power. Confirm with Factory.	480V*			HIA 0.140" P12 Prismatic High Impact Resistant Acrylic (Inverted)	PxW Programmed to User Specified Wattage Value. ∞		
		FROST 0.125" Flat Diffusing Frost Acrylic			10KV 10KV Parallel Surge Protection (One Supplied Per Circuit)			
		2DBW 0.125" Flat Diffused Acrylic with Bi-Directional Batwing Distribution			GTD Generator Transfer Device			
		LBW 0.125" Flat Diffused Acrylic with Linear Batwing Distribution			IMP5 Fixture Suitable for 5" IMP			
		GH85 0.125" Flat Diffused Acrylic with Glare Suppression Distribution			IMP6 Fixture Suitable for 6" IMP			
		NOTE: FROST option is standard and will be provided when no other option is selected			1/CPB Locking Cordset with Plug and Junction box termination			
					CORD Must specify Length/type/Wire Qty			
					WHIP Must Specify Length and Wire Qty			
					AMW Anti-Microbial White Powdercoat			
	FZNC NSF Food Zone Non-Contact rating (adds a FDA approved room side lens)							

Ordering Notes, If Applicable

Food Processing Top Access High Bay: FP-IMP LED

2x2 Recessed LED Luminaire With Top Access for IMP Ceilings

SPECIFICATIONS

HOUSING: Welded, sealed, and hole free CRS Housing with latches secured for accessing electrical panel.

DOOR FRAME: Overlapping style trim flange made from 14Ga powdercoated cold rolled steel or 14Ga polished 304 stainless steel. The trim frame is secured to the housing by 12 #12-24 screws that are only accessible from the plenum side of the ceiling. All hardware is concealed for cleanability.

GASKETS: NSF Listed closed cell microcellular extruded gasket with vulcanized corners making a one-piece oil and solvent resistant gasket system.

OPTICS: Standard frost acrylic lens is provided when no other options are selected. All prismatic lensing options come with an inverted lens so the smooth side faces the room for easy cleaning. All optics are sealed to the door with NSF listed RTV silicone sealant. Other optics are available, consult factory for more information or options not listed.

TOP COVER 2X2LP: Houses all electrical components and is easily removable from the plenum side by use of (4) rotary draw latches. The 2x2LP version is available with 4 or 6 linear modules that are available in 80CRI only. High efficiency modules do not require heat sinking allowing the top cover to be smaller and lighter. Provided with ul listed class 2 programmable power supplies that are capable of dimming down to 5% via 0-10V dimming. Power supplies have 6KV of surge protection built into them.

INSTALLATION: Two .875" supply entrances for conduit connection. Designed to clamp a 4" IMP ceiling, optionally available for 5" and 6" ceilings also. Rated for 625lb static load (not intended to be walked on). Available with specified Cords and Whips.

FINISH: Stainless steel door frames are satin polished unless WHT or AMW options are selected. All other materials are provided with gloss high reflectance white polyester powdercoat with 1000hr salt spray test per ASTM B117. AMW option provides a white anti-microbial polyester powder coat on frame.

LISTINGS: NSF2 listed for Non-Food & Splash Zones, optionally listed for Food Zone Non-Contact with FZNC option. Suitable for 1700 PSI high pressure hosedowns. ETL listed per UL_1598 for wet locations. Chicago Plenum Rated. Drivers and LEDs are covered by a 5 year warranty, the remaining fixture is covered by a 10 year warranty. Suitable for direct static loads up to 625Lbs, not intended to be walked on. This product Series is both Build America Buy America (B.A.B.A.) & Buy American Act (B.A.A.) compliant.

ENERGY DATA - LOW PROFILE (2x2LP)

IMP-2X2LP-4or6 LED												
ENCLOSURE SIZE	LIGHT PACKAGE	70 CRI (5000K)			80 CRI (3000K-5000K)			90 CRI (3500K-5000K)			DIMMING AVAILABILITY	MAX AMBIENT TEMP (°C) ⁴
		Lumens	Wattage	Efficacy	Lumens	Wattage	Efficacy	Lumens	Wattage	Efficacy		
2X2LP	FROST LENS 4LED FE	N/A	N/A	N/A	25,700	210	122.4	N/A	N/A	N/A	0-10V 5%	55°C (131°F)
2X2LP	FROST LENS 6LED FE	N/A	N/A	N/A	38,607	314.2	122.9	N/A	N/A	N/A	0-10V 5%	55°C (131°F)
2X2LP	20W EM ⁵	N/A	N/A	N/A	2400-2450	9	N/A	N/A	N/A	N/A	0-10V 5%	50°C (122°F)

¹ DELIVERED LUMEN DATA IS EXTRAPOLATED FROM MEASURED DATA @ 25C WITH NO EXTRA OPTIONS. VARIANCES WILL OCCUR WHEN OTHER SELECTIONS ARE MADE

² WATTAGE IS MEASURED WITH LED 750 SELECTION @ 120vAC AND Tambient = 25C. WATTAGES WILL VARY AND INCREASE WHEN ALTERNATE OPTOINS ARE SELECTED

³ EFFICACY CALCULATED USING LOWEST CCT @ 25C AMBIENT VARIATIONS MAY OCCUR

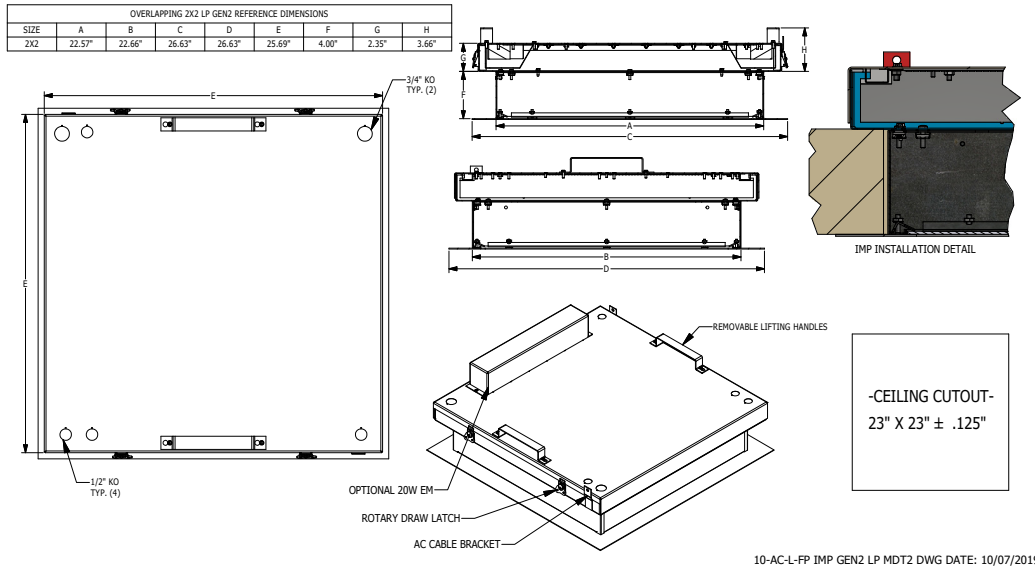
⁴ MAX TEMP RATING IS WITH NO OTHER OPTIONS SELECTED.

⁵ INITIAL LUMEN VALUE CALCULATED BY (20W)*(NORMAL LUMENS/NORMAL WATTAGE).

Food Processing Top Access High Bay: FP-IMP LED

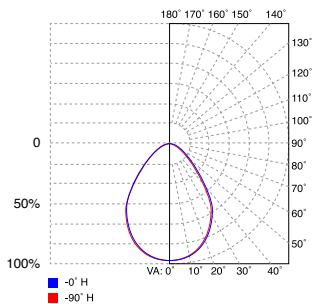
2x2 Recessed LED Luminaire With Top Access for IMP Ceilings

PRODUCT DRAWINGS - LOW PROFILE (2x2LP)

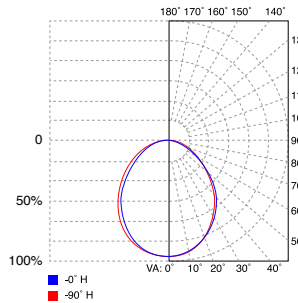


PHOTOMETRICS - LOW PROFILE (2x2LP)

GH85 OPTICS



FROST OPTICS



2DBW OPTICS

