

# Food Processing High Bay Troffer: FP-HB2 LED

Wet Location 18" x 46" LED Suspended High Bay Luminaire

- **NSF2 Construction for Non-Food, Splash, and Food Zone Non-Contact.**
- **Sloped Back For water Shedding**
- **Up to 146Lm/Watt**
- **Four (4) Eyebolts Installed on Back for Suspending**
- **Up to 35,000 Lumens Delivered**
- **Made in the USA by a Family Owned US Corporation**
- **B.A.A. Compliant & Made in the USA by a Family Owned US Corporation**



DISCLAIMER: Although KURTZON has prepared the information contained in this document with all due care, KURTZON does not warrant or represent that the information is free from errors or omission. Whilst the information is considered to be true and correct at the date of publication, changes in circumstances after the time of publication may impact on the accuracy of the information. The information may change without notice and KURTZON is not in any way liable for the accuracy of any information printed and stored or in any way interpreted or used.

## ORDERING GUIDE

Series	Material	Series	Source	CCT/CRI	Voltage	Optics	Options
<b>FP-HB2</b>		<b>40</b>					
Series	Material	Size	Source	CCT/CRI	Voltage	Optics	Options
<b>FP-HB2</b>	3 Polished 304 SS Hsg. & Polished 304 SS Door	40 18"x 46" Housing	LO Low Output	80 CRI:	120V	P12ACR 0.135" P12 Prismatic Impact Resistant Acrylic (Inverted)	SW Wet Location Hub Supplied (not installed)
			MED Medium Output	835 3500K	277V	LEX 0.125" P12 Prismatic Polycarbonate (Inverted)	PxL Programmed to User Specified Lumen Value.
	5 White AL Hsg. & White AL Door		HI High Output	840 4000K	UNV	A19 0.156" A19 Prismatic Impact Resistant Acrylic (Inverted)	PxW Programmed to User Specified Wattage Value.
				850 5000K	347V*	TG 0.156" Prismatic Tempered Glass (Inverted)	10KV 10KV Parallel Surge Protection (One Supplied Per Circuit)
						HIA 0.140" P12 Prismatic High Impact Resistant Acrylic (Inverted)	GTD Generator Transfer Device
						FROST 0.125" Flat Diffusing Frost Acrylic	WHIP Must Specify Length and Wire Qty
						2DBW 0.125" Flat Diffused Acrylic with Bi-Directional Batwing Distribution	OCCMW Internal microwave OCC Sensor
						LBW 0.125" Flat Diffused Acrylic with Linear Batwing Distribution	FC Fuse & Holder (One Supplied Per Circuit)
						GH85 0.125" Flat Diffused Acrylic with Glare Suppression Distribution	EM10 10W Integral LED EM (Specify Input Voltage)
							EM20 20W Remote LED EM (Specify Input Voltage)
							WHT White Finished Door & HSG
							AMW Anti-Microbial White Powdercoat
							2/ED Two Drivers/Two Circuits
							AC20 20' Stainless steel Aircraft Cables (SET OF 4)
							ACY10 10' Stainless Steel Y-Cables (SET OF 2)
							FZNC NSF food zone non-contact rating (adds FDA approved room side lens)

NOTE: P12ACR option is standard and will be provided when no other option is selected

Ordering Notes, If Applicable

# Food Processing High Bay Troffer: FP-HB2 LED

Wet Location 18" x 46" LED Suspended High Bay Luminaire

## SPECIFICATIONS

**HOUSING:** Welded sloped back housing for water shedding, available in polished 304 stainless steel or white powder coated .050" aluminum.

**DOOR FRAME:** One piece inset door frame made of polished 304 stainless steel or white powder coated aluminum. Secured to housing with 14 captive stainless steel screws and hinged to housing with 2 stainless steel aircraft cables.

**GASKETS:** NSF Listed closed cell microcellular extruded gasket with vulcanized corners making a one-piece oil and solvent resistant gasket system.

**OPTICS:** Standard P12 prismatic acrylic lens is provided when no other options are selected. All prismatic lensing options come with an inverted lens so the smooth side faces the room for easy cleaning. All optics are sealed to the door with NSF listed RTV silicone sealant. Other optics are available, consult factory for more information or options not listed.

**LEDS:** Commercially available in a wide variety of Color Temperature (CCT), FLUX, and CRI. Highly efficient and consistent color maintained to 3 SDMC for color critical applications. B50/L70 and compliant with Zhaga recognized hole patterns. Consult factory for LED options or configurations not listed below.

**DRIVERS:** Standard Universal Voltage Class 2 drivers are 0-10v dimmable. They come with at least 2.5Kv surge protection, have less than 10% THD at max load, Ballast Factor Greater than .95 and are programmable to match specific lumen or wattage requirements. Drivers with higher input voltage ratings are available, consult factory for driver specifications.

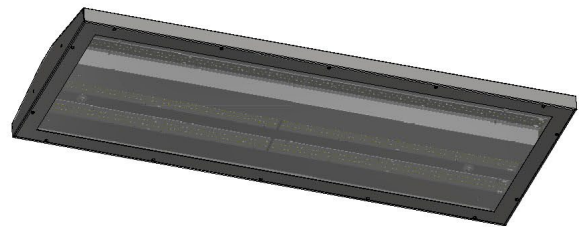
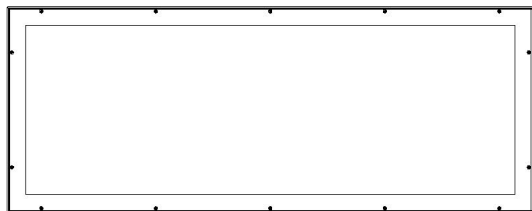
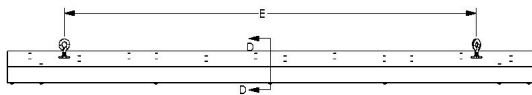
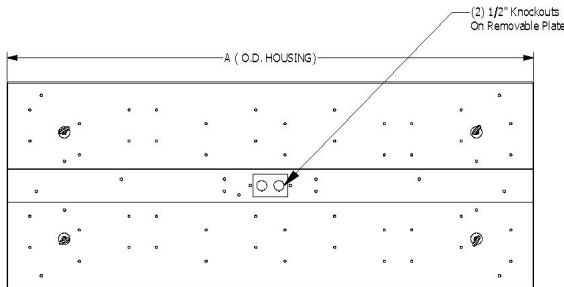
**REFLECTOR:** Die formed metal with high reflectance white polyester powder coat finish. Typical reflectivity 92%.

**INSTALLATION:** Suitable for suspension under covered ceilings only. Luminaire comes standard with (4) installed eyebolts on the back of the housing for suspending. Cables and other suspending hardware available under options. Power entry through sealed access plate with 1/2" trade sized knockouts on top center of the luminaire.

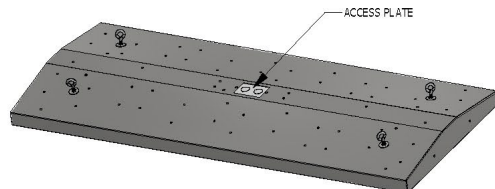
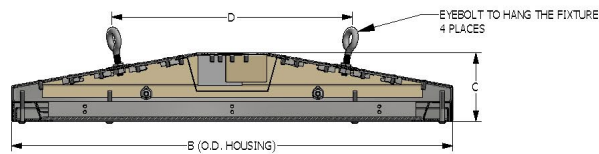
**FINISH:** Stainless steel door frames & housings are satin polished unless WHT or AMW options are selected. All other materials are provided with gloss high reflectance white polyester powder coat with 1000hr salt spray test per ASTM B117. AMW option provides a white anti-microbial polyester powder coat to all exposed surfaces.

**LISTINGS:** Suitable for use in NSF2 Splash and non-food zone. FZNC option provides a FDA approved plastic in addition to the specified lens for Food Zone Non-Contact applications. IP65 rated for dust and water ingress. Suitable for 1700 PSI high pressure hoedowns. ETL listed per UL\_1598 for wet locations.

## PRODUCT DRAWINGS



FP-HB REFERENCE DIMENSIONS					
FIXTURE	DIM A	DIM B	DIM C	DIM D	DIM E
FP-HB	46.00"	18.00"	2.78"	9.80"	36.00"



# Food Processing High Bay Troffer: FP-HB2 LED

Wet Location 18" x 46" LED Suspended High Bay Luminaire

## ENERGY DATA

FOOD PROCESSING 18x46 LED HIGHBAY (APPROX <sup>1</sup> LUMENS DELIVERED)							
ENCLOSURE SIZE	LIGHT PACKAGE / LENS	80 CRI (3000K - 5000K)					STANDARD DIMMING
		LUMENS <sup>1</sup>	WATTS <sup>2</sup>	EFFICACY <sup>3</sup>	MIN AMB TEMP <sup>4</sup>	MAX AMB TEMP <sup>4</sup>	
40	HIGH OUTPUT	43,200	305	141	-40°C (-40°F)	40°C (104°F)	0-10V 5%
40	MEDIUM OUTPUT	28,400	209	135	-40°C (-40°F)	40°C (104°F)	0-10V 5%
40	LOW OUTPUT	19,800	147	134	-40°C (-40°F)	40°C (104°F)	0-10V 5%
40	EM10	1,340-1,410	4	NA	0°C (32°F)	30°C (86°F)	NA

<sup>1</sup> DELIVERED LUMEN DATA IS EXTRAPOLATED FROM MEASURED DATA @25C WITH NO EXTRA OPTIONS. VARIANCES WILL OCCUR WHEN OTHER SELECTIONS ARE MADE

<sup>2</sup> WATTAGE IS MEASURED WITH 4000K SELECTION @ 120vAC AND Tambient = 25C. WATTAGES MAY VARY WITH ALTERNATE CONFIGURATIONS

<sup>3</sup> EFFICACY CALCULATED USING 4000K CCT DATA.

<sup>4</sup> MAX AMBIENT TEMP RATING. TEMP RATING MAY VARY WITH ALTERNATE SPECIFIED DRIVERS OR ANY NON STANDARD SELECTION