

Food Processing B Profile Wrap

Sealed 4' Linear Fluorescent Surface B-Profile Wrap

- **NSF2 Listed**
- **IP65 RATED**
- **UL Listed for Wet Locations**
- **Several Mounting Options Available**
- **B.A.A. & B.A.B.A Compliant & Made in the USA by a Family Owned US Corporation**



DISCLAIMER: Although KURTZON has prepared the information contained in this document with all due care, KURTZON does not warrant or represent that the information is free from errors or omission. While the information is considered to be true and correct at the date of publication, changes in circumstances after the time of publication may impact on the accuracy of the information. The information may change without notice and KURTZON is not in any way liable for the accuracy of any information printed and stored or in any way interpreted or used.

ORDERING GUIDE

| Series | Lens Type | Material | Size | Lamps | Voltage | Options |
|--------|---|---|--|--|--|---|
| FP | | | | | | |
| Series | Lens Type | Material | Size | Lamps | Voltage | Options |
| FP | B: Smooth Frosted Acrylic LPB: Clear Linear Prismatic Poly | 1: White CRS Ext. & White CRS Int. 3: Polished 304 SS Ext. & 304 SS Int. 4: White Alum Ext. & White CRS Int. | 20: 2' Housing 40: 4' Housing | 2/T8: F32T8 2/T5: F28WT5 2/T5HO: F54WT5HO | 120V 277V UNV 347V* | FC: Fuse & Holder (One Supplied Per Circuit) 2/EB: Two Ballasts (Two Circuits) EBL: -20F Electronic Ballast EBPRS: Program Rapid Start Ballast WHT: White Finished Stainless Steel SW: Conduit Hub, Ring & Plug (installed on endcaps) 1/EM: 1 Lamp EM (See Chart For Lamp Compatibility) 2/EM: 2 Lamp EM (See Chart For Lamp Compatibility) CRM: Continuous Row Mounting PMB: (2) Pendant Mount Brackets (Pendants or Chains by Others) CMB: (2) Corner Mount Brackets AMB: (2) Adjustable Mount Brackets 10KV: 10KV Parallel Surge Protection (One Supplied Per Circuit) GTD: Generator Transfer Device WHIP: Must Specify Length and Wire Qty OCC: Occupancy Sensor (Must Specify Type) |

Food Processing B Profile Wrap

Sealed 4' Linear Fluorescent Surface B-Profile Wrap

SPECIFICATIONS

HOUSING: Double channel housing of 20Ga 1008 Cold Rolled Steel, 20Ga 304 Stainless Steel, or .040" 3003 Aluminum construction.

END CAPS: Precision stamped 20Ga 304 Stainless Steel end caps secured to housing with captive stainless steel flush head screws. SW Option provides a Sealed conduit hub installed on endcap.

GASKETS: Closed cell NSF listed nitrile gasketing. Resists aging, grease and solvents.

LENS: Extruded .125" thick frosted acrylic or Linear prismatic clear polycarbonate. .

LAMPS: Suitable for most T8, T5, and T5HO lamps. (By others)

ELECTRICAL: Standard Class P Ballast - Electronic < 10% THD, high performance instant start universal voltage (120-277). See options for Rapid Start, Dimming, or Cold Temp Ballasts, Others available (must specify). Dual level switching available with 2/EB option

REFLECTOR: Die formed metal with high reflectance white polyester powder coat finish. Typical reflectivity 92%.

INSTALL SURFACE: Suitable for wet locations under covered ceilings only. Four .312" debossed holes for surface mounting. One .875" (1/2" trade-size) flattened and knockout located on back of housing for wiring. See below for other mounting and supply entry options.

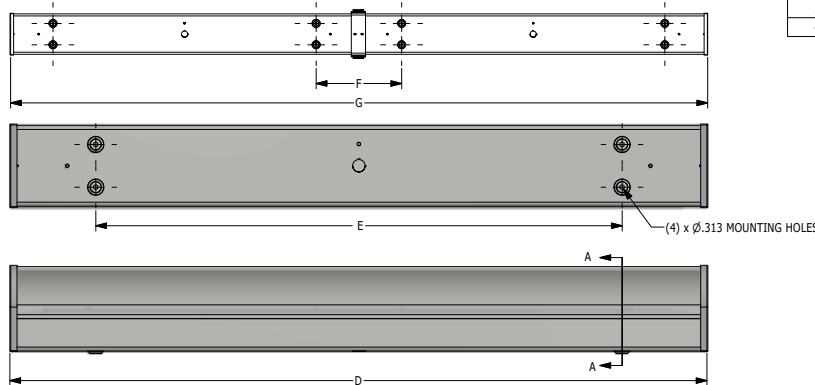
ROWS: Joiner bands provided for continuous row mounting (See Option: CRM). Please specify number of fixtures in each run.

FINISH: Stainless Steel Housings are Satin Polished unless option "WHT" is selected. All other housings are finished with gloss white high reflectance 1000hr saltspray polyester powdercoating.

LISTINGS: NSF2 listed for Splash and Non-Food zones. IP65 Rated for dust and water ingress. UL listed per UL1598 for Wet locations. Electrical components are covered under the manufacturers warranty, the remaining fixture is covered by a 10 year warranty. This product Series is both Build America Buy America (B.A.B.A.) & Buy American Act (B.A.A.) compliant.

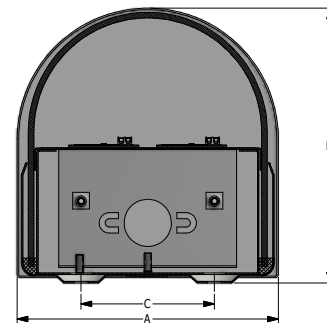
PRODUCT DRAWINGS

CRM INSTALLATION



| B PROFILE REFERENCE DIMENSIONS | | | | | | | |
|--------------------------------|-------|-------|-------|--------|-------|-------|--------|
| SIZE | DIM A | DIM B | DIM C | DIM D | DIM E | DIM F | DIM G |
| 20 | 5.9" | 6.2 | 3.0" | 25.07" | 13.0" | 12.0" | 50.07" |
| 40 | 5.9" | 6.2" | 3.0" | 49.2" | 37.0" | 12.0" | 89.2" |

SECTION A-A

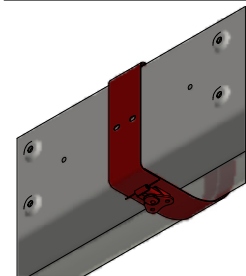
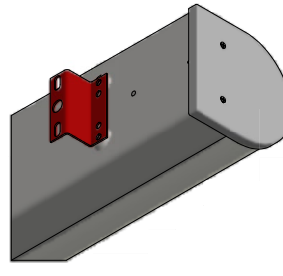
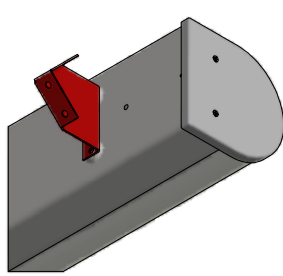
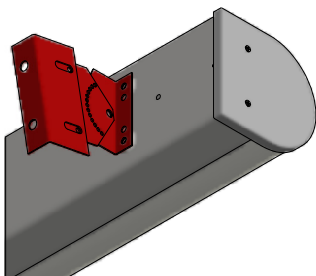


AMB OPTION

CMB OPTION

PMB OPTION

CRM JOINER BAND



05-BA-L-B PROFILE WRAP DWG DATE: 6/04/18

Food Processing B Profile Wrap

Sealed 4' Linear Fluorescent Surface B-Profile Wrap

ENERGY DATA

| "B" PROFILE FLUORESCENT WRAP | | | | | | |
|------------------------------|-----------|-----------------------|---------------------|--------------------------------------|--------------------------------------|-------------------------------|
| ENCLOSURE SIZE | LAMP TYPE | LAMP QTY ¹ | (EBPRS) RAPID START | (2/EM) 2 LAMP EMERGENCY ² | (1/EM) 1 LAMP EMERGENCY ² | MAX AMBIENT TEMP ³ |
| 40 | F32WT8 | 2 | OPTIONAL | 1460 Lm | 700 Lm | 40°C (104°F) |
| 40 | F28WT5 | 2 | STANDARD | NA | 1050 Lm | 40°C (104°F) |
| 40 | F54WT5HO | 2 | STANDARD | NA | 1150 Lm | 40°C (104°F) |

¹ LAMPS SUPPLIED BY OTHERS

² TOTAL GENERATED LUMENS (FROM STANDARD EMERGENCY BALLAST SPECIFICATION SHEET)

³ TEMP RATING MAY VARY WITH ALTERNATE SPECIFIED BALLASTS OR ANY NON STANDARD SELECTION