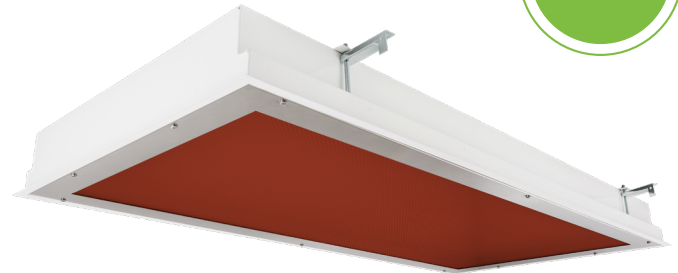


Circadian Cleanroom TL Vivarium Troffers

1x4, 2x2 and 2x4 Red/BIOS® LED Luminaires.



- **Rated IP65**
- **Suitable for ISO 3-9 Cleanspaces**
- **Suitable for 209E class 100-100,000 Cleanspaces**
- **ETL listed for Wet Locations**
- **One piece Inset Doorframe**
- **Robotically seam welded housing**
- **Narrow Spectrum 630nm and 660nm Red LEDs**
- **White / Red separately controlled circuits**
- **Recessed Housing suitable for Tbar Grid AND Hardlid Installations**
- **Made in the USA by a Family Owned US Corporation**
- **This Kurtzon product is illuminated by BIOS® to provide healthy, low energy lighting that promotes improved sleep, better health and well-being**



DISCLAIMER: Although KURTZON has prepared the information contained in this document with all due care, KURTZON does not warrant or represent that the information is free from errors or omission. While the information is considered to be true and correct at the date of publication, changes in circumstances after the time of publication may impact on the accuracy of the information. The information may change without notice and KURTZON is not in any way liable for the accuracy of any information printed and stored or in any way interpreted or used.

ORDERING GUIDE

Series	Installation Type	Material	Size	Red LED	Wavelength	Row Qty.	LED Type	CCT/Dim Type	Voltage	Options
TL										
Series	Installation Type	Material	Size	Red LED	Wavelength	Light Source			Voltage	Options
						Row Qty.	LED Type	CCT/Dim Type		
TL	R: Recessed (Suitable for Flange & Grid Installations)	3: White 430 SS Hsg. & Polished 304 SS Door 4: White AL Hsg. & Polished 304 SS Door 5: White AL Hsg. & White AL Door 7: White AL Hsg. & White CRS Door	1x4: 1' x 4' Housing MAX 3 Arrays Total <i>(2 Max Per Color)</i>	1/RLED	630: 630nm	1	LED-XBL1	835BIOS-DY	UNV FC: Fuse & Holder (One Supplied Per Circuit) 2/EDW: Two Circuits of White Light 2/EDR: Two Circuits of Red Light EM10: 10W Integral LED EM (Specify Input Voltage) EM20: 20W External LED EM (Specify Input Voltage) WHT: White Finished Door & HSG LEX: .125" Prismatic Polycarbonate A19: .156" Prismatic P19 Pattern Clear Acrylic HIA: .140" High Impact P12 Pattern Clear Acrylic TG: .156" Prismatic Tempered Glass SW: Wet Location Hub Supplied (not installed) PxL: Programmed to User Specified Lumen Value. PxW: Programmed to User Specified Wattage Value. 10KV: 10KV Parallel Surge Protection (1 Per Circuit) WHIP: Must Specify Length and Wire Qty .125 FROST: 1/8" Frost Acrylic Lens OCCMW: Internal microwave OCC Sensor	
				2/RLED	660: 660nm	2	LED-XBL2 LED-XBL3	840BIOS-DY 835BIOS-ST 840BIOS-ST		
			2x2: 2' x 2' Housing MAX 4 Arrays Total OR 2x4: 2' x 4' Housing MAX 4 Arrays Total	1/RLED	630: 630nm	1	LED-XBL1	835BIOS-DY		
				2/RLED	660: 660nm	2	LED-XBL2	840BIOS-DY		
				3/RLED		3	LED-XBL3	835BIOS-ST		
				4/RLED						
	S: Surface	1: White CRS Hsg. & White CRS Door 2: White CRS Hsg. & Polished 304 SS Door 3: Polished 304 SS Hsg. & Polished 304 SS Door 4: White AL Hsg. & Polished 304 SS Door 5: White AL Hsg. & White AL Door 6: White CRS Hsg. & White AL Door 7: White AL Hsg. & White CRS Door	1x4: 1' x 4' Housing MAX 2 Arrays Total	1/RLED	630: 630nm	1	LED-XBL1	835BIOS-DY		
				2/RLED	660: 660nm	2	LED-XBL2 LED-XBL3	840BIOS-DY 835BIOS-ST 840BIOS-ST		
			2x2: 2' x 2' Housing MAX 4 Arrays Total OR 2x4: 2' x 4' Housing MAX 4 Arrays Total	1/RLED	630: 630nm	1	LED-XBL1	835BIOS-DY		
				2/RLED	660: 660nm	2	LED-XBL2	840BIOS-DY		
				3/RLED		3	LED-XBL3	835BIOS-ST		
				4/RLED						

Notes:
BIOS-DY - Dynamic dimming module **BIOS-ST** - Static dimming module

Circadian Cleanroom TL Vivarium Troffers

1x4, 2x2 and 2x4 Red/BIOS® LED Luminaires.

SPECIFICATIONS

HOUSING: One piece, hole free, robotically seam welded housing has flattened knockouts for a superior seal. Recessed housings are available in 20Ga 430 Stainless Steel or 20Ga Cold Rolled Steel. Surface housings are available in 20Ga 304 Stainless Steel or 20Ga Cold Rolled Steel.

DOOR FRAME: One piece door frame with welded corners overlaps the fixture allowing the NSF approved microcellular gasket to seal to the mounting surface. Door frame is secured to the housing with torsion springs for a crevice free door frame that can be opened without tools. Available in 20Ga 304 Polished SS, or 18Ga Powder coated CRS.

GASKETS: NSF Listed closed cell microcellular extruded KleanLock SealPro gasket with vulcanized corners making a one-piece oil and solvent resistant gasket system.

LENS: Impact resistant .135" thick virgin acrylic with P12 prismatic pattern inverted. Sealed to door with NSF listed RTV silicone. See "Options" for other choices.

BIOS® LEDS: Provided with BIOS® LED modules that are available in 3 different luminous flux intensities. When Dynamic dimming is specified, a bio dimmer is included with each driver inside the fixture. BIOS® LEDs have been expertly crafted to perform as advertised. Engineered to only include the highest quality components, the LEDs are backed by a limited 5 year warranty. See last page for more information on how BIOS® works.

RED LEDS: Red LEDs provide a narrow 630nm spectrum light for wavelength sensitive applications. Alternately available are 660nm narrow spectrum LEDs for a wider range of applications.

DRIVERS: Standard Universal Voltage Class 2 drivers are 0-10v Dimmable to 1% for most LED configurations. They come with at least 2.5Kv surge protection, have less than 10% THD at max load, Ballast Factor Greater than .95 and are programmable to match specific lumen or wattage requirements. Drivers with higher input voltage ratings are available, consult factory for driver specifications. (each color LED comes standard with its own driver)

RED DRIVERS: Standard Universal Voltage Class 2 drivers are 0-10v Dimmable to 1% . They come with at least 2.5Kv surge protection, have less than 10% THD at max load, Ballast Factor Greater than .95 and are programmable to match specific lumen or wattage requirements. Red LEDs come with their own driver so they can be switched separately from the white LEDs.

REFLECTOR: Die formed metal with high reflectance white polyester powder coat finish. Typical reflectivity 92%.

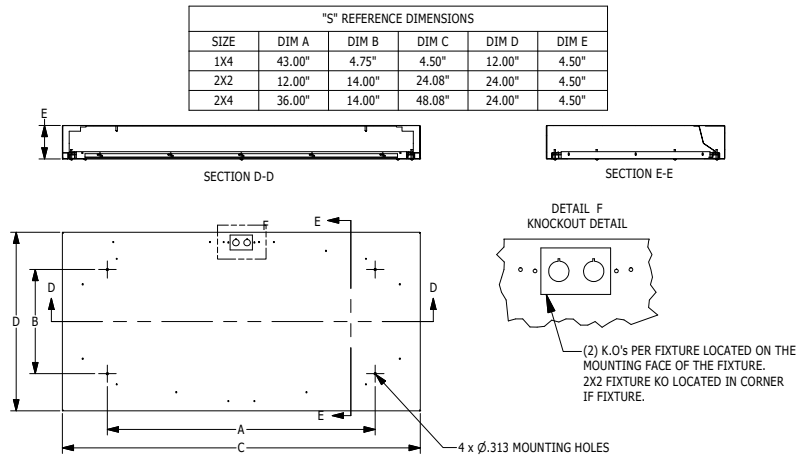
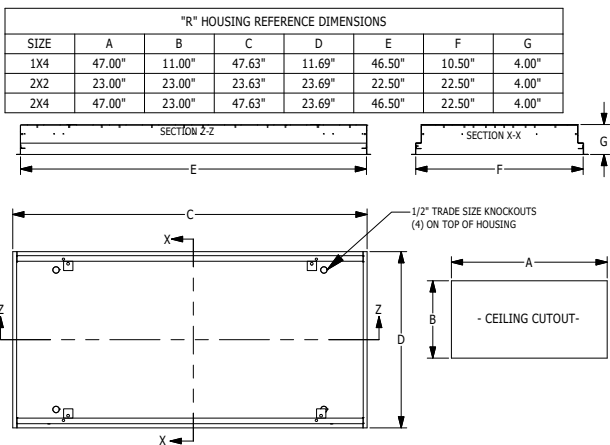
INSTALL RECESSED: One fixture suitable for Grid and Flanged installation. Accommodates 1" and 1.5" T-Bar Grid (Consult factory for 2" T-Bar Grid compatibility). Four adjustable toggle arms with holes for seismic support wire attachment. Supply entry via 1/2" trade size flattened knockouts.

INSTALL SURFACE: Four .312" dia mounting holes and a removable gasketed wiring access plate with Supply entry via 1/2" trade size flattened knockouts.

FINISH: Gloss white high reflectance 1000 hr. salt spray polyester powder coat finish standard for all recessed housings. Stainless steel doorframes and surface housings are satin polished unless option WHT is chosen

LISTINGS: IP66 rated for dust and water ingress. Suitable for 1700 PSI high pressure hosedowns. ETL listed per UL_1598 for wet locations. Chicago Plenum Rated. Certified ISO-14644-1 for class 3 through class 9 cleanspaces. Certified Fed Std 209E for Class 1 through Class 100,000 cleanspaces. NSF2 Listed for Food Zones. Drivers and LEDs are covered by a 5 year warranty, the remaining fixture is covered by a 10 year warranty.

PRODUCT DRAWINGS



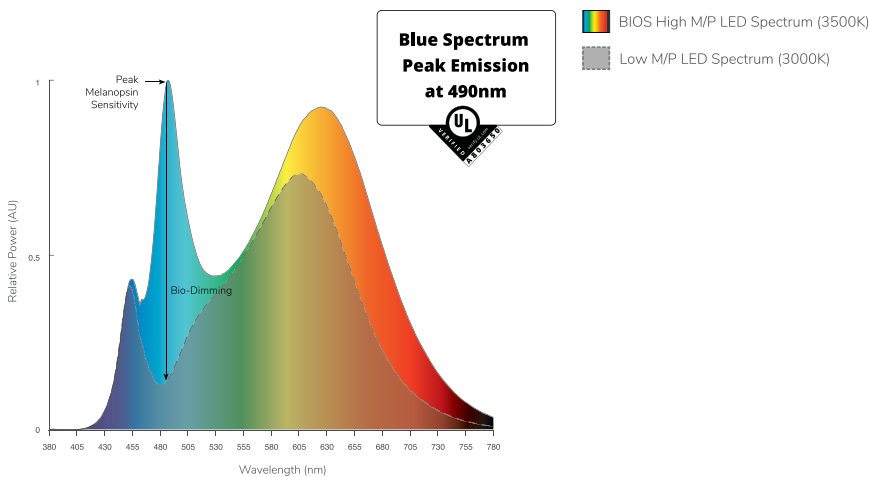
Circadian Cleanroom TL Vivarium Troffers

1x4, 2x2 and 2x4 Red/BIOS® LED Luminaires.

ENERGY DATA - WHITE LED

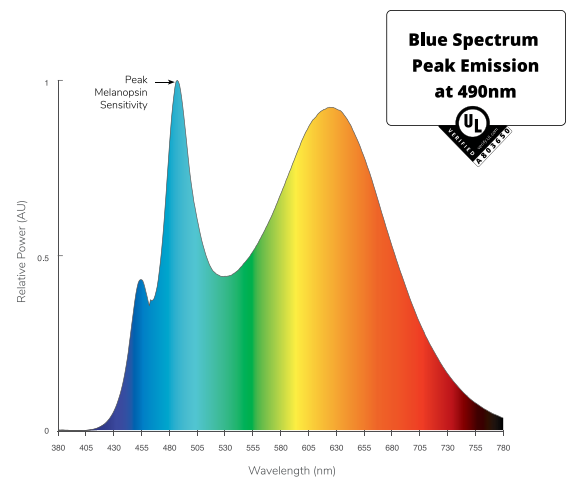
Energy Data Pending

PHOTOMETRICS - DYNAMIC



Dynamic Board Spectral Power Distribution (3500K)

PHOTOMETRICS - STATIC



Static Board Spectral Power Distribution (3500K)

Circadian Cleanroom TL Vivarium Troffers

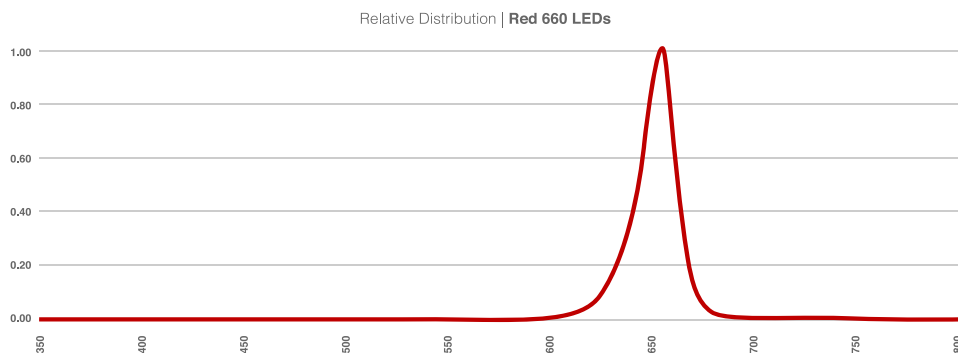
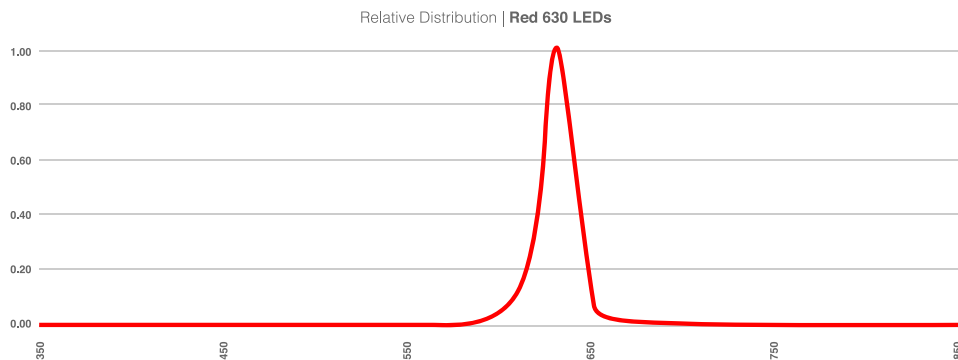
1x4, 2x2 and 2x4 Red/BIOS® LED Luminaires.

ENERGY DATA - COLOR LED

INSET-FGRS-RED LED TROFFER								
ENCLOSURE SIZE	LED SELECTION	630nm (RED)			660nm (RED)			MAX AMBIENT TEMP ³
		LUMENS	WATTS	EFFICACY	LUMENS	WATTS	EFFICACY	
1X4	1RLED	1,105	27	41	1,149	44.5	25.8	40°C (104°F)
1X4	2RLED	2,048	53	39	2,298	88.9	25.8	40°C (104°F)
2X2	1RLED	540	14	39	558	22.2	25.1	40°C (104°F)
2X2	2RLED	1001	27	37	1,116	44.5	25.1	40°C (104°F)
2X2	3RLED	1541	41	38	1,674	66.7	25.1	40°C (104°F)
2X2	4RLED	2002	53	38	2,232	88.9	25.1	40°C (104°F)
2X4	1RLED	1228	27	45	1,261	44.5	28.3	40°C (104°F)
2X4	2RLED	2275	53	43	2,522	89	28.3	40°C (104°F)
2X4	3RLED	3503	80	44	3,783	133.5	28.3	40°C (104°F)
2X4	4RLED	4550	106	43	5,044	178	28.3	40°C (104°F)

* View previous page for energy data notes.

COLOR LED RELATIVE DISTRIBUTION



Circadian Cleanroom TL Vivarium Troffers

1x4, 2x2 and 2x4 Red/BIOS® LED Luminaires.

HOW BIOS® WORKS

Production of melatonin, the hormone that helps us to sleep, is regulated by the ipRGC, a non-visual photoreceptor in the human eye. The wavelength of blue sky light at 490nm, present in sunlight, prevents melatonin production during the day. These signals are crucial in allowing humans to distinguish between day and night, promoting better sleep, health and well-being.

**Blue Spectrum
Peak Emission
at 490nm**



DYNAMIC LIGHT ENGINE

The SkyBlue® Dynamic Light Engine automatically calibrates the light level, reducing melanopic lux while keeping photopic lux at a constant. Dynamic light engines are paired with the current sensing smart BIOS® Bio-Dimming module allowing it operate using any single channel CC LED driver, using any dimming interface. Available in 3500K (dim to 3000K), and 4000K (dim to 3500K).

STATIC LIGHT ENGINE

The SkyBlue® Static Spectrum Light Engine delivers the industry's best melanopic-to-photopic (m/p) ratio, with R9 greater than 90 at each color temperature. Easily integrated into existing LED fixtures and compatible with all LED drivers, the SkyBlue® Static Spectrum Light Engine is the ideal replacement for static color light fixtures. Static light engines have the full output of BIOS® SkyBlue® all the time and the peak cannot be adjusted.

DIMMER SETTINGS WITH BIOS® DYNAMIC DIMMING TECHNOLOGY

	DIMMER SETTING	BIOS® SKYBLUE®	LIGHT OUTPUT
	100% (full on)	100%	100%
	99%-51%	100%-0%	100%-90%
	50%	No BIOS®	~90%
	49%-0%	No BIOS®	Linear Dimming

BIOS® SkyBlue® operates at 100% when the light output is at 100%, for maximum circadian impact. As the light is dimmed, BIOS® SkyBlue® dims until 50% is reached when the BIOS® SkyBlue® is no longer present.