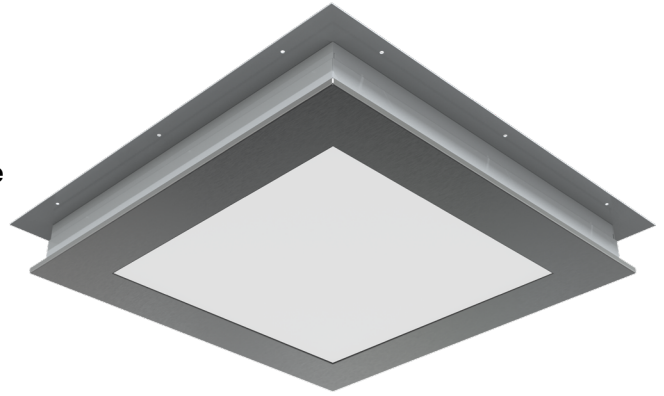


Top Access Cleanroom Walkable Luminaire: KL-WALKF-LED

1x4, 2x2, 2x4 RECESSED LUMINAIRE WITH TOP ACCESS FOR 2" - 3" WALKABLE CEILINGS

- Recessed top access design for walkable ceilings
- Designed to withstand a direct static load of 840lbs (intended to be walked on)
- Flush top access design eliminates tripping hazard on service side of ceiling
- Field adjustable to accommodate 2" to 3" thick walkable ceilings
- Door frame does has easy clean construction with no exposed fasteners
- Suitable for installation into ISO3 through ISO9 Cleanrooms
- Top cover is removable without breaking seal on environmental side



DISCLAIMER: Although KURTZON has prepared the information contained in this document with all due care, KURTZON does not warrant or represent that the information is free from errors or omission. Whilst the information is considered to be true and correct at the date of publication, changes in circumstances after the time of publication may impact on the accuracy of the information. The information may change without notice and KURTZON is not in any way liable for the accuracy of any information printed and stored or in any way interpreted or used.

ORDERING GUIDE

Series	Series	Size	RQ	LED Type	CCT/CRI	Voltage	Optics	Options	
KL-WALKF									
Series	Lens Frame Material	Size	Row Qty	Light Source		Voltage	Optics	Options	
KL-WALKF	1 CRS HSG, CRS FRAME	1x4 1' x 4' Housing	2	LEDR = Low Output	835 = 80 CRI; 3500k	UNV 120-277VAC	FROST 1/8" FROST ACRYLIC LENS	FC FUSE + FUSE HOLDER	
	2 CRS HSG, SS FRAME		3	LEDH = High Output	840 = 80 CRI; 4000k		P12ACR 1/8" PRISMATIC ACRYLIC (INVERTED)	EM10 REMOTE 10W BATTERY	
					850 = 80 CRI; 5000k		LEX 1/8" PRISMATIC POLYCARBONATE (INVERTED)	EM20 REMOTE 20W BATTERY	
	2x2 2' x 2' Housing OR		2x4 2' x 4' Housing	2	LEDH = High Output		935 = 90 CRI; 3500k	TG 5/32" PRISMATIC TEMPERED GLASS (INVERTED)	10KV 10KV PARALLEL SURGE PROTECTION
				4			940 = 90 CRI; 4000k	2DBW 1/8" FLAT DIFFUSED ACRYLIC WITH BI-DIRECTIONAL BATTING DISTRIBUTION	PxL PROGRAM TO USER SPECIFIED LUMENS
	2x4 2' x 4' Housing		6	LEDH = High Output	950 = 90 CRI; 5000k		GH85 1/8" FLAT DIFFUSED ACRYLIC WITH GLARE SUPPRESSION DISTRIBUTION	PxW PROGRAM TO USER SPECIFIED WATTS	
						AMW ANTI-MICROBIAL POWDERCOAT			
							LCORD 2 PC LOCKING CORDSET (PROVIDE SPECS)		
							FZNC NSF2 FOOD ZONE NON CONTACT		
	*Note P12ACR lens will be provided when no optics are selected								

Ordering Notes, If Applicable

*Must specify luminaire quantity in each row

Top Access Cleanroom Walkable Luminaire: KL-WALKF-LED

1x4, 2x2, 2x4 RECESSED LUMINAIRE WITH TOP ACCESS FOR 2" - 3" WALKABLE CEILINGS

SPECIFICATIONS

TOP COVER: Constructed of 14ga steel with reinforcement braces to withstand intentional walk on loads up to 840lbs without damage to the luminaire. The top cover is the removable and replaceable from the service side of the walkable ceiling and has all of the electronic components.

HOUSING: Sturdy 14ga steel housing is designed to support the load on the top cover while additionally clamping the ceiling with the door frame. Field adjustable design allows for installation into ceilings ranging from 2" to 3" thickness available in nominal 1x4, 2x2, & 2x4 sizes.

DOOR FRAME: Door frame is the only exposed component on the environmental side of the ceiling. The door frame secures from the service side of the ceiling and clamps the ceiling with the housing. Die formed 1 piece construction without exposed fasteners allows for a smooth and easily cleanable design.

OPTICS: Standard P12 prismatic acrylic lens is provided when no other options are selected. All prismatic lensing options come with an inverted lens so the smooth side faces the room for easy cleaning. All optics are sealed to the door with NSF listed RTV silicone sealant. Other optics are available, consult factory for more information or options not listed.

FINISH: Stainless steel door frames are satin polished unless WHT or AMW options are selected. All other materials are provided with gloss high reflectance white polyester powdercoat with 1000hr salt spray test per ASTM B117. AMW option provides a white anti-microbial polyester powder coat to all exposed surfaces.

ELECTRONICS: Commercially available in a wide variety of Color Temperature (CCT), FLUX, and CRI. Highly efficient and consistent color maintained to 3 SDMC for color critical applications. B50/L70 and compliant with Zhaga recognized hole patterns. Drivers are class 2 UL Listed and factory programmable. The factory programmable 0-10v 5% dimming power supplies are intended for industrial applications and come with built in 6kv surge protection. Consult factory for options not listed on spec sheet for availability.

LISTINGS & PERFORMANCE: IP66 rated for dust and water ingress & suitable for 1700 PSI high pressure hoedowns. Suitable for use in ISO3-9 Cleanrooms. Designed and constructed to adhere to NSF2 splash zones and UL1598 wet location standard requirements. Drivers and LEDs are covered by a 5 year warranty, the remaining fixture is covered by a 10 year warranty. This product is Buy American Act (B.A.A.) a prismatic acrylic lens, see options for other available lensing. Available in powdercoated CRS or polished stainless steel.

ENERGY DATA

SIZE	SOURCE	CRI	EST. LUMENS	WATTS	EFFICACY
1X4	2	LEDR	4,539	36.6	124
1X4	3	LEDR	6,808	53.1	128
1X4	2	LEDH	6,827	52.3	131
1X4	3	LEDH	10,241	76.7	134

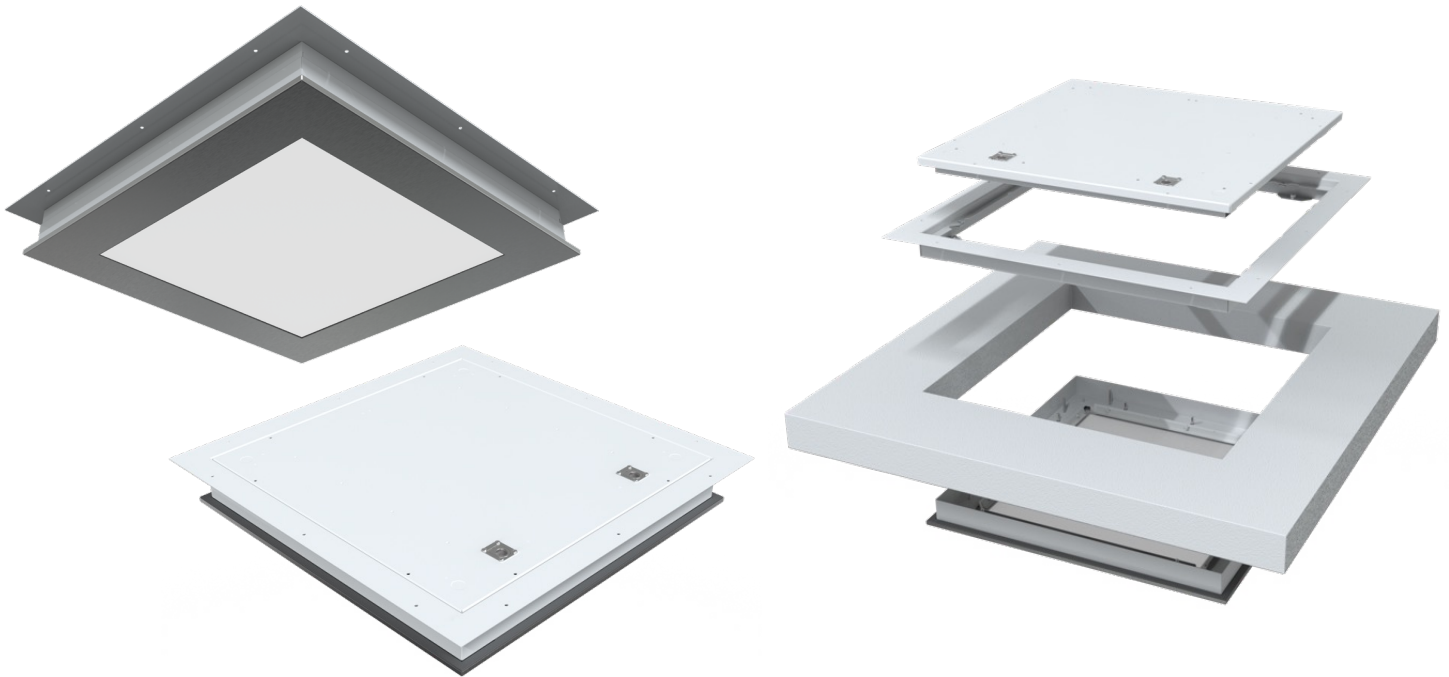
SIZE	SOURCE	CRI	EST. LUMENS	WATTS	EFFICACY
2X2	2	LEDR	2,269	20.3	112
2X2	2	LEDH	4,516	36.6	123
2X2	4	LEDR	4,539	36.6	124
2X2	6	LEDR	6,808	53.1	128
2X2	4	LEDH	9,031	69.6	130
2X2	6	LEDH	13,547	103	132

SIZE	SOURCE	CRI	EST. LUMENS	WATTS	EFFICACY
2X4	2	LEDR	4,539	36.6	124
2X4	2	LEDH	6,827	52.3	131
2X4	4	LEDR	9,077	69.6	130
2X4	6	LEDR	13,615	103	132
2X4	4	LEDH	13,655	101.4	135
2X4	6	LEDH	20,482	153.7	133

Top Access Cleanroom Walkable Luminaire: KL-WALKF-LED

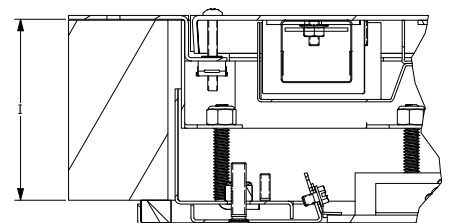
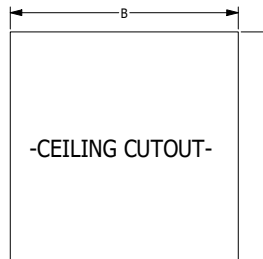
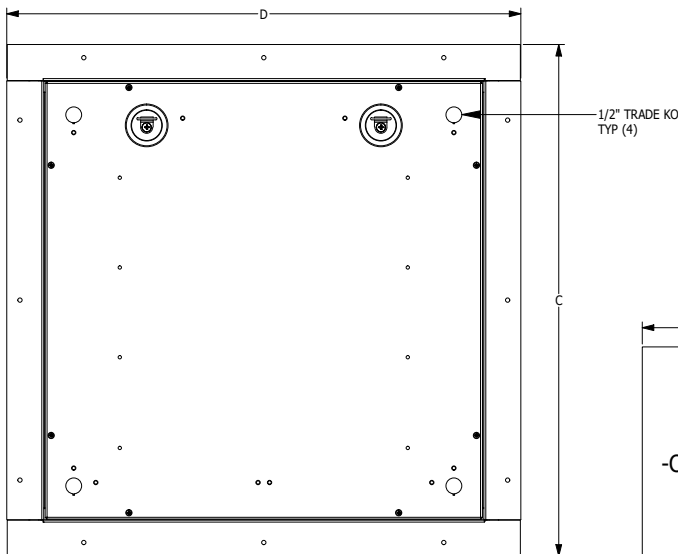
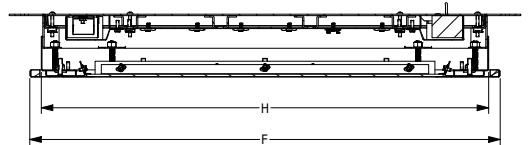
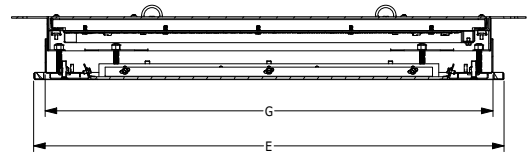
1x4, 2x2, 2x4 RECESSED LUMINAIRE WITH TOP ACCESS FOR 2" - 3" WALKABLE CEILINGS

PRODUCT DRAWINGS



DIMENSIONAL DATA

KL-WALKF LED REFERENCE DIMENSIONS									
SIZE	A	B	C	D	E	F	G	H	I
KL-WALKF 1X4	13.63"	49.31"	16.92"	52.75"	50.35"	14.69"	49.09"	13.44"	2.00" - 3.00"
KL-WALKF 2X2	25.06"	25.06"	28.38"	28.58"	26.13"	26.13"	24.88"	24.88"	2.00" - 3.00"
KL-WALKF 2X4	25.06"	49.31"	28.38"	52.75"	50.35"	26.13"	49.09"	24.88"	2.00" - 3.00"



INSTALLATION DETAIL