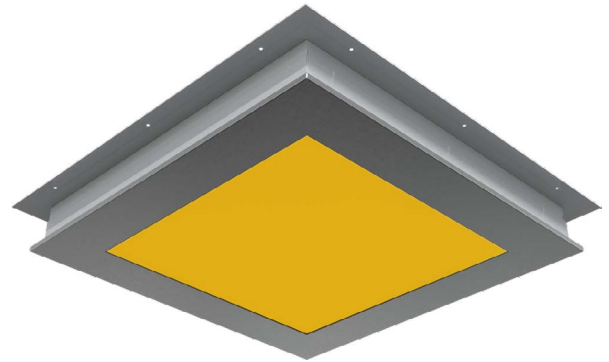


# Top Access Amber Cleanroom Walkable Luminaire: KL-WALKF-LED-AMBER

1x4, 2x2, 2x4 Amber/White Recessed Luminaire With Top Access For 2" - 3" Walkable Ceilings

- Recessed top access design for walkable ceilings
- Designed to withstand a direct static load of 840lbs (intended to be walked on)
- Flush top access design eliminates tripping hazard on service side of ceiling
- Field adjustable to accommodate 2" to 3" thick walkable ceilings
- Door frame has easy clean construction with no exposed fasteners
- Suitable for installation into ISO3 through ISO9 Cleanrooms
- Top cover is removable without breaking seal on environmental side
- B.A.A. & B.A.B.A Compliant & Made in the USA by a Family Owned US Corporation



DISCLAIMER: Although KURTZON has prepared the information contained in this document with all due care, KURTZON does not warrant or represent that the information is free from errors or omission. Whilst the information is considered to be true and correct at the date of publication, changes in circumstances after the time of publication may impact on the accuracy of the information. The information may change without notice and KURTZON is not in any way liable for the accuracy of any information printed and stored or in any way interpreted or used.

## ORDERING GUIDE

Series	Housing/Frame	Size	Row QTY	Amber LED	Row QTY	White LED	CCT/CRI	Voltage	Optics	Options
<b>KL-WALKF</b>				<b>YLED590</b>				<b>UNV</b>		
Series	Lens Frame Material	Size	Amber Light Source		White Light Source		CCT/CRI	Voltage	Optics	
			Row Qty	Amber LED	Row Qty	LED Type				
<b>KL-WALKF</b>	1 CRS Hsg, CRS Frame	1x4 1' x 4' Housing	1	<b>YLED590</b>	1	<b>LEDR</b> = Low Output <b>LEDH</b> = High Output	<b>835</b> = 80 CRI; 3500K <b>840</b> = 80 CRI; 4000K <b>850</b> = 80 CRI; 5000K <b>935</b> = 90 CRI; 3500K <b>940</b> = 90 CRI; 4000K <b>950</b> = 90 CRI; 5000K	UNV 120-277VAC	<b>FROST</b> 1/8" Frost Acrylic Lens <b>P12ACR</b> 1/8" Prismatic Acrylic (Inverted) <b>LEX</b> 1/8" Prismatic Polycarbonate (Inverted) <b>TG</b> 5/32" Prismatic Tempered Glass (Inverted) <b>2DBW</b> 1/8" Flat Diffused Acrylic With Bi-Directional Batwing Distribution <b>GH85</b> 1/8" Flat Diffused Acrylic With Glare Suppression Distribution	*Note P12ACR lens will be provided when no optics are selected
			2		2					
	3	3								
	1	1								
	2	2								
	3	3								
OR										
2x4 2' x 4' Housing	2 CRS Hsg, SS Frame	2x4 2' x 4' Housing	1	<b>YLED590</b>	<b>LEDR</b> = Low Output <b>LEDH</b> = High Output	<b>835</b> = 80 CRI; 3500K <b>840</b> = 80 CRI; 4000K <b>850</b> = 80 CRI; 5000K <b>935</b> = 90 CRI; 3500K <b>940</b> = 90 CRI; 4000K <b>950</b> = 90 CRI; 5000K	UNV 120-277VAC	<b>FROST</b> 1/8" Frost Acrylic Lens <b>P12ACR</b> 1/8" Prismatic Acrylic (Inverted) <b>LEX</b> 1/8" Prismatic Polycarbonate (Inverted) <b>TG</b> 5/32" Prismatic Tempered Glass (Inverted) <b>2DBW</b> 1/8" Flat Diffused Acrylic With Bi-Directional Batwing Distribution <b>GH85</b> 1/8" Flat Diffused Acrylic With Glare Suppression Distribution	*Note P12ACR lens will be provided when no optics are selected	
			2							2
			3							3
			4							4
6 LED Rows Max			6							

Note: 1X4 fixtures can accommodate up to 3 rows of LEDs total (This includes amber/white configurations)  
2X2 & 2X4 fixtures can accommodate up to 6 rows of LEDs total (This includes amber/white configurations)

Ordering Notes, If Applicable

Options	
<b>FC</b>	Fuse + Fuse Holder
<b>EM10</b>	Remote 10W Battery
<b>EM20</b>	Remote 20W Battery
<b>10KV</b>	10KV Parallel Surge Protection
<b>PxL</b>	Program To User Specified Lumens
<b>PxW</b>	Program To User Specified Watts
<b>AMW</b>	Anti-Microbial Powdercoat
<b>LCORD</b>	2 Pc Locking Cordset (Provide Specs)
<b>FZNC</b>	NSF2 Food Zone Non Contact
<b>WHT</b>	White Finished Door & Hsg

# Top Access Amber Cleanroom Walkable Luminaire: KL-WALKF-LED-AMBER

1x4, 2x2, 2x4 Amber/White Recessed Luminaire With Top Access For 2" - 3" Walkable Ceilings

## SPECIFICATIONS

**TOP COVER:** Constructed of 14ga steel with reinforcement braces to withstand intentional walk on loads up to 840lbs without damage to the luminaire. The top cover is the removable and replaceable from the service side of the walkable ceiling and has all of the electronic components.

**HOUSING:** Sturdy 14ga steel housing is designed to support the load on the top cover while additionally clamping the ceiling with the door frame. Field adjustable design allows for installation into ceilings ranging from 2" to 3" thickness available in nominal 1x4, 2x2, & 2x4 sizes.

**DOOR FRAME:** Door frame is the only exposed component on the environmental side of the ceiling. The door frame secures from the service side of the ceiling and clamps the ceiling with the housing. Die formed 1 piece construction without exposed fasteners allows for a smooth and easily cleanable design.

**OPTICS:** Standard P12 prismatic acrylic lens is provided when no other options are selected. All prismatic lensing options come with an inverted lens so the smooth side faces the room for easy cleaning. All optics are sealed to the door with NSF listed RTV silicone sealant. Other optics are available, consult factory for more information or options not listed.

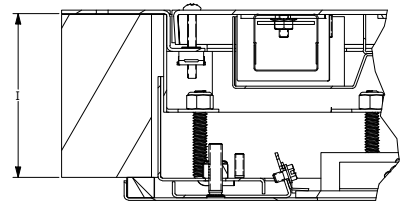
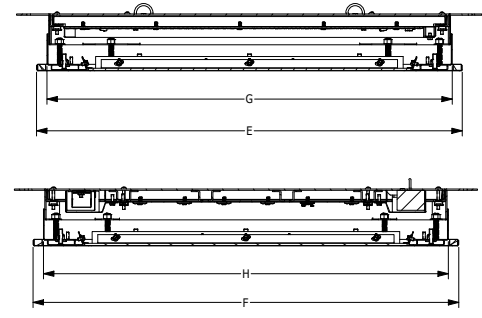
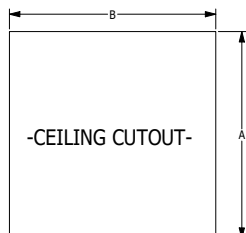
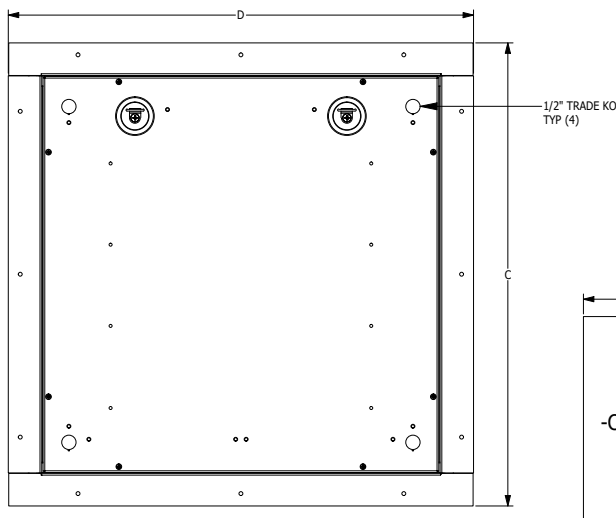
**FINISH:** Stainless steel door frames are satin polished unless WHT or AMW options are selected. All other materials are provided with gloss high reflectance white polyester powdercoat with 1000hr salt spray test per ASTM B117. AMW option provides a white anti-microbial polyester powder coat to all exposed surfaces.

**ELECTRONICS:** Fixture available with Amber only or Amber & White LED's, each color will be supplied with its own driver for dual switching. Amber LED's provide a narrow 590nm spectrum for wavelength sensitive applications. White high efficiency LEDs are commercially available & available in a wide variety of CRI and CCT. Highly efficient and consistent color maintained to 3 SDMC for color critical applications. B50/L70 and compliant with Zhaga recognized hole patterns. Drivers are class 2 UL Listed and factory programmable. The factory programmable 0-10v 5% dimming power supplies are intended for industrial applications and come with built in 6kv surge protection. Consult factory for options not listed on spec sheet for availability.

**LISTINGS & PERFORMANCE:** IP66 rated for dust and water ingress & suitable for 1700 PSI high pressure hoedowns. Suitable for use in ISO3-9 Cleanrooms. Designed and constructed to adhere to NSF2 splash zones and UL1598 wet location standard requirements. Drivers and LEDs are covered by a 5 year warranty, the remaining fixture is covered by a 10 year warranty. This product Series is both Build America Buy America (B.A.B.A.) & Buy American Act (B.A.A.) compliant. a prismatic acrylic lens, see options for other available lensing. Available in powdercoated CRS or polished stainless steel.

## DIMENSIONAL DATA

KL-WALKF LED REFERENCE DIMENSIONS									
SIZE	A	B	C	D	E	F	G	H	I
KL-WALKF 1X4	13.63"	49.31"	16.92"	52.75"	50.35"	14.69"	49.09"	13.44"	2.00" - 3.00"
KL-WALKF 2X2	25.06"	25.06"	28.38"	28.58"	26.13"	26.13"	24.88"	24.88"	2.00" - 3.00"
KL-WALKF 2X4	25.06"	49.31"	28.38"	52.75"	50.35"	26.13"	49.09"	24.88"	2.00" - 3.00"



INSTALLATION DETAIL

# Top Access Amber Cleanroom Walkable Luminaire: KL-WALKF-LED-AMBER

1x4, 2x2, 2x4 Amber/White Recessed Luminaire With Top Access For 2" - 3" Walkable Ceilings

## PRODUCT DRAWINGS



## ENERGY DATA- WHITE LED

KL-WALKF-WHITE										
ENCLOSURE SIZE	LIGHT PACKAGE	80 CRI (3000K - 5000K)				90 CRI (3500K, 4000K)				STANDARD DIMMING
		LUMENS	WATTS <sup>2</sup>	EFFICACY <sup>3</sup>	MAX AMB TEMP	LUMENS	WATTS <sup>2</sup>	EFFICACY <sup>3</sup>	MAX AMB TEMP <sup>4</sup>	
1X4	1/LEDR	2,270	19	119	40°C (104°F)	2,156	19	113	40°C (104°F)	0-10V 1%
1X4	2/LEDR	4,539	37	124	40°C (104°F)	4,312	37	118	40°C (104°F)	0-10V 1%
1X4	3/LEDR	6,808	53	128	40°C (104°F)	6,468	53	122	40°C (104°F)	0-10V 1%
1X4	2/LEDH	6,827	52	131	40°C (104°F)	6,486	52	124	40°C (104°F)	0-10V 1%
1X4	3/LEDH	10,241	77	134	40°C (104°F)	9,729	77	127	40°C (104°F)	0-10V 1%
2X2	1/LEDR	1,135	10	114	40°C (104°F)	1,080	10	108	40°C (104°F)	0-10V 1%
2X2	2/LEDR	2,269	20	112	40°C (104°F)	2,156	20	106	40°C (104°F)	0-10V 1%
2X2	2/LEDH	4,516	37	123	40°C (104°F)	4,290	37	117	40°C (104°F)	0-10V 1%
2X2	4/LEDR	4,539	37	124	40°C (104°F)	4,312	37	118	40°C (104°F)	0-10V 1%
2X2	6/LEDR	6,808	53	128	40°C (104°F)	6,468	53	122	40°C (104°F)	0-10V 1%
2X2	4/LEDH	9,031	70	130	40°C (104°F)	8,579	70	123	40°C (104°F)	0-10V 1%
2X2	6/LEDH	13,547	103	132	40°C (104°F)	12,870	103	125	40°C (104°F)	0-10V 1%
2X4	1/LEDR	2,270	19	119	40°C (104°F)	2,156	19	113	40°C (104°F)	0-10V 1%
2X4	2/LEDR	4,539	37	124	40°C (104°F)	4,312	37	118	40°C (104°F)	0-10V 1%
2X4	2/LEDH	6,827	52	131	40°C (104°F)	6,486	52	124	40°C (104°F)	0-10V 1%
2X4	4/LEDR	9,077	70	130	40°C (104°F)	8,623	70	124	40°C (104°F)	0-10V 1%
2X4	6/LEDR	13,615	103	132	40°C (104°F)	12,934	103	126	40°C (104°F)	0-10V 1%
2X4	4/LEDH	13,655	101	135	40°C (104°F)	12,972	101	128	40°C (104°F)	0-10V 1%
2X4	6/LEDH	20,482	154	133	40°C (104°F)	19,458	154	127	40°C (104°F)	0-10V 1%

<sup>1</sup> DELIVERED LUMEN DATA IS EXTRAPOLATED FROM MEASURED DATA @25C WITH NO EXTRA OPTIONS. VARIANCES WILL OCCUR WHEN OPTIONS ARE CHOSEN

<sup>2</sup> WATTAGE IS MEASURED WITH 4000K SELECTION @ 120VAC AND Tambient = 25C. WATTAGES MAY VARY WITH ALTERNATE CONFIGURATIONS

<sup>3</sup> EFFICACY CALCULATED USING 4000K CCT DATA.

<sup>4</sup> MAX AMBIENT TEMP RATING, NON-IC INSTALLATION. TEMP RATING MAY VARY WITH SPECIFIED DRIVERS OR ANY NON-STANDARD SELECTION

<sup>5</sup> 90 MINUTE 10W EMERGENCY DRIVER; LUMENS CALCULATED BASED ON FIXTURE EFFICACY.

# Top Access Amber Cleanroom Walkable Luminaire: KL-WALKF-LED-AMBER

1x4, 2x2, 2x4 Amber/White Recessed Luminaire With Top Access For 2" - 3" Walkable Ceilings

## ENERGY DATA- COLORED LED

KL-WALKF-AMBER							
ENCLOSURE SIZE	LED SELECTION	DIMMING	590nm (Amber)			AMBIENT TEMP RATING	
			LUMENS	WATTS	EFFICACY	MINIMUM	MAXIMUM <sup>3</sup>
1X4	1YLED	0-10V 1%	1,760	26	68	-20°C (-4°F)	40°C (104°F)
1X4	2YLED	0-10V 1%	3,520	52	68	-20°C (-4°F)	40°C (104°F)
1X4	3YLED	0-10V 1%	5,280	78	68	-20°C (-4°F)	40°C (104°F)
2X2	1YLED	0-10V 1%	880	13	68	-20°C (-4°F)	40°C (104°F)
2X2	2YLED	0-10V 1%	1,760	26	68	-20°C (-4°F)	40°C (104°F)
2X2	3YLED	0-10V 1%	2,640	39	68	-20°C (-4°F)	40°C (104°F)
2X2	4YLED	0-10V 1%	3,520	52	68	-20°C (-4°F)	40°C (104°F)
2X2	6YLED	0-10V 1%	5,280	78	68	-20°C (-4°F)	40°C (104°F)
2X4	1YLED	0-10V 1%	1,760	26	68	-20°C (-4°F)	40°C (104°F)
2X4	2YLED	0-10V 1%	3,520	52	68	-20°C (-4°F)	40°C (104°F)
2X4	3YLED	0-10V 1%	5,280	78	68	-20°C (-4°F)	40°C (104°F)
2X4	4YLED	0-10V 1%	7,040	104	68	-20°C (-4°F)	40°C (104°F)
2X4	6YLED	0-10V 1%	10,560	156	68	-20°C (-4°F)	40°C (104°F)

<sup>1</sup> DELIVERED LUMEN DATA IS EXTRAPOLATED FROM MEASURED DATA @25C WITH NO EXTRA OPTIONS. VARIANCES WILL OCCUR WHEN OTHER SELECTIONS ARE MADE

<sup>2</sup> WATTAGE IS MEASURED WITH LED 840 SELECTION @ 120vAC AND Tambient = 25C. WATTAGES WILL VARY AND INCREASE WHEN ALTERNATE OPTIONS ARE SELECTED

<sup>3</sup> MAX AMBIENT TEMP RATING, NON-IC INSTALLATON. TEMP RATING IS WITH NO OTHER OPTIONS SELECTED. WHITE LEDS ONLY SUITABLE FOR 40C AMBIENT

## COLOR LED RELATIVE DISTRIBUTION

