

# Cleanroom KL Tear Drop

Sealed 4' Linear Teardrop LED Luminaire. Surface Mounting to T-Bar Grid

- **Suitable for ISO 3-9 Cleanspaces**
- **Suitable for 209E 1-100,000 Cleanspaces**
- **ETL Listed for Wet Locations**
- **Suitable for Row Mounting with CRM option**
- **Luminaire mounts directly to Tbar Grid.**
- **Available with 590nm True Amber LEDs.**
- **Luminaire profile specifically designed for a low drag on laminar air flow applications**



DISCLAIMER: Although KURTZON has prepared the information contained in this document with all due care, KURTZON does not warrant or represent that the information is free from errors or omission. Whilst the information is considered to be true and correct at the date of publication, changes in circumstances after the time of publication may impact on the accuracy of the information. The information may change without notice and KURTZON is not in any way liable for the accuracy of any information printed and stored or in any way interpreted or used.

## ORDERING GUIDE

Series	Installation Type	Material	Size	Source	CCT	Voltage	Options
<b>KL</b>							
Series	Profile Type	Material	Size	Source	CCT	Voltage	Options
KL	AFV: Air Flow Vega Surface	1: White CRS Ext. & White CRS Int. 2: Polished 304 SS Ext. & White CRS Int. 3: Polished 304 SS Ext. & Polished 304 SS Int.	40: 4' Housing	White LED 1/LEDR  Amber LED 1/YLED590	83 CRI: 830 = 3000K CCT 835 = 3500K CCT 840 = 4000K CCT 850 = 5000K CCT  90+ CRI: 935 = 3500K CCT 940 = 4000K CCT	120V 277V UNV 347V*	FC: Fuse & Holder (One Supplied Per Circuit) EDL: -40F Electronic Driver CRM: Continuous Row Mounting TP: Stainless Steel Tamperproof Fasteners WHT: White Finished Stainless Steel PA: Linear Prismatic Clear Acrylic PxL: Programmed to User Specified Lumen Value PxW: Programmed to User Specified Wattage Value 10KV: 10KV Parallel Surge Protection (One Supplied Per Circuit) WHIP: Must Specify Length and Wire Qty

# Cleanroom KL Tear Drop

Sealed 4' Linear Teardrop LED Luminaire. Surface Mounting to T-Bar Grid

## SPECIFICATIONS

**HOUSING:** Double channel housing of 20Ga Cold Rolled Steel or 20Ga 304 Stainless Steel.

**END CAPS:** Precision stamped 20Ga 304 Stainless Steel end caps secured to housing with captive stainless steel pan head screws. See Options for Tamper resistant Torx drive stainless steel fasteners or hub assembly.

**GASKETS:** NSF Listed closed cell microcellular extruded KleanLock SealPro gasket with vulcanized corners making a one-piece oil and solvent resistant gasket system.

**LENS:** Extruded .125" thick frosted acrylic. See "Options" for more choices.

**LEDS:** Commercially available in a wide variety of Color Temperature (CCT), FLUX, and CRI. Highly efficient and consistent color maintained to 3 SDMC for color critical applications. B50/L70 and compliant with Zhaga recognized hole patterns. Consult factory for LED options or configurations not listed below.

**DRIVERS:** Standard Universal Voltage Class 2 drivers are 0-10v Dimmable to 1% for most LED configurations. They come with at least 2.5Kv surge protection, have less than 10% THD at max load, Ballast Factor Greater than .95 and are programmable to match specific lumen or wattage requirements. Drivers with higher input voltage ratings are available, consult factory for driver specifications.

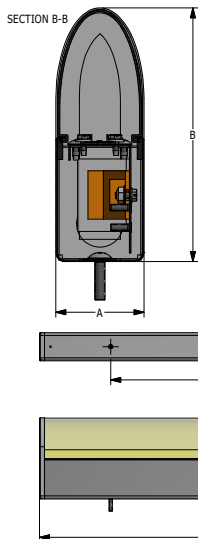
**REFLECTOR:** Die formed metal with high reflectance white polyester powder coat finish. Typical reflectivity 92%.

**INSTALLATION:** Two .312" holes for surface mounting. Supply entry through back side of housing. Joiner bands provided for continuous row mounting (See Option: CRM). Please specify number of fixtures in each run.

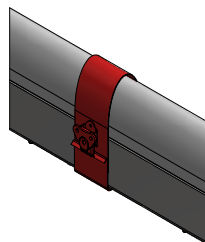
**FINISH:** White powder coat finish (1,000 hour salt spray test) or 4-B (satin polish) stainless steel finish. See Options for white powder coated stainless.

**LISTINGS:** ETL listed per UL\_1598 for wet locations. Certified ISO-14644-1 for class 3 through class 9 cleanspaces. Certified Fed Std 209E for Class 1 through Class 100,000 cleanspaces. Drivers and LEDs are covered by a 5 year warranty, the remaining fixture is covered by a 10 year warranty.

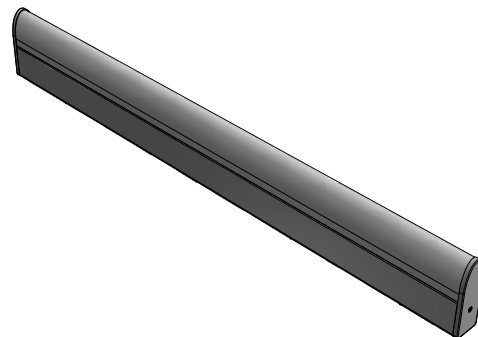
## PRODUCT DRAWINGS



### CRM JOINER BAND



AFV PROFILE REFERENCE DIMENSIONS (LED ONLY)						
SIZE	DIM A	DIM B	DIM C	DIM D	DIM E	DIM F
40	2.13"	6.13"	46.70"	36.00"	10.50"	82.50"



# Cleanroom KL Tear Drop

Sealed 4' Linear Teardrop LED Luminaire. Surface Mounting to T-Bar Grid

## ENERGY DATA

TEARDROP PROFILE LED (APPROX <sup>1</sup> LUMENS DELIVERED)								
ENCLOSURE SIZE	LIGHT PACKAGE	CRI OR COLOR	DIMMING	FROSTED LENS			AMBIENT TEMP RATING	
				LUMENS	WATTS <sup>2</sup>	EFFICACY <sup>3</sup> (Lm/W)	MINIMUM	MAXIMUM <sup>4</sup>
40	1LEDR	83	0-10V 1%	3,704	29	130	-20°C (-4°F)	40°C (104°F)
40	1LEDR	90+ CRI	0-10V 1%	3,200	31	103	-20°C (-4°F)	40°C (104°F)
40	1YLED	590nm AMBER	0-10V 1%	3,000	31	97	-20°C (-4°F)	40°C (104°F)

<sup>1</sup> DELIVERED LUMEN DATA IS EXTRAPOLATED FROM MEASURED DATA @25C WITH NO EXTRA OPTIONS. VARIANCES WILL OCCUR WHEN OTHER SELECTIONS ARE MADE

<sup>2</sup> WATTAGE IS MEASURED WITH LED 840 SELECTION @ 120vAC AND Tambient = 25C. WATTAGES WILL VARY AND INCREASE WHEN ALTERNATE OPTOINS ARE SELECTED

## PHOTOMETRICS

### KL-AFV-1-40-1LEDR840-UNV

Report No: 19810  
 Total Lumens: 3,704  
 Wattage: 28.563  
 Efficacy: 129.7 (Lumens Per Watt)  
 Fixture Size: 4'  
 Key:  
 - - - - 0  
 · · · · 45  
 ———— 90

