

# Cleanroom KL-FGPA Troffers - Tunable White

2x4 High Efficiency LED Luminaires with Plenum Access



- **Rated IP66**
- **Suitable for ISO 3-9 Cleanspaces**
- **Suitable for 209E class 1-100,000 Cleanspaces**
- **ETL listed for Wet Locations**
- **One piece overlapping doorframe**
- **Robotically seam welded housing**
- **Tunable White 2700k - 6500k CCT**
- **Available With DALI Or 0-10V Controls**
- **Access to plenum space using sealed access panel in housing.**
- **One Housing Suitable for Flange and Grid Installation.**
- **Made in the USA by a Family Owned US Corporation**



DISCLAIMER: Although KURTZON has prepared the information contained in this document with all due care, KURTZON does not warrant or represent that the information is free from errors or omission. While the information is considered to be true and correct at the date of publication, changes in circumstances after the time of publication may impact on the accuracy of the information. The information may change without notice and KURTZON is not in any way liable for the accuracy of any information printed and stored or in any way interpreted or used.

## ORDERING GUIDE

Series	Installation Type	Material	Size	Source	CRI/CCT	Control	Voltage	Options
<b>KL</b>								
<b>KL</b>	<b>FGPA:</b> Recessed Luminaire for Grid and Flange with Plenum Access	4: White Alum Hsg. & White AM 430 SS Door 5: White Alum Hsg. & White AM Alum Door 7: White Alum Hsg. & White AM CRS Door	2x4: Nominal 2'x4' Housing	2/LEDTW 3/LEDTW 4/LEDTW	827/865: 80 CRI; 2700k-6500k CCT	0-10v Analog Dimming 10V-CON: Continuous CCT 0-10v dimming 10V-WD: Warm Dim 0-10V dimming DALI Digital Dimming DAL-CON: Cont. CCT DALI dimming	UNV	FF: Fuse & Holder EM10: 10W Integral LED EM (Specify Input Voltage) EM20: 20W Remote LED EM (Specify Input Voltage) WHT: White Finished Door & HSG PxL: Programmed to User Specified Lumen Value. PxW: Programmed to User Specified Wattage Value. 10KV: 10KV Parallel Surge Protection WHIP: Must specify Length, Type, Wire Qty LEX: .125" Prismatic Polycarbonate A19: .156" Prismatic P19 Pattern Clear Acrylic .125 FROST: 1/8" Frost Acrylic Lens OCCMW: Internal microwave OCC Sensor

# Cleanroom KL-FGPA Troffers - Tunable White

2x4 High Efficiency LED Luminaires with Plenum Access

## SPECIFICATIONS

**HOUSING:** Welded .050" thick aluminum construction. Hole free housing with flattened knockouts and a large plenum access plate hinged to housing by (2) aircraft cables allowing simple access to the area above the ceiling.

**DOOR FRAME:** One piece door frame with welded corners overlaps the fixture allowing the NSF approved microcellular gasket to seal to the mounting surface. Door frame is hinged by aircraft cables and is supplied with captive stainless steel flush head screws to allow easy wiping of the surface. Available in 20Ga 304 Polished SS, or 18Ga Powder coated CRS.

**GASKETS:** NSF Listed closed cell microcellular extruded KleanLock SealPro gasket with vulcanized corners making a one-piece oil and solvent resistant gasket system.

**LENS:** Standard Lens provided is a RF Shielded .125" Symmetric P12 Acrylic Lens. ASY option provides RF Shielded Asymmetric distribution lens with frost overlay.

**LEDS:** Commercially available minimum 80 CRI 2 channel LED modules use 2700K and 6500K chips to mix color in order to achieve a desired color temperature. Modules have rated lifetime of L70 > 50,000 hrs and efficacy of 165Lm/W. See LED options to specify a custom range of Color temperatures. Consult factory for lumen output configurations not listed on spec sheets.

**DRIVERS:** Dual Channel Programmable Drivers make color tuning simple. Available in 0-10v Analog Dimming or DALI digital dimming. The 0-10v continuous dimming method uses two sets of dimming wires. 1 set of dimming wires controls the luminous flux while maintaining consistent color and the other set controls the color in a linear dimming curve. 0-10v is also available as warm dimming that uses 1 set of dimming wires that adjust both intensity and color simultaneously. Alternately control is available with DALI Digital Dimming as well.

**REFLECTOR:** Die formed metal with high reflectance white polyester powder coat finish. Typical reflectivity 92%.

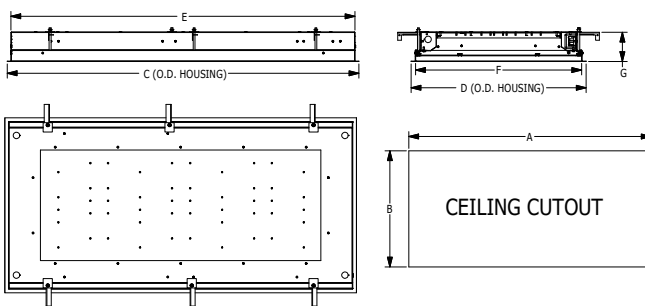
**INSTALLATION:** Fixtures are supplied with (4) .875" flattened and silicone sealed knockouts for wiring. Recessed housings are supplied with (6) swing out toggle arms and are available for row mounting end to end. Housings fit most 1.0" and 1.5" Tbar grid ceilings, must verify with details below.

**FINISH:** Gloss white high reflectance 1000 hr. salt spray polyester powder coat finish standard for all recessed housings. Stainless steel doorframes are satin polished unless option WHT is chosen.

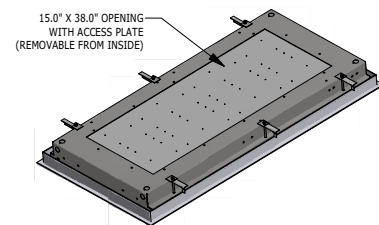
**LISTINGS:** IP66 rated for dust and water ingress. Suitable for 1700 PSI high pressure hosedowns. ETL listed per UL\_1598 for wet locations. Chicago Plenum Rated. Certified ISO-14644-1 for class 3 through class 9 cleanspaces. Certified Fed Std 209E for Class 1 through Class 100,000 cleanspaces. NSF2 Listed for Food Zones. Drivers and LEDs are covered by a 5 year warranty, the remaining fixture is covered by a 10 year warranty.

## PRODUCT DRAWINGS

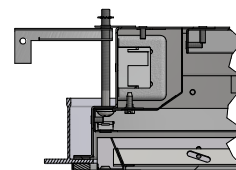
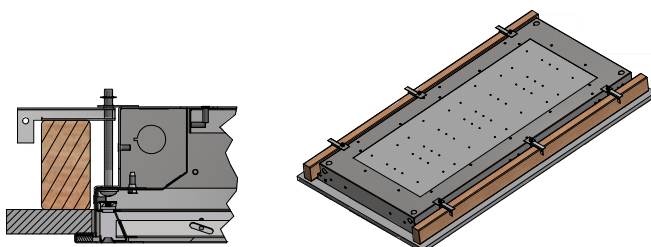
PLENUM ACCESS REFERENCE DIMENSIONS							
SIZE	DIM A	DIM B	DIM C	DIM D	DIM E	DIM F	DIM G
2X4	46.90"	22.90"	47.63"	23.70"	46.6"	22.50"	4.00"



Grid Installation Detail



Flange Installation Detail



# Cleanroom KL-FGPA Troffers - Tunable White

2x4 High Efficiency LED Luminaires with Plenum Access

## ENERGY DATA

PA OVERLAP-FG-LED TROFFER (APPROX <sup>1</sup> LUMENS DELIVERED)						
ENCLOSURE SIZE	LIGHT PACKAGE	80 CRI (3000K - 5000K)			MAX AMB TEMP	CCT RANGE
		LUMENS	WATTS <sup>2</sup>	EFFICACY <sup>3</sup>		
2X4	2LEDTW	7,800	68	115	40°C (104°F)	2700k - 6500k
2X4	3LEDTW	11,700	103	114	40°C (104°F)	2700k - 6500k
2X4	4LEDTW	15,600	135	116	40°C (104°F)	2700k - 6500k
2X4	EM10	1140-1160*	4	NA	40°C (104°F)	NA

- 1 DELIVERED LUMEN DATA IS CALCULATED BASED ON STATIC WHITE PHOTOMETRY @ 4000K CCT
- 2 WATTAGE IS MEASURED WITH 4000K SELECTION @ 120vAC AND Tambient = 25C. WATTAGES MAY VARY WITH ALTERNATE CONFIGURATIONS
- 3 EFFICACY CALCULATED USING 4000K CCT DATA.
- 4 MAX AMBIENT TEMP RATING, NON-IC INSTALLATION. TEMP RATING MAY VARY WITH SPECIFIED DRIVERS OR ANY NON STANDARD SELECTION
- 5 90 MINUTE 10W EMERGENCY DRIVER; LUMENS CALCULATED BASED ON FIXTURE EFFICACY.
- 6 EM10 DELIVERED LUMENS = (DELIVERED LUMENS/LUMINAIRE WATTS)\*10