

Circadian Cleanroom KL-FGPA Troffers

2x4 BIOS® LED Luminaires with Plenum Access



- **Rated IP66**
- **Suitable for ISO 3-9 Cleanspaces**
- **Suitable for 209E class 1-100,000 Cleanspaces**
- **ETL listed for Wet Locations**
- **One piece overlapping doorframe**
- **Robotically seam welded housing**
- **Access to plenum space using sealed access panel in housing.**
- **One Housing Suitable for Flange and Grid Installation.**
- **Made in the USA by a Family Owned US Corporation**
- **This Kurtzon product is illuminated by BIOS® to provide healthy, low energy lighting that promotes improved sleep, better health and well-being**



DISCLAIMER: Although KURTZON has prepared the information contained in this document with all due care, KURTZON does not warrant or represent that the information is free from errors or omission. While the information is considered to be true and correct at the date of publication, changes in circumstances after the time of publication may impact on the accuracy of the information. The information may change without notice and KURTZON is not in any way liable for the accuracy of any information printed and stored or in any way interpreted or used.

ORDERING GUIDE

Series	Installation Type	Material	Size	Row Qty.	LED Type	CCT/Dim Type	Voltage	Options
KL								
Series	Installation Type	Material	Size	Light Source			Voltage	Options
				Row Qty.	LED Type	CCT/Dim Type		
KL	FGPA: Recessed Luminaire for Grid and Flange with Plenum Access	4: White Alum Hsg. & White AM 430 SS Door	2x4: Nominal 2'x4' Housing	1	LED-XBL1	835BIOS-DY	UNV	FF: Fuse & Holder
		5: White Alum Hsg. & White AM Alum Door		2	LED-XBL2	840BIOS-DY		EM10: 10W Integral LED EM (Specify Input Voltage)
		7: White Alum Hsg. & White AM CRS Door		3	LED-XBL3	835BIOS-ST		EM20: 20W Remote LED EM (Specify Input Voltage)
				4		840BIOS-ST		WHT: White Finished Door & HSG
								PxL: Programmed to User Specified Lumen Value.
								PxW: Programmed to User Specified Wattage Value.
								10KV: 10KV Parallel Surge Protection
								WHIP: Must specify Length, Type, Wire Qty
								LEX: .125" Prismatic Polycarbonate
								A19: .156" Prismatic P19 Pattern Clear Acrylic
								.125 FROST: 1/8" Frost Acrylic Lens
								OCCMW: Internal microwave OCC Sensor

Notes:

BIOS-DY - Dynamic dimming module **BIOS-ST** - Static dimming module

Circadian Cleanroom KL-FGPA Troffers

2x4 BIOS® LED Luminaires with Plenum Access

SPECIFICATIONS

HOUSING: Welded .050" thick aluminum construction. Hole free housing with flattened knockouts and a large plenum access plate hinged to housing by (2) aircraft cables allowing simple access to the area above the ceiling.

DOOR FRAME: One piece door frame with welded corners overlaps the fixture allowing the NSF approved microcellular gasket to seal to the mounting surface. Door frame is hinged by aircraft cables and is supplied with captive stainless steel flush head screws to allow easy wiping of the surface. Available in 20Ga 304 Polished SS, or 18Ga Powder coated CRS.

GASKETS: NSF Listed closed cell microcellular extruded KleanLock SealPro gasket with vulcanized corners making a one-piece oil and solvent resistant gasket system.

LENS: Standard Lens provided is a RF Shielded .125" Symmetric P12 Acrylic Lens. ASY option provides RF Shielded Asymmetric distribution lens with frost overlay.

LEDS: Provided with BIOS® LED modules that are available in 3 different luminous flux intensities. When Dynamic dimming is specified, a bio dimmer is included with each driver inside the fixture. BIOS® LEDs have been expertly crafted to perform as advertised. Engineered to only include the highest quality components, the LEDs are backed by a limited 5 year warranty. See last page for more information on how BIOS® works.

DRIVERS: Standard Universal Voltage Class 2 drivers are 0-10v Dimmable to 1% for most LED configurations, and rated -20C (-4F). They come with at least 2.5Kv surge protection, have less than 10% THD at max load, Ballast Factor Greater than .95 and are programmable to match specific lumen or wattage requirements. Drivers with higher input voltage ratings are available, consult factory for driver specifications.

REFLECTOR: Die formed metal with high reflectance white polyester powder coat finish. Typical reflectivity 92%.

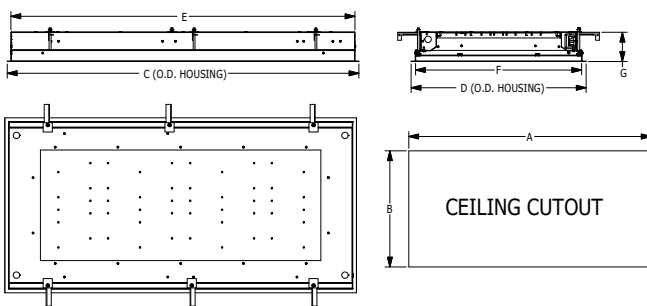
INSTALLATION: Fixtures are supplied with (4) .875" flattened and silicone sealed knockouts for wiring. Recessed housings are supplied with (6) swing out toggle arms and are available for row mounting end to end. Housings fit most 1.0" and 1.5" Tbar grid ceilings, must verify with details below.

FINISH: Gloss white high reflectance 1000 hr. salt spray polyester powder coat finish standard for all recessed housings. Stainless steel doorframes are satin polished unless option WHT is chosen.

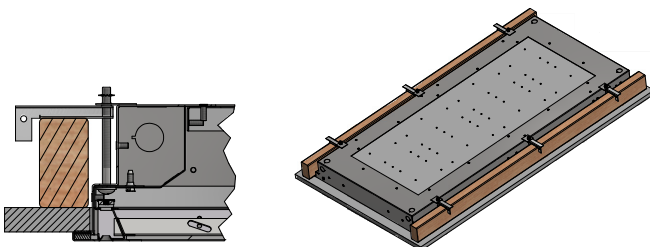
LISTINGS: IP66 rated for dust and water ingress. Suitable for 1700 PSI high pressure hosedowns. ETL listed per UL_1598 for wet locations. Chicago Plenum Rated. Certified ISO-14644-1 for class 3 through class 9 cleanspaces. Certified Fed Std 209E for Class 1 through Class 100,000 cleanspaces. NSF2 Listed for Food Zones. Drivers and LEDs are covered by a 5 year warranty, the remaining fixture is covered by a 10 year warranty.

PRODUCT DRAWINGS

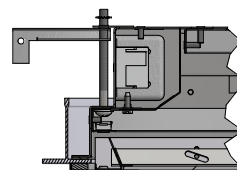
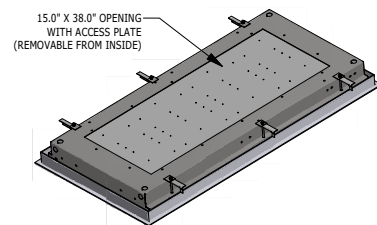
PLENUM ACCESS REFERENCE DIMENSIONS						
SIZE	DIM A	DIM B	DIM C	DIM D	DIM E	DIM F
2X4	46.90"	22.90"	47.63"	23.70"	46.6"	22.50"
						4.00"



Flange Installation Detail



Grid Installation Detail



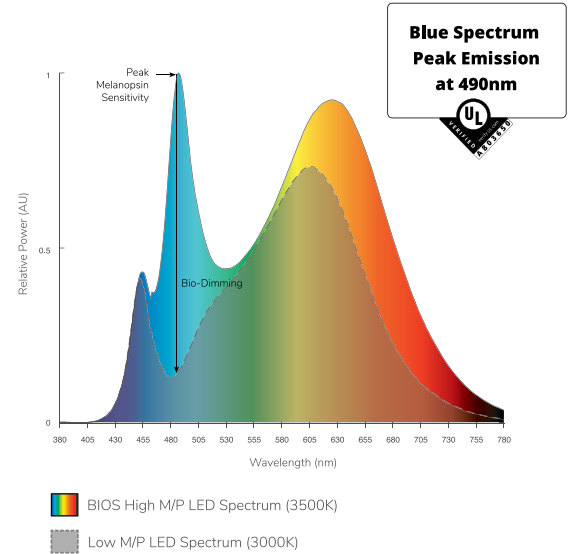
Circadian Cleanroom KL-FGPA Troffers

2x4 BIOS® LED Luminaires with Plenum Access

ENERGY DATA - BIOS® LED

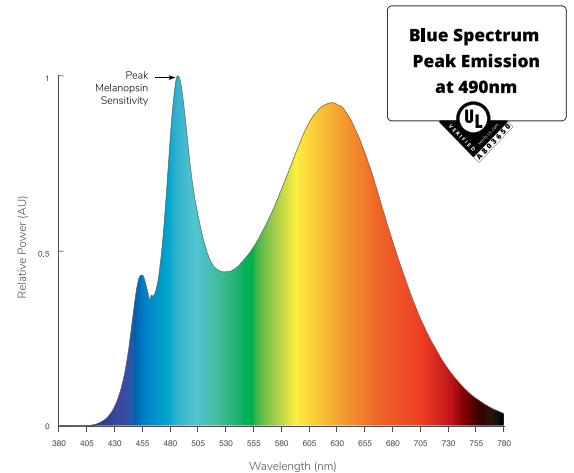
BIOS® OVERLAP DOOR FRAME TROFFERS						
ENCLOSURE SIZE	LIGHT PACKAGE	PERFORMANCE SPECS			AMBIENT TEMP	
		LUMENS	WATTS	EFFICACY	MIN	MAX
2X4	1/LED-XBL1	3,145	44	71	-20C (-4F)	40C (104F)
2X4	1/LED-XBL2	4,314	58	74	-20C (-4F)	40C (104F)
2X4	2/LED-XBL1	6,290	88	71	-20C (-4F)	40C (104F)
2X4	1/LED-XBL3	6,588	88	75	-20C (-4F)	40C (104F)
2X4	2/LED-XBL2	8,628	116	74	-20C (-4F)	40C (104F)
2X4	3/LED-XBL1	9,435	132	71	-20C (-4F)	40C (104F)
2X4	4/LED-XBL1	12,580	176	72	-20C (-4F)	40C (104F)
2X4	3/LED-XBL2	12,942	174	74	-20C (-4F)	40C (104F)
2X4	2/LED-XBL3	13,177	176	75	-20C (-4F)	40C (104F)
2X4	4/LED-XBL2	17,256	231	75	-20C (-4F)	40C (104F)
2X4	3/LED-XBL3	19,765	264	75	-20C (-4F)	40C (104F)
2X4	4/LED-XBL3	26,353	351	75	-20C (-4F)	40C (104F)

PHOTOMETRICS - DYNAMIC



Dynamic Board Spectral Power Distribution (3500K)

PHOTOMETRICS - STATIC



Static Board Spectral Power Distribution (3500K)

Circadian Cleanroom KL-FGPA Troffers

2x4 BIOS® LED Luminaires with Plenum Access

HOW BIOS® WORKS

Production of melatonin, the hormone that helps us to sleep, is regulated by the ipRGC, a non-visual photoreceptor in the human eye. The wavelength of blue sky light at 490nm, present in sunlight, prevents melatonin production during the day. These signals are crucial in allowing humans to distinguish between day and night, promoting better sleep, health and well-being.

**Blue Spectrum
Peak Emission
at 490nm**




DYNAMIC LIGHT ENGINE

The SkyBlue® Dynamic Light Engine automatically calibrates the light level, reducing melanopic lux while keeping photopic lux at a constant. Dynamic light engines are paired with the current sensing smart BIOS® Bio-Dimming module allowing it operate using any single channel CC LED driver, using any dimming interface. Available in 3500K (dim to 3000K), and 4000K (dim to 3500K).

STATIC LIGHT ENGINE

The SkyBlue® Static Spectrum Light Engine delivers the industry's best melanopic-to-photopic (m/p) ratio, with R9 greater than 90 at each color temperature. Easily integrated into existing LED fixtures and compatible with all LED drivers, the SkyBlue® Static Spectrum Light Engine is the ideal replacement for static color light fixtures. Static light engines have the full output of BIOS® SkyBlue® all the time and the peak cannot be adjusted.

DIMMER SETTINGS WITH BIOS® DYNAMIC DIMMING TECHNOLOGY

	DIMMER SETTING	BIOS® SKYBLUE®	LIGHT OUTPUT
	100% (full on)	100%	100%
	99%-51%	100%-0%	100%-90%
	50%	No BIOS®	~90%
	49%-0%	No BIOS®	Linear Dimming

BIOS® SkyBlue® operates at 100% when the light output is at 100%, for maximum circadian impact. As the light is dimmed, BIOS® SkyBlue® dims until 50% is reached when the BIOS® SkyBlue® is no longer present.