

# Cleanroom KL Top Relamp Troffers - Tunable White

2x4 & 1x4 High Efficiency LED Luminaires with Top and Bottom Access



- **Rated IP66**
- **Suitable for ISO 3-9 Cleanspaces**
- **Suitable for 209E class 1-100,000 Cleanspaces**
- **ETL listed for Wet Locations**
- **One piece overlapping doorframe**
- **Robotically seam welded housing**
- **Tunable White 2700k - 6500k CCT**
- **Available With DALI Or 0-10V Controls**
- **Service to Luminaire from Plenum Side of ceiling**
- **One Housing Suitable for Flange and Grid Installation.**
- **Made in the USA by a Family Owned US Corporation**



DISCLAIMER: Although KURTZON has prepared the information contained in this document with all due care, KURTZON does not warrant or represent that the information is free from errors or omission. While the information is considered to be true and correct at the date of publication, changes in circumstances after the time of publication may impact on the accuracy of the information. The information may change without notice and KURTZON is not in any way liable for the accuracy of any information printed and stored or in any way interpreted or used.

## ORDERING GUIDE

Series	Installation Type	Material	Size	Source	CCT	Control:	Voltage	Options
KL	R/TR: Recessed Top Relamp (Suitable for Flange and Grid Installations)	1: White CRS Hsg. & White CRS Door 2: White CRS Hsg. & Polished 304 SS Door	1x4: 1' x 4' Housing	1/LEDTW	827/865: 80 CRI; 2700k-6500k CCT	0-10v Analog Dimming  10V-CON: Continuous CCT 0-10v dimming  10V-WD: Warm Dim 0-10V dimming  DALI Digital Dimming  DAL-CON: Cont. CCT DALI dimming	UNV	FF: Fuse & Holder EM10: 10W Integral LED EM (Specify Input Voltage) EM20: 20W Remote LED EM (Specify Input Voltage) WHT: White Finished Door & HSG PxL: Programmed to User Specified Lumen Value. PxW: Programmed to User Specified Wattage Value. 10KV: 10KV Parallel Surge Protection WHIP: Must specify Length, Type, Wire Qty LEX: .125" Prismatic Polycarbonate A19: .156" Prismatic P19 Pattern Clear Acrylic .125 FROST: 1/8" Frost Acrylic Lens OCCMW: Internal microwave OCC Sensor 6IT: 6in Toggle for 6" Thick Ceilings
			2x4: 2' x 4' Housing	2/LEDTW 3/LEDTW 4/LEDTW				

# Cleanroom KL Top Relamp Troffers - Tunable White

2x4 & 1x4 High Efficiency LED Luminaires with Top and Bottom Access

## SPECIFICATIONS

**HOUSING:** One piece, hole free, robotically seam welded 20Ga CRS housing has flattened knockouts for a superior seal. Gasketed top cover allows all services from above. Fully white powder coated.

**DOOR FRAME:** One piece door frame with welded corners overlaps the fixture allowing the NSF approved microcellular gasket to seal to the mounting surface. Door frame is hinged by aircraft cables and is supplied with captive stainless steel flush head screws to allow easy wiping of the surface. Available in 20Ga 304 Polished SS, or 18Ga Powder coated CRS.

**TOP COVER:** Gasketed top cover is accessible from the plenum space only. Hinged to housing and then mechanically secured with 8-32 screws. Not suitable to be walked on.

**GASKETS:** NSF Listed closed cell microcellular extruded KleanLock SealPro gasket with vulcanized corners making a one-piece oil and solvent resistant gasket system.

**LENS:** Impact resistant .135" thick virgin acrylic with P12 prismatic pattern inverted. Sealed to door with NSF listed RTV silicone. See "Options" for other choices.

**LEDS:** Commercially available minimum 80 CRI 2 channel LED modules use 2700K and 6500K chips to mix color in order to achieve a desired color temperature. Modules have rated lifetime of L70 > 50,000 hrs and efficacy of 165Lm/W. See LED options to specify a custom range of Color temperatures. Consult factory for lumen output configurations not listed on spec sheets.

**DRIVERS:** Dual Channel Programmable Drivers make color tuning simple. Available in 0-10v Analog Dimming or DALI digital dimming. The 0-10v continuous dimming method uses two sets of dimming wires. 1 set of dimming wires controls the luminous flux while maintaining consistent color and the other set controls the color in a linear dimming curve. 0-10v is also available as warm dimming that uses 1 set of dimming wires that adjust both intensity and color simultaneously. Alternately control is available with DALI Digital Dimming as well.

**REFLECTOR:** Die formed metal with high reflectance white polyester powder coat finish. Typical reflectivity 92%.

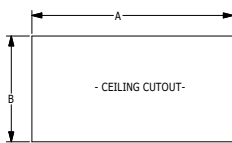
**INSTALLATION:** Suitable for Grid or Flanged installation (must specify). Accommodates most 1" and 1.5" T-Bar Grid see below installation details. Four adjustable toggle arms with holes for seismic support wire attachment. Supply entry via 1/2" trade size flattened knockouts located at the ends of the fixture.

**FINISH:** Gloss white high reflectance 1000 hr. salt spray polyester powder coat finish standard for all recessed housings. Stainless steel doorframes are satin polished unless option WHT is chosen.

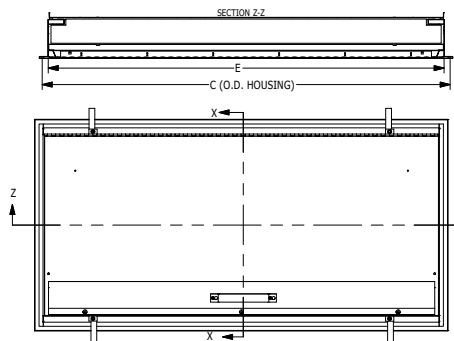
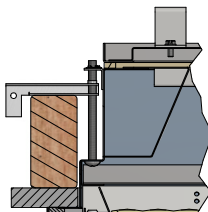
**LISTINGS:** IP66 rated for dust and water ingress. Suitable for 1700 PSI high pressure hosedowns. ETL listed per UL\_1598 for wet locations. Chicago Plenum Rated. Certified ISO-14644-1 for class 3 through class 9 cleanspaces. Certified Fed Std 209E for Class 1 through Class 100,000 cleanspaces. NSF2 Listed for Food Zones. Drivers and LEDs are covered by a 5 year warranty, the remaining fixture is covered by a 10 year warranty.

## PRODUCT DRAWINGS

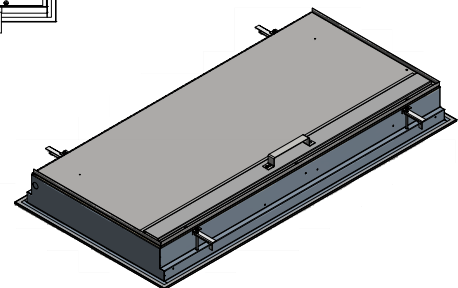
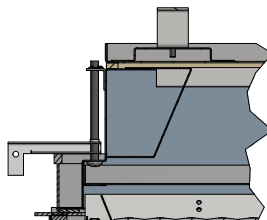
RECESSED TOP RELAMP REFERENCE DIMENSIONS						
SIZE	DIM A	DIM B	DIM C	DIM D	DIM E	DIM F
2x4	47.00"	23.00"	47.63"	23.69"	46.50"	22.50"
1x4	47.00"	11.00"	47.63"	11.69"	46.50"	10.50"



Flange Installation Detail



Grid Installation Detail



01-CB-L-TR OVERLAPPING 1x4 DWG. DATE: 9/04/17

# Cleanroom KL Top Relamp Troffers - Tunable White

2x4 & 1x4 High Efficiency LED Luminaires with Top and Bottom Access

## ENERGY DATA

TR OVERLAP-FG-LED TROFFER (APPROX <sup>1</sup> LUMENS DELIVERED)						
ENCLOSURE SIZE	LIGHT PACKAGE	80 CRI (3000K - 5000K)			MAX AMB TEMP	CCT RANGE
		LUMENS	WATTS <sup>2</sup>	EFFICACY <sup>3</sup>		
1x4	1LEDTW	3,450	34	101	40°C (104°F)	2700k - 6500k
1x4	2LEDTW	7,050	68	104	40°C (104°F)	2700k - 6500k
1x4	EM10	1010-1040*	4	NA	40°C (104°F)	NA
2X4	2LEDTW	7,800	68	115	40°C (104°F)	2700k - 6500k
2X4	3LEDTW	11,700	103	114	40°C (104°F)	2700k - 6500k
2X4	4LEDTW	15,600	135	116	40°C (104°F)	2700k - 6500k
2X4	EM10	1140-1160*	4	NA	40°C (104°F)	NA

- 1 DELIVERED LUMEN DATA IS CALCULATED BASED ON STATIC WHITE PHOTOMETRY @ 4000K CCT
- 2 WATTAGE IS MEASURED WITH 4000K SELECTION @ 120vAC AND Tambient = 25C. WATTAGES MAY VARY WITH ALTERNATE CONFIGURATIONS
- 3 EFFICACY CALCULATED USING 4000K CCT DATA.
- 4 MAX AMBIENT TEMP RATING, NON-IC INSTALLATION. TEMP RATING MAY VARY WITH SPECIFIED DRIVERS OR ANY NON STANDARD SELECTION
- 5 90 MINUTE 10W EMERGENCY DRIVER; LUMENS CALCULATED BASED ON FIXTURE EFFICACY.
- 6 EM10 DELIVERED LUMENS = (DELIVERED LUMENS/LUMINAIRE WATTS)\*10