

Cleanroom KL Tear Drop

Sealed 4' Linear Teardrop Luminaire. Surface Mounting to T-Bar Grid

- **Suitable for ISO 3-9 Cleanspaces**
- **Suitable for 209E 1-100,000 Cleanspaces**
- **Suitable for Laminar air flow**
- **UL Listed for Wet Locations**
- **Suitable for Row Mounting with CRM option**
- **Luminaire mounts directly to Tbar Grid.**



DISCLAIMER: Although KURTZON has prepared the information contained in this document with all due care, KURTZON does not warrant or represent that the information is free from errors or omission. Whilst the information is considered to be true and correct at the date of publication, changes in circumstances after the time of publication may impact on the accuracy of the information. The information may change without notice and KURTZON is not in any way liable for the accuracy of any information printed and stored or in any way interpreted or used.

ORDERING GUIDE

Series	Installation Type	Material	Size	Lamps	Voltage	Options
KL						
KL	AFV: Air Flow Vega Surface	1: White CRS Ext. & White CRS Int. 2: Polished 304 SS Ext. & White CRS Int. 3: Polished 304 SS Ext. & Polished 304 SS Int.	40: 4' Housing	1/T5: F28WT5 1/T5HO: F54WT5HO	120V 277V UNV 347V*	FC: Fuse & Holder (One Supplied Per Circuit) EBL: -20F Electronic Ballast WHT: White Finished Stainless Steel SW: Wet Locatoin Hub Supplied (not installed) TP: Stainless Steel Tamperproof Fasteners CRM: Continuous Row Mounting PA: Linear Prismatic Clear Acrylic 10KV: 10KV Parallel Surge Protection (One Supplied Per Circuit) WHIP: Must Specify Length and Wire Qty

Cleanroom KL Tear Drop

Sealed 4' Linear Teardrop Luminaire. Surface Mounting to T-Bar Grid

SPECIFICATIONS

HOUSING: Double channel housing of 20Ga Cold Rolled Steel, 20Ga 304 Stainless Steel, or .040" 3003 Aluminum construction.

END CAPS: Precision stamped 20Ga 304 Stainless Steel end caps secured to housing with captive stainless steel pan head screws. See Options for Tamper resistant Torx drive stainless steel fasteners.

GASKETS: NSF Listed closed cell microcellular extruded KleanLock SealPro gasket with vulcanized corners making a one-piece oil and solvent resistant gasket system.

LENS: Extruded .125" thick frosted acrylic. See "Options" for more choices.

LAMPS: Suitable for most T8, T5, and T5HO lamps. (By others)

ELECTRICAL: Standard Class P Ballast - Electronic < 10% THD, high performance instant start universal voltage (120-277). See options for Rapid Start, Dimming, or Cold Temp Ballasts, Others available (must specify). Dual level switching available with 2/EB option

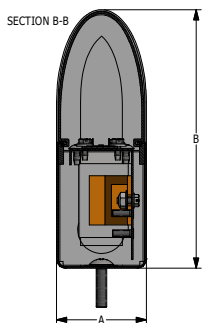
REFLECTOR: Die formed metal with high reflectance white polyester powder coat finish. Typical reflectivity 92%.

INSTALL SURFACE: Not for Outdoor use. Orientation restricted to vertical $\pm 45^\circ$ (typical ceiling mount) required for wet locations only. Suitable for any orientation in damp locations. Four .312" debossed holes for surface mounting. See below for other mounting and supply entry options. Rows: Joiner bands provided for continuous row mounting (See Option: CRM). Please specify number of fixtures in each run.

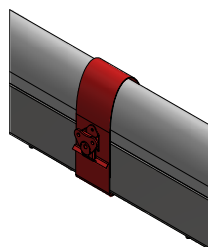
FINISH: Gloss white high reflectance 1000 hr. salt spray polyester powder coat finish standard for all housings. Stainless steel doorframes are satin polished unless option WHT is chosen.

LISTINGS: UL listed per UL_1598 for wet locations. Certified ISO-14644-1 for class 3 through class 9 cleanspaces. Certified Fed Std 209E for Class 1 through Class 100,000 cleanspaces. Electrical components covered under manufacturers warranty, the remaining fixture is covered by a 10 year warranty.

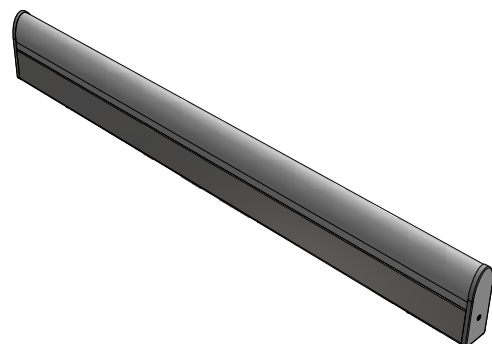
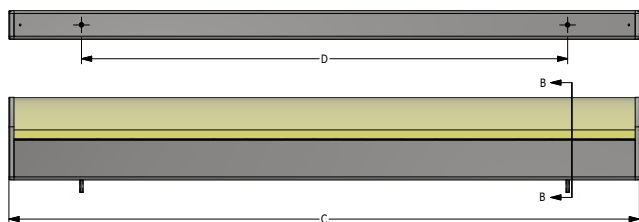
PRODUCT DRAWINGS



CRM JOINER BAND



AFV PROFILE REFERENCE DIMENSIONS (FLUORESCENT ONLY)						
SIZE	DIM A	DIM B	DIM C	DIM D	DIM E	DIM F
40	2.13"	6.13"	49.00"			



Cleanroom KL Tear Drop

Sealed 4' Linear Teardrop Luminaire. Surface Mounting to T-Bar Grid

ENERGY DATA

"TEARDROP" PROFILE FLUORESCENT WRAP					
ENCLOSURE SIZE	LAMP TYPE	LAMP QTY ¹	(EBPRS) RAPID START	(1/EM) 1 LAMP EMERGENCY ²	MAX AMBIENT TEMP ³
40	F32WT8	1	OPTIONAL	700 Lm	40°C (104°F)
40	F28WT5	1	STANDARD	1050 Lm	40°C (104°F)
40	F54WT5HO	1	STANDARD	1150 Lm	40°C (104°F)

¹ LAMPS SUPPLIED BY OTHERS

² TOTAL GENERATED LUMENS (FROM STANDARD EMERGENCY BALLAST SPECIFICATION SHEET)

³ TEMP RATING MAY VARY WITH ALTERNATE SPECIFIED BALLASTS OR ANY NON STANDARD SELECTION