

Behavioral Health Indirect Basket Troffers: BHO-RB-LED-TW

Tunable White 1x4, 2x2, and 2x4 LED Basket Luminaires for Behavioral Health Applications

SPECIFICATIONS

HOUSING: One piece, hole free, robotically seam welded housing has flattened, knockouts for a superior seal. Housings are available in 18Ga. Cold Rolled Steel with White Powdercoat finish.

DOOR FRAME: One piece heavy gauge overlapping door frame is available in either 14Ga Cold rolled steel or 16 Ga 430 Stainless Steel. Mechanically secures to housing using captive flush head torx tamper resistant fasteners, and hinged to housing by use of steel aircraft cables. The frame has a confinement grade construction extending to the edge of housing to prevent access to any crevices or gaps that could be used to establish ligiture.

GASKETS: Closed cell microcellular extruded KleanLock SealPro gasket with vulcanized corners making a one-piece oil and solvent resistant gasket system to block dust and pests from entering the light fixture.

OPTICS: Standard .125" Polycarbonate Lens is provided when no other options are selected. All optics are sealed to the door with NSF listed RTV silicone sealant. Other optics are available, consult factory for more information or options not listed.

LEDS: Commercially available minimum 80 or 90 CRI 2 channel LED modules use 2700K and 6500K chips to mix color in order to achieve a desired color temperature. Modules have rated lifetime of L70 > 50,000 hrs and efficacy of 165Lm/W . LEDs are controllable via 0-10v dimming, see next page for control options. Consult factory for lumen output configurations not listed on spec sheets.

DRIVERS: Standard Universal Voltage Class 2 drivers are 0-10v Dimmable to 1% for most LED configurations. They come with at least 2.5Kv surge protection, have less than 10% THD at max load, Ballast Factor Greater than .95 and are programmable to match specific lumen or wattage requirements. Drivers with higher input voltage ratings are available, consult factory for driver specifications.

REFLECTOR: Specially designed perforated reflector for indirect even fixture illumination.

INSTALL RECESSED: One fixture suitable for Grid and Flanged installation. The Recessed 2x2 & 2x4 versions install by use of four adjustable swing out toggle arms with holes for seismic support wire attachment. The 1x4 version installs by use of factory provided yoke hanger brackets along with mounting hardware. Supply entry via 1/2" trade size flattened knockouts on the back of the housing. Suitable for recessed Non-IC Installation.

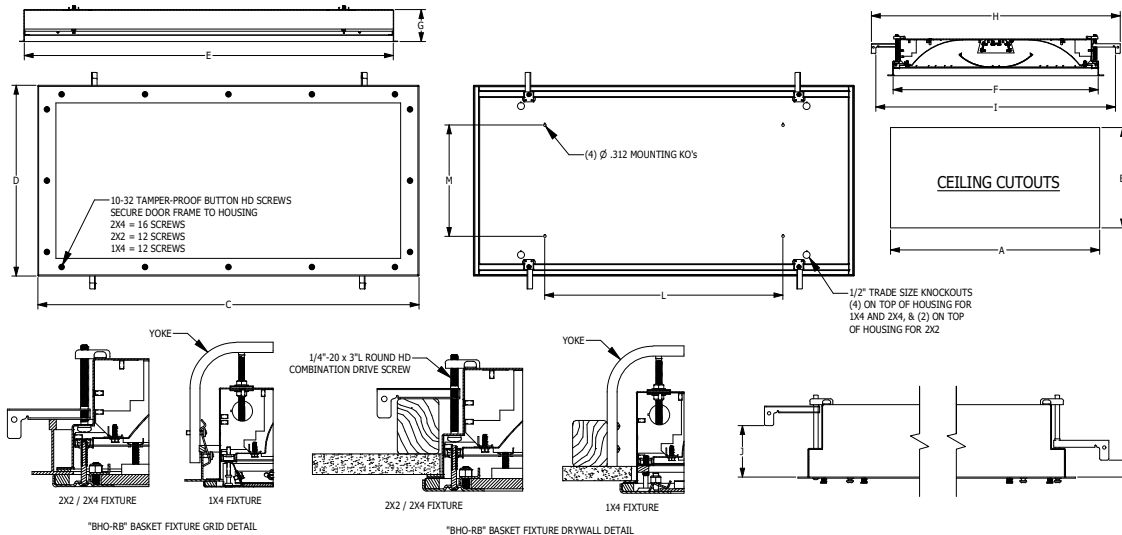
FINISH: Stainless Steel Door frames are Satin polished unless WHT or AMW Options are selected. All other materials are provided with glass high reflectance white polyester powdercoat with 1000hr salt spray test per ASTM B117. AMW option provides a white-microbial polyester powdercoat to all exposed surfaces.

LISTINGS: IP66 rated for dust and water ingress. ETL listed per UL_1598 for wet locations. Chicago Plenum Rated. Drivers and LEDs are covered by a 5 year warranty, the remaining fixture is covered by a 10 year warranty. This product Series is both Build America Buy America (B.A.B.A.) & Buy American Act (B.A.A.) compliant.

PRODUCT DRAWINGS

"BHO-RB" BASKET HOUSING DETAILS

"BHO-RB" REFERENCE DIMENSIONS													
SIZE	DIM A	DIM B	DIM C	DIM D	DIM E	DIM F	DIM G	DIM H	DIM I	DIM J	DIM K	DIM L	DIM M
1X4	47.00"	11.00"	48.00"	12.00"	46.50"	10.50"	4.00"	13.12"	12.25"	N/A	N/A	36.00"	8.62"
2X2	23.00"	23.00"	24.00"	24.00"	22.50"	22.50"	4.00"	27.31"	26.31"	2.81"	0.89"	14.00"	14.00"
2X4	47.00"	23.00"	48.00"	24.00"	46.50"	22.50"	4.00"	27.31"	26.31"	2.81"	0.89"	30.00"	14.00"



03-CB-L-0V BH BASKET TROFFER . DATE: 2/20/2025

Behavioral Health Indirect Basket Troffers: BHO-RB-LED-TW

Tunable White 1x4, 2x2, and 2x4 LED Basket Luminaires for Behavioral Health Applications

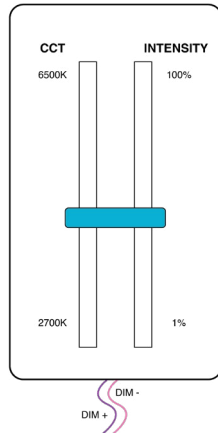
ENERGY DATA

BHO-RB-LED TROFFER (APPROX ¹ LUMENS DELIVERED)						
ENCLOSURE SIZE	LIGHT PACKAGE	Tunable White 80 CRI (4000K)				CCT RANGE
		LUMENS ¹	WATTS ²	EFFICACY	MAX AMB TEMP ³	
1X4	1LEDTW	3,015	35	86	40°C (104°F)	2700k - 6500k
1X4	2LEDTW	6,073	68	89	40°C (104°F)	2700k - 6500k
1X4	EM10	860-890	4	NA	40°C (104°F)	NA
2X2	2LEDTW	2,900	35	83	40°C (104°F)	2700k - 6500k
2X2	3LEDTW	4,400	53	83	40°C (104°F)	2700k - 6500k
2X2	4LEDTW	5,600	68	82	40°C (104°F)	2700k - 6500k
2X2	EM10	820-830	4	NA	40°C (104°F)	NA
2X4	2LEDTW	6,600	68	97	40°C (104°F)	2700k - 6500k
2X4	3LEDTW	10,000	103	97	40°C (104°F)	2700k - 6500k
2X4	4LEDTW	13,100	135	97	40°C (104°F)	2700k - 6500k
2X4	EM10	970	4	NA	40°C (104°F)	NA

- ¹ DELIVERED LUMEN DATA IS CALCULATED BASED ON STATIC WHITE PHOTOMETRY @ 4000K CCT
- ² WATTAGE IS MEASURED @ 120vAC AND Tambient = 25C. WATTAGES MAY VARY WITH ALTERNATE CONFIGURATIONS
- ³ MAX AMBIENT TEMP RATING, NON-IC INSTALLATION. RATING MAY VARY WITH OPTIONS SELECTED
- ⁴ 90 MINUTE 10W EMERGENCY DRIVER; LUMENS CALCULATED BASED ON FIXTURE EFFICACY.

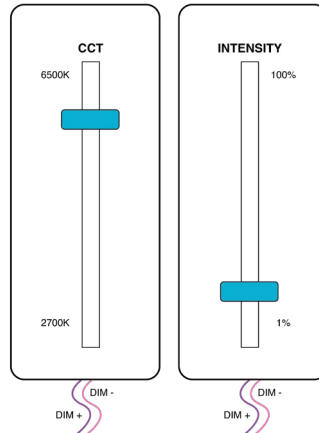
CONTROL OPTIONS

WARM DIM CONTROL



Only one set of dimming Leads are required. As Intensity is increased so is the CCT. As intensity decreases the CCT decreases to warmer color Temperatures.

CONTINUOUS CCT CONTROL



Two set of dimming leads are required. Intensity and CCT of light are controlled independently from one another.