

## INSTALLATION INSTRUCTIONS

### NOTES

- Installation should be completed by an individual familiar with the construction and operation of the luminaire.
- Installation of luminaire must be in accordance with national and local building and electrical codes.
- Carefully read and follow all warnings and instructions before installing or servicing the luminaire.
- Instructions do not cover all details and all possible product configurations.
- Verify product dimensions from specification sheet.
- Do not restrict luminaire ventilation.
- Ensure LED luminaire is not covered with material that will prevent convection or conduction cooling.
- Do not exceed luminaire's maximum ambient temperature.
- Ensure LED luminaire has the correct polarity before installation.

### WARNINGS

#### Electrical shock:

- Disconnect or turn off power before installing or servicing luminaire.
- All electrical wiring to be completed by a qualified licensed electrician in accordance with local and National Electrical Code.
- Ensure supply voltage corresponds with the correct ballast/driver voltage.
- Avoid exposing wiring to metal edges and sharp objects
- Ensure that the luminaire is properly grounded to prevent electric hazards.

#### Fire:

- Keep flammable and combustible materials away from the light source and/or lens.
- Use correctly rated supply conductors as indicated by product labeling.

#### Burn:

- Allow luminaire to cool before handling luminaire.

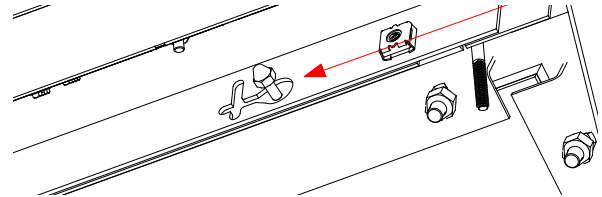
#### Personal Injury:

- Wear safety glasses and gloves when handling the luminaire to avoid physical injury.
- Avoid direct eye contact with light source.
- Always support the weight of the luminaire.

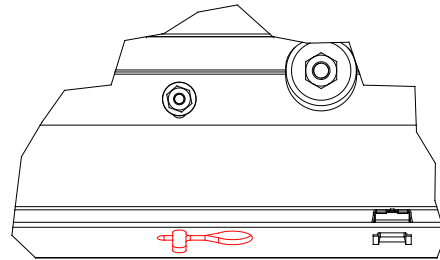
*Manufacturers is not responsible for any injuries due to the improper installation or handing of its products.*

### INSTALLATION STEPS

1. Ensure the mounting surface is suitable for supporting more than the weight of the luminaire.
2. Remove luminaire from box and inspect for damage.
3. Using an appropriate tamper-proof tool, remove the screws around the perimeter of enclosure.
4. Remove door from backplate by sliding the hinge studs towards the drop slot.



5. Remove LED plate to access power supply, knockouts, and mounting holes.
6. Mount the base plate to the surface. When wall mounting, the orientation of the drop slot hinges should have the clearance hole facing up.



7. Remove the unwired side of the luminaire disconnect from the power supply and make the appropriate supply connections while maintaining polarity.  
NOTE: Supply connection splices should be made in the junction box and not in the luminaire.
8. Connect the luminaire green ground wire to a suitable ground supply wire.
9. Connect the luminaire disconnect back together and install the LED plate.
10. Hang the door on to the base plate by using the hinge slots and close luminaire.
11. Begin aligning and securing the perimeter fasteners of the enclosure ensuring that all the screws are installed until completely torquing the screws down.
12. Energize the luminaire and inspect for any defects or failures.

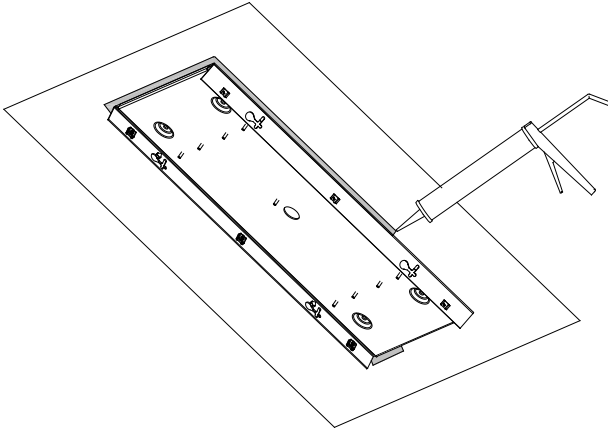
**KURTZON™**

1420 S. Talman Avenue Chicago, IL 60608

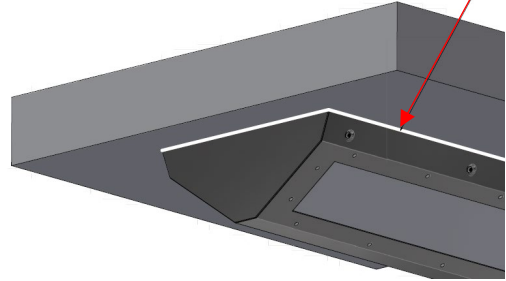
Website: [www.kurtzon.com](http://www.kurtzon.com)

Phone: 773.277.2121

**NOTE:** For Wet Location rated fixtures, check gasket for proper seal between backplate and mounting surface. To insure the fixtures watertight integrity, especially if the fixture is mounted in direct exposure to the elements, caulk between the mounting surface and base using a high quality caulking material.



Once the body of the luminaire is closed and securely fastened, wipe away any **excess sealant** that is visible on the outside of the luminaire.



#### CAUTION

Care should be exercised when these fixtures will not be installed immediately upon delivery, and if they will not be put into service immediately after installation. Proper fixture performance and a "like new" appearance can only be assured if precautions are taken after fixtures arrive. If fixtures will be on site but uninstalled for any length of time please follow these precautions to prevent damage to the fixtures:

Fixtures should be left palletized in the cardboard gaylord, in an indoor area. If gaylord is opened, fixtures should be indoors to protect from dirt and moisture. Care should be taken to protect edges of fixture from damage, because the damage to any painted surface will cause rust. Fixtures that are installed, but in an unoccupied area, can also be subject to dirt and moisture. Be aware that conduit runs can direct water inside a fixture through the junction box.

Depending on the location, weather in certain localities and certain times of the year can be especially damp. Fixtures in uncontrolled areas that are not in use will likely become covered with condensation. Even wet location rated products are not airtight and moist air will get inside the fixture. This situation is most severe since the heat of the fixture cannot be used to dry out the fixture. This situation is not recommended and eventually rust may begin to form on steel products. It is recommended that in these situations, the fixture housing be wrapped in a vented plastic bag and closed up against the wall or ceiling. This will provide short term (weeks) protection for CRS products. Longer exposure (month or longer) to these conditions may require a stainless steel housing and hardware.