

KL-R/EZ or FP-R/EZ Fixture Installation Instructions for T-Bar Ceilings

Important Safeguards

When Installing Electrical Equipment, Basic Safety Precautions Must Always be followed, including the following:

Do Not Use This Product For Other Than Intended Use.

Caution: Installation Must Be Performed By Qualified Service Personnel.

Installation shall be done in accordance with the wiring methods given in the NEC, NFPA 70 Art. 410, 500 & 501-4(b). (as applicable)

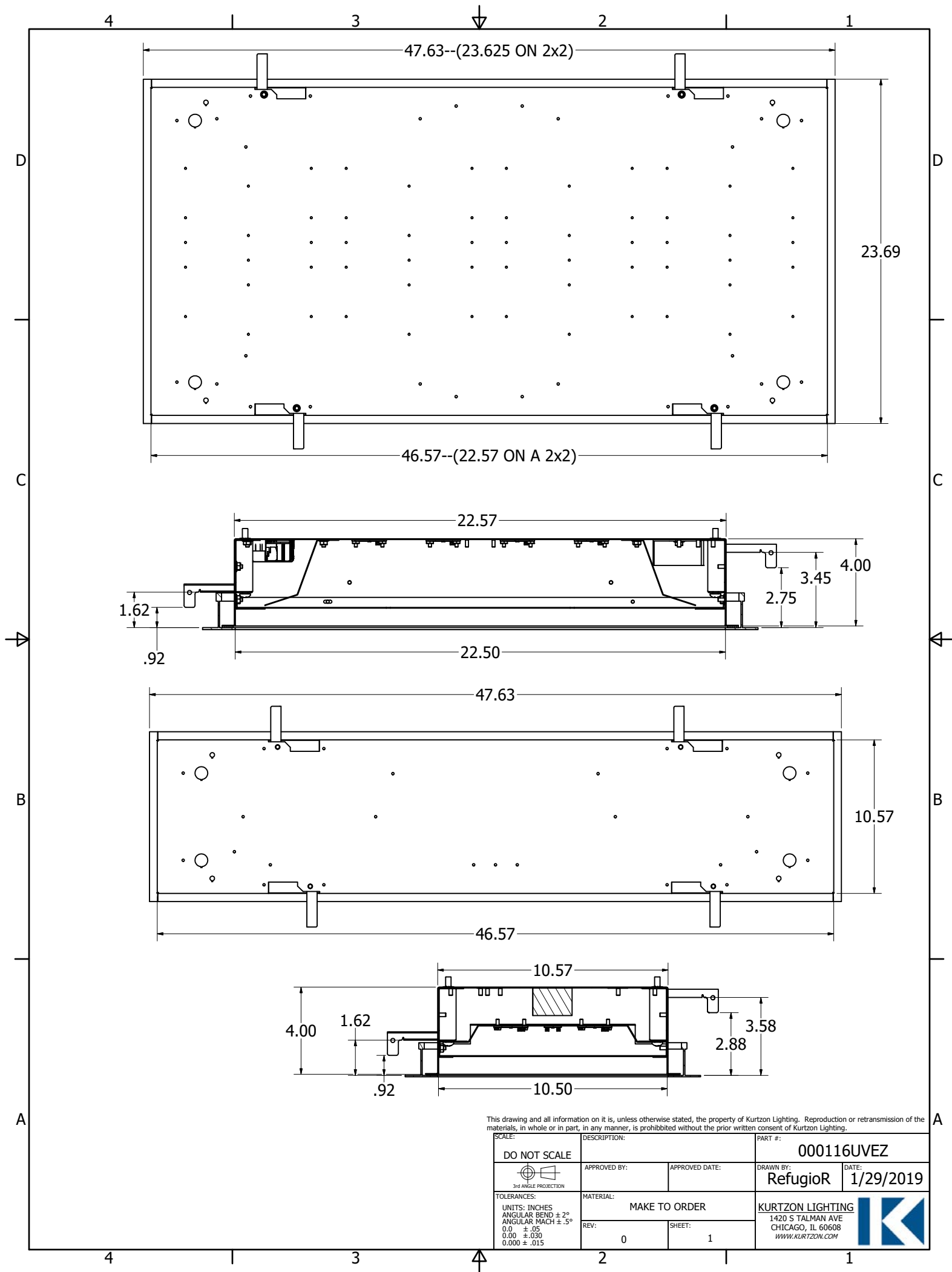
Use of Accessory Equipment Not Recommended by the Manufacturer May Cause an Unsafe Condition.

Read and Follow All Instructional and Cautionary Labels Found On or In This Fixture.

Read and Follow All Safety Instructions

- 1) With fixture body resting face up on a stable surface, open doorframe using the provided removal tool
 - a) Opening the fixture: Center the Suction cup tool on the frame near one of the corners and press the cups tightly to the frame. Pull evenly on the tool using a single quick motion.
 - b) If suction cups detach prematurely, make sure that the cups and the door frame surface are clean. If necessary try to wet the cups with a little bit of water. Repeat this process until all 4 corners of the door have been pulled away from the housing.
 - c) To release the door, Squeeze the torsion springs and slip them through the slot.
- 2) Set aside door frame then locate and remove internal reflector(s).
- 3) Locate one of the provided knockouts on the rear of the housing. Knockouts are pressed back in place and may be difficult to locate. Create the Supply entrance hole in the housing by removing the selected knockout using a screwdriver
- 4) Remove all debris from the inside of the fixture.
- 5) Prepare a mounting means capable of reliably supporting more than the weight of the fixture according to applicable building codes. **Fixture is compatible with MOST standard 1" or 1.5" T-bar Grid ceilings. Verify fit with dimensions on product specification sheet prior to ordering.**
- 6) R/EZ fixtures are provided with loose PSA backed gasket. If your grid system does not come with a gasket installed already, this gasket can be installed on the face of the grid on the plenum side of the T-bar. Apply silicone in the corners where the gasket meets to ensure there are no air leaks.
- 7) Insert fixture housing through ceiling opening and lay fixture centered on T-Bar. Be sure the flange gasket is continuously contacting the T-Bar or gasket.
- 8) Adjust toggle mounting bracket on housing to meet up with T-bar.
- 9) Use holes in toggle bracket to attach seismic support cables according to local building codes if required. Note: this and all other hardware should be plated or stainless steel if installed in a wet or damp location.
- 10) Rough in supply conduit and connections according to the NEC and local requirements using minimum 90C supply wiring materials.
- 11) Remove any protective films from the reflective or outer surfaces as provided.
- 12) Replace reflector and secure by tightening screws or nuts.
- 13) Install only the rated lamps as marked on fixture.
- 14) Secure doorframe to housing by inserting all the torsion springs into the slots on the housing, keeping the door extended from the body.

[The torsion springs are designed to stop at the extended position and requires force to begin closing. Be careful: The doorframe will close quickly and may cause injury if your hand or finger are between the door and housing when the door is pushed closed.]
- 15) Center the door over the housing and evenly push the doorframe up. As the frame nears the grid it will quickly complete the closure and center itself on the housing. Inspect that it has done so. If the door is not sealed or is not contacting the T-bar, use the tool to open and re-close the doorframe.
- 16) Energize fixture with rated voltage from a protected branch circuit.
- 17) Do Not Open or Service Fixture While Energized. Always Disconnect Power from supply before servicing.
- 18) Do Not Operate Fixture when damaged or not completely sealed.
- 19) Cleaning can be performed using ordinary detergent based cleaning agents and cloth or paper towels. All cleaning should be done while the luminaire is de-energized.



This drawing and all information on it is, unless otherwise stated, the property of Kurtzon Lighting. Reproduction or retransmission of the materials, in whole or in part, in any manner, is prohibited without the prior written consent of Kurtzon Lighting.

SCALE: DO NOT SCALE	DESCRIPTION:	PART #: 000116UVEZ
APPROVED BY:	APPROVED DATE:	DRAWN BY: RefugioR
DATE: 1/29/2019	TOLERANCES: UNITS: INCHES ANGULAR BEND $\pm 2^\circ$ ANGULAR MACH $\pm .5^\circ$ 0.0 $\pm .05$ 0.00 $\pm .030$ 0.000 $\pm .015$	
MATERIAL: MAKE TO ORDER	REV: 0	SHEET: 1
KURTZON LIGHTING 1420 S TALMAN AVE CHICAGO, IL 60608 WWW.KURTZON.COM		

