

IS-HSP & HSH Indirect Systems

Warning: Installation is to be performed by Qualified Personnel only.

1. Un-crate several fixtures and the hardware provided. Familiarize yourself with the fixture and look for the orientation marking. This marking indicates the aiming direction of the asymmetric fixture.
2. Orient the first fixture so that the aim matches the layout drawings. (The lamps are typically located on the side away from the water.)
3. Begin with the first fixture arranged so that the female end will connect with the remaining fixtures and the male end connects with the endplate or corner section. The first fixture requires two (2) supports (stems or rods) *Please note the couplers welded to the fixture body. One is regressed (female) and the other protrudes (male). The female end is always supported directly by the rod (RCH-3) or stem (SCH-3) assemblies.*
4. Install the J-box(s) and additional supporting hardware for stems or rods. See below.

For A Stem SCH-3 (See fig. 1)

- a) Prepare a J-box at the proper location, centered directly over the fixture mounting point. This is located three (3) inches in from the end of the fixture and along the major centerline.
- b) With stem in hand, insert collar, canopy and crossbar over end of stem.
- c) Thread on swivel-nut (with rounded face nearest crossbar) and jam-nut and securely tighten one against the other using tools.
- d) Thread on jam-nut to other end of stem running it up the threads several inches.
- e) Feed 12 ga. Supply and ground wiring through stem leaving enough wire extending from each end for later use.
- f) *Note: Wiring must be chosen that meets the requirements of the environment and the fixture.*
- g) Attach stem assembly to J-box using screws (this and all hardware must be corrosion protected.) *Note: This support is only secondary and is not intended to support the weight of the fixture. Primary support of the fixture is provided by the crossbar holes that extend beyond the J-box. The primary support system is discussed below.*
- h) Using the .375" diameter holes found at the ends of the crossbar, thread the primary support bolts or other hardware through crossbar to building structure. Secure the crossbar in appropriate locations using suitable stainless steel hardware that is securely attached to building structural members. *(Others provide the method of attachment for this hardware and the hardware itself. Be sure that the methods and materials used are capable of supporting more than the entire fixture weight with an appropriate safety factor, keeping corrosion issues in mind. See Fig. #1.). Consult local building codes and the NEC for additional requirements.*

-OR-

For A Rod RCH-3 (See fig. 2.)

- a.) Prepare a mounting point at the proper location, centered directly over the fixture mounting point. This is located three (3) inches in from the end of the fixture and along the major centerline. (Consult drawings as needed)
- b.) Insert collar, canopy, crossbar and (1) washer over end of rod.
- c.) Thread on two (2) 1/4-20 nuts and securely tighten one against the other using tools.
- d.) Thread onto the other end of rod, one (1) 1/4-20 nut, running it up the threads several inches.
- e.) Using the .375" diameter holes found at the ends of the crossbar, thread the primary support bolts or other hardware through crossbar to building structure. Secure the crossbar in appropriate locations using suitable stainless steel hardware that is securely attached to building structural members. *(Others provide the method of attachment for this hardware and the hardware itself. Be sure that the methods and materials used are capable of supporting more than the entire fixture weight with an appropriate safety factor, keeping corrosion issues in mind. See Fig. #2.) . Consult local building codes and the NEC for additional requirements.*

For first fixture in a row using rods or stems:.. (See fig. #5)

6. Remove electrical tray from housing by removing the four screws.
7. Remove Lens Bracket from housing by removing the two screws.
8. Orient fixture housing so that the female end is positioned so that it will mate with the next housing.
9. Secure the female endcap to the male end of fixture.
10. Raise fixture to align it with rods and/or stems, being sure it is properly oriented.
11. With the stems and/or rods passing through the housing support bracket, thread on the remaining hardware consisting of a washer and two (2) nuts. (See fig. 2)
12. Do the same for the other end by repeating steps 10 & 11 above.
13. Level the fixture at the appropriate mounting height by adjusting the hardware.
14. Securely tighten one support hardware nut against the other, locking it in place. Do the same for the other end.

For second and all remaining fixtures in a row using rods or stems. (See fig. 3)

15. Install as above a third stem or rod support at a distance equal to the nominal length of the fixture away from the nearest other support. (i.e.: 96 inches for an IS-HSH-3-80) See drawings for details.
16. Raise fixture to align it with rods and/or stems and the previously installed fixture.

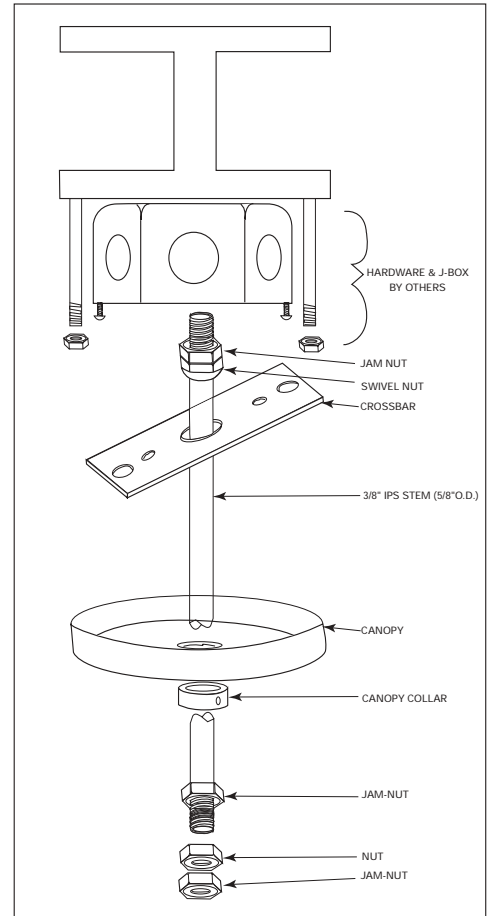


Figure 1 SCH-3

For first fixture in a row using rods or stems: (continued)

17. With the stem or rod passing through the housing support bracket nearest the female end, thread on the remaining hardware. (See fig. #1 & 2)
18. Adjust the stem or rod hardware to the approximate finished level of the fixture.
19. Align the male end with the previously installed fixture and insert one of the 1/4-20 bolts into the bulkhead flange starting with the bottom/center of the fixture.
20. Continue bolting the flange together at every hole starting at the top/outer sides. Tighten these bolts till the flanges touch and the nuts are tight.
21. Check and adjust level of the fixture at the appropriate mounting height by adjusting the stem or rod hardware.
22. Securely tighten one support hardware nut against the other, locking it in place.
23. Reinstall the electrical tray as before.
24. Complete the wiring of the fixture and stem while keeping all wiring away from the ballast and reflector.
25. Insert the glass panel under the lens bracket and reinstall the lens bracket.
26. Install the rated lamp as marked on the fixture.
27. Push the collar and canopy up against the ceiling, covering the J-box and mounting hardware and tighten the setscrew.

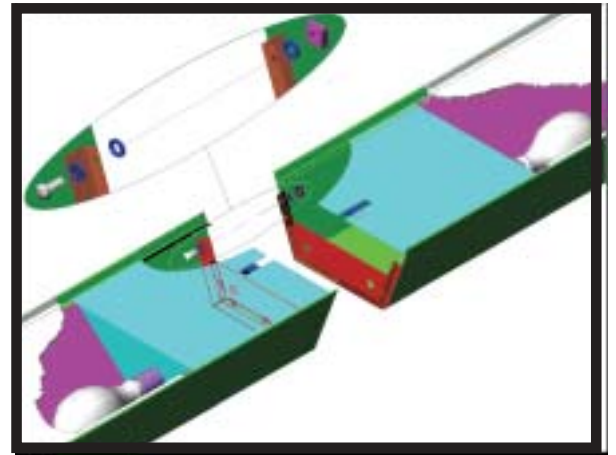


Figure 3
ROW ASSEMBLY

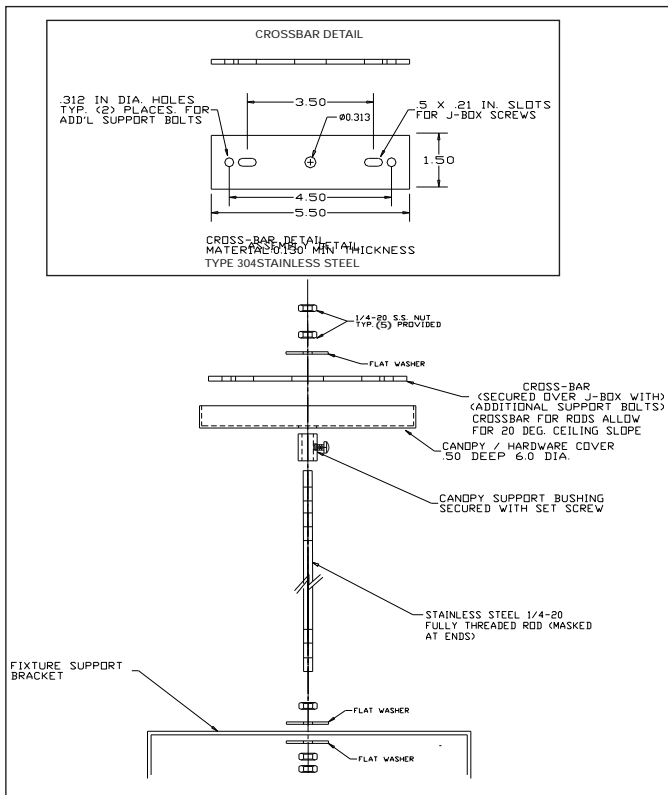


Figure 2 RCH-3

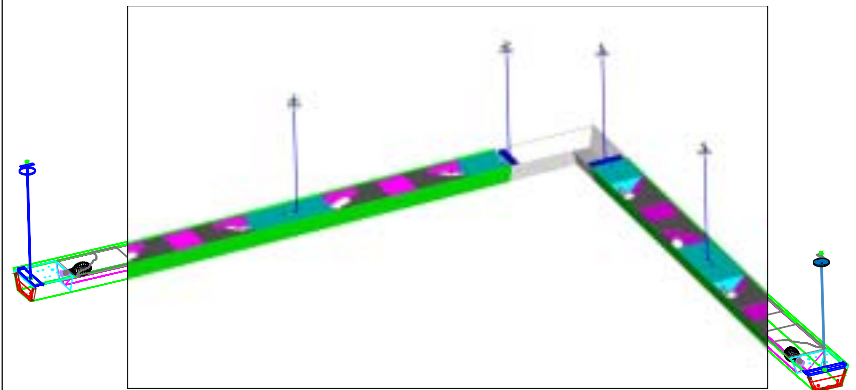


Figure #4
CORNER ASSEMBLY

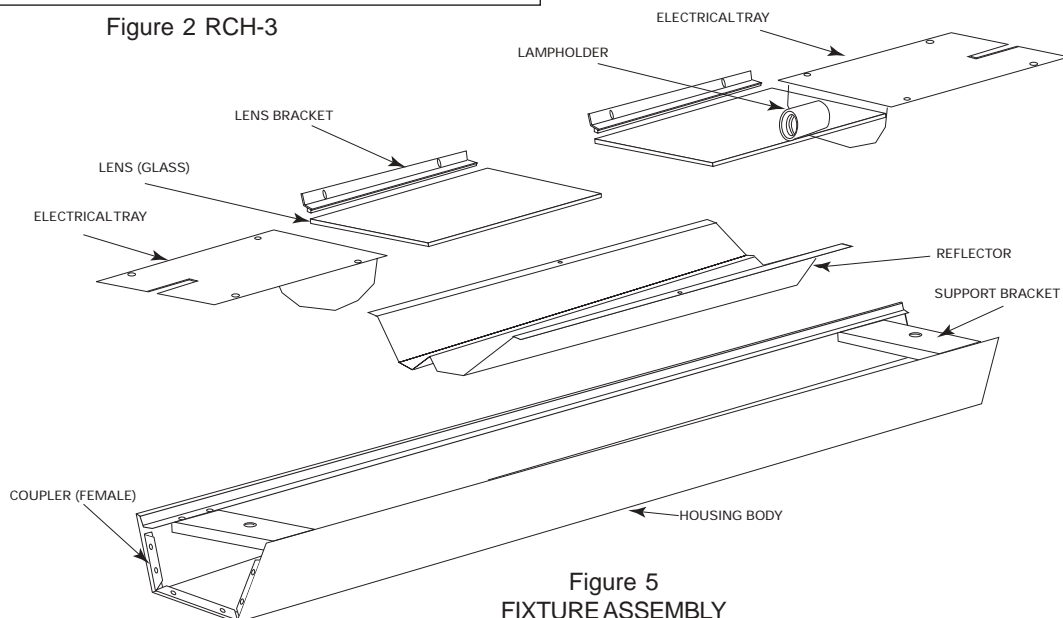


Figure 5
FIXTURE ASSEMBLY